



**Influenza-like-illness (ILI) and Severe Acute Respiratory Infection (SARI) surveillance, Week 23 (1–7<sup>th</sup> June, 2014)**

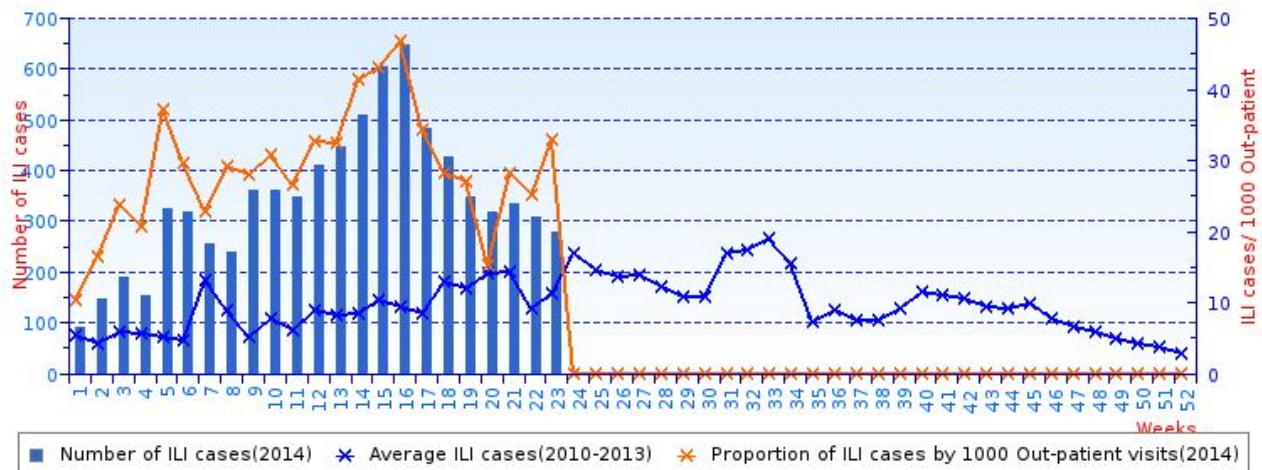
**Synopsis**

The incidence of ILI and SARI for the week was 33/1000 outpatient visits and 7/100 hospitalized patients respectively. The highest incidence of ILI cases were reported from Phuntsholing Hospital and SARI from Gelephu and Tsirang Hospital. The ILI cases were commonly observed among age group 5-14 year while 0-1 year age groups were observed among SARI cases. From **15** samples received and tested by Real-Time RT-PCR, positivity rate was **6.67%**. **Flu A/(H1)pdm09** was found only circulating strain for the week.

**1. Influenza Like-Illness (ILI) surveillance**

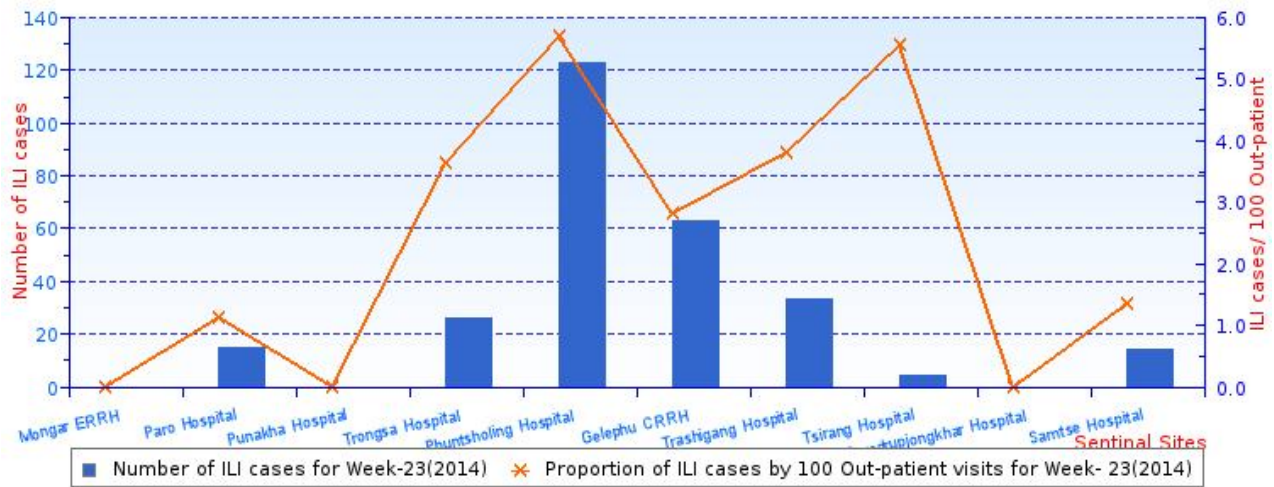
Average ILI incidence in the sentinel sites for the week was 33 cases per 1000 outpatient visits which is little lower than the previous week (Figure 1). The highest ILI incidence for the week among sentinel sites was observed in Phuntsholing Hospital (123 cases) followed by Gelephu Hospital (63 cases) respectively (Figure 2). Mongar, Punakha and Samdrup Jongkhar have not reported for the week.

Number of influenza-like illness(ILI) cases and proportion of ILI cases by 1000 Out-patient visits



**Figure 1:** Average number of ILI cases reported for 23<sup>rd</sup> week and previous weeks. (Data source: Online weekly reporting from sentinel sites).

Number of ILI cases & proportion of ILI cases by 100 Out-patient visits for Week-23(2014)

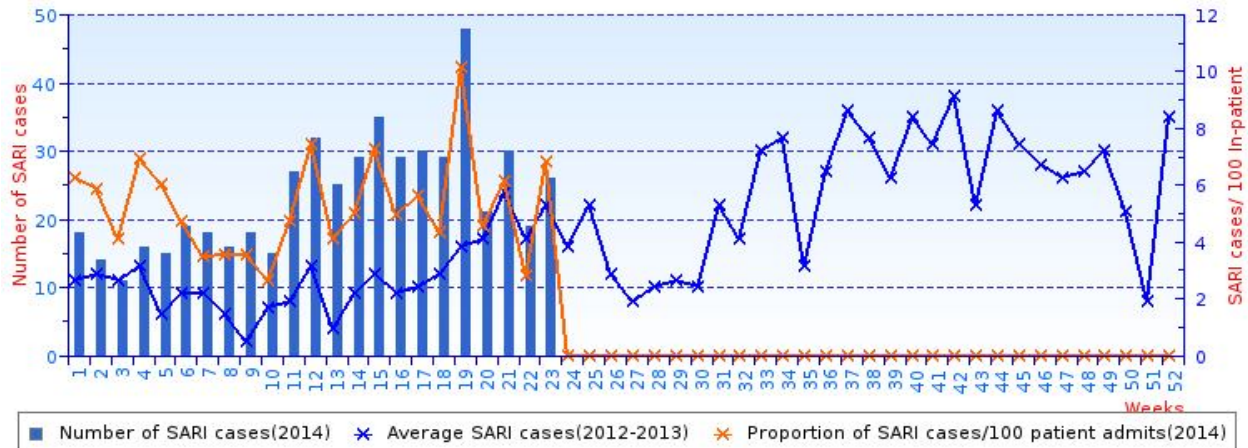


**Figure 2:** The number of ILI cases reported by sites (Data source: **Online** weekly reporting from sentinel sites).

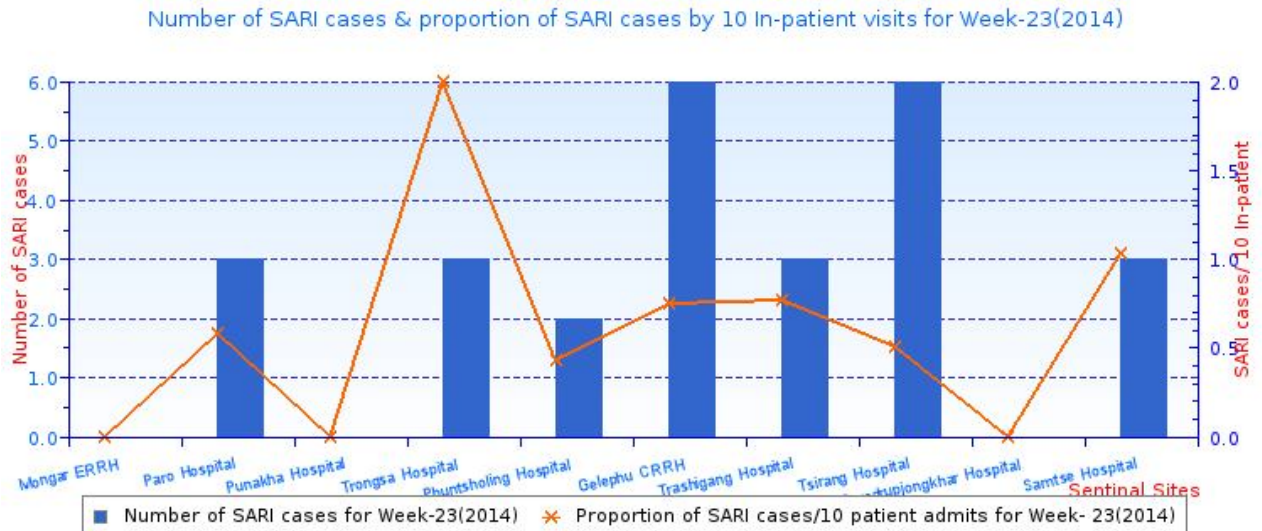
## 2. Severe Acute Respiratory Infections (SARI) surveillance

Average SARI incidence in the sentinel sites for the week was 7 SARI cases per 100 hospitalized patients which is little higher than the previous week (Figure 3). The highest SARI incidence for the week among sentinel sites was observed in Gelephu and Tsirang Hospital (6 SARI cases). Mongar, Punakha and Samdrup Jongkhar have not reported for the week (Figure 4).

Number of severe acute respiratory infection(SARI) cases



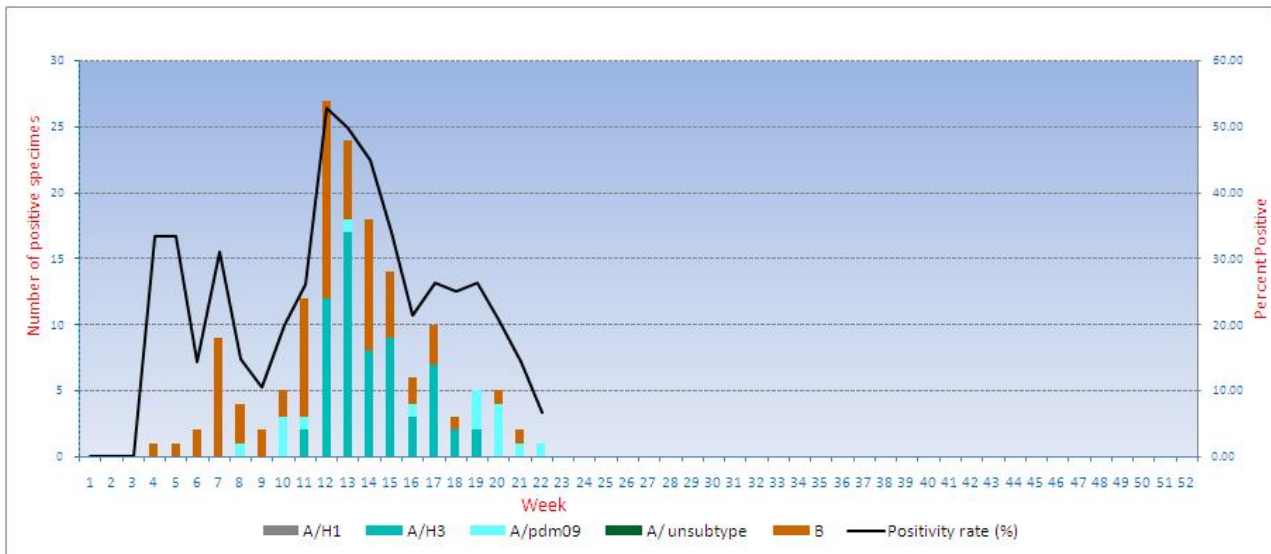
**Figure 3:** Average number of SARI cases reported for 23<sup>rd</sup> week and previous weeks. (Data source: **Online** weekly reporting from sentinel sites).



**Figure 4:** The number of SARI cases reported by sites (Data source: **Online** weekly report from sentinel sites).

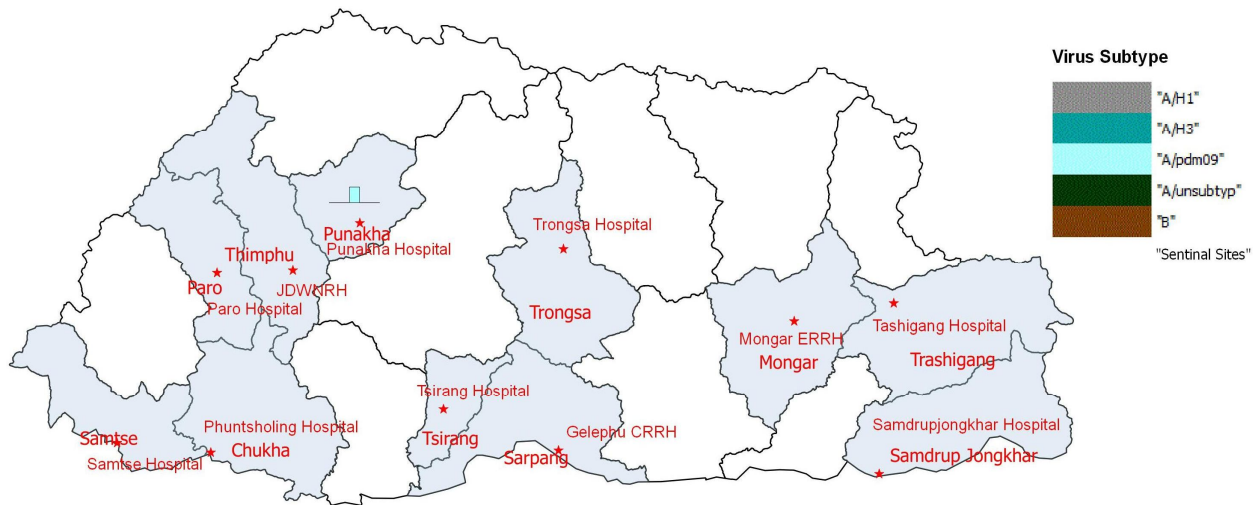
### 3. Virological Surveillance

Of total 15 samples tested by RT-PCR, 1/15 (**6.67%**) were positive for Influenza viruses (A/Pdm09- 1) however few sites have not collected samples. No SARI sample was received (Figure 5 & Table 1).



**Figure 5:** Trend of influenza virus subtype by week

(Note: Virological surveillance data is for week 22)



**Figure 6:** Influenza subtype virus by sentinel sites.

**Table 1:** ILI/SARI samples received from sentinel sites for the week 21 of 2014.

| Sl. No   | Surveillance sites    | No. of samples received | Influenza virus type and subtype |      |         |              |   |
|--|-----------------------|-------------------------|----------------------------------|------|---------|--------------|---|
|  |                       |                         | A/H1                             | A/H3 | A/pdm09 | A/unsubtyped | B |
| 1  | Mongar RR Hospital    | 0                       |                                  |      |         |              |   |
| 2  | JDWNRH, Thimphu       | 0                       |                                  |      |         |              |   |
| 3  | Paro Hospital         | 2                       |                                  |      |         |              |   |
| 4  | Punakha Hospital      | 2                       |                                  |      | 1       |              |   |
| 5  | Trongsa Hospital      | 1                       |                                  |      |         |              |   |
| 6  | Phuntsholing Hospital | 7                       |                                  |      |         |              |   |
| 7  | Gelephu RR Hospital   | 0                       |                                  |      |         |              |   |
| 8  | Trashigang Hospital   | 0                       |                                  |      |         |              |   |
| 9  | Tsirang Hospital      | 0                       |                                  |      |         |              |   |
| 10   | S/Jongkhar Hospital   | 0                       |                                  |      |         |              |   |
| 11   | Samtse hospital       | 3                       |                                  |      |         |              |   |
|  | <b>Total</b>          | 15                      |                                  |      | 1       |              |   |
| <b>Note: Weekly sample target for the surveillance is minimum 50 samples ( i.e. 4-5 samples per site weekly)</b> |                       |                         |                                  |      |         |              |   |

#### 4. Age Distribution among ILI and SARI cases

ILI and SARI cases was commonly observed in age group 5-14 and 0-1 years of age respectively (Table 2)

**Table 2:** ILI and SARI age categorization

| Age (Years) | ILI    |                | SARI   |                |
|-------------|--------|----------------|--------|----------------|
|             | Number | Proportion (%) | Number | Proportion (%) |
| 0-1         | 62     | 22.30          | 10     | 38.46          |
| 2-4         | 51     | 18.35          | 5      | 19.23          |
| 5-14        | 67     | 24.10          | 2      | 7.69           |
| 15-29       | 41     | 14.75          | 1      | 3.85           |
| 30-64       | 51     | 18.35          | 3      | 11.54          |
| 65+         | 6      | 2.16           | 5      | 19.23          |

#### 5. Influenza Outbreak

No flu outbreak was reported during the week.

#### 6. Death due to SARI/Pneumonia

No death case was reported due to SARI/pneumonia during the week.