

Influenza-like-illness (ILI) and Severe Acute Respiratory Infection (SARI) surveillance, Week 47 (21st - 27th November, 2016)

Synopsis

The most predominant virus type found in the sentinel sites in the week 47 was *Influenza B*. Overall incidence of Influenza-like-illness (ILI) and Severe Acute Respiratory Infection (SARI) were 24/ 1000 outpatient visits and 6/ 100 hospitalized patients respectively and the highest cases of ILI was reported at Samdrup Jongkhar hospital while SARI were at Paro hospital.

1. Virological Surveillance

Out of eleven respiratory specimens (ILI=7 & SARI=4) received and tested for influenza viruses by Real Time RT PCR, the most common and only detected was *Influenza B* (5) and no Influenza A strain was detected (Figure 1&2). Geographically; these subtypes were reported from West and Central regions (Figure 3).

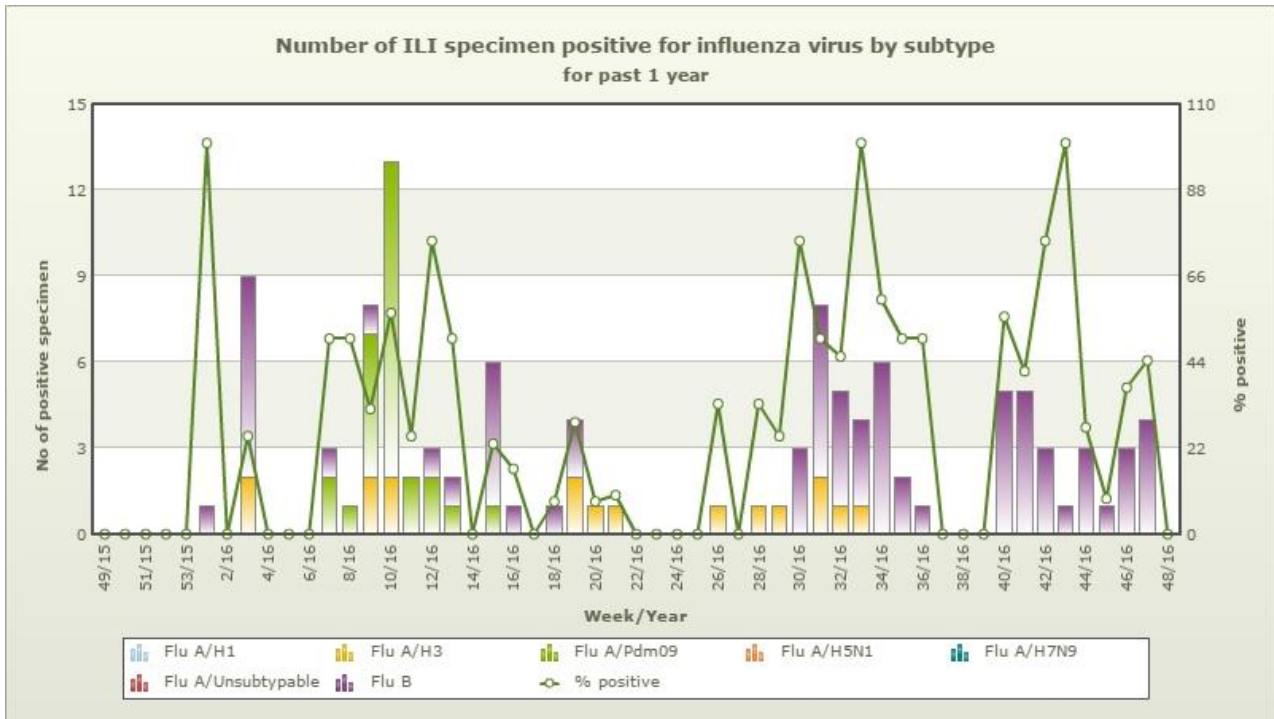


Figure 1: Trend of influenza virus subtypes by week detected from ILI cases (Note: data is till 47th week)

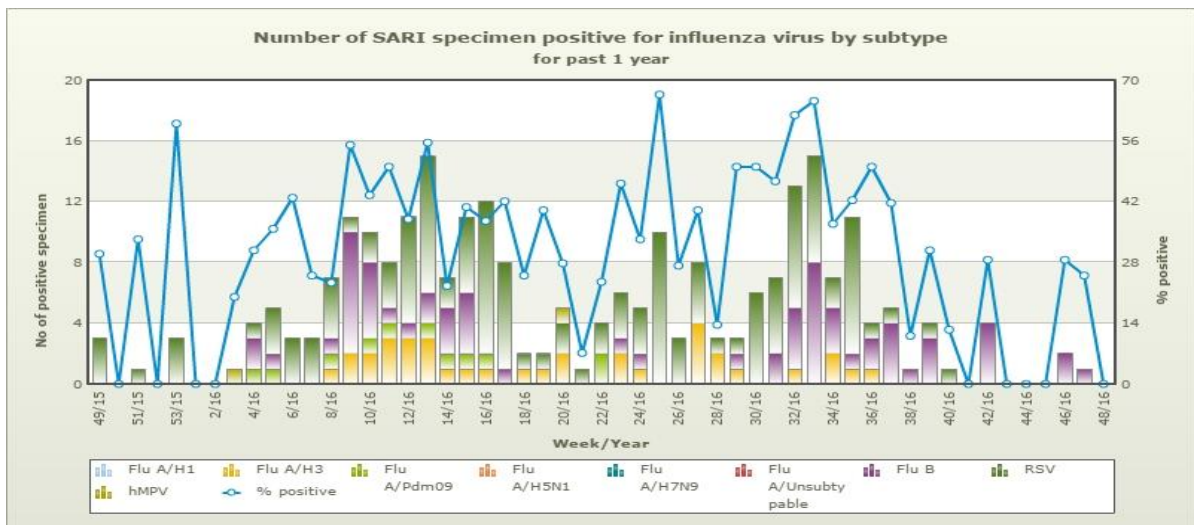


Figure 2: Trend of influenza virus subtypes by week detected from SARI cases (Note: data is till 47th week)

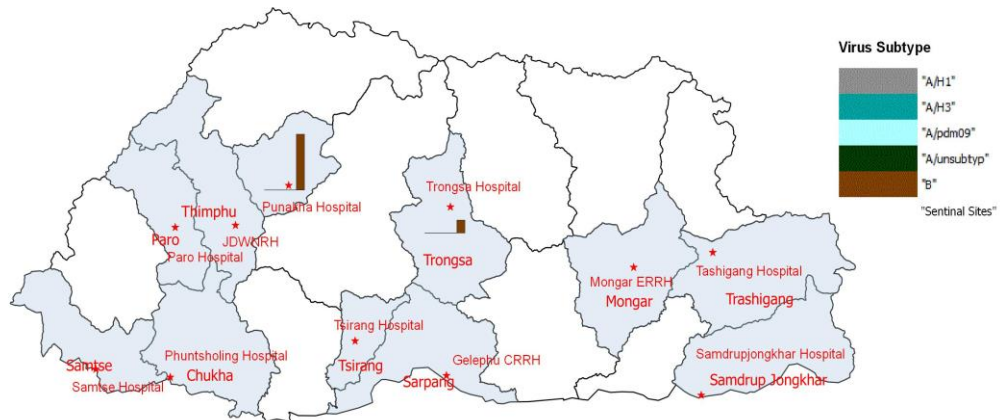


Figure 3: Geographical distribution of influenza virus subtypes detected from ILI and SARI cases for week 47

2. Epidemiological Surveillance

a) ILI and SARI sentinel Surveillance

ILI incidence in the sentinel sites for the week was 24 cases per 1000 outpatient visits, which has increased significantly compared to the previous week (Figure 4). Samdrup Jongkhar hospital has reported the highest ILI cases (35 cases) for the week. Trashigang and Paro hospitals have not reported for the week (Table 1).

SARI incidence in the sentinel sites for the week was 6 cases per 100 admitted cases, which has decreased compared to the previous week (Figure 4). Paro hospital has reported the highest SARI cases (6) for the week. Trashigang and Samtse hospitals have not reported for this week (Table 1).

Note: (Data is preliminary and may change as more reports are received)

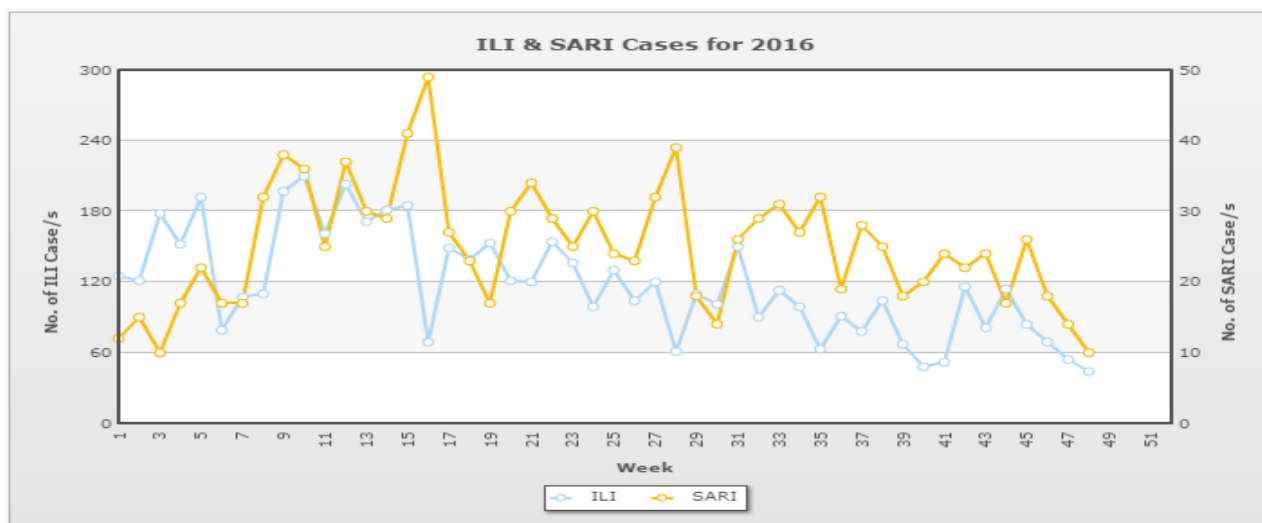


Figure 4: Average number of ILI and SARI cases reported until week 47 (Data source: Online weekly reporting from sentinel sites).

Table 1: Number of ILI/ SARI cases reported by sites

Number of ILI/SARI cases reported and sample collected by sites for Week:47,2016				
Surveillance sites	ILI Cases	No. of Samples Collected	SARI Cases	No. of Samples Collected
Eastern Regional Referral Hospital, Monggar	NA	0	0	0
Jigme Dorji Wangchuk National Referral Hospital	NA	0	2	2
Paro Hospital	NR	0	6	0
Punakha Hospital	4	3	1	1
Trongsa Hospital	4	4	1	1
Phuentsholing Hospital	NA	2	0	0
Central Regional Referral Hospital, Gelephu	NA	0	2	0
Trashigang Hospital	NR	0	NR	0
Damphu Hospital	9	0	0	0
Samdrup Jongkhar Hospital	35	0	2	0
Samtse Hospital	0	0	NR	0

Note: NR, Not Reported and NA, Not Applicable

b) Age distribution

ILI cases were commonly observed in age group 15-29 years followed by 5-14 and 2-4 years, while SARI laboratory cases were commonly seen in 2-4 year.

Table 2: Age categorization of influenza cases

Age categorization of influenza cases reported and laboratory confirmed for Week: 47,2016				
Age(Years)	Reported Cases		Laboratory Confirmed Cases	
	ILI Cases (%)	SARI Cases (%)	ILI Cases(N=4)	SARI Cases(N=1)
0-1Y	1.85	21.43	0	0
2-4Y	16.67	35.71	0	0
5-14Y	16.67	7.14	1	1
15-29Y	44.44	14.29	2	0
30-65Y	18.52	14.29	1	0
65+Y	1.85	7.14	0	0

3. Influenza outbreak & investigated

No outbreak was reported in this week.

4. Death due to SARI/ Pneumonia

No death reported

Note: Following Clinicians, Laboratory staff and other Hospital staffs are currently involved in ILI surveillance in their respective sites as listed below;

Sl. No.	Sentinel site	Name of Participants	Designation	Roles & Responsibility	Contact No.
1	Samtse	Dr Rigden	GDMO	Enroll ILI subject	17976143
2		Dil Maya	Sr Lab Technician	Sample collection	17697307
3		Ngawang Chogyal	OT Technician	Report the case	17687826
4	Phuntsholing	Nidup Tshomo	Staff Nurse	Enroll SARI subject	17507491
5		Som Kumar Namchu	Sr. Lab Technician	Sample collection	77743637
6		Dr. Thinly Pelzang	Medical superintendent	Enroll ILI subject	77459555
7	Punakha	Dr. Choni Wangmo	CMO	Enroll ILI subject	17939580
8		Sherub Thinley	Lab Technician	Sample collection	17654950
9		Dorji Tshering	ENT Technician	Report the case	17966702
10	Tsirang	Dr Tej Nath Nepal	Sr. Medical Officer	Enroll ILI subject	17618007
11		Yeshe Lhendup	Sr. Lab Technician	Sample collection	17643320
12		Tashi Tshering	MedicalRecord assistant	Report the case	17648169
13	Paro	Dr. Ugyen Wangdi	CMO	Enroll ILI subject	17701525
14		Karma Dorji	Sr. Lab Technician	Sample collection	17676359
15		Namgay Lham	Staff Nurse-I	Report the case	17741371
16	Mongar	Dr. Sangay	Medical Officer	Enroll ILI subject	17751637
17		Damcho	Sr Lab Technician	Sample collection	17708074
18		Gopal Sanyasi	Lab Technician	Sample collection	17373448
19	Trashigang	Dr. Palden Dorji	CMO	Enroll ILI subject	17827843
20		Nidup Zangmo	Lab Technician	Sample collection	17648033
21		Pema Zangpo	Ortho Technician	Report the case	17784843
22	Gelephu	Jigme Dukpa	Clinical Officer	Enroll ILI subject	17660030
23		Vishal Chetri	Lab Technologist	Sample collection	17422825
24	Trongsa	Bal Bdr Mongar	Lab Technician	Sample collection	17871974
26		Dr. Suresh Mothey	CMO	Enroll ILI subject	17946181
27		Tashi Norbu	Staff Nurse-III	Enroll ILI subject	17714987
28		Mon Bdr Pakhring	Lab Technician	Sample collection	17635595
29		Sangay Dorji	Staff Nurse	Report the case	17873597
30		Dr. Ugyen Wangdi	Medical Officer	Enroll ILI subject	1773-3500
31	S/Jongkhar	Karma Choden	Lab Technician	Sample collection	17376632
32		Nasema Rehima	Pharmacist Technician	Report the case	17656685

Note: (Data is preliminary and may change as more reports are received)

