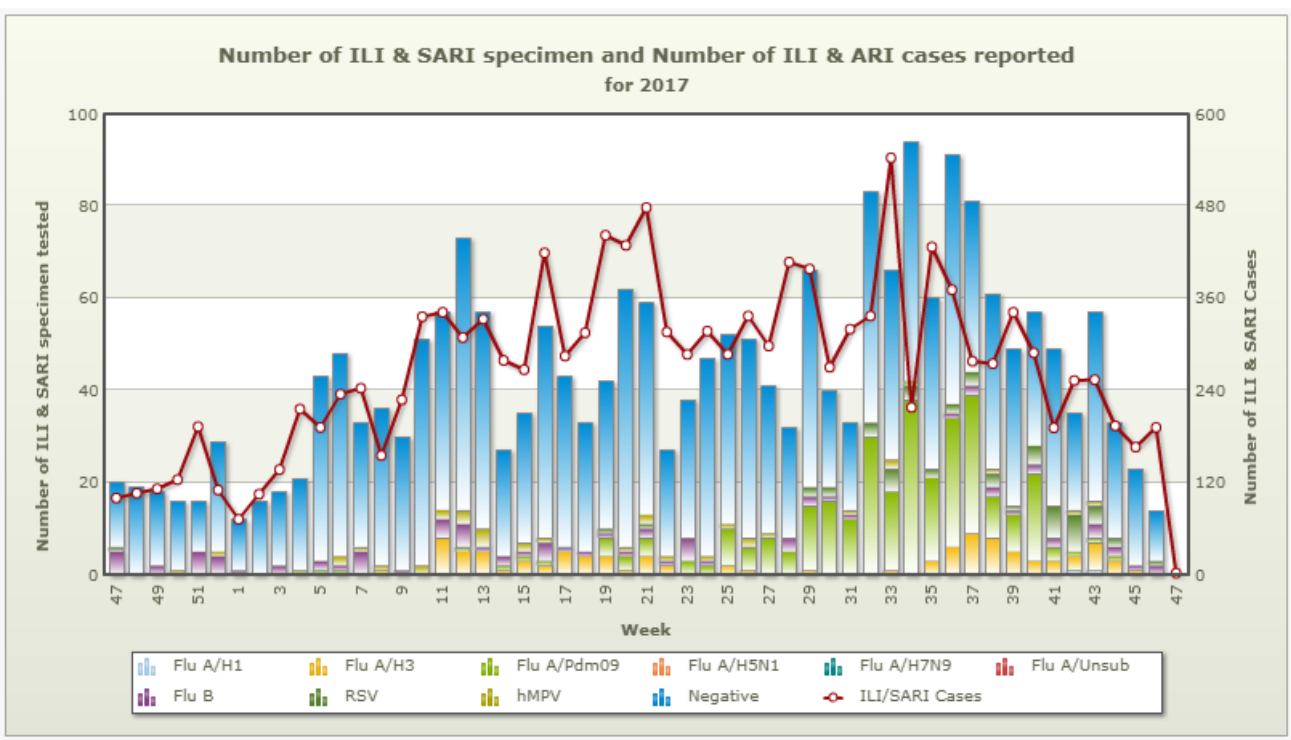




### Summary Report

The predominant seasonal Influenza strain circulated in this week was Influenza B/Victoria. However; over all incidence of Influenza-like-illness (ILI) and Severe Acute Respiratory Infection (SARI) were 32/ 1000 outpatient visits and 5/ 100 hospitalized patients respectively and the Influenza activity had remained low. The most Influenza laboratory-confirmed affected age group was 5-14 years old.

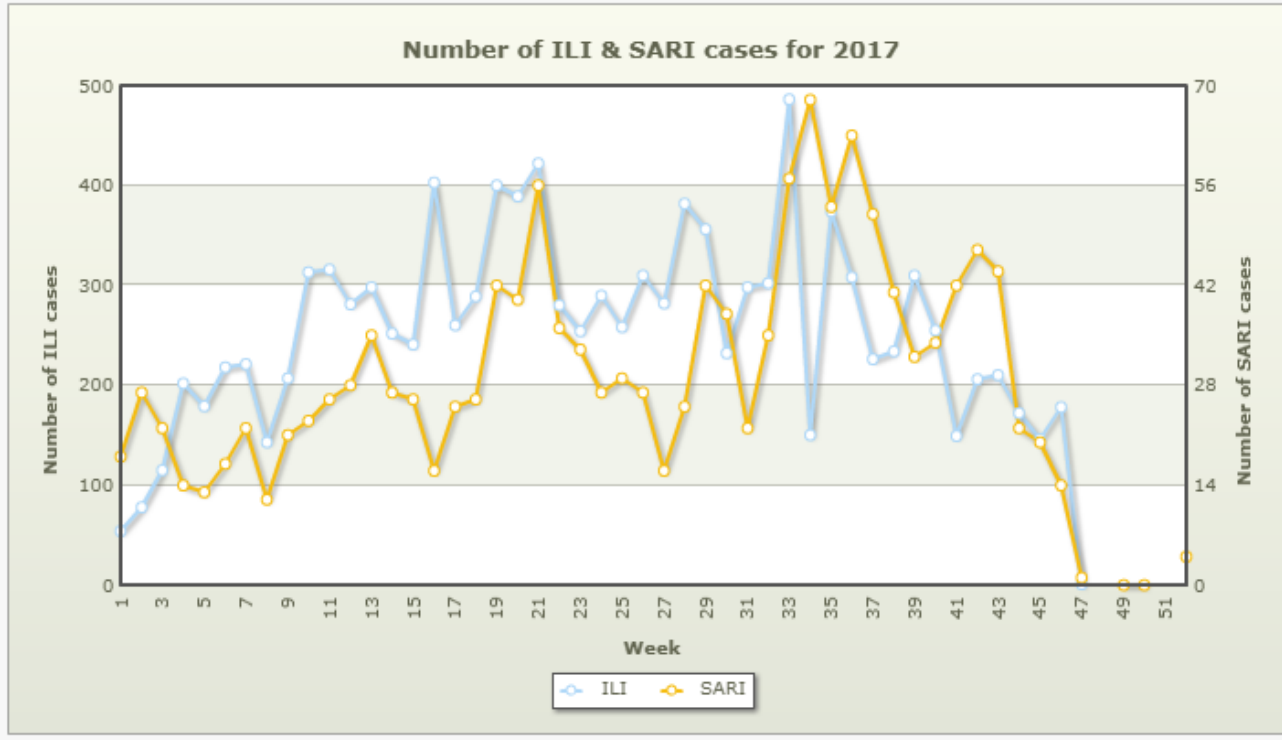


**Figure 1: ILI and SARI cases and influenza virus subtypes**

### 1. Epidemiology Surveillance

#### 1.1 Influenza-Like Illness (ILI) and Severe Acute Respiratory Illness (SARI) cases

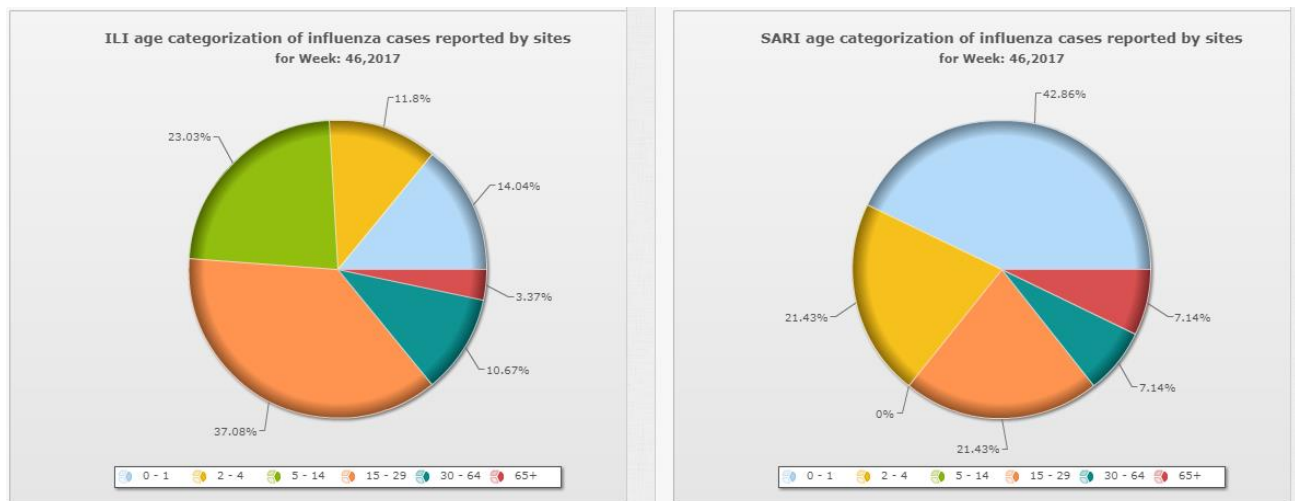
ILI incidence in the sentinel sites for the week was 32 cases per 1000 outpatient visits, which has increased compared to the previous week. Damphu Hospital has reported the highest ILI cases (60 cases) for the week (Figure 4). SARI incidence in the sentinel sites for the week was 5 cases per 100 admitted cases, which was similar compared to the previous week. ERR Hospital; Mongar has reported highest cases (5cases) of SARI.



**Figure 2:** Trend in ILI and SARI cases until week 46

### 1.2 Influenza-Like Illness (ILI) and Severe Acute Respiratory Illness (SARI) affected age group

ILI cases were commonly observed in age group 15-29 years, while SARI cases were commonly seen in 0-1 year (Figure 3).



**Figure 3:** ILI and SARI cases by age groups

### 1.3 Influenza-Like Illness (ILI) and Severe Acute Respiratory Illness (SARI) case distribution by places

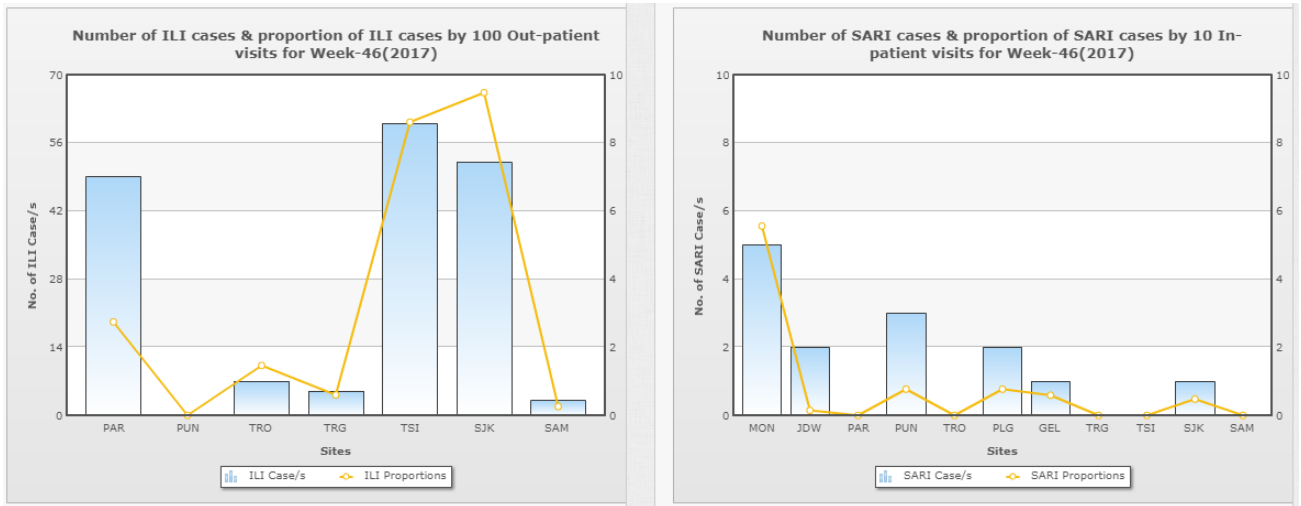


Figure 4: ILI and SARI cases distribution

## 2. Virology Surveillance

### 2.1 Influenza virus and other respiratory viruses among ILI and SARI cases

Out of fourteen respiratory specimens (ILI=12 & SARI = 2) received and tested for influenza viruses by Real Time RT PCR, only two samples were positive for Influenza virus (Influenza B/ Victoria). No SARI samples were positive for Influenza (Figure 6) except for RSV.

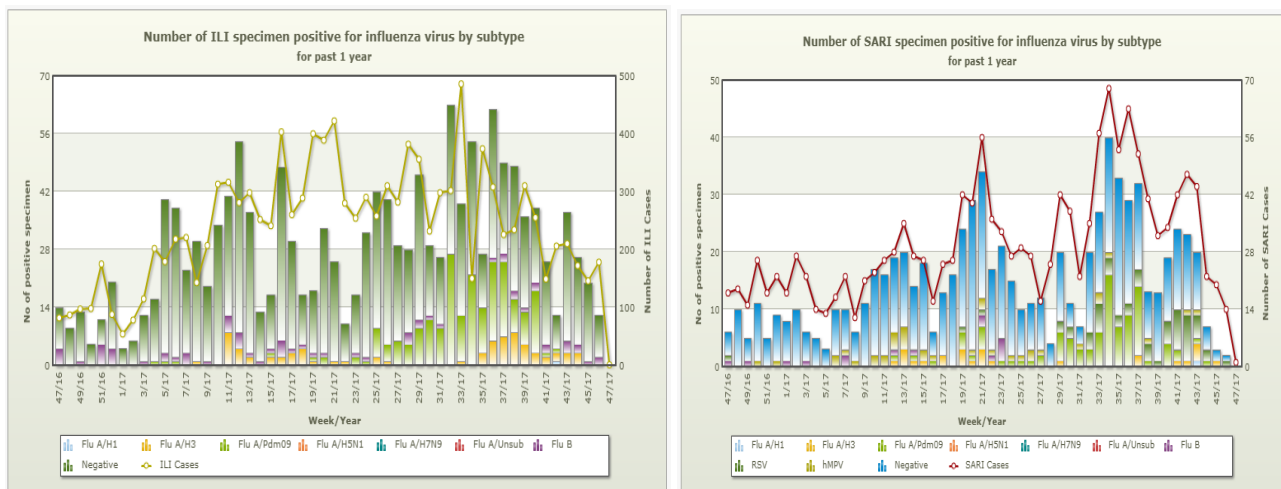


Figure 5: ILI and SARI cases and influenza virus subtypes



### 2.2 Influenza virus and other respiratory viruses positive ILI and SARI cases by age group

There were two laboratory ILI confirmed cases among 5-14 years. None of the SARI samples were positive for Influenza virus (Figure 6). There was one laboratory confirmed RSV case among SARI cases.

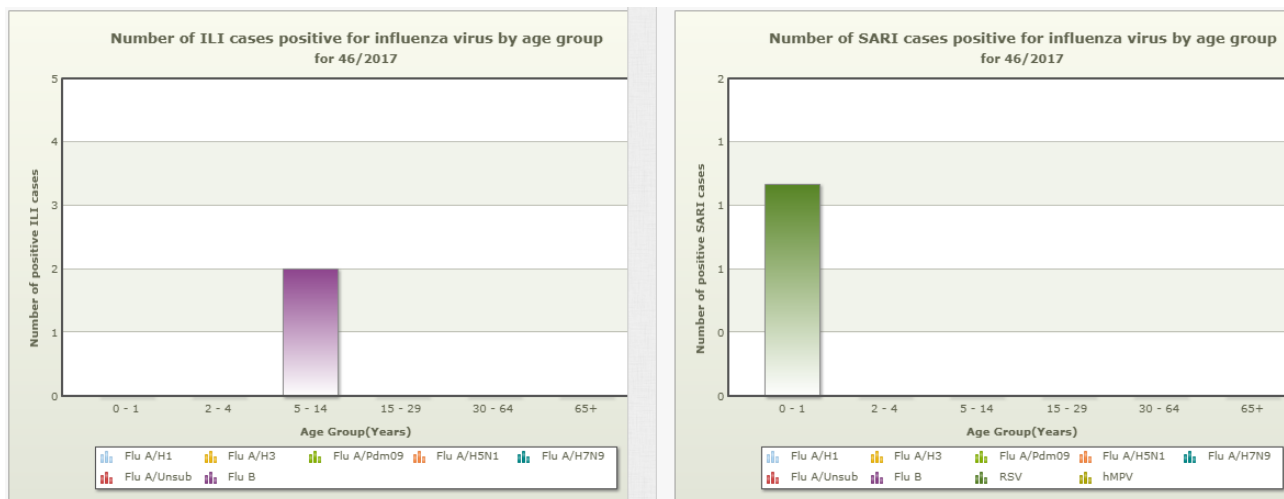


Figure 6: Age distribution by influenza and other respiratory virus positivity

### 3. Influenza Outbreak

No outbreak reported for the week

### 4. Reporting status by sentinel sites

Table 1: Reporting and sample collection by sentinel sites

Number of ILI/SARI cases reported and sample collected by sites for Week:46,2017				
Surveillance sites	ILI Cases	No. of Samples Collected	SARI Cases	No. of Samples Collected
Eastern Regional Referral Hospital, Monggar	NA	0	5	0
Jigme Dorji Wangchuk National Referral Hospital	NA	1	2	0
Paro Hospital	49	1	NR	0
Punakha Hospital	NR	0	3	0
Trongsa Hospital	7	2	0	0
Phuentsholing Hospital	NA	0	2	2
Central Regional Referral Hospital, Gelephu	NA	1	1	1
Trashigang Hospital	5	0	NR	0
Damphu Hospital	60	4	0	0
Samdrup Jongkhar Hospital	52	3	1	0
Samtse Hospital	3	0	0	0



# FluView

## Royal Centre for Disease Control

