



# FluView

## Royal Centre for Disease Control



**Influenza Surveillance, Week 1 (1<sup>st</sup> - 7<sup>th</sup> January) 2018**

### Summary Report

The predominant circulating Influenza virus was Influenza A/H3. The overall incidence of Influenza-like-illness (ILI) and Severe Acute Respiratory Infection (SARI) were 26 /1000 outpatient visits and 10/100 hospitalized patients respectively and the Influenza activity had elevated slightly compared to the previous week. The laboratory-confirmed Influenza viruses were detected mostly in the age-group 30-65 years in ILI cases. No SARI samples were positive for Influenza virus (Figure 1).

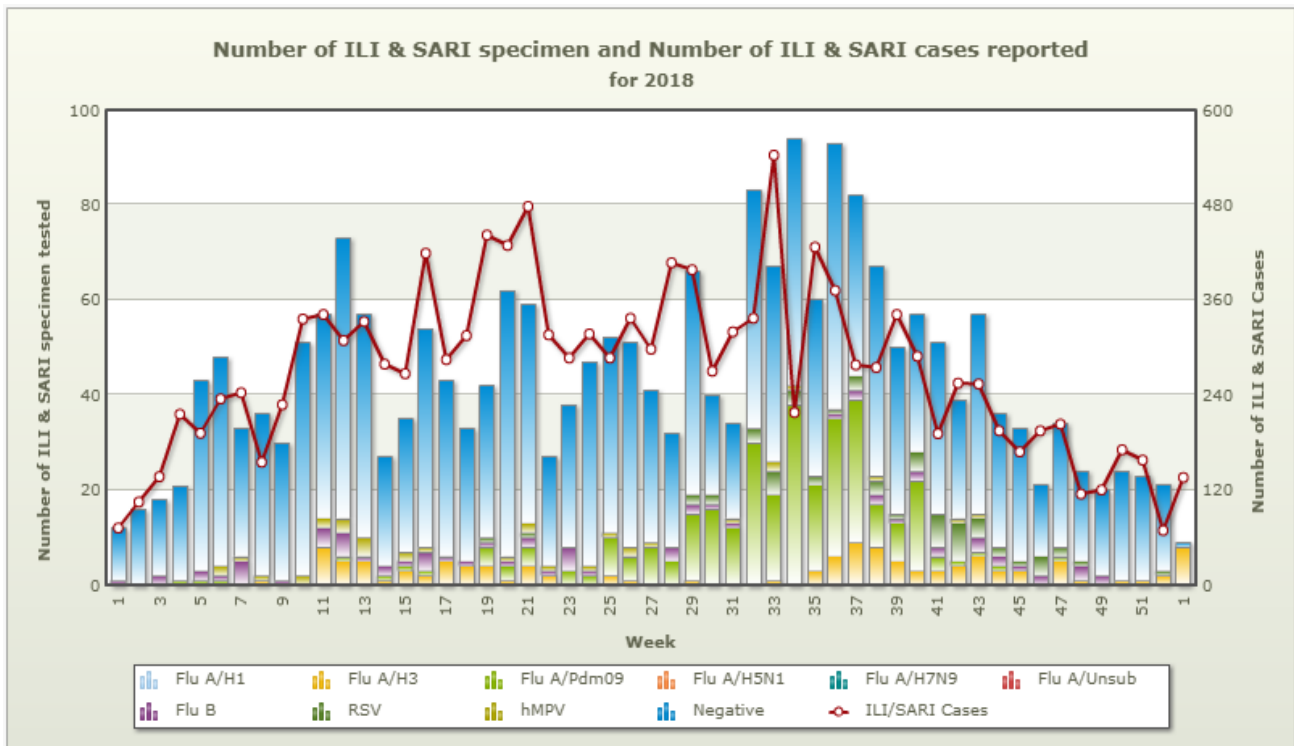
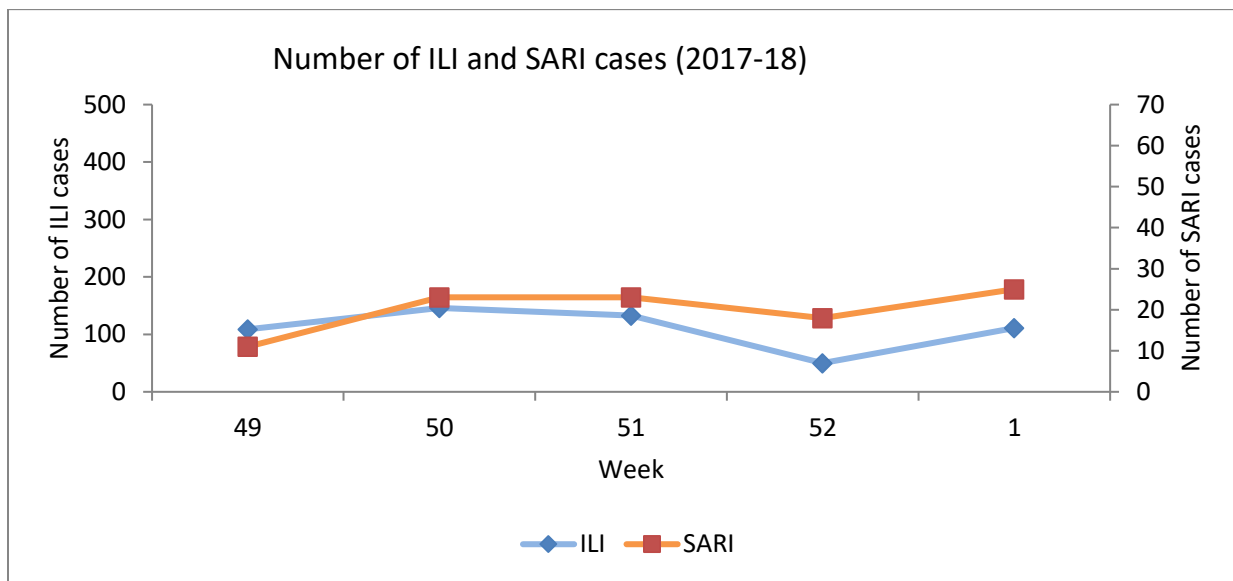


Figure 1 ILI and SARI cases and influenza virus subtypes

## 1. Epidemiology Surveillance

### 1.1 Influenza-Like Illness (ILI) and Severe Acute Respiratory Illness (SARI) cases

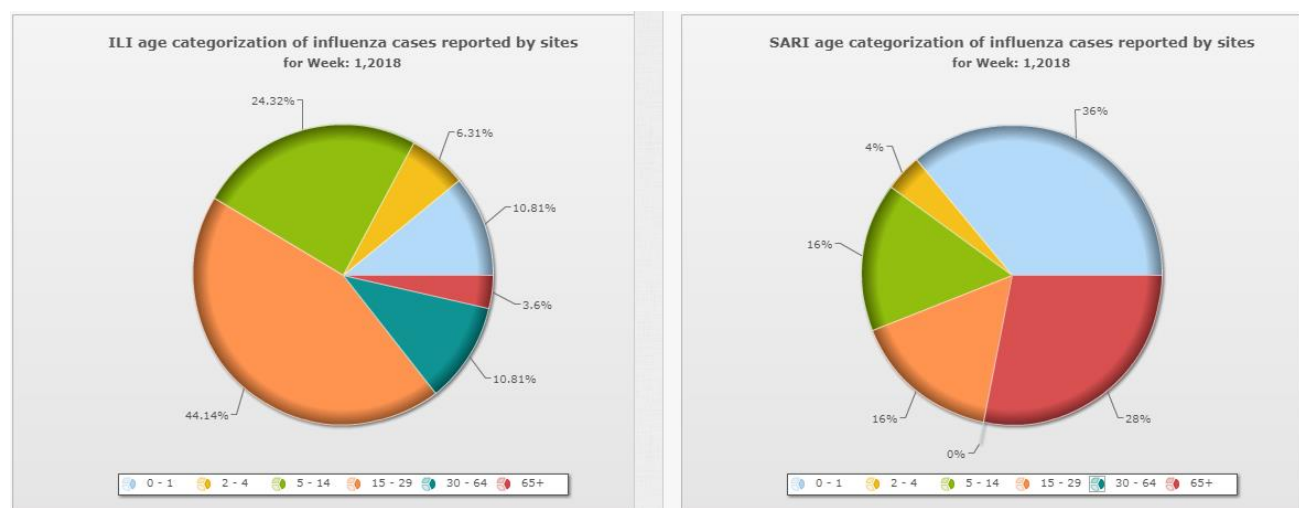
ILI incidence in the sentinel sites has significantly increased as compared to previous week with 26 cases per 1000 outpatient visits. Samdrup Jongkhar Hospital has reported the highest ILI cases (36 cases) followed by Paro Hospital for the week (Figure 2). SARI incidence in the sentinel sites for the week was 10 cases per 100 admitted cases, which is slightly higher as compared to the previous week. Punakha Hospital has reported highest cases (6 cases) of SARI.



**Figure 2** Trend in ILI and SARI cases until week 1, 2018 from past year's week

### 1.2 Influenza-Like Illness (ILI) and Severe Acute Respiratory Illness (SARI) affected age group

ILI cases were mostly observed among age-group 15-29 years, while SARI cases were mostly observed in age group 0-1 years (Figure 3).



**Figure 3** ILI and SARI cases by age groups



### 1.3 Influenza-Like Illness (ILI) and Severe Acute Respiratory Illness (SARI) case distribution by places

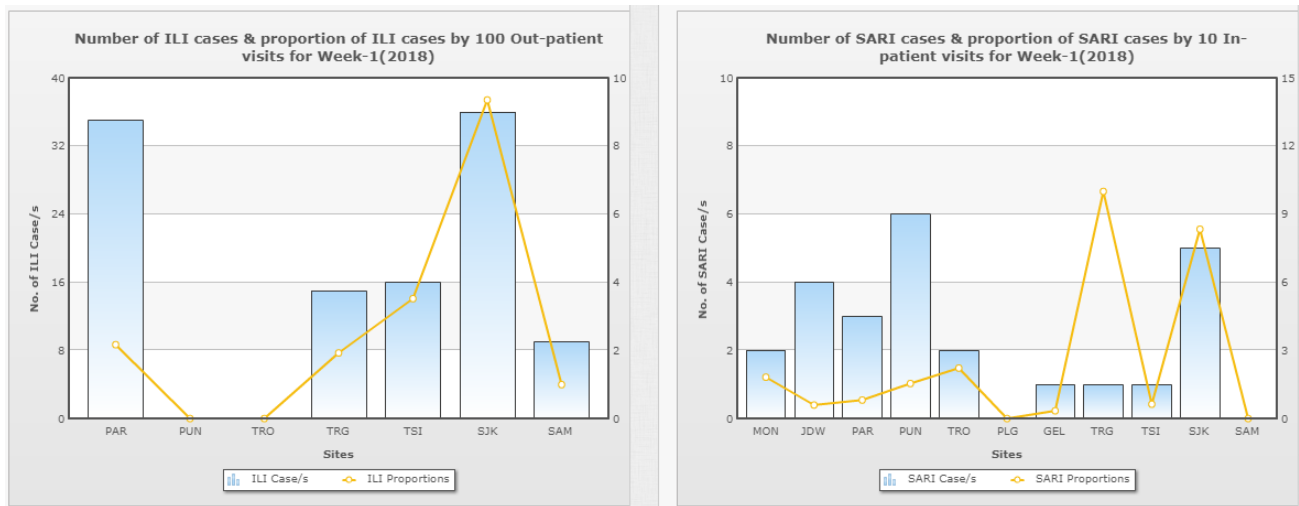


Figure 4 ILI and SARI cases distribution

## 2. Virology Surveillance

### 2.1 Influenza virus and other respiratory viruses among ILI and SARI cases

A total of thirteen respiratory specimens (ILI=9 & SARI = 4) were received and tested for influenza viruses by Real Time RT PCR. Influenza A/H3 was predominantly detected and none of the SARI samples were positive for Influenza virus (Figure 5).

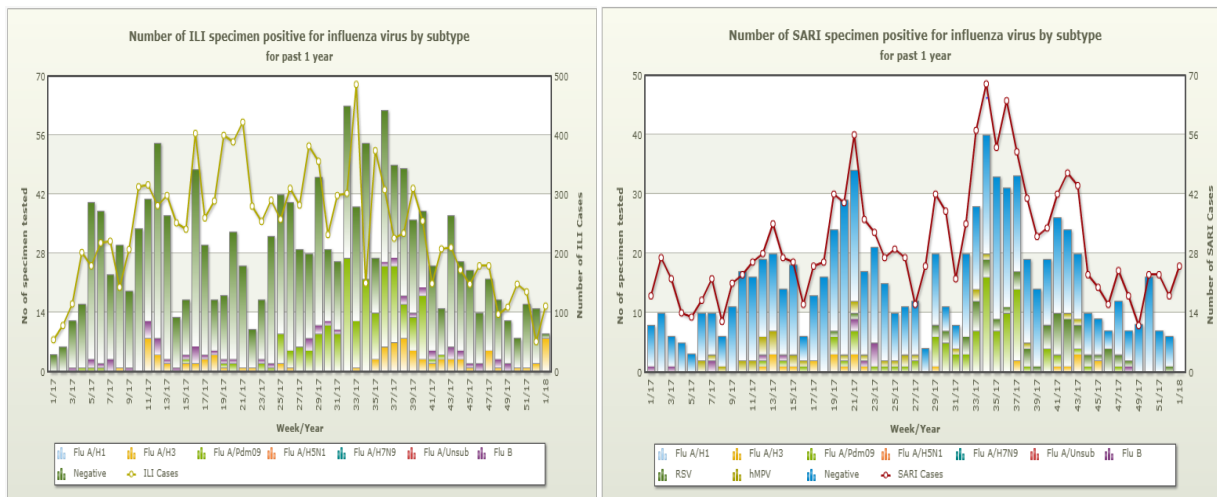


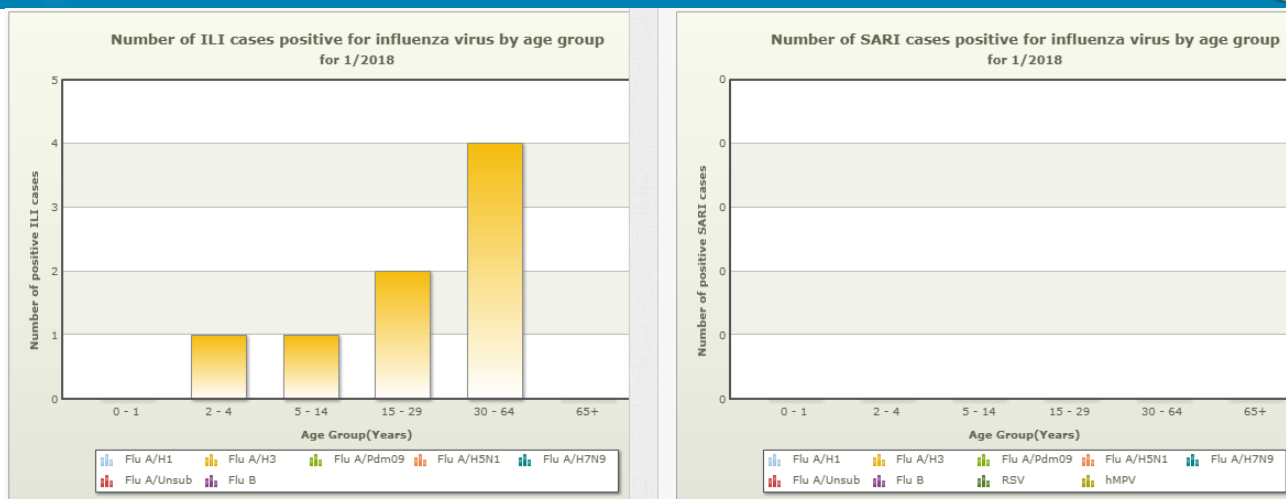
Figure 5 ILI and SARI cases and influenza virus subtypes

### 2.2 Influenza virus and other respiratory viruses positive ILI and SARI cases by age group

Influenza A/H3 was detected in age ranged 2-64 years of ILI cases (Figure 6).

# FluView

## Royal Centre for Disease Control



**Figure 6** Age distribution by influenza and other respiratory virus positivity

### 3. Influenza Outbreak

No outbreak reported

### 4. Reporting status by sentinel sites

**Table 1** Reporting and sample collection by sentinel sites

Number of ILI/SARI cases reported and sample collected by sites for Week:1,2018				
Surveillance sites	ILI Cases	No. of Samples Collected	SARI Cases	No. of Samples Collected
Eastern Regional Referral Hospital, Mongar	NA	0	2	0
Jigme Dorji Wangchuk National Referral Hospital	NA	0	4	3
Paro Hospital	35	0	3	0
Punakha Hospital	NR	0	6	0
Trongsa Hospital	NR	0	2	0
Phuentsholing Hospital	NA	0	0	0
Central Regional Referral Hospital, Gelephu	NA	0	1	0
Trashigang Hospital	15	9	1	1
Damphu Hospital	16	0	1	0
Samdrup Jongkhar Hospital	36	0	5	0
Samtse Hospital	9	0	0	0