



Weekly Flu View

Royal Centre for Disease Control



Wangchutaba, Serbithang, Thimphu, Bhutan.

Post Box No. 667, EPABX: +975-2-350-577/578, Tele: +975-02-323317, Fax: +975-2-332464
 web: <http://www.rcdc.gov.bt>, E Mail: rcdc.bhutan@gmail.com

Influenza Surveillance, Week 23 (4th – 10th June) 2018

Summary Report

The predominant seasonal Influenza strain circulated in this week was Influenza B/Yamagata. The overall incidence of Influenza-like-illness (ILI) and Severe Acute Respiratory Infection (SARI) were 22/1000 outpatient visits and 7/100 hospitalized patients respectively. The most laboratory-confirmed affected age group belonged to 5-14 and 15-29 years age group (Figure 1).

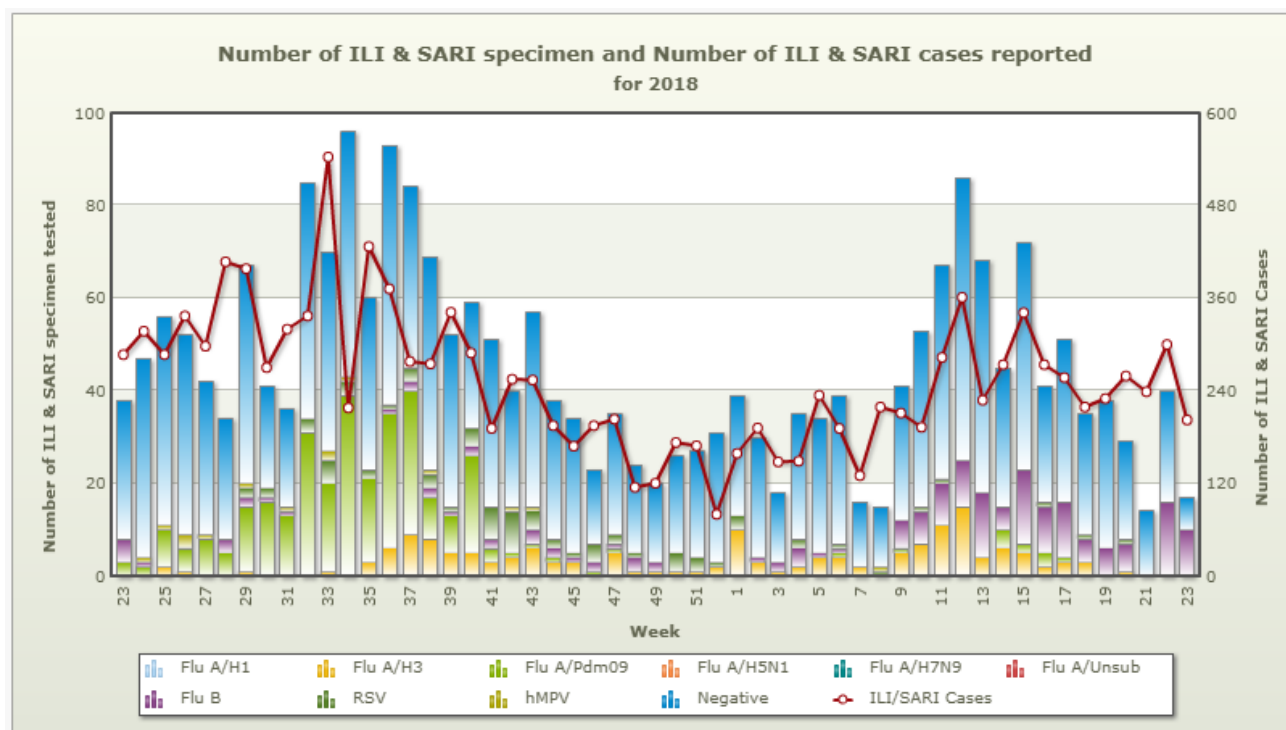


Figure 1 ILI and SARI cases and influenza virus subtypes

1. Epidemiology Surveillance

1.1 Influenza-Like Illness (ILI) and Severe Acute Respiratory Illness (SARI) cases

ILI incidence in the sentinel sites was 22/1000 outpatients, which has decreased by 15% from the previous week. Samtse Hospital has reported the highest ILI cases (66 cases) followed by Paro Hospital (62 cases)

(Figure 2). SARI incidence in the sentinel sites was 7 cases per 100 admitted cases, a slight increase of 2% from the previous week. Samtse Hospital has reported the highest SARI cases (6 cases).

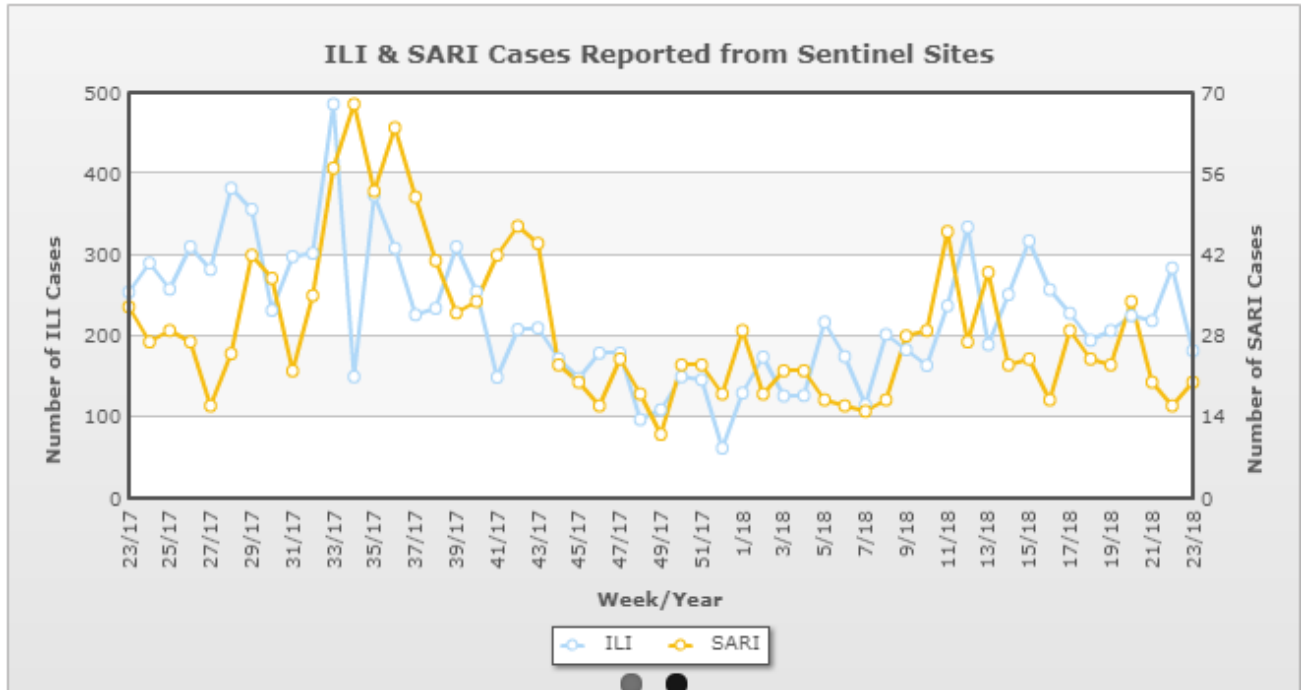


Figure 2 Trend in ILI and SARI cases until week 23, 2018 from past year's week

1.2 Influenza-Like Illness (ILI) and Severe Acute Respiratory Illness (SARI) affected age group

Maximum ILI cases were observed among 15-29 followed by 5-14 years age group, while maximum SARI cases were observed among 2 – 4 years age group (Figure 3).

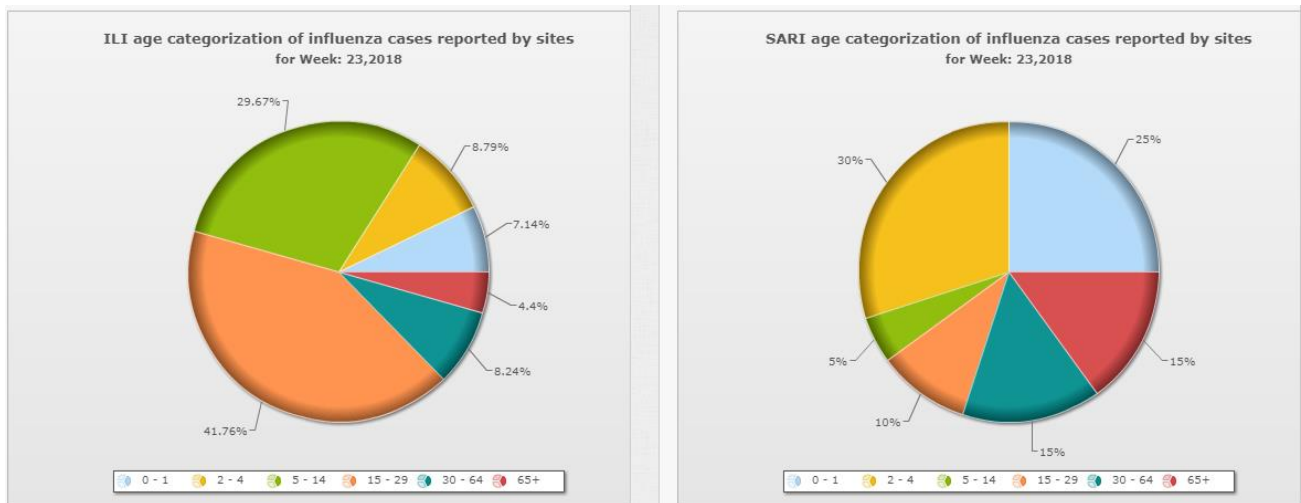


Figure 3 ILI and SARI cases by age groups

1.3 Influenza-Like Illness (ILI) and Severe Acute Respiratory Illness (SARI) case distribution by places

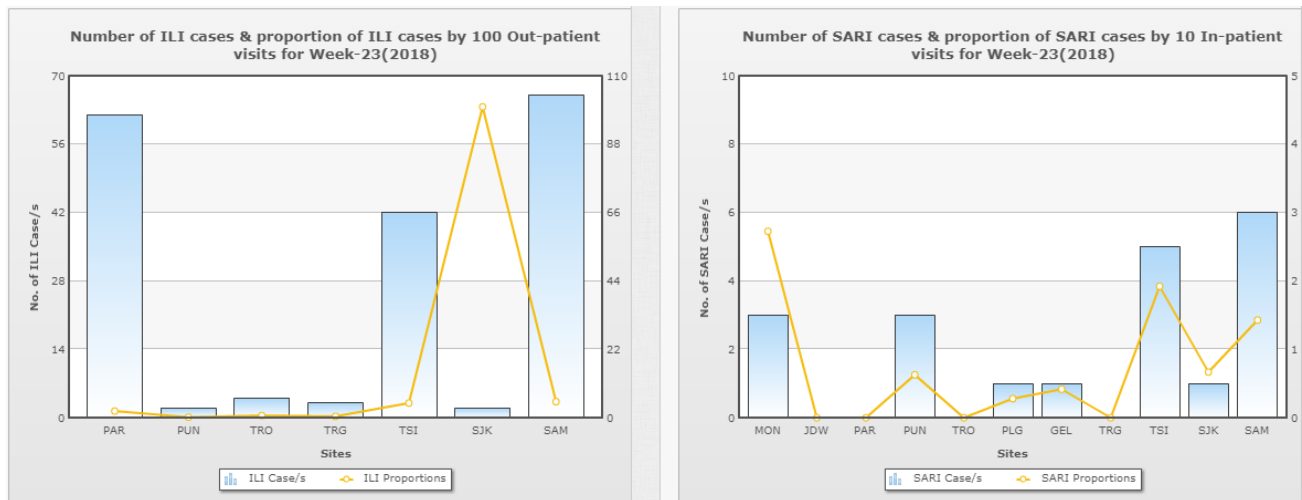


Figure 4 ILI and SARI cases distribution

2. Virology Surveillance

2.1 Influenza virus and other respiratory viruses among ILI and SARI cases

A total of 18 respiratory samples (ILI=16 & SARI=2) were received for testing influenza by Real Time RT PCR. Influenza B/Yamagata was predominantly detected among ILI cases. SARI cases were all negative for influenza viruses (Figure 5).

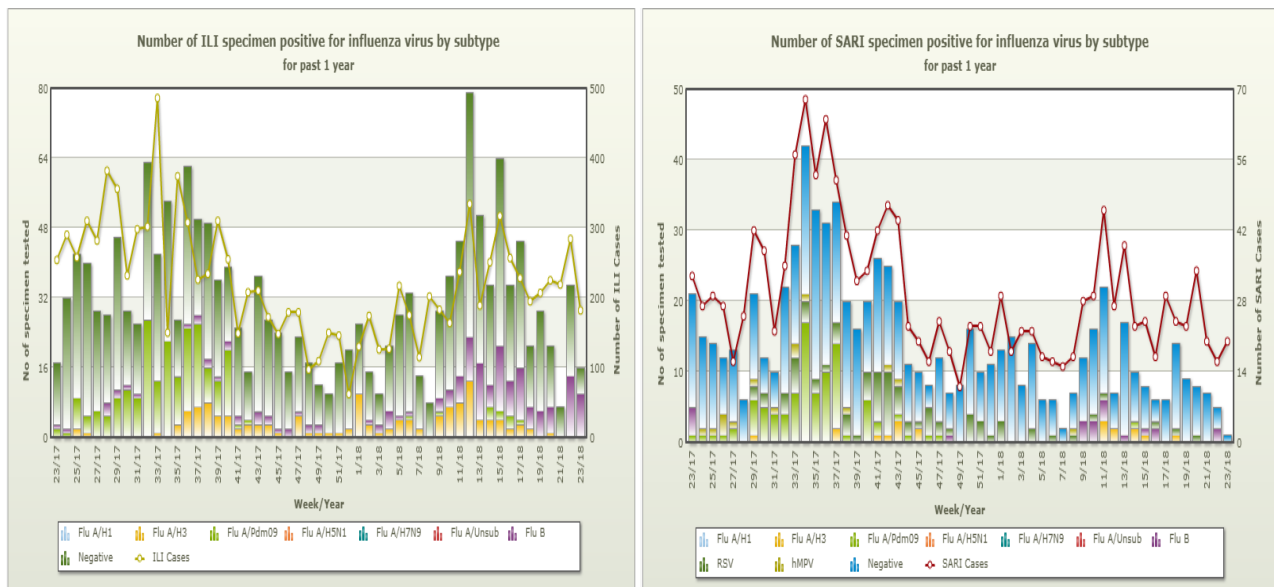


Figure 5 ILI and SARI cases and influenza virus subtypes

2.2 Influenza virus and other respiratory viruses positive ILI and SARI cases by age group

Influenza B/Yamagata was detected in age group 5-14 years and 15-29 years among ILI cases (Figure 6).

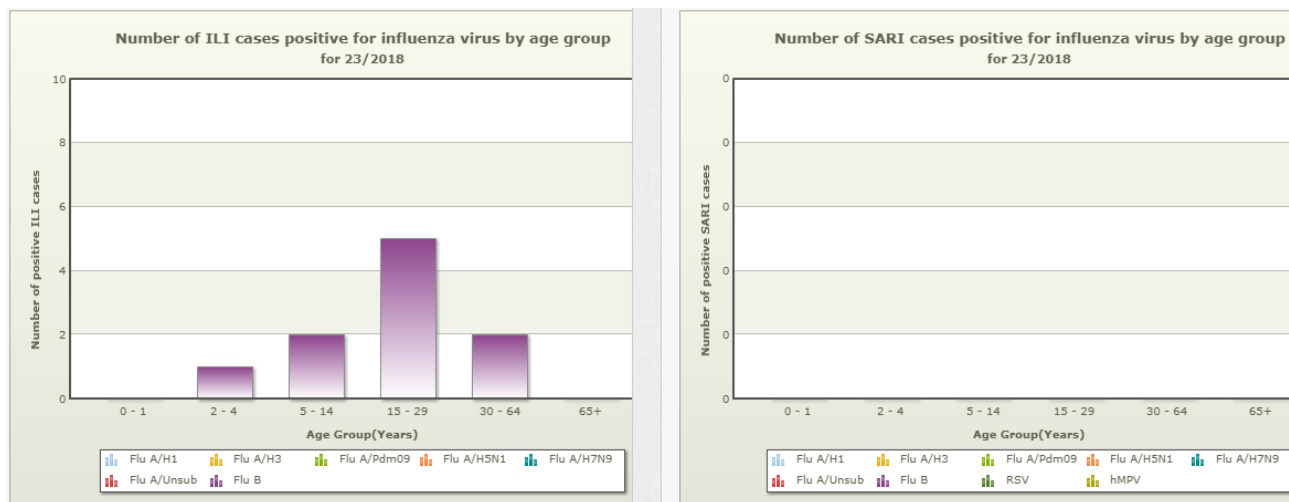


Figure 6 Age distribution by influenza and other respiratory virus positivity

3. Influenza Outbreak

No outbreak reported.

4. Reporting status by sentinel sites

Table 1 Reporting and sample collection by sentinel sites

| Surveillance sites | ILI Cases | No. of Samples Collected | SARI Cases | No. of Samples Collected |
|---|-----------|--------------------------|------------|--------------------------|
| Eastern Regional Referral Hospital, Mongar | NA | 1 | 3 | 0 |
| Jigme Dorji Wangchuk National Referral Hospital | NA | 0 | 0 | 0 |
| Paro Hospital | 62 | 1 | NR | 0 |
| Punakha Hospital | 2 | 2 | 3 | 0 |
| Trongsa Hospital | 4 | 4 | 0 | 0 |
| Phuentsholing Hospital | NA | 0 | 1 | 0 |
| Central Regional Referral Hospital, Gelephu | NA | 0 | 1 | 1 |
| Trashigang Hospital | 3 | 0 | NR | 0 |
| Damphu Hospital | 42 | 6 | 5 | 0 |
| Samdrup Jongkhar Hospital | 2 | 2 | 1 | 1 |
| Samtse Hospital | 66 | 0 | 6 | 1 |