



# Weekly Flu View

## Royal Centre for Disease Control



Wangchutaba, Serbithang, Thimphu, Bhutan.

Post Box No. 667, EPABX: +975-2-350-577/578, Tele: +975-02-323317, Fax: +975-2-332464  
 web: <http://www.rcdc.gov.bt>, E Mail: [rcdc.bhutan@gmail.com](mailto:rcdc.bhutan@gmail.com)

### Influenza Surveillance, Week 38 (17<sup>th</sup> – 23<sup>rd</sup> September) 2018

#### Summary Report

The overall incidence of Influenza-Like-Illness (ILI) and Severe Acute Respiratory Infection (SARI) were 26/1000 outpatient visits and 7/100 hospitalized patients respectively. None of the samples tested positive for influenza virus (Figure 1).

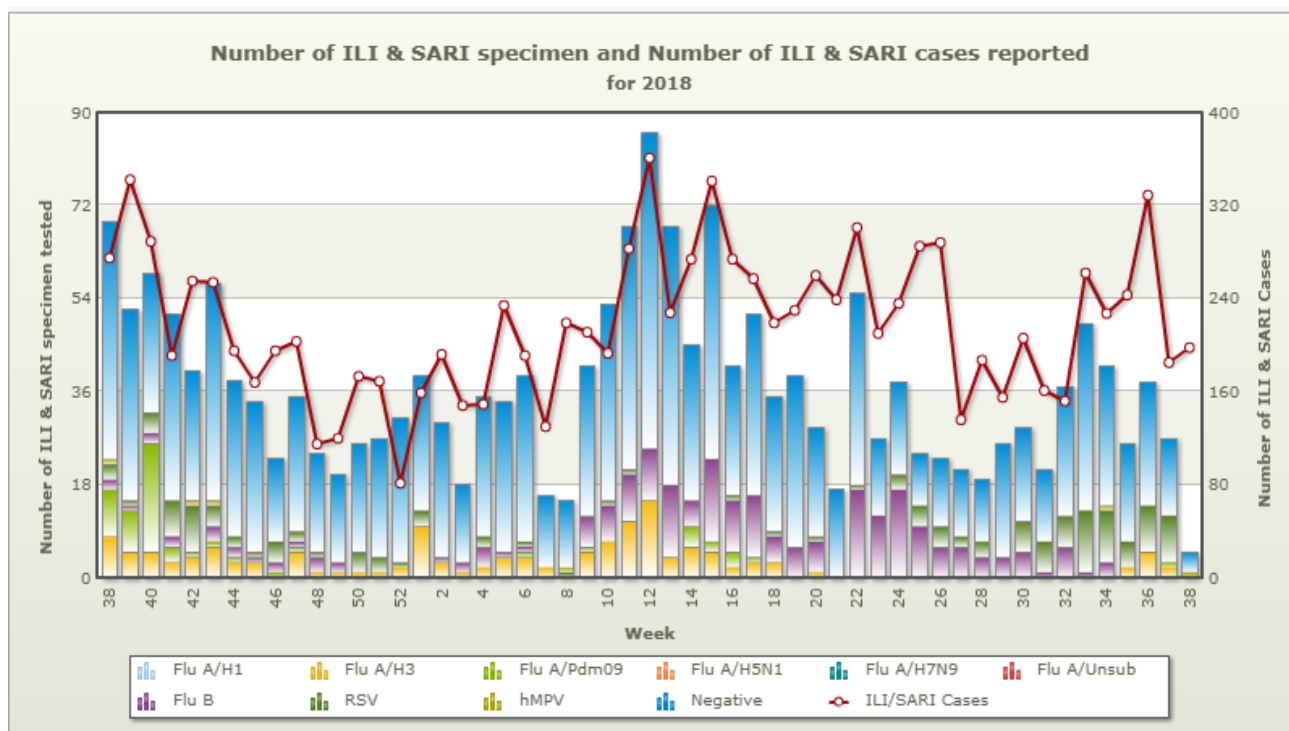


Figure 1 ILI and SARI cases and influenza virus subtypes

#### 1. Epidemiological Surveillance

##### 1.1 Influenza-Like Illness (ILI) and Severe Acute Respiratory Illness (SARI) cases

ILI incidence in the sentinel sites was 26/1000 outpatients, which has remained same as the previous week. Samtse Hospital has reported the highest ILI cases (109 cases) (Figure 2). SARI incidence in the sentinel sites was 7 per 100 admitted cases, which has again decreased by 1% from the previous week. JDWNR Hospital has reported the highest SARI cases (8 cases).

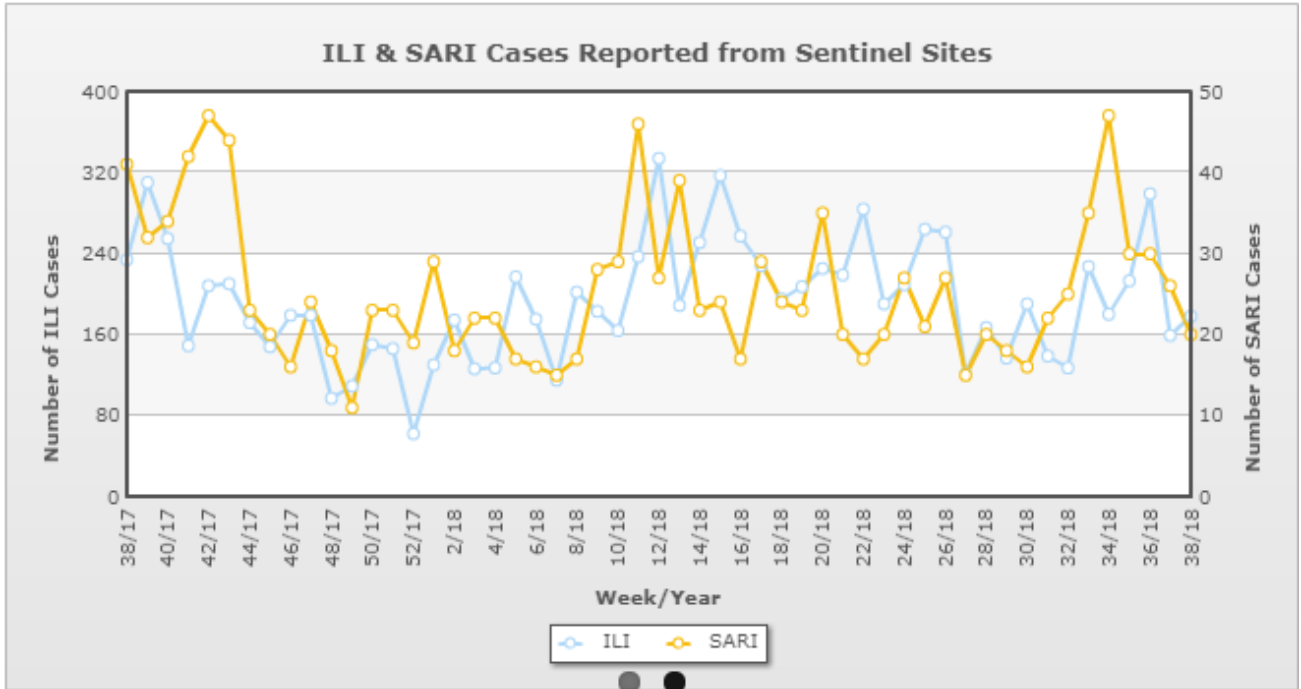


Figure 2 Trend in ILI and SARI cases until week 38, 2018 from past year's week

### 1.2 Influenza-Like Illness (ILI) and Severe Acute Respiratory Illness (SARI) affected age group

Maximum ILI cases were observed among 15-29 years age group, while maximum SARI cases were observed among 0 – 1 years age group (Figure 3).

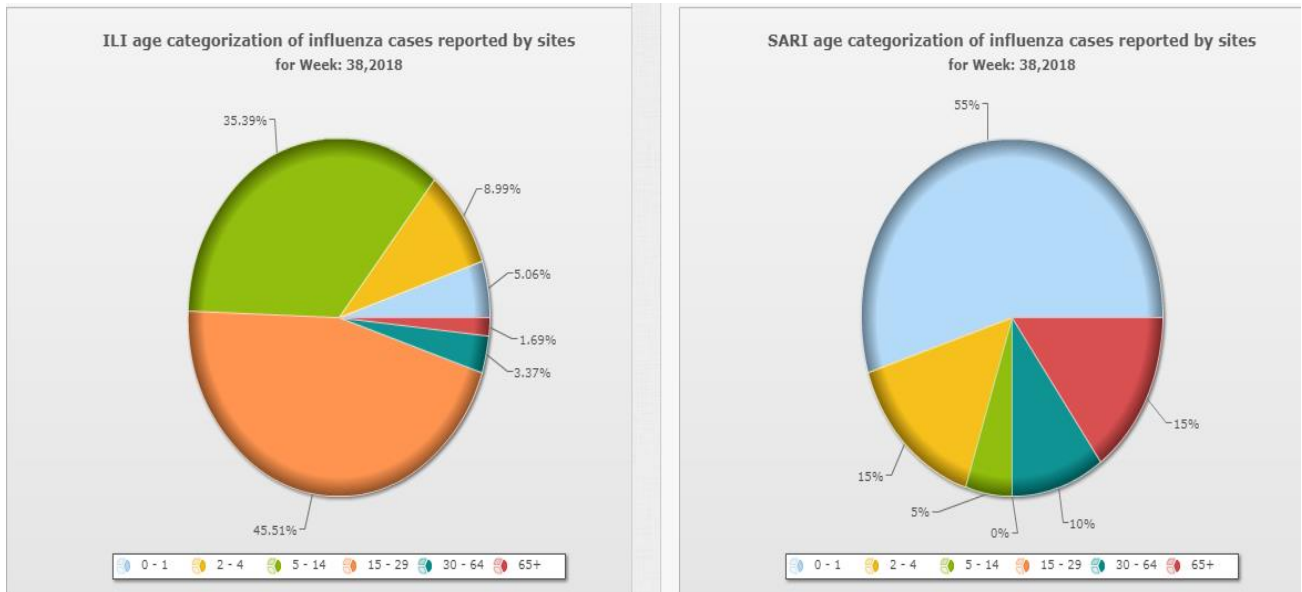


Figure 3 ILI and SARI cases by age groups

### 1.3 Influenza-Like Illness (ILI) and Severe Acute Respiratory Illness (SARI) case distribution by places

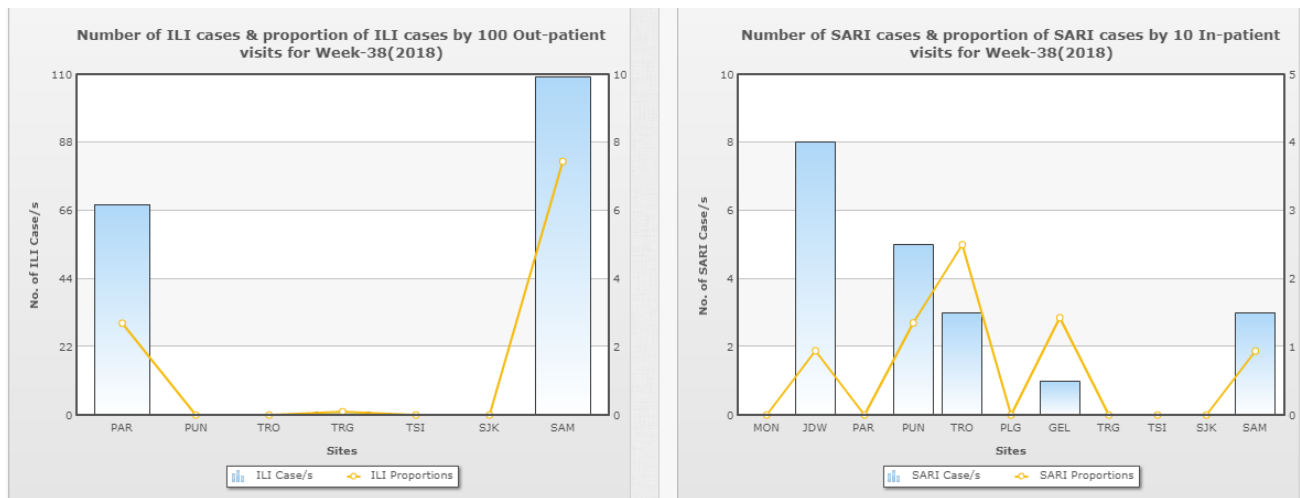


Figure 4 ILI and SARI cases distribution

## 2. Virology Surveillance

### 2.1 Influenza virus and other respiratory viruses among ILI and SARI cases

Total of 6 respiratory samples (ILI: 4 & SARI: 2) were received for testing influenza by Real Time RT PCR. Both ILI and SARI samples tested negative for influenza virus (Figure 5).

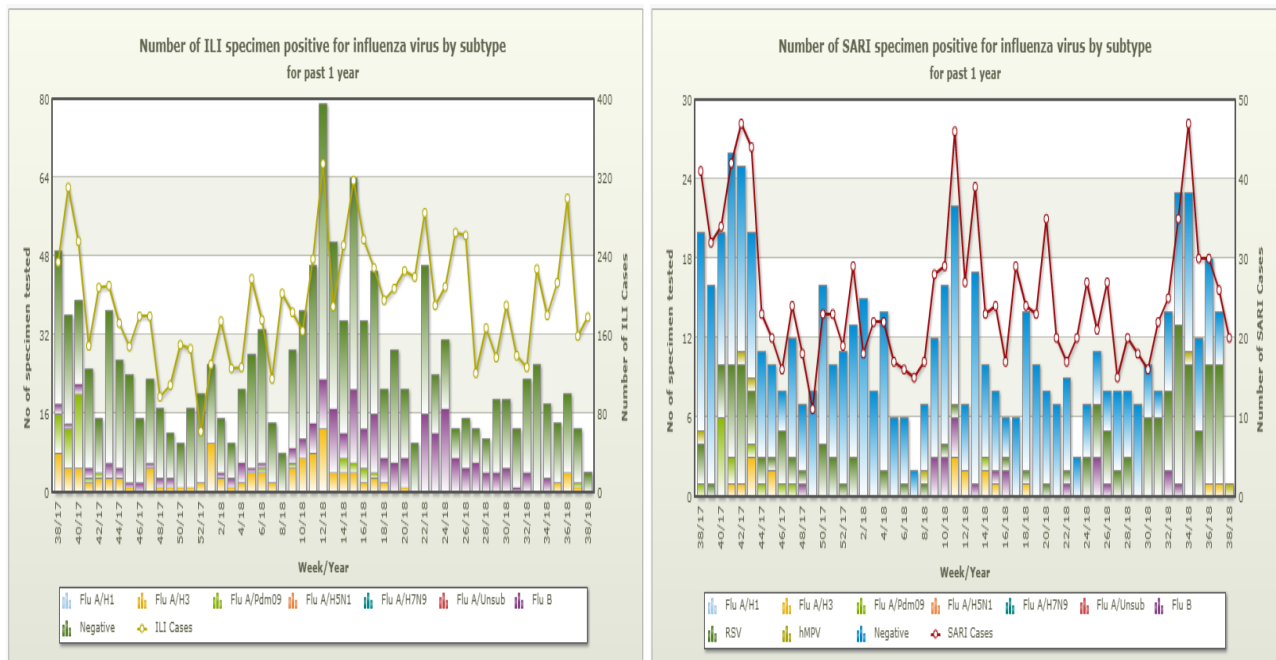
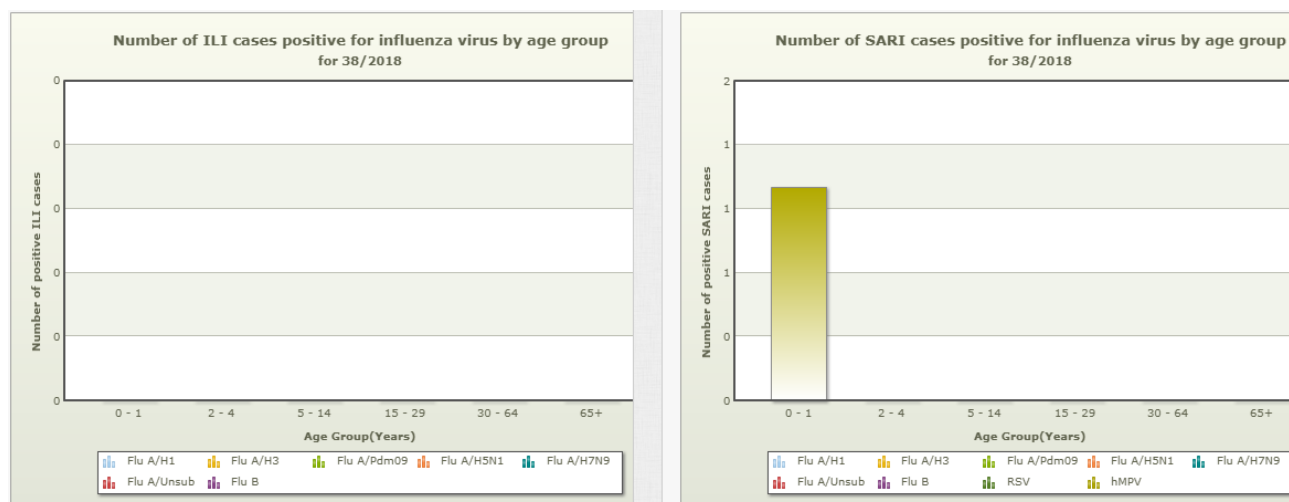


Figure 5 ILI and SARI cases and influenza virus subtypes

## 2.2 Influenza virus and other respiratory viruses positive ILI and SARI cases by age group

Influenza virus was not detected in any of age groups (Figure 6).



**Figure 6** Age distribution by influenza and other respiratory virus positivity

### 3. Influenza Outbreak

No outbreaks were reported in the week.

### 4. Reporting status by sentinel sites

**Table 1** Reporting and sample collection by sentinel sites

Surveillance sites	ILI Cases	No. of Samples Collected	SARI Cases	No. of Samples Collected
Eastern Regional Referral Hospital, Mongar	NA	0	0	0
Jigme Dorji Wangchuk National Referral Hospital	NA	0	8	7
Paro Hospital	68	2	NR	0
Punakha Hospital	0	0	5	0
Trongsa Hospital	0	0	3	0
Phuentsholing Hospital	NA	0	0	0
Central Regional Referral Hospital, Gelephu	NA	0	1	0
Trashigang Hospital	1	1	0	0
Damphu Hospital	NR	0	NR	0
Samdrup Jongkhar Hospital	NR	0	0	0
Samtse Hospital	109	3	3	0