



Weekly Flu View

Royal Centre for Disease Control



Wangchutaba, Serbithang, Thimphu, Bhutan.

Post Box No. 667, EPABX: +975-2-350-577/578, Tele: +975-02-323317, Fax: +975-2-332464
 web: <http://www.rcdc.gov.bt>, E Mail: rcdc.bhutan@gmail.com

Influenza Surveillance, Week 18 (29th April – 5th May) 2019

Summary Report

Influenza activity remained lower than the alert threshold but above the national baseline in the country. Influenza B co-circulated predominantly. A flu outbreak was reported from one of the schools in the West of the country. The Influenza Like Illness (ILI) associated laboratory confirmed influenza cases were detected in all the age groups except 0-1 and 15-29 years. The laboratory influenza confirmed SARI cases were detected in two extreme age groups; 0-4 and 65+ years. No influenza associated SARI death reported.

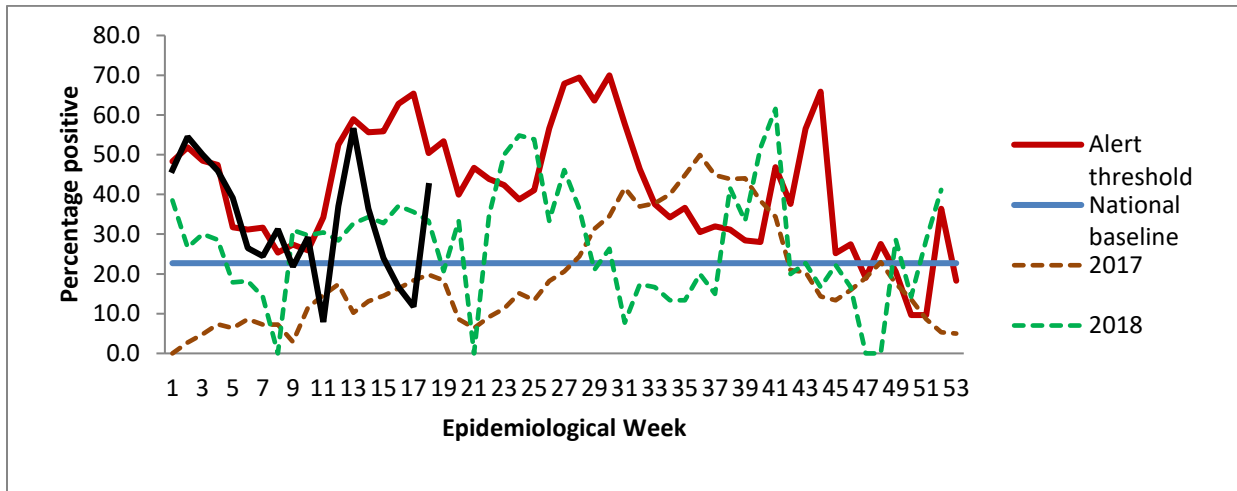


Figure 1: Proportion of laboratory-confirmed Influenza associated ILI cases

Virological surveillance

The proportion positivity of Influenza among outpatient visits for ILI across the sentinel sites was below the alert threshold but above the national baseline and also higher than the last two years (Figure 1).

The proportion of respiratory specimens testing positive for influenza viruses increased significantly compared to the cumulative proportion of positivity (Table 1). Influenza B/Victoria was detected to be predominantly circulating. The proportion of laboratory confirmed ILI cases and the influenza associated SARI hospitalization increased compared to the last week (Figure 2).

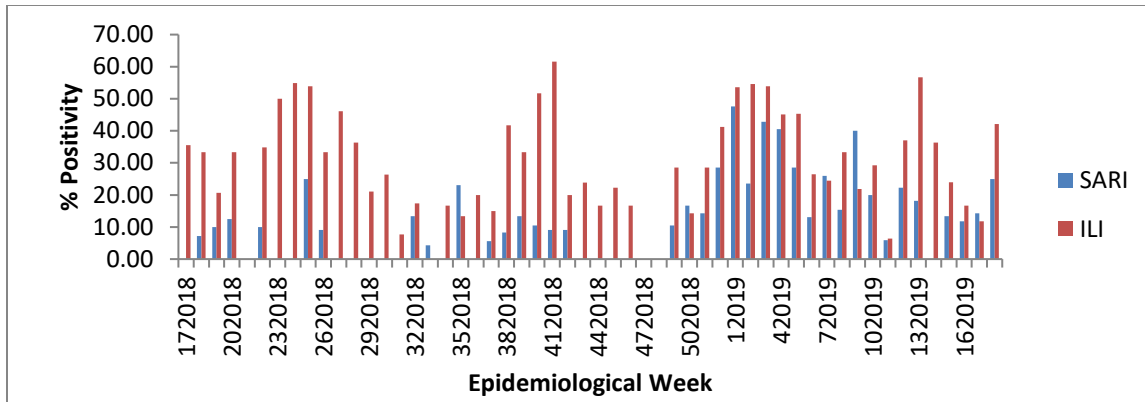


Figure 2: Proportion of Laboratory confirmed flu positivity among ILI and SARI cases till week 18

Table 1: The results of tests performed by RCDC are summarized below

	Week 18	Data Cumulative since January 1, 2019 (Week 1)
No. of specimens tested	54	1186
No. of positive specimens (%)	13 (24%)	353 (30%)
Positive specimens by type/subtypes		
Influenza A	1 (8%)	319 (90%)
(H1N1)pdm09	1 (100%)	303 (95%)
H3N2	0	7 (2%)
Subtyping not performed	0	9 (3%)
Influenza B	12 (92%)	34 (10%)
Yamagata lineage	2 (17%)	6 (18%)
Victoria lineage	10 (83%)	24 (71%)
Lineage not performed	0	4 (11%)

Epidemiological surveillance

The proportion of outpatient visits due to ILI (29 per 1000 out patient visits) and the proportion of SARI associated hospitalizations (11 per 100 hospitalizations) remained similar to the last week. The highest rate of ILI associated out patient visits and SARI associated hospitalization were seen in 5-14 and 2-4 years of age respectively (Figure 3).

However, among the laboratory confirmed ILI cases, the age groups affected were all the age groups except for 0-1 and 15-29 years old while 0-4 and 65+ years old were affected by Influenza among SARI hospitalizations (Figure 4).

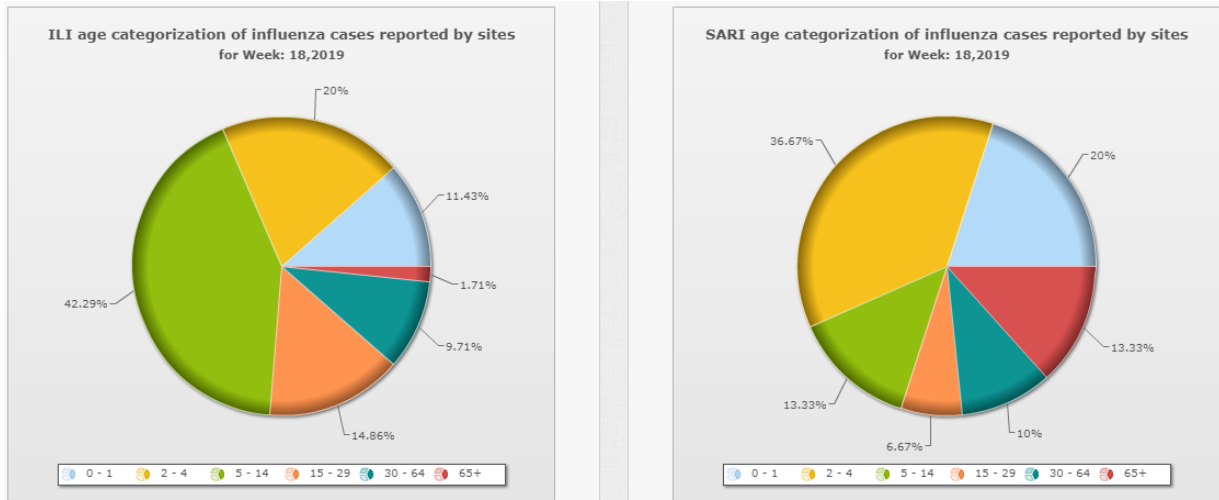


Figure 3: ILI and SARI cases* by age groups

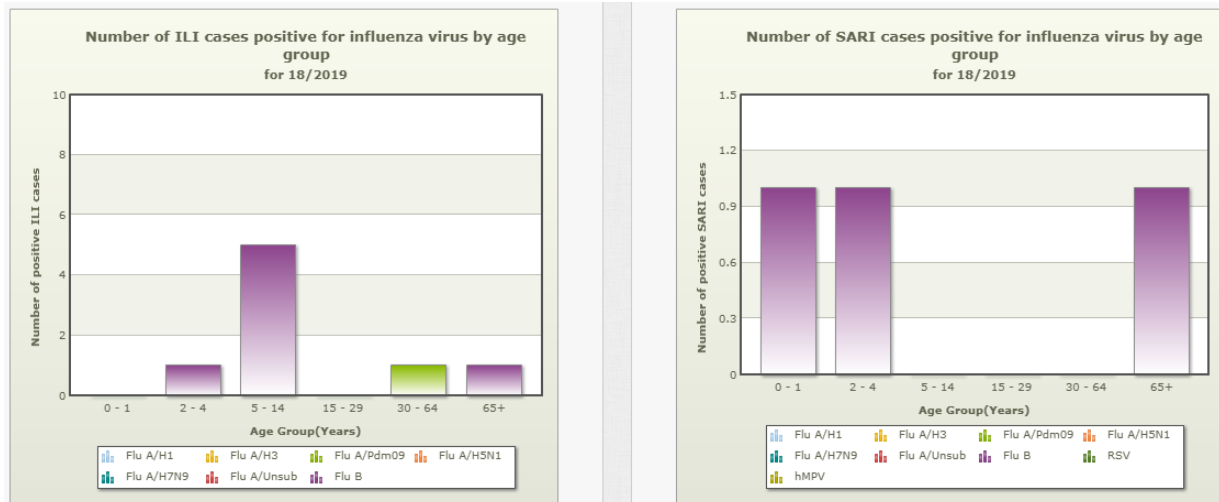


Figure 4: Laboratory-confirmed ILI and SARI cases by age groups

Influenza associated mortality

No flu associated SARI death was reported.

Influenza Outbreak

The outbreak was reported from Khanku Middle Secondary School, Paro which had affected seventy two students. Out of nine samples tested, four samples were positive; two were A/H1N1 (pdm09) and other two were fluB.

Reporting status by sentinel sites

Table 2: Reporting and sample collection by sentinel sites

Number of ILI/SARI cases reported and sample collected by sites for Week:18,2019				
Surveillance sites	ILI Cases	No. of Samples Collected	SARI Cases	No. of Samples Collected
Eastern Regional Referral Hospital,Monggar	NA	0	2	0
Jigme Dorji Wangchuk National Referral Hospital	NA	0	3	3
Paro Hospital	76	9	7	5
Punakha Hospital	4	4	2	0
Trongsa Hospital	51	1	2	2
Phuentsholing Hospital	NA	0	7	0
Central Regional Referral Hospital, Gelephu	NA	1	1	0
Trashigang Hospital	12	0	2	0
Damphu Hospital	2	0	NR	0
Samdrup Jongkhar Hospital	1	1	0	0
Samtse Hospital	28	4	4	4

NR: Not Reported, NA: Not Applicable

Cases*; patients meeting case definition with but not laboratory confirmed