

# MONTHLY DISEASES EPIDEMIOLOGY REPORT

## Royal Centre for Disease Control

DoPH, Ministry of Health

Wangchutaba, Serbithang, Thimphu, Bhutan.

Post Box No. 667, Tele: +975-02-350577/78, Fax: +975-2-332464

web: <http://www.rcdc.gov.bt>, E Mail: [rcdc.bhutan@gmail.com](mailto:rcdc.bhutan@gmail.com)

September (Epidemiological Weeks 35-38), 2021

### 1. Highlights on COVID-19 surveillance and NEWARS reporting

#### I. Highlights on COVID-19:

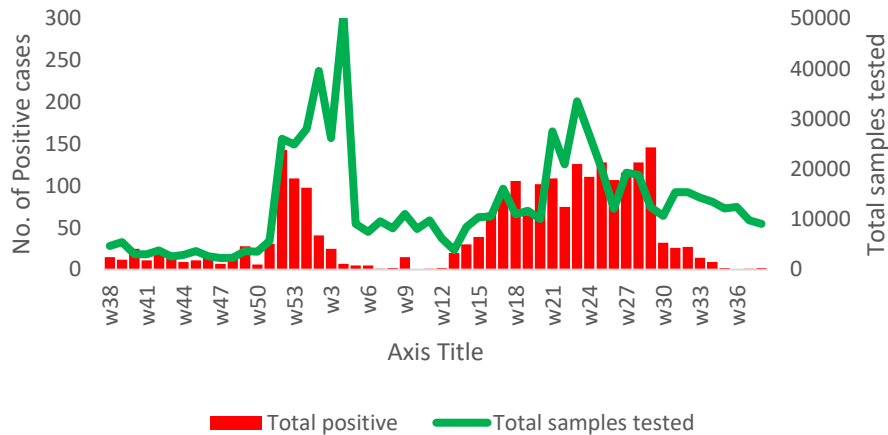
- a) Six SARS-COV-2 cases were detected in September 2021
- b) None of the cases were linked to outbreak, all were imported cases.
- c) The trend of detecting SARS-COV-2 cases was declined to nil since 1<sup>st</sup> of September 2021
- d) With six imported cases the cumulative number of cases detected were 2599 as of 30<sup>th</sup> September.

#### II. Highlights on NEWARS:

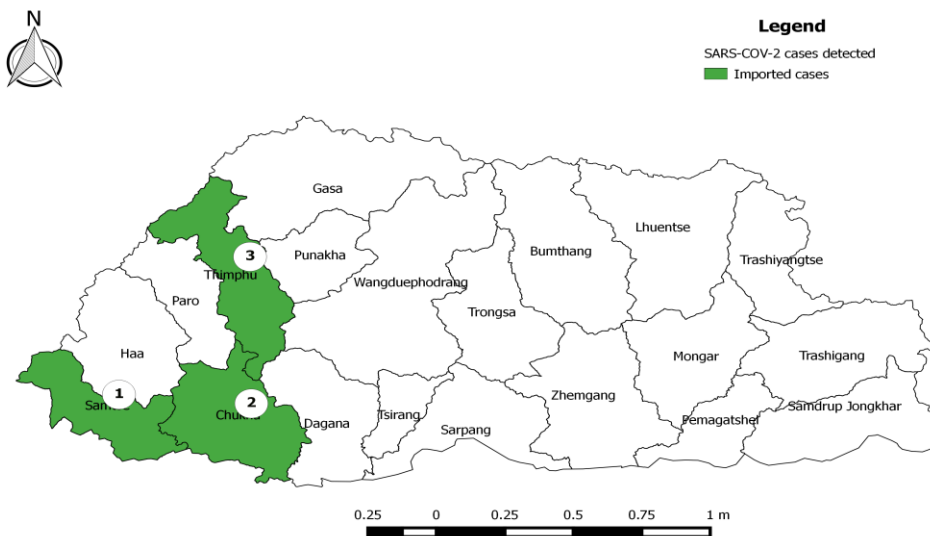
- a) Samples of twenty-three suspected measles cases were tested for measles and rubella, of those one was positive for measles IgM: none were positive rubella IgM.
- b) Two cases of suspected Bacterial meningitis and a case of pertussis was reported from JDWNRH
- c) An outbreak of Typhoid fever was reported from Khatoekha under Chukha lab results for *Salmonella typhi* was negative.

## 2. Situation of COVID-19:

The trend of the SARS-COV-2 cases had declined steadily from July. There were no cases detected from community since last week of August. A total of six imported cases were detected in September 2021 (**Figure 1&2**).



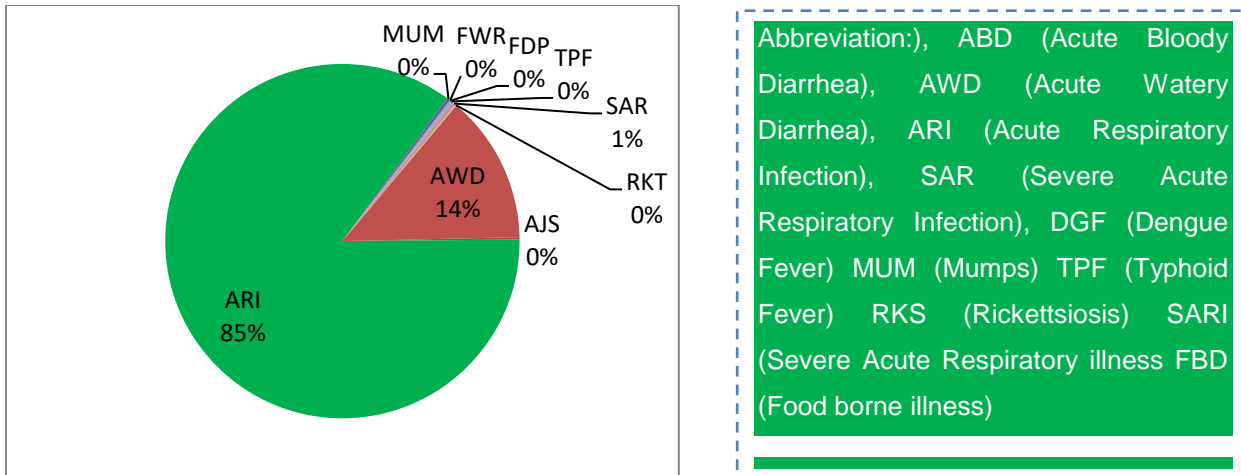
**Figure 1:** No. of samples tested and positive cases of SARS-CoV-2 by week



**Figure 2:** No. of cases detected by dzongkhag

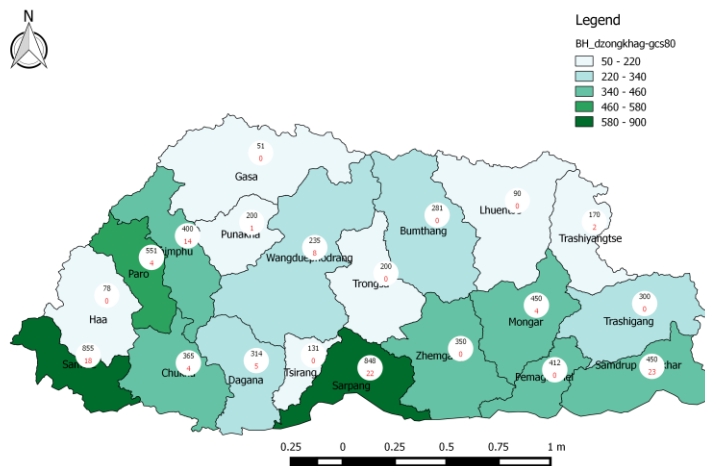
### 3. Status of Notifiable Diseases/Syndromes reported:

Total of 13,940 cases of notifiable diseases were reported in weekly indicator-based surveillance system, among the 11 weekly notifiable diseases ARI (85.0%) followed by AWD (14.0%) topped the list (**Figure 3**).



**Figure 3:** Proportion of notifiable diseases reported in NEWARS

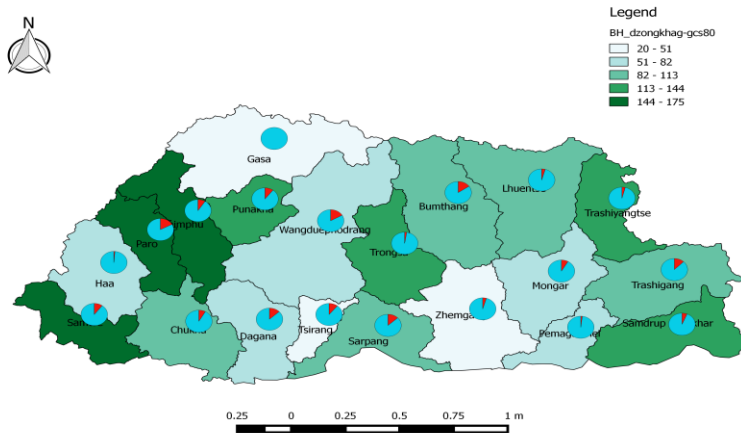
Among dzongkhags, Samtse and Sarpang had reported highest percentage of ARI while Thimphu reported the highest percentage of SARI cases (**Figure 4**):



ARI: Acute Respiratory Illness; SARI: Severe Acute Respiratory Illness

**Figure 4:** Proportion of ARI and SARI reported by 20 Dzongkhags

Samtse Paro and Thimphu dzongkhag reported the highest percentage of AWD, while highest percentage of ABD was reported from Mongar (**Figure 5**).

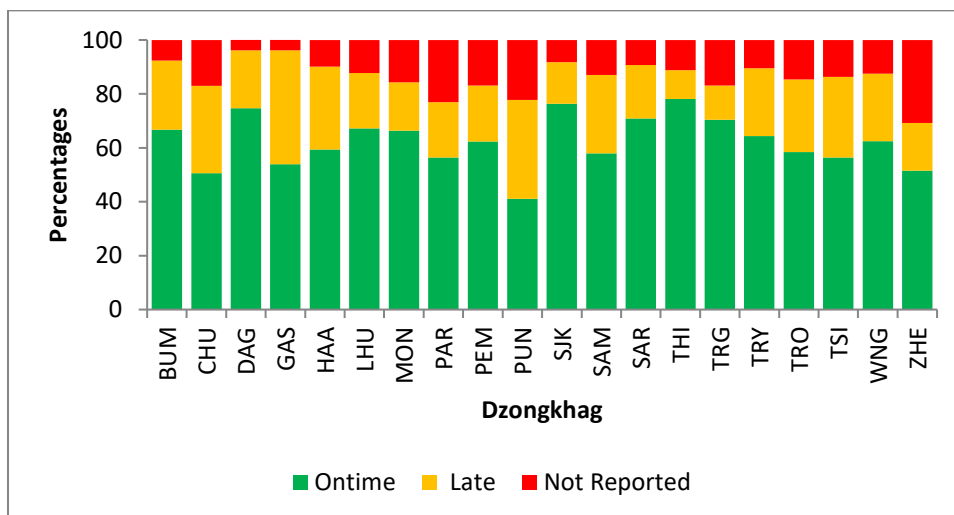


**ABD:** Acute Bloody Diarrhea; **AWD:** Acute Watery Diarrhea

**Figure 5:** Proportion of ABD and AWD reported by 20 Dzongkhags

#### 4. Status of Notifiable Diseases/Syndromes for the month

Of the total weekly report received in the system, 59.0% were reported in time, 21.0% were lately reported, and rest were not reported (**Figure 6**).



**Figure 6:** Reporting status of Notifiable Diseases by Dzongkhags