

MONTHLY DISEASES EPIDEMIOLOGY REPORT

Royal Centre for Disease Control

DoPH, Ministry of Health

Wangchutaba, Serbithang, Thimphu, Bhutan.

Post Box No. 667, Tele: +975-02-350577/78, Fax: +975-2-332464

web: <http://www.rcdc.gov.bt>, E Mail: rcdc.bhutan@gmail.com

September (Epidemiological Weeks 35- 39), 2022

1. Highlights on COVID-19 surveillance and NEWARS reporting

I. Highlights on COVID-19:

- a) Total of 1005 SARS-CoV-2 cases were detected in the month of September 2022
- b) The trend of detecting SARS-COV-2 cases had been increasing compared to the month of August 2022
- c) With 1005 detected cases, the cumulative number have gone to 62,081 at the end of September 2022.

II. Highlights on NEWARS:

- a) Twenty-one dengue fever, three suspected acute encephalitis, one malaria, and one measles pertussis were reported in September 2022
- b) Seven outbreaks (Hand Foot and Mouth Diseases 5, Dengue 1, and Chickenpox 1, was reported during the month. All outbreaks were investigated by the local health centers with the recommendation from RCDC.

2. Situation of COVID-19:

A total of 1005 laboratory-confirmed cases of SARS-CoV-2 have detected in the month of September: the trend of case detection was in line with the previous month (**Figure 1**).

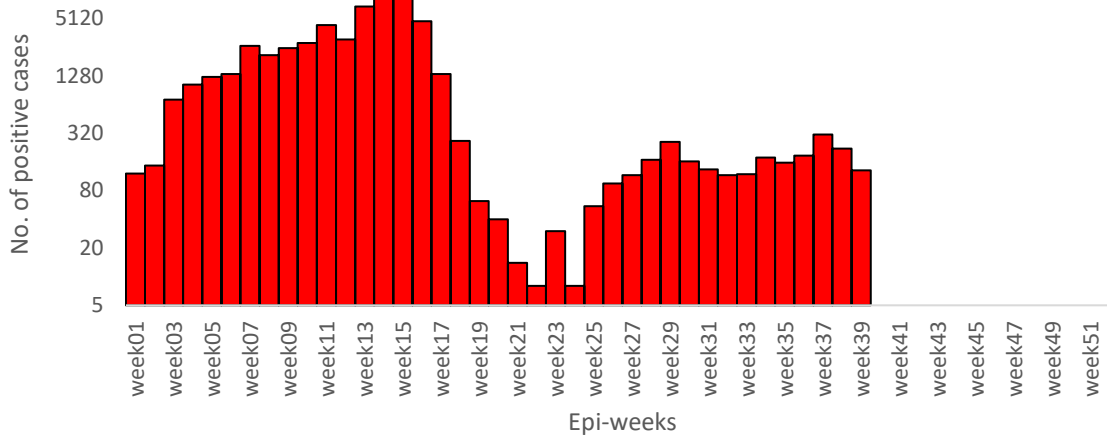


Figure 1: No. of samples tested positive for SARS-CoV-2 by epi-week

3. Status of Notifiable Diseases/Syndromes reported:

A total of 11,820 cases of notifiable diseases were reported in the weekly indicator-based surveillance system, among the 11 weekly notifiable diseases ARI (82.0%) followed by AWD (15.0%) topped the list (**Figure 2**).

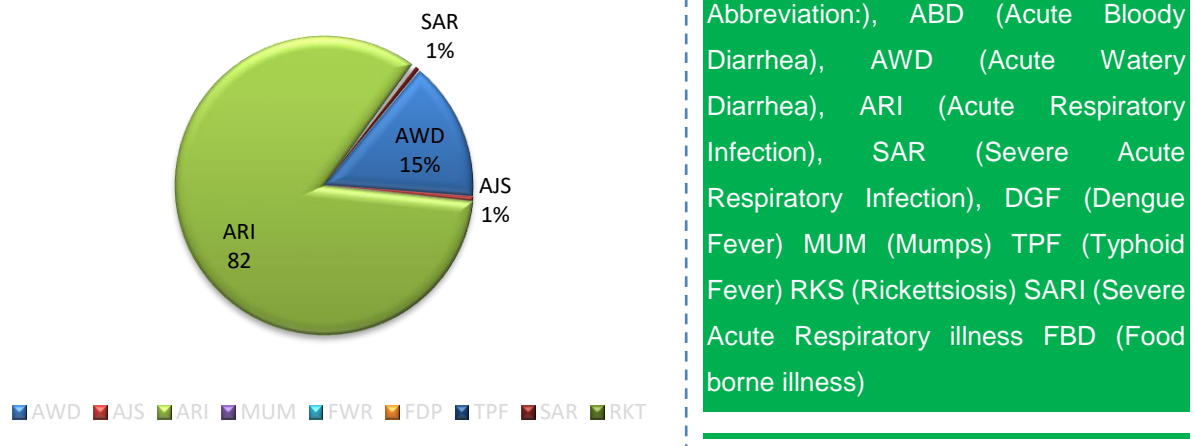
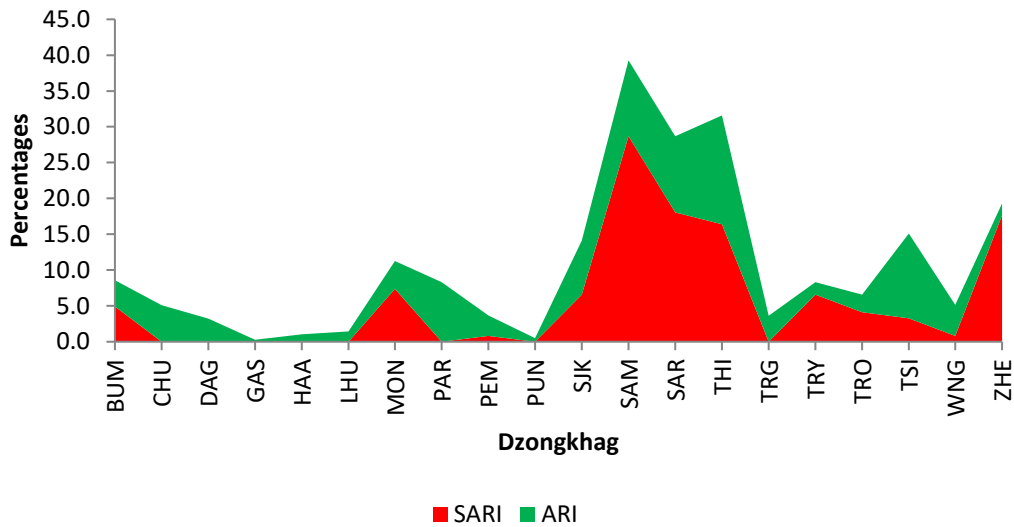


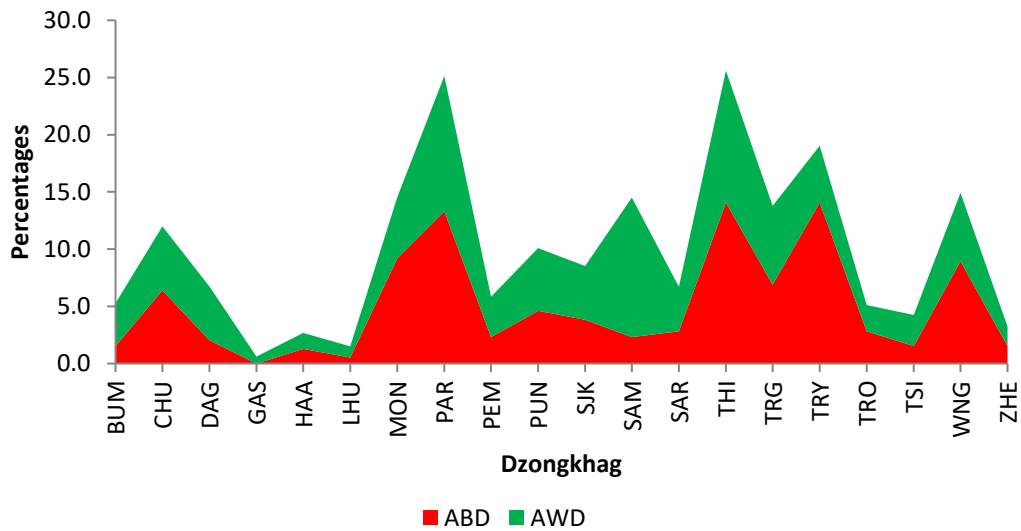
Figure 2: Proportion of notifiable diseases reported in NEWARS

Among dzongkhags, Samtse had reported the highest incidence of ARI and the highest number of SARI cases (**Figure 3**).



ARI: Acute Respiratory Illness; **SARI:** Severe Acute Respiratory Illness

The reported incidence of AWD was higher in Paro and Thimphu dzongkhag, while the highest percentage of ABD was reported from Thimphu and Trashiyangtse (**Figure 4**).



ABD: Acute Bloody Diarrhea; **AWD:** Acute Watery Diarrhea

Figure 4: Proportion of ABD and AWD reported by Dzongkhags

4. Status of Notifiable Diseases/Syndromes for the month

Of the total weekly report received in the system, 68.0% were reported in time, 15.0% were lately reported, and the rest were not reported (**Figure 5**).

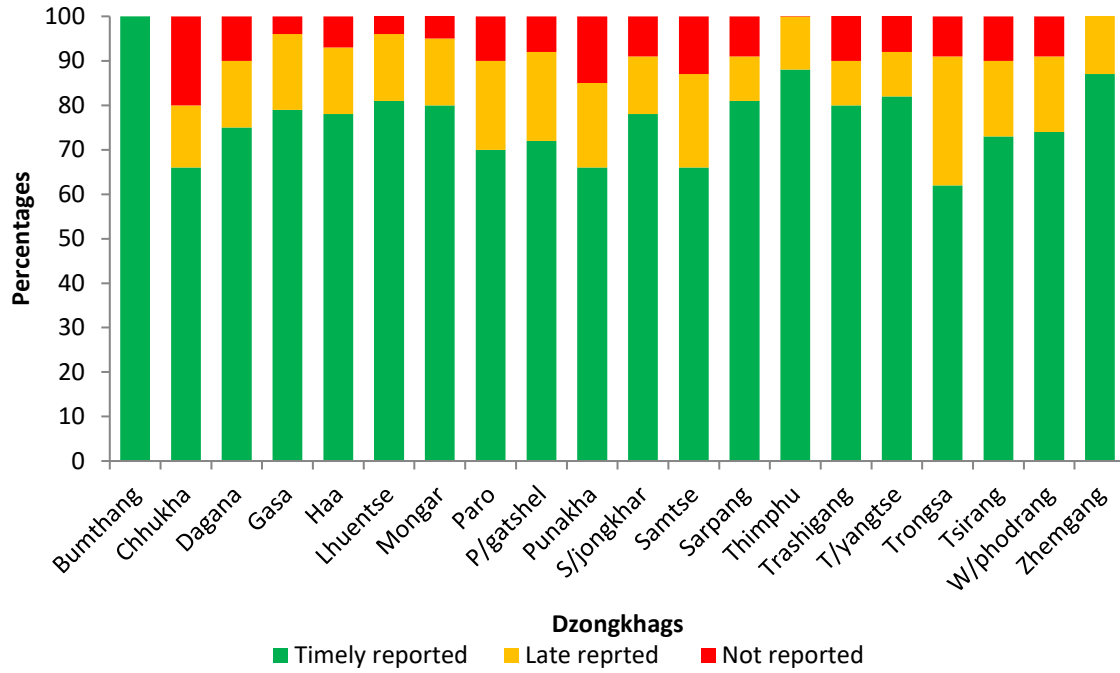


Figure 5: Reporting status of Notifiable Diseases by Dzongkhags