

# COVID-19 INTEGRATED FLU SURVEILLANCE REPORT

## Royal Centre for Disease Control

DoPH, Ministry of Health

Wangchutaba, Serbithang, Thimphu, Bhutan.

Post Box No. 667, Tele: +975-02-350577/78, Fax: +975-2-332464

web: <http://www.rcdc.gov.bt>, E Mail: [rcdc.bhutan@gmail.com](mailto:rcdc.bhutan@gmail.com)

### Weekly COVID-19 Integrated Flu Surveillance Report for week 43 (Oct 24 – 30, 2022)

- A total of 40 COVID-19 cases were detected across the country for the week. Thimphu (19) reported the highest cases followed by Punakha (6) and Samtse (5) (Figure 1). The overall COVID-19 positivity rate was 5.9%, while community was 97.5% (Figure 2).
- A total of 204 ILI and SARI specimens were tested and detected 41 Influenza positives and 5 SARS-CoV-2 positives (Figure 3, 4 & Table 1).
- Flu Outbreaks from two places (Lhamiozingkha & Punakha) were reported during the week, both were Influenza A/H3 (Details will be included in week 44).

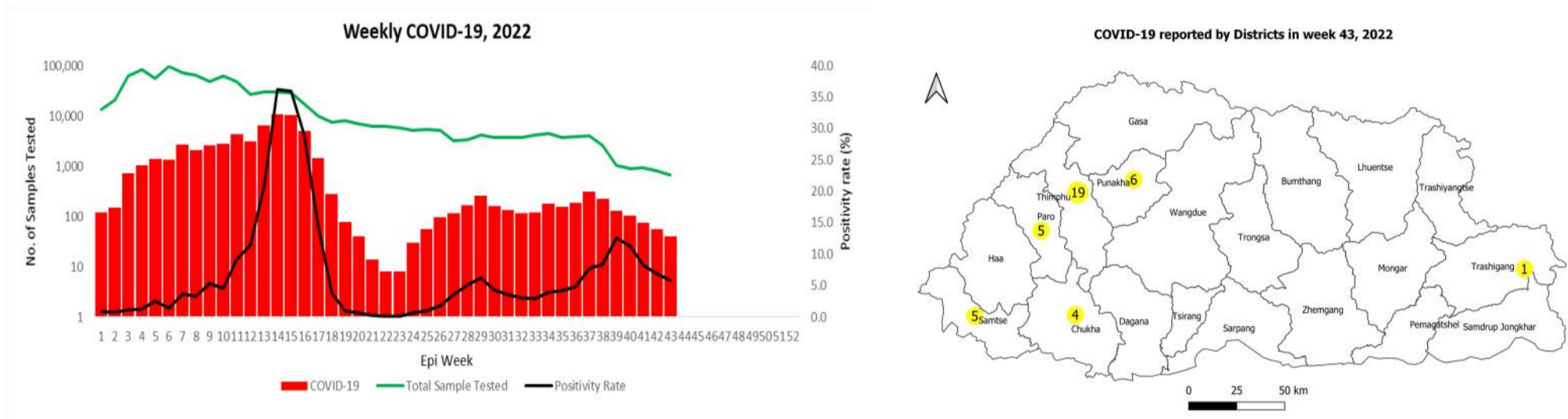


Figure 1: Weekly COVID-19 (SARS-CoV-2) detected from all across the country (Source: HFS and RCDC)

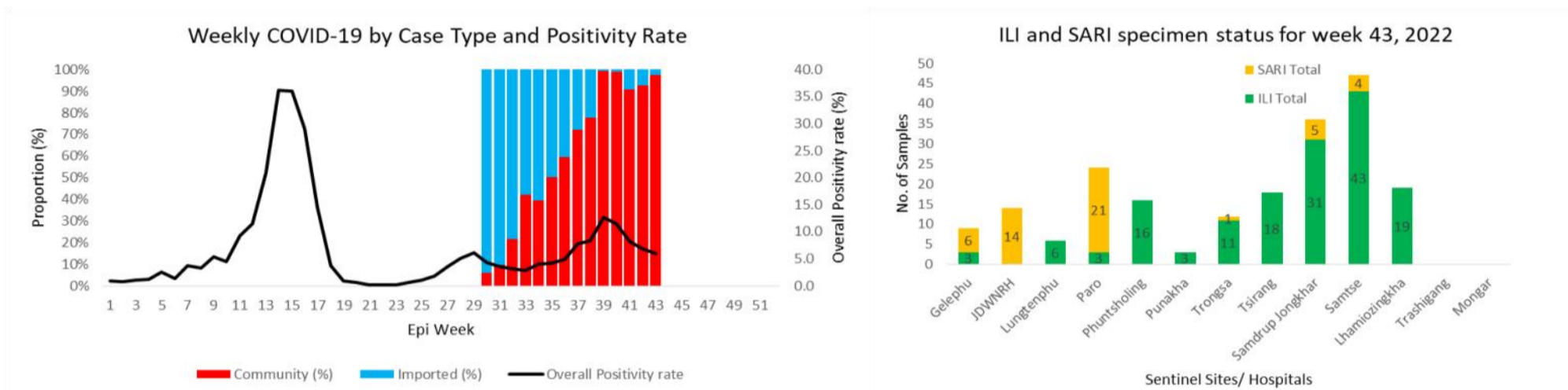


Figure 2: Proportion of COVID-19 by Case type (Source HFS & RCDC)

Figure 3: ILI and SARI Specimen status for week 43, 2022

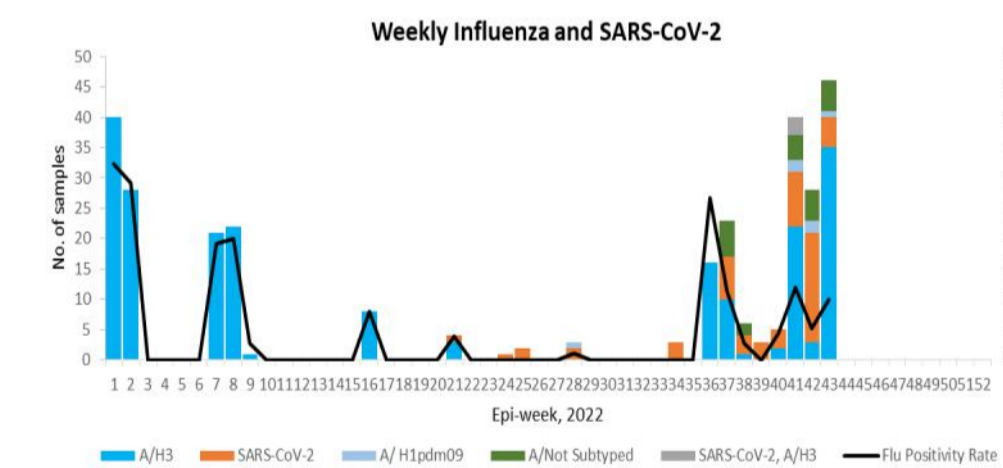


Figure 4: Weekly Influenza subtypes and SARS-CoV-2

Table 1: Influenza subtype and SARS-CoV-2 detected in week 43

| Sentinel Hospitals | ILI          |                     |                |                     | ILI Total  | SARI      |           | SARI Total | Grand Total |
|--------------------|--------------|---------------------|----------------|---------------------|------------|-----------|-----------|------------|-------------|
|                    | FLU COVID-19 | Flu A/ Not Subtyped | Flu A/ H1pdm09 | Flu A/ Not Subtyped |            | Flu A/ H3 |           |            |             |
| Gelephu            |              |                     |                | 1                   | 3          | 1         | 6         | 9          |             |
| JDWNRH             |              |                     |                |                     |            |           | 14        | 14         |             |
| Ilhamoizingkha     | 3            |                     |                |                     | 19         |           |           | 19         |             |
| Lungtenphu         |              | 1                   |                |                     | 6          |           |           | 6          |             |
| Paro               |              | 1                   |                | 1                   | 3          | 1         | 21        | 24         |             |
| Phuntsholing       | 1            |                     | 1              |                     | 16         |           |           | 16         |             |
| Punakha            |              | 1                   |                |                     | 3          |           |           | 3          |             |
| S/Jongkhar         |              |                     |                | 2                   | 31         |           | 5         | 36         |             |
| Samtse             | 1            | 22                  |                |                     | 43         |           | 4         | 47         |             |
| Trongsa            |              |                     |                |                     | 11         |           | 1         | 12         |             |
| Tsirang            |              |                     | 8              |                     | 18         |           |           | 18         |             |
| Monggar ERR        |              |                     |                |                     |            |           |           | 0          |             |
| Trashigang         |              |                     |                |                     |            |           |           | 0          |             |
| <b>Grand Total</b> | <b>5</b>     | <b>33</b>           | <b>4</b>       | <b>1</b>            | <b>153</b> | <b>1</b>  | <b>51</b> | <b>204</b> |             |

Table 2: ILI and SARI cases reporting status for week 43, 2022

| Sl. No. | Sentinel Sites            | Week | SARI         | IPD        | Sentinel Sites            | Week | ILI          | OPD         |
|---------|---------------------------|------|--------------|------------|---------------------------|------|--------------|-------------|
| 1       | Phuentsholing Hospital    | 43   | 5            | 41         | Paro Hospital             | 43   | 53           | 2682        |
| 2       | Monggar ERRH              | 43   | 1            | 14         | Punakha Hospital          | 43   | 12           | 1119        |
| 3       | Paro Hospital             | 43   | 5            | 50         | Samdrup Jongkhar Hospital | 43   | 39           | 597         |
| 4       | Punakha Hospital          | 43   | 1            | 39         | Trashigang Hospital       | 43   | 9            | 795         |
| 5       | Samtse Hospital           | 43   | 0            | 96         | Trongsa Hospital          | 43   | 55           | 466         |
| 6       | Gelephu CRRH              | 43   | 0            | 23         | Tsirang Hospital          | 43   | 13           | 1012        |
| 7       | JDWNRH                    | 43   | 6            | 386        | Samtse Hospital           | 43   | Not Reported |             |
| 8       | Trashigang Hospital       | 43   | 0            | 35         | <b>Total</b>              |      | <b>181</b>   | <b>6671</b> |
| 9       | Trongsa Hospital          | 43   | 1            | 6          |                           |      |              |             |
| 10      | Tsirang Hospital          | 43   | Not Reported |            |                           |      |              |             |
| 11      | Samdrup Jongkhar Hospital | 43   | Not Reported |            |                           |      |              |             |
|         | <b>Total</b>              |      | <b>19</b>    | <b>690</b> |                           |      |              |             |

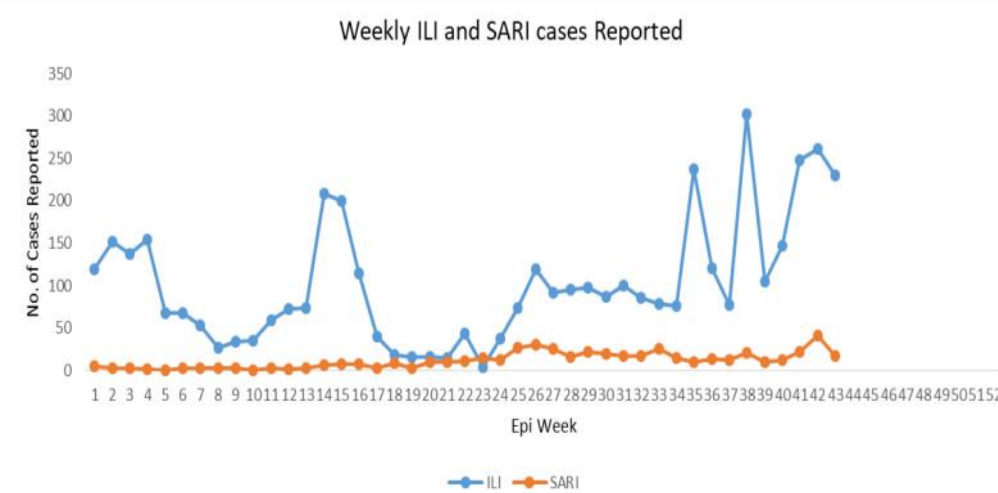


Figure 5: Weekly trend of ILI and SARI case reported by Sentinel Hospitals