

# MONTHLY DISEASES EPIDEMIOLOGY REPORT

## Royal Centre for Disease Control

DoPH, Ministry of Health

Wangchutaba, Serbithang, Thimphu, Bhutan.

Post Box No. 667, Tele: +975-02-350577/78, Fax: +975-2-332464

web: <http://www.rcdc.gov.bt>, E Mail: [rcdc.bhutan@gmail.com](mailto:rcdc.bhutan@gmail.com)



February (Epidemiological Weeks 5- 8), 2023

### 1. Highlights on COVID-19 surveillance and NEWARS reporting

#### I. Highlights on COVID-19:

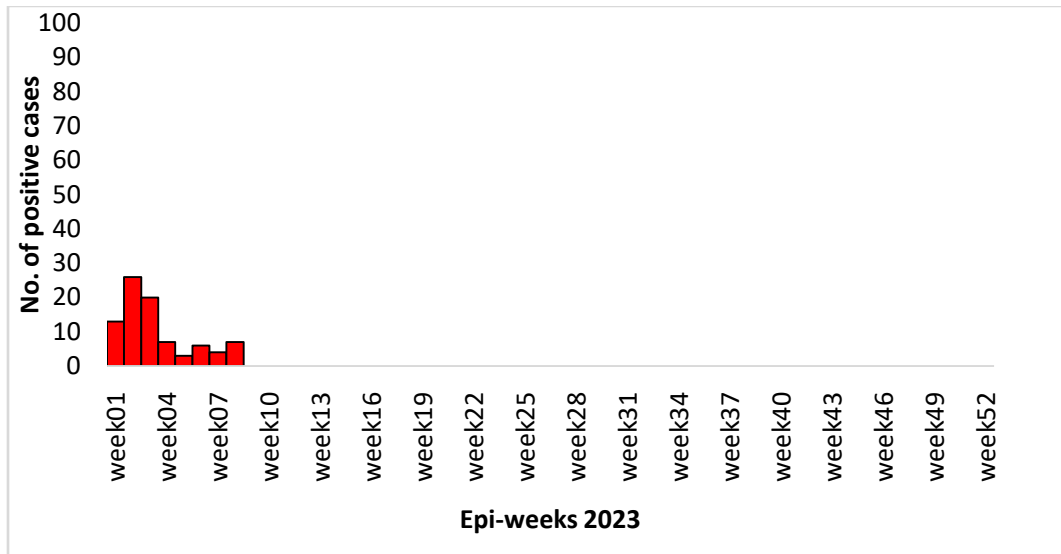
- a) Total of 20 (antigen 13 and PCR 7) SARS-CoV-2 positive cases were detected in the month of February 2023
- b) The trend of SARS-COV-2 cases had been decline steadily
- c) The cumulative number of positive cases has gone to 62,673 at the end of February 2023.

#### II. Highlights on NEWARS:

- a) Three dengue fever reported from and two suspected measles cases was reported from JDWNRH, in February 2023
- b) An outbreak of chickenpox was reported from Punakha Hospital

## 2. Situation of COVID-19:

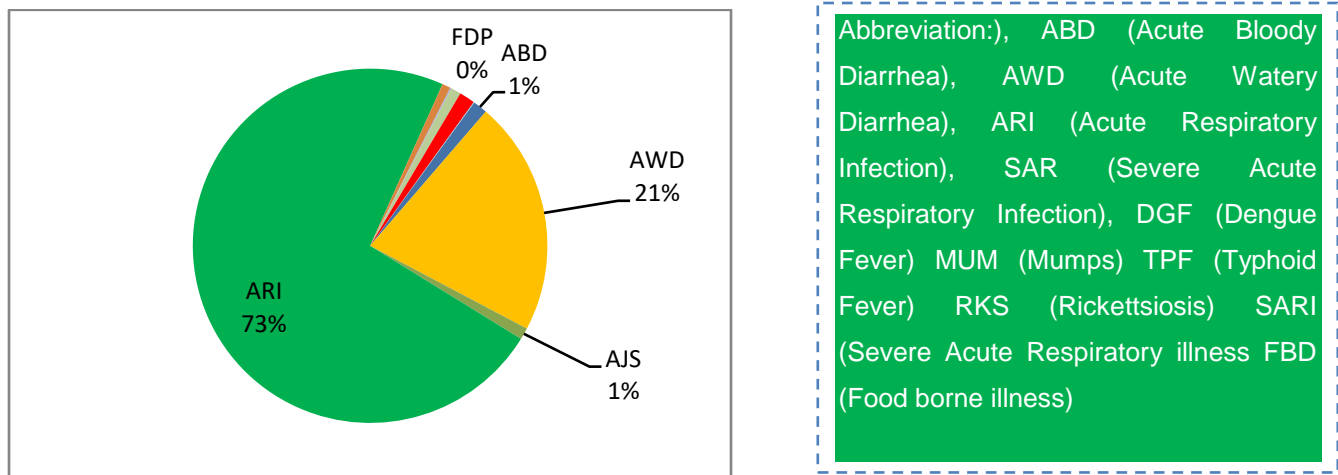
A total of 20 laboratory-confirmed cases of SARS-CoV-2 have detected in the month, the trend of SARS-CoV-2 cases detection had been declining steadily in 2023 (**Figure 1**).



**Figure 1:** No. of samples tested positive for SARS-CoV-2 by epi-week, 2023

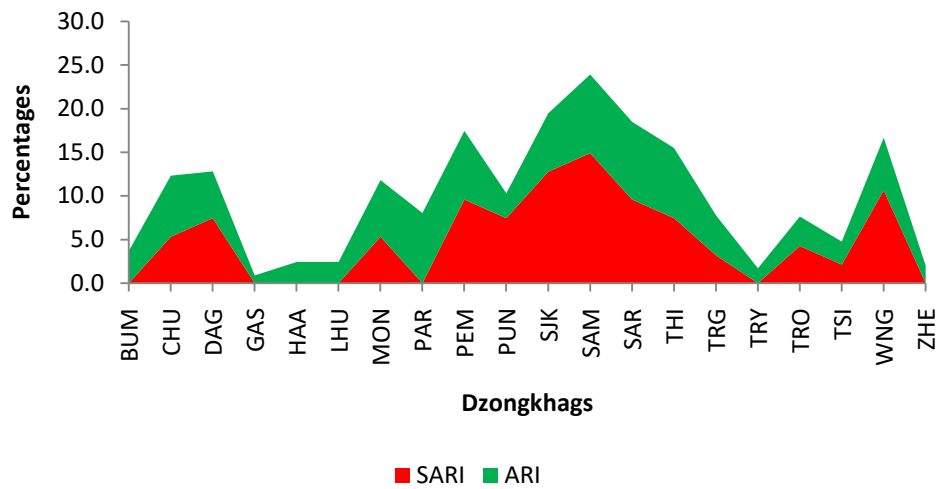
## 3. Status of Notifiable Diseases/Syndromes reported:

A total of 10341 cases of notifiable diseases were reported in the weekly indicator-based surveillance system, among the 11 weekly notifiable diseases Acute Respiratory Illness (ARI) (73.0%) followed by Acute Watery Diarrhea (AWD) (21.0%) topped the list (**Figure 2**).



**Figure 2:** Proportion of notifiable diseases reported in NEWARS

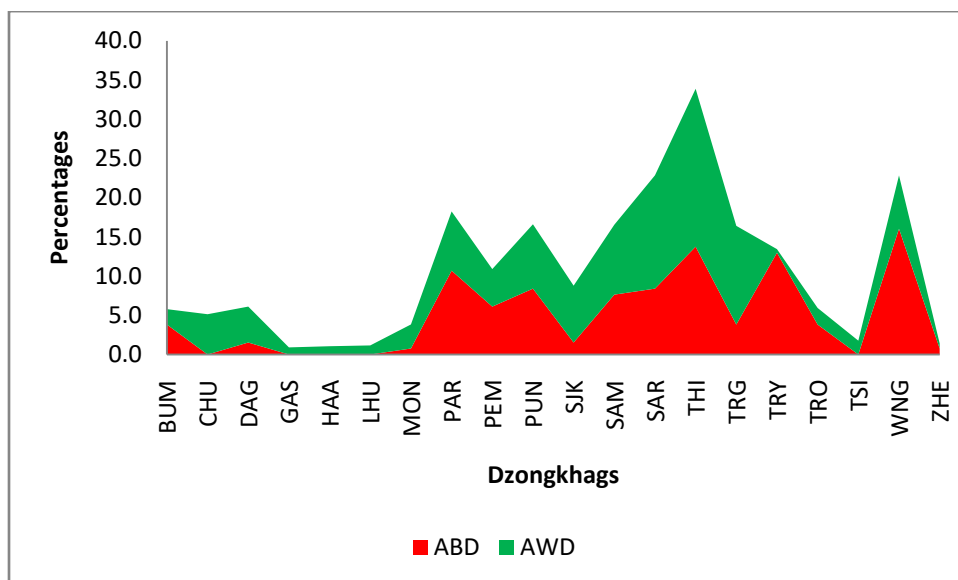
Among the dzongkhags, Sarpang and Samtse had reported a higher percentage of ARI while Sarpang reported a higher percentage of SARI cases (**Figure 3**):



**Figure 3:** Proportion of ARI and SARI reported by Dzongkhags

**ARI:** Acute Respiratory Illness; **SARI:** Severe Acute Respiratory Illness

The higher incidence of AWD was reported by Sarpang dzongkhag, while the highest percentage of ABD was reported by Thimphu dzongkhag (**Figure 4**).

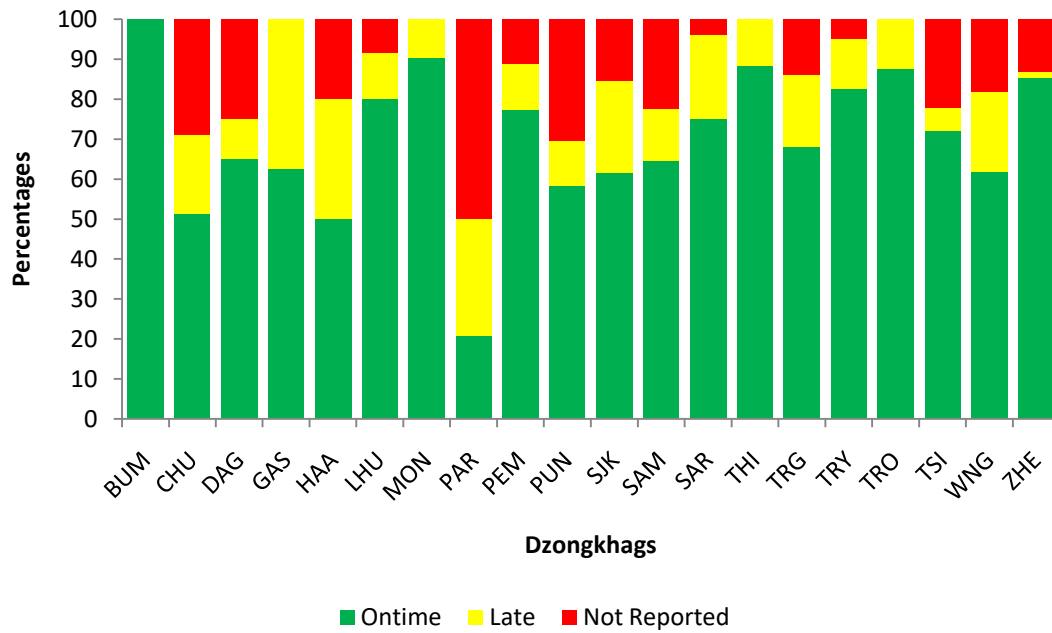


**ABD:** Acute Bloody Diarrhea; **AWD:** Acute Watery Diarrhea

**Figure 4:** Proportion of ABD and AWD reported by Dzongkhags

#### 4. Status of Notifiable Diseases/Syndromes for the month

Of the total weekly report received in the system, 74.0% were reported in time, 14.0% were lately reported, and the rest were not reported (**Figure 5**).



**Figure 5:** Reporting status of Notifiable Diseases by Dzongkhags