

Weekly Report of COVID-19 Integrated ILI and SARI Surveillance

Royal Centre for Disease Control

Ministry of Health

Wangchutaba, Serbithang, Thimphu, Bhutan.

Post Box No. 667, Tele: +975-02-350577/78

Website: www.rcdc.gov.bt, Email: rcdc@health.gov.bt

Weekly COVID-19 Integrated Flu Surveillance Report for week 26 (Jun 26 — Jul 2, 2023)

- A total of 39 ILI and SARI specimens were tested by Multiplex PCR and detected 2 (5.1%) Influenza positives and 2 (5.1%) SARS-CoV-2 positives (Figure 1). The affected age group for Influenza was <5 years, and 40–49 years (50% each), while the affected age group for SARS-CoV-2 was <5 years and 5–9 years (50% each) (Figure 2).
- All ILI Sentinel sites have reported, however, few SARI sites have not reported for the week (Figure 5, Table 2).

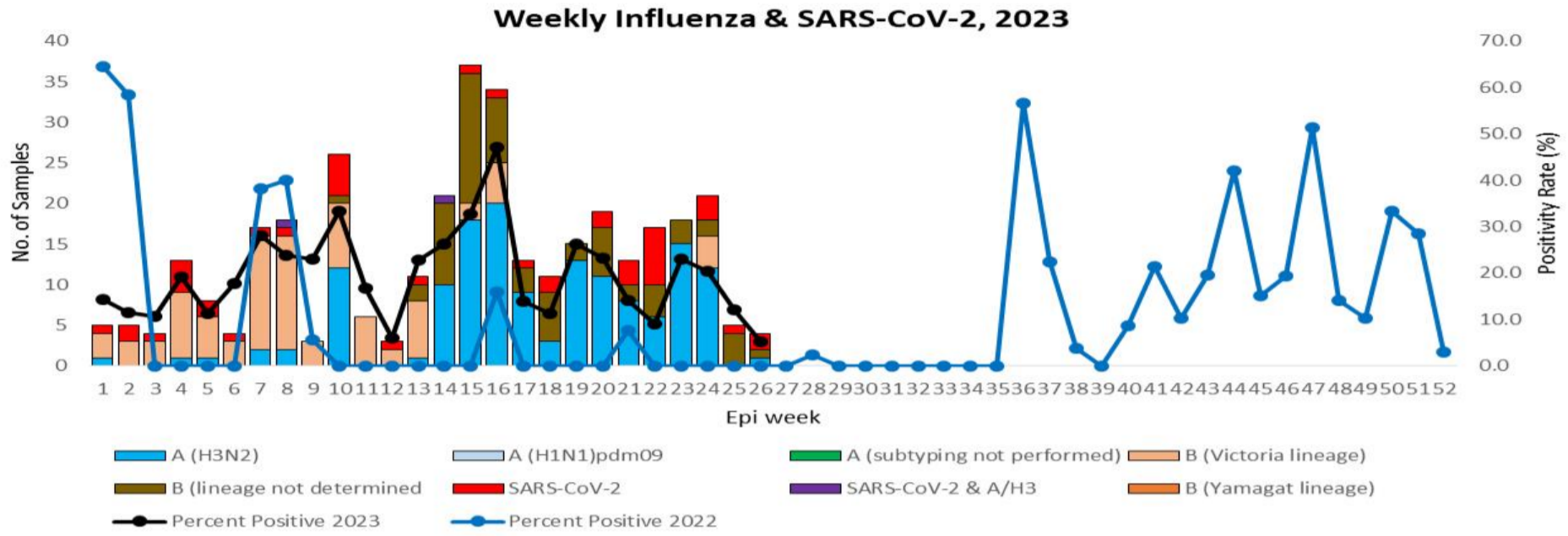


Figure 1: Weekly Influenza subtypes and SARS-CoV-2 through Sentinel Surveillance

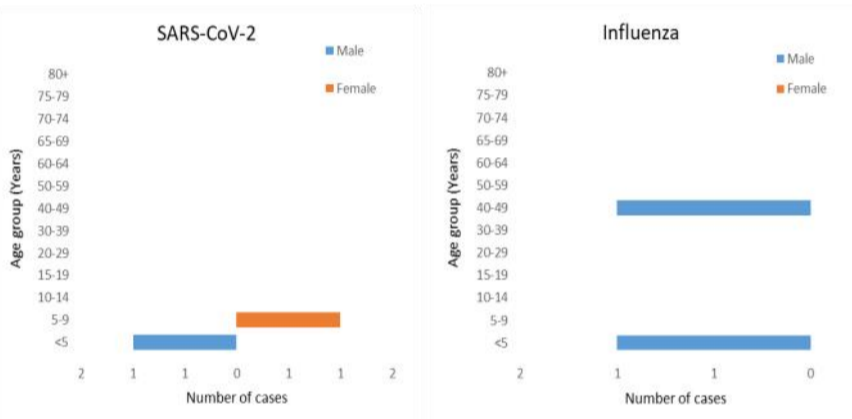


Figure 2: Influenza Positives by age group and gender

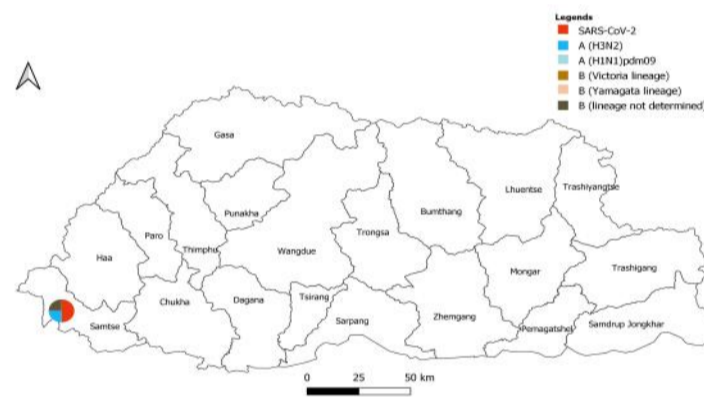


Figure 3: Percentage of SARS-CoV-2 and Influenza subtypes

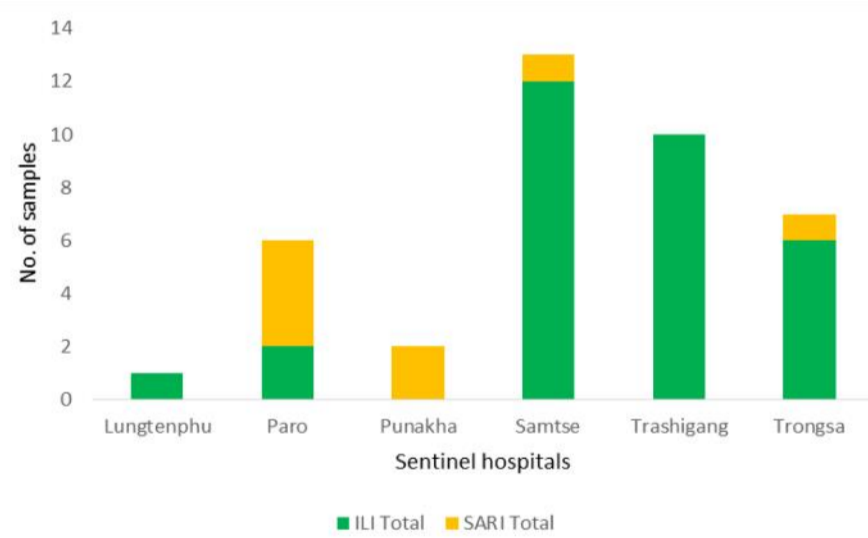


Figure 4: ILI and SARI Specimens status for Testing week 26, 2023

Table 1: Influenza subtypes and COVID-19 in Testing week 26, 2023

Sentinel Hospitals	ILI			SARI		Grand Total
	A (H3N2)	B (lineage not determined)	SARS-CoV-2	ILI Total	SARI Total	
Lungtenphu			1	1		1
Paro			2	2	4	6
Punakha					2	2
Samtse	1	1	8	12	1	13
Trashigang			10	10		10
Trongsa			6	6	1	7
Grand Total	1	1	27	31	8	39

Table 2: ILI and SARI cases reporting status for week 26, 2023

Year	Week	Site	Department	SARI	IPD	Year	Week	Site	ILI	OPD
2023	26	Gelephu CRRH	Pediatric Ward	0	4	2023	26	Paro Hospital	71	3134
2023	26	Gelephu CRRH	ICU	0	3	2023	26	Punakha Hospital	0	980
2023	26	Gelephu CRRH	Medical Ward	Not Reported		2023	26	Samdrup Jongkhar Hospital	22	566
2023	26	JDWNRH	Pediatric Ward	1	38	2023	26	Samtse Hospital	20	1220
2023	26	JDWNRH	Medical Extension Ward	Not Reported		2023	26	Trashigang Hospital	10	650
2023	26	JDWNRH	Pediatric ICU	0	4	2023	26	Trongsa Hospital	17	345
2023	26	JDWNRH	Cabin	Not Reported		2023	26	Tsirang Hospital	15	1037
2023	26	JDWNRH	Medical Ward	Not Reported				Total	155	7932
2023	26	JDWNRH	ICU	0	10					
2023	26	JDWNRH	Emergency	Not Reported						
2023	26	Monggar ERRH	ICU	0	2					
2023	26	Monggar ERRH	Medical Ward	0	7					
2023	26	Monggar ERRH	Pediatric Ward	0	5					
2023	26	Paro Hospital	General Ward	4	13					
2023	26	Phuentsholing Hospital	Medical Ward	5	26					
2023	26	Punakha Hospital	General Ward	7	35					
2023	26	Samdrup Jongkhar Hospital	General Ward	0	6					
2023	26	Samtse Hospital	General Ward	0	16					
2023	26	Trashigang Hospital	General Ward	Not Reported						
2023	26	Trongsa Hospital	General Ward	1	10					
2023	26	Tsirang Hospital	General Ward	0	33					
		Total		18	212					

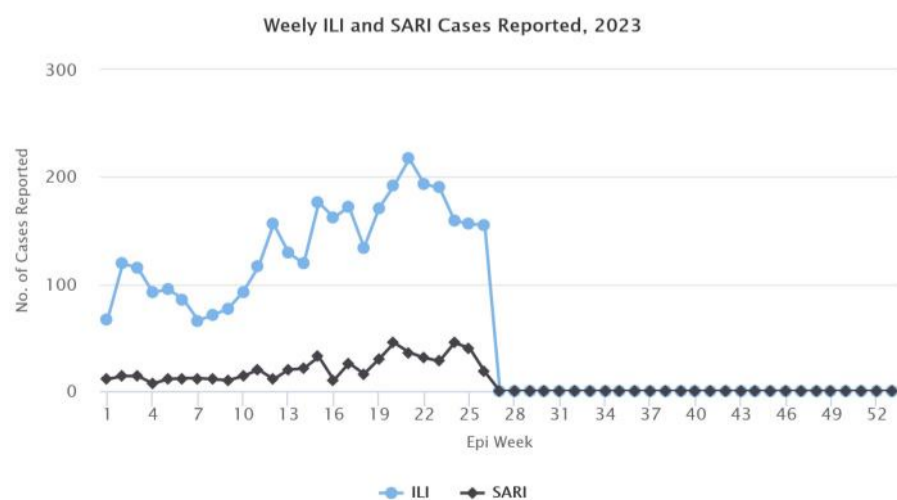


Figure 5: Weekly trend of ILI and SARI cases reported by Sentinel Hospitals