

MONTHLY DISEASES EPIDEMIOLOGY REPORT

Royal Centre for Disease Control

DoPH, Ministry of Health

Wangchutaba, Serbithang, Thimphu, Bhutan.

Post Box No. 667, Tele: +975-02-350577/78, Fax: +975-2-332464

web: <http://www.rcdc.gov.bt>, E Mail: rcdc.bhutan@gmail.com



June (Epidemiological Weeks 22-25), 2023

1. Highlights on NEWARS reporting

Immediate and Events reports:

- a) Two cases of suspected bacterial meningitis were reported from JDWNRH
- b) Total of 63 samples of suspected Measles/Rubella cases were tested of which one sample was tested positive for measles IgM and two samples tested positive for Rubella IgM.
- c) Two malaria, one imported case was reported from JDWNRH and another one was reported from Samdrupjongkhar.
- d) Two case of Dengue fever cases was reported one from Punakha Hospital and another from Sarpang Hospital.
- e) Three suspected case of Cholera was reported from Tashicholing Hospital Samtse: laboratory test confirmed negative for *Vibrio Cholerae*.
- f) A case of Rabies was reported from CRRH, Gelephu and a suspected case of Anthrax was reported from Wangduephodrang Hospital
- g) Six disease Outbreaks (Influenza-like Illness from Nagor, Mongar (1) Chickenpox from Kanglung, Trashigang (1) and Damji, Gasa (1) Foodborne illness from Zhemgang and Conjunctivitis from Gomtu Samtse (1) were reported during the month.

2. Status of Notifiable Diseases/Syndromes reported:

A total of 22823 cases of notifiable diseases were reported in the weekly indicator-based surveillance system, among the 11 weekly notifiable diseases, Acute Respiratory Infection (ARI) (84.0%) followed by Acute Watery Diarrhea (AWD) (11.0%) topped the list (**Figure 1**).

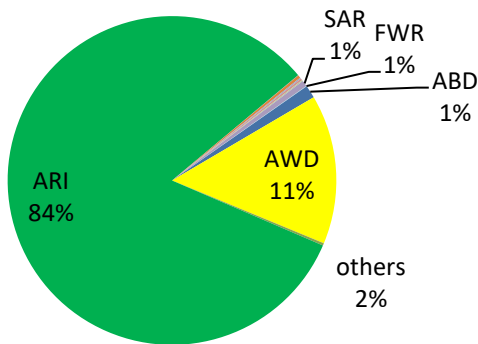


Figure 1: Proportion of notifiable diseases reported in NEWARS

Among dzongkhags, Thimphu, and Sarpang had reported the highest percentage of ARI and SARI cases (**Figure 2**)

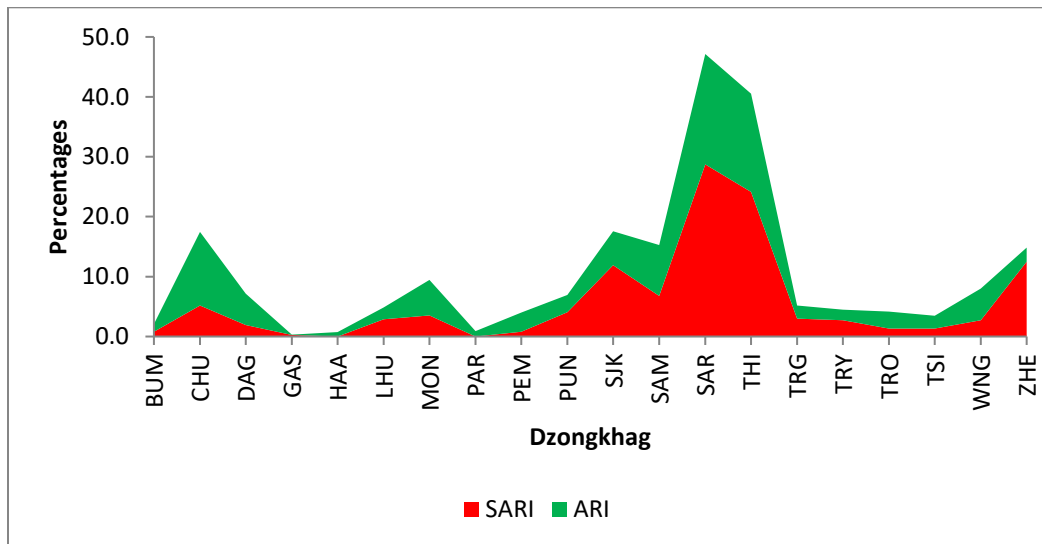


Figure 2: Proportion of ARI and SARI reported by Dzongkhags

Thimphu and Chhukha dzongkhag reported the highest percentage of AWD, while the highest percentage of ABD was reported from Chhukha and Trashigang (**Figure 3**).

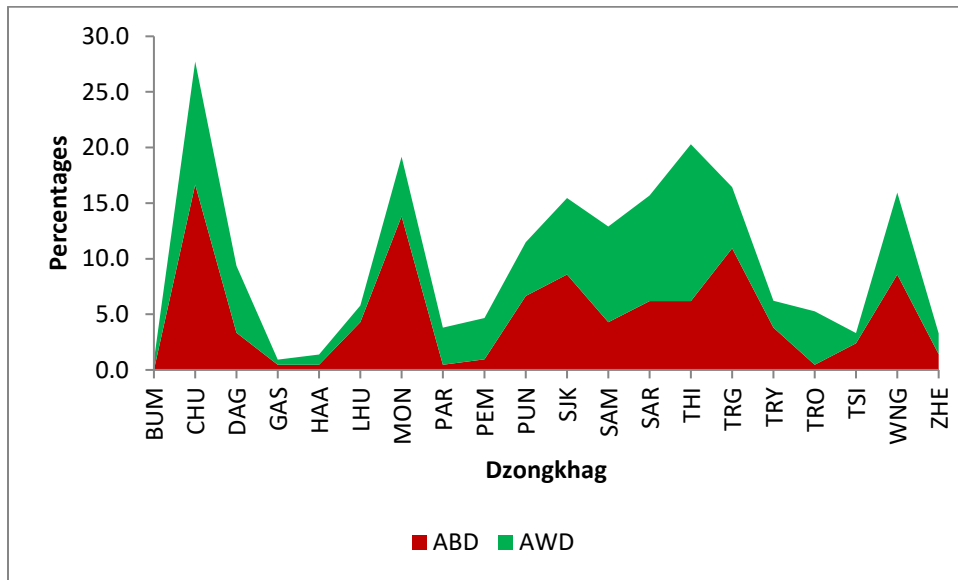


Figure 3: Proportion of ABD and AWD reported by Dzongkhag

3. Status of Notifiable Diseases/Syndromes for the month

Of the total weekly report received in the system, 87.0% were reported in time, 8.0% were lately reported, and the rest (5.0%) of weekly reports were not received (**Figure 4**).

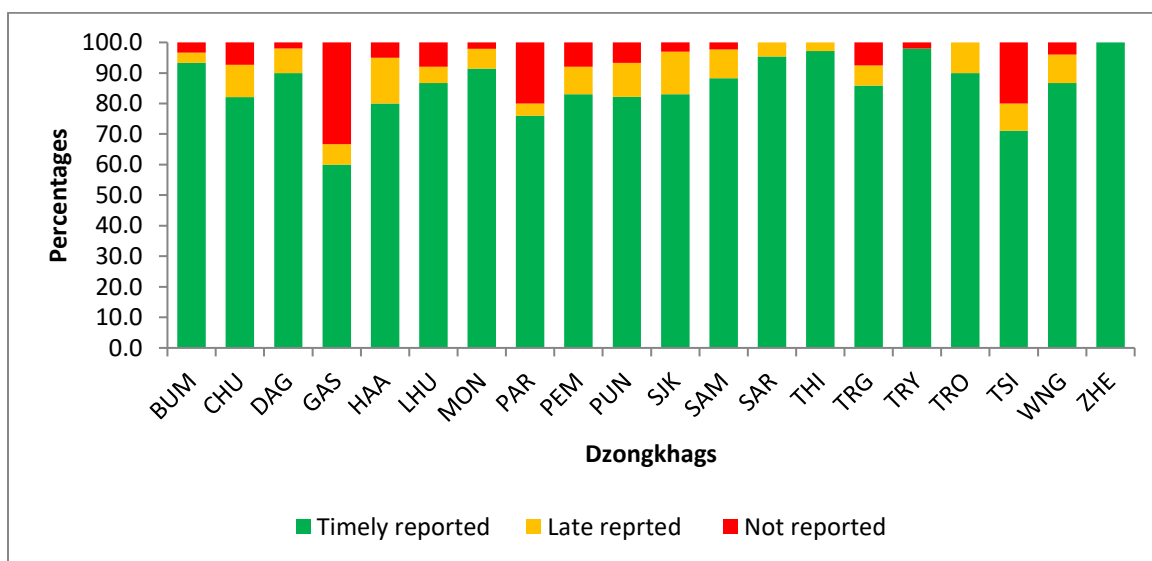


Figure 4: Reporting status of Notifiable Diseases by Dzongkhags