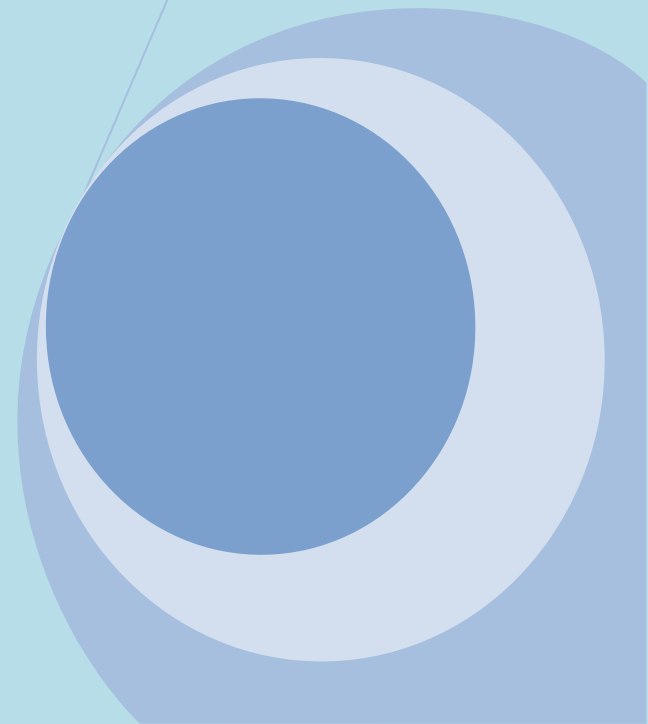




Annual Drinking Water Quality Report, 2018

**National Water Reference Laboratory, Royal Center for Disease
Control, Ministry of Health**



Contents

1. Background	3
2. Urban Drinking Water Quality Monitoring System.....	3
2.1. Parameters for Urban Health Centers	3
2.2. Monitoring Frequency	3
2.3. Report	3
2.3.1. Bacteriology (Thermotolerant coliform).....	3
2.3.2. Physio-Chemical report.....	5
3. Rural Drinking Water Quality Monitoring (RDWQM)	6
3.1. Overall status:	6
3.2. Report	6
Annex 1: Monthly water quality from various sampling points of urban health centers.....	10
Annex 2: Detailed monthly turbidity report from various sampling points of urban health centers.....	19
Annex 2: Detailed monthly pH report from various sampling points of urban health centers	27

1. Background

Access to safe drinking-water is essential to health, a basic human right and a component of effective policy for health protection¹. Drinking water quality monitoring is one of the most important activities to assess and assure safe drinking water to the consumer. The Water Act of Bhutan 2011 has mandated Ministry of Health to monitor drinking water quality in the country. Further, Bhutan Drinking Water Quality Standard, 2016 has entrusted the Royal Centre for Disease Control (RCDC) under Ministry of Health to be the lead institute to manage drinking water quality in the country.

The Royal Center for Disease Control has established Drinking Water Quality Surveillance System and has trained health staffs from 20 dzongkhags to carry out drinking water quality surveillance in the both the urban and the rural areas. Currently there are 34 urban water surveillance centers and 274 rural water surveillance centres.

Bhutan Drinking Water Quality Standard, 2016 instructs Royal Center for Disease Control to produce an annual report on national drinking water quality and submit to the National Environment Commission. This report includes the annual drinking water quality for both the urban and the rural areas for the year 2018.

2. Urban Drinking Water Quality Monitoring System

2.1. Parameters for Urban Health Centers

- ✓ Thermotolerant Coliform
- ✓ Turbidity
- ✓ pH
- ✓ Residual Chlorine (Wherever chlorination is carried out for disinfection)
- ✓ Color
- ✓ Odor

For chemicals and heavy metal analysis, samples will be shipped to RCDC annually for analysis (Currently not carried out as the equipment for heavy metal analysis is under process of procurement)

2.2. Monitoring Frequency

The monitoring is carried out once a month and reporting is made through Water Quality Monitoring Information System (WQMIS) every month.

2.3. Report

2.3.1. Bacteriology (Thermotolerant coliform)

A total of 2436 samples were collected and tested for Thermotolerant coliform from 34 urban health centers in the country for routine water quality surveillance. Out of which 56.6% of the samples were found to be safe (0 CFU) and rest were found to be unsafe (>1CFU Thermotolerant Coliform).

¹ WHO Guidelines for Drinking-water Quality 4th edition

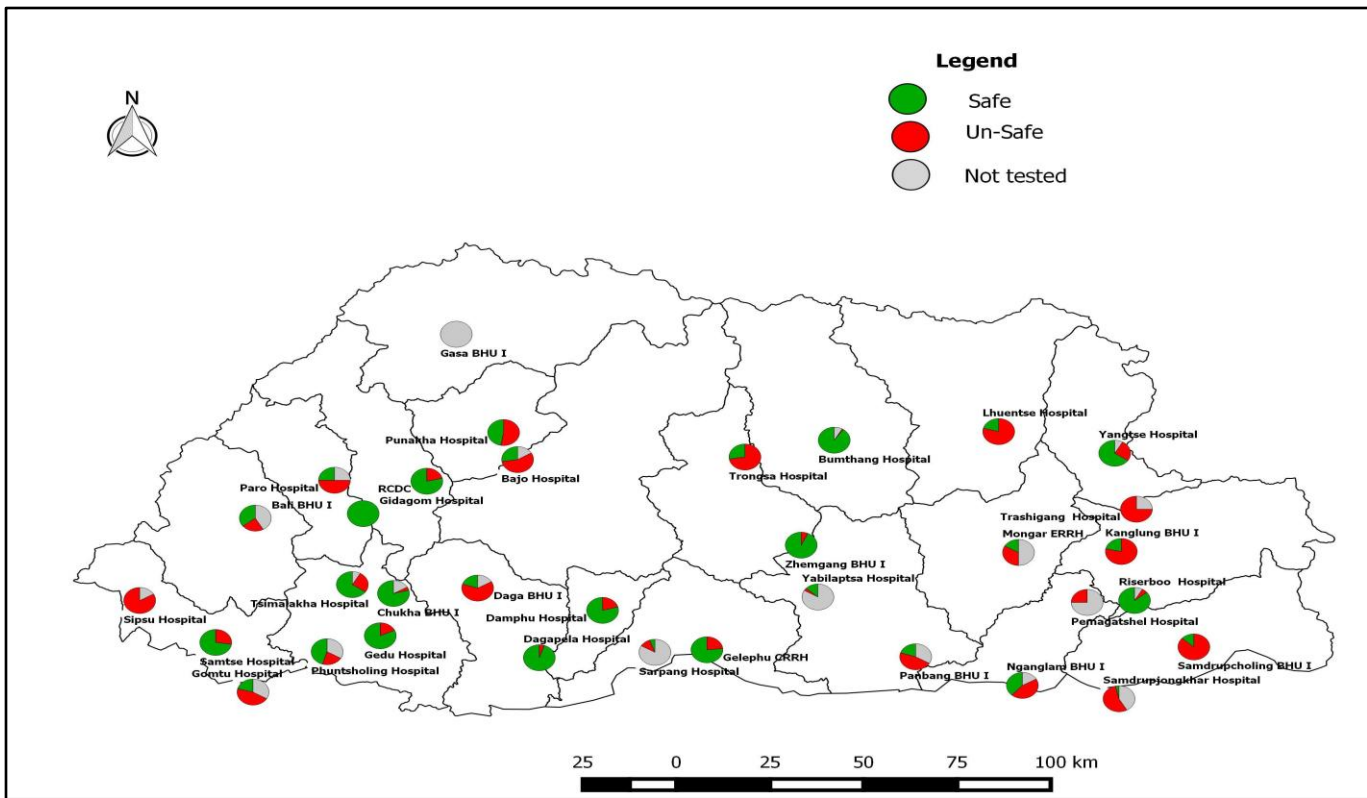


Figure 1: Bacteriology test report of 34 hospitals/BHU-1 in urban area

The annual report by sentinel sites explains that most of the samples (86.7%) from Samdrupcholing BHU Idzongkhag was found unsafe in most of the season that was followed by reports from Trashiyangtse and sibsoo BHU I (83.3%). The drinking water quality from some of the sampling points were found consistently grossly polluted (Annex 1).

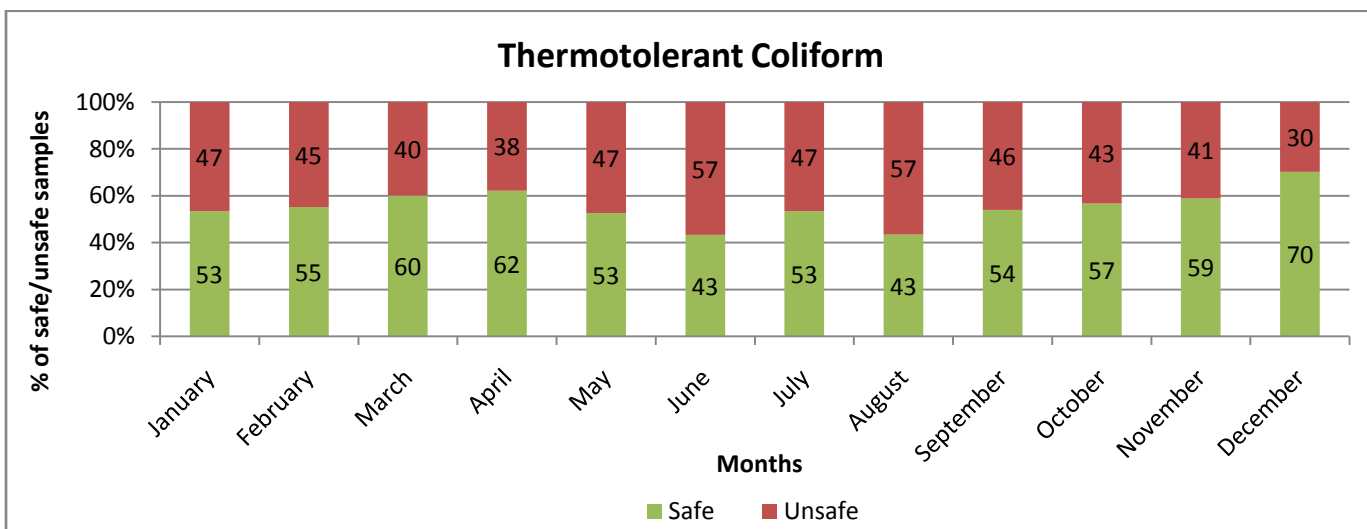


Figure 2: Seasonal variation of water quality (Based on Thermotolerant coliform report)

The annual monthly graph for Thermotolerant coliform indicates that the total number of safe water is usually higher during dry seasons. Maximum unsafe was observed during rainy season indicating

water quality has deteriorated during rainy season. The detailed seasonal variation of water quality is given in ANNEX

2.3.2. Physio-Chemical report

a. Turbidity

For the year 2018, a total of 2365 samples were collected and tested turbidity from 34 urban health centers for routine water quality surveillance. Out of which 78.2% of the samples were found within acceptable limit (<5NTU). The Fig 3 indicates the seasonal variation of turbidity in drinking water samples. There is gradual increase in the number of unsafe water in rainy seasons (June, July and August). The detailed seasonal variation of turbidity is given in ANNEX 2

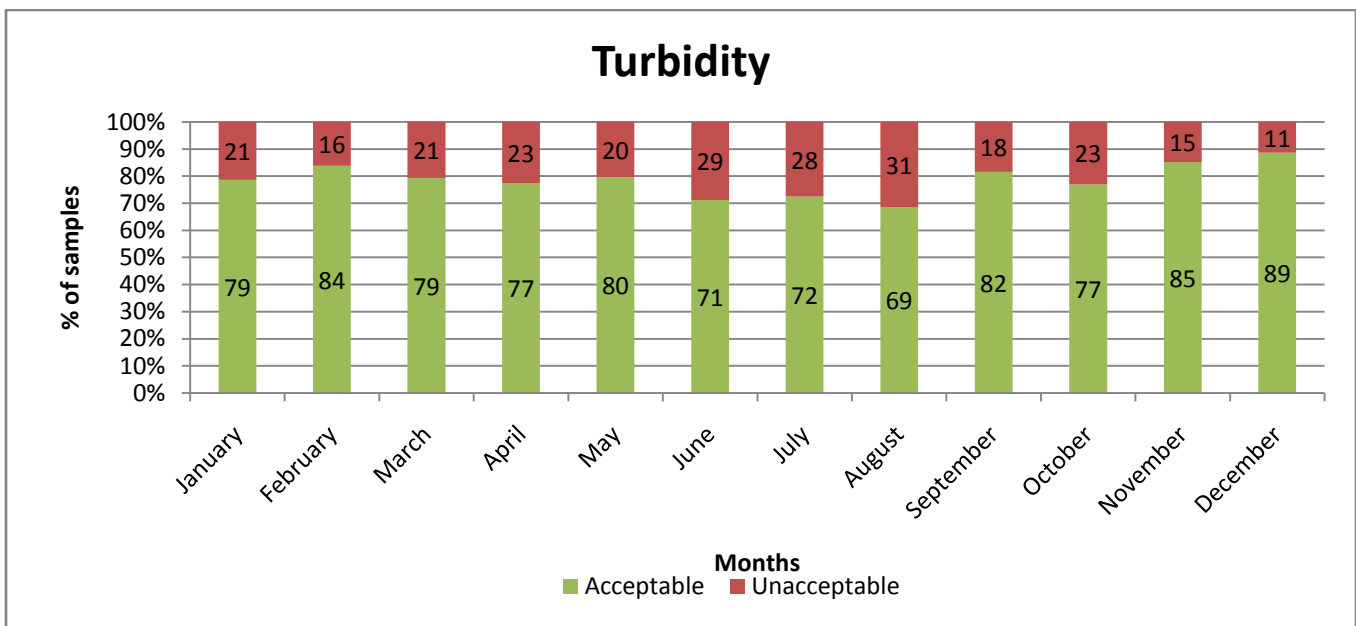


Figure 3: Seasonal variation of turbidity

b. pH

Overall there was no much variation of pH in the samples tested. Out of 2069 samples tested 95.5% of the samples were found within recommended pH level for drinking water. The detailed seasonal variation of pH is given in ANNEX 3

c. Chlorine

Out of 34 urban reporting centers, only six health centers (Bajo, Bumthang, Gelephu, Phuntsholing, Samtse and Thimphu) monitored chlorine level in drinking water as there are no treatment facilities in other urban areas or some treatment plant do not use chlorine for disinfection. A total of 672 treated

samples were tested for Residual Chlorine. Out of which only 18.90% were adequately chlorinated. From rest of the samples 76.19% were either not chlorinated or were found below 0.2mg/L of residual chlorine while 4.91% exceeded the recommend residual chlorine level in drinking water i.e >5mg/L. (Figure 4).

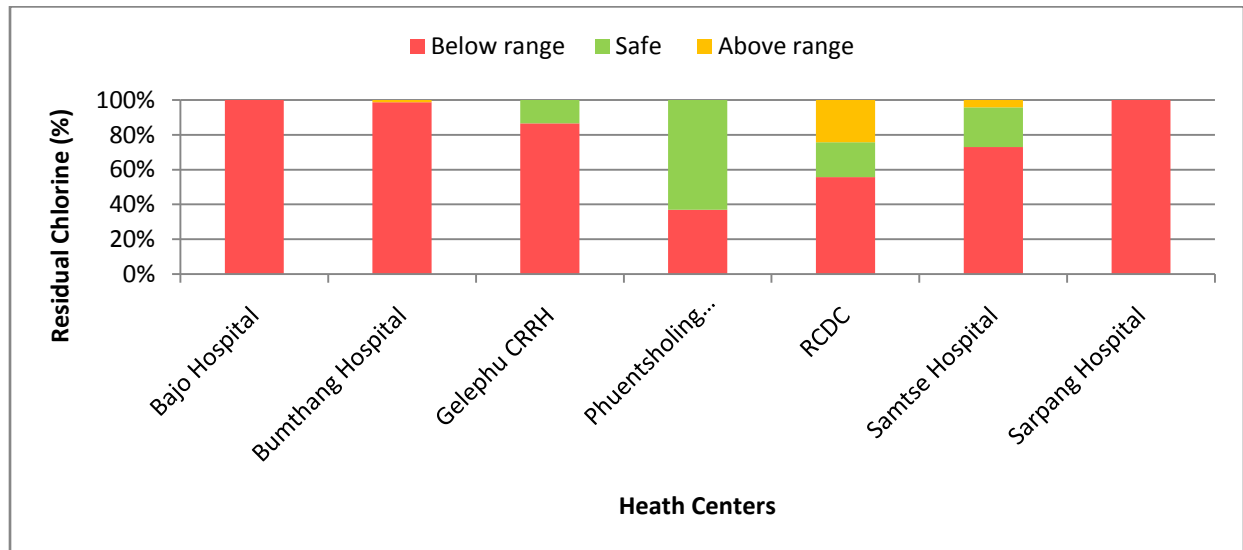


Figure 4: Residual Chlorine maintained at different Urban drinking water treatment facilities

3. Rural Drinking Water Quality Monitoring (RDWQM)

3.1. Overall status:

RDWQM is carried out bi-annually (once in February-March and once in July-August) by 274 health centers from across the country. Unlike Urban drinking water quality monitoring, currently only Escherichia Coli (E. Coli), appearance and odor is monitored for rural drinking water quality monitoring. E.coli is tested using 3M Petrifilm E.Coli test kit.

3.2. Report

A total of 5962 samples were collected and tested for E. Coli. Out of which 66.55% were found safe. Out of 33.42% unsafe, 28.48% falls into low health risk category, 4.67% falls into intermediate to high health risk category and 0.27% were grossly polluted (Detailed health risk category of the samples are shown in figure 7).

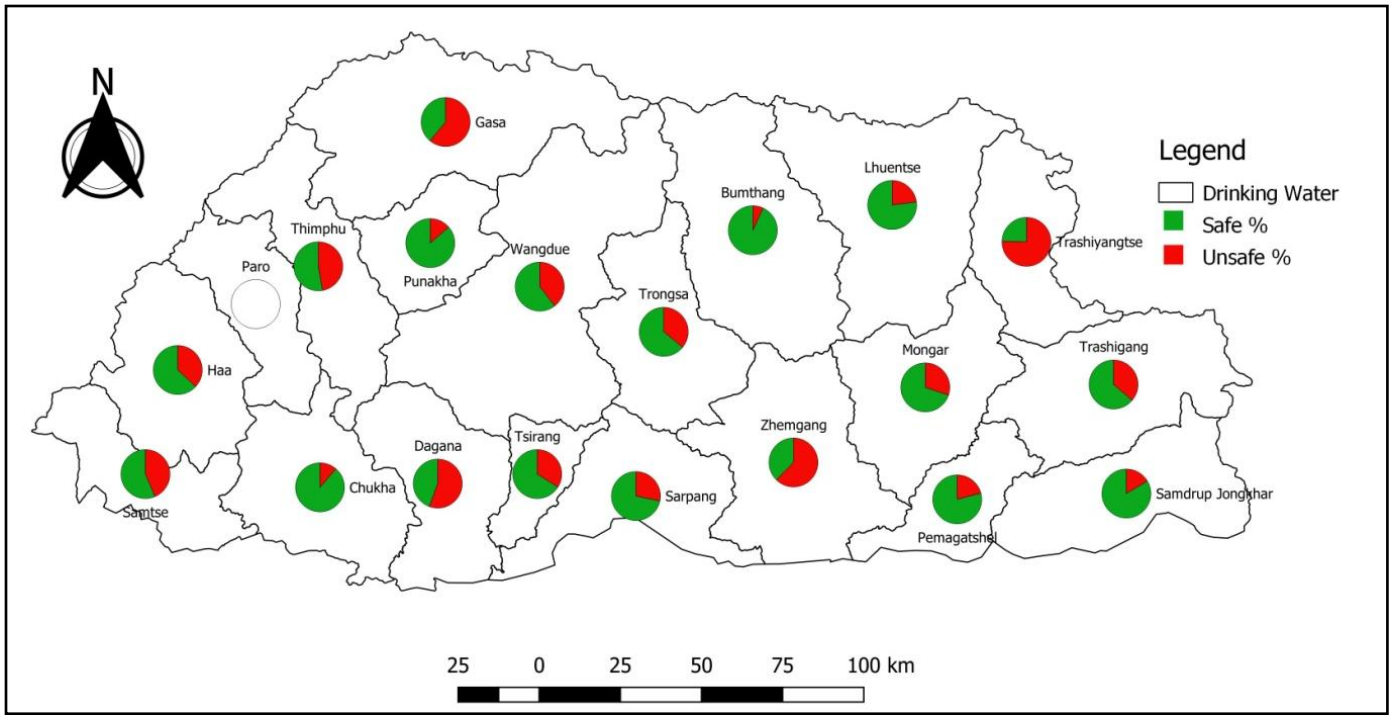


Figure 5: Overall rural drinking water quality in terms of Thermotolerant coliform at dzongkhag level

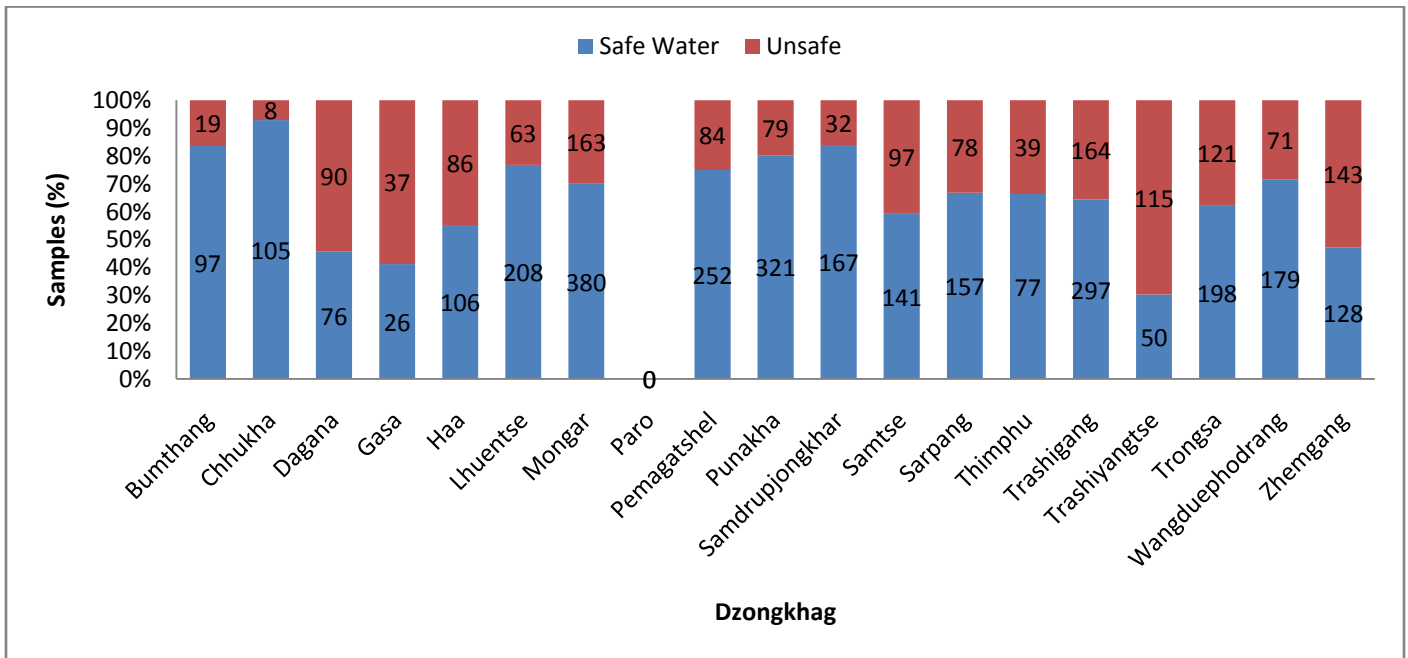


Figure 6: Dzongkhag wise rural drinking water quality in terms of Thermotolerant coliform

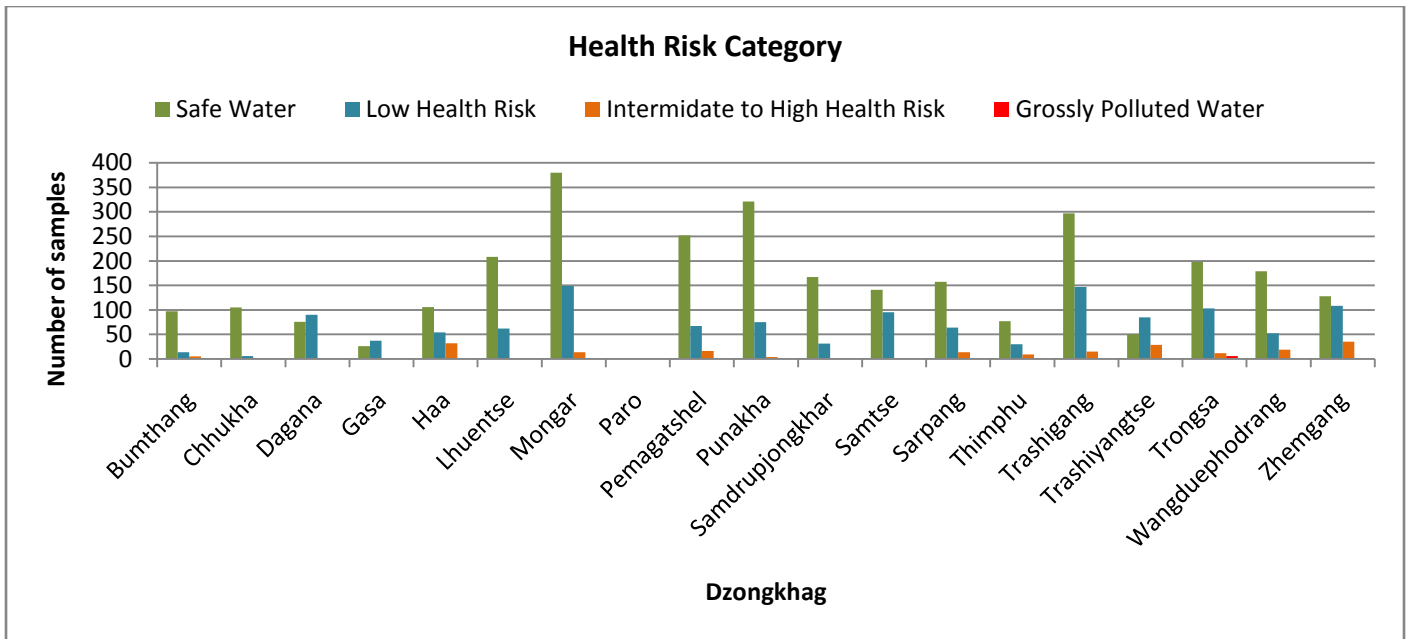


Figure 7: Health risk category of the water quality results from different dzongkhags

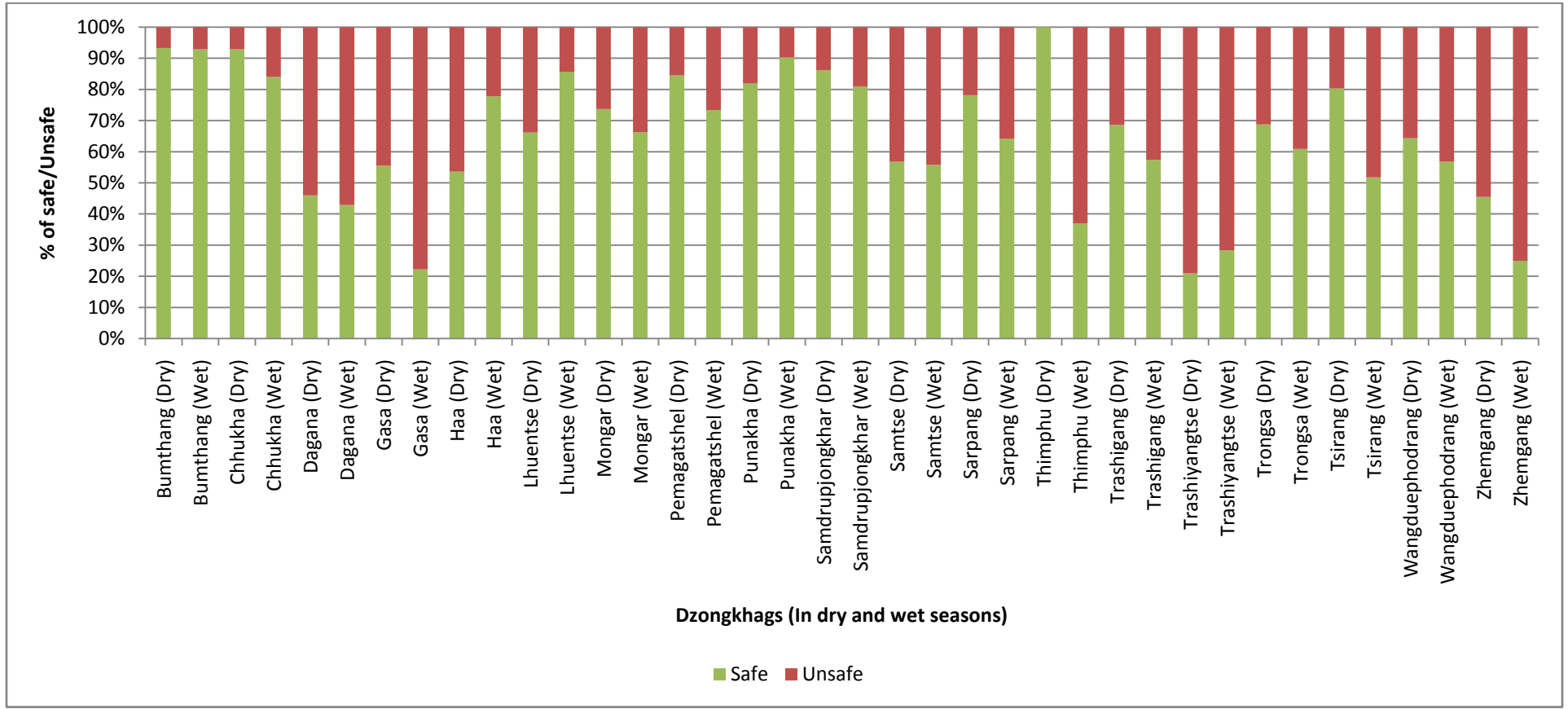


Figure 8: Seasonal variation of rural drinking water quality

	Dagapela MSS	0	0	0	0	0	0	0	0	0	0	0	0
	Dagapela Town	0	0	0	0	0	3	0	0	0	0	0	0
	RBA Dagapela	0	0	0	0	0	4	0	0	0	0	0	0
Damphu Hospital	Damphu Dratshang	0	0	0	0	4	0	0	3	0	0	0	0
	Damphu HSS	0	0	0	0	5	0	0	2	0	0	0	0
	Damphu LSS	0	0	0	0	3	0	0	3	1	0	0	0
	Damphu Town	0	0	0	0	6	0	0	3	0	0	0	0
	Hospital Area	0	0	0	0	4	2	0	3	0	0	0	0
	RBP Colony	0	0	0	0	2	31	0	0	1	0	0	0
Gedu Hospital	GCBS Boys's hostel(Kitchen)	0	0	0	0	0	0	0	0	0	0	0	0
	GCBS Girl's hostel(Kitchen)	0	2	6	0	0	0	0	0	0	0	0	0
	Gedu Hospital	0	2	3	0	0	0	0	0	0	0	0	0
	Gedu HSS	0	21	3	0	0	0	0	0	18	0	0	0
	Gedu Lapsakha town	0	70	45	0	0	0	4	0	0	0	0	0
	Gedu Police camp	0	2	4	0	0	3	0	0	0	0	0	0
	Gedu Zero	0	15	1	0	0	0	0	0	0	0	0	0
Gelephu CRRH	AWP colony (Treated)	0	0	20	0	50	0	0	3	0	1	0	0
	CRRH Kitchen Tap water (Treated)	0	0	0	0	20	0	0	0	0	0	0	0
	Fishery Area, Tap Water (Treated)	9	0	0	0	32	0	0	0	0	0	0	0
	Gelephu HHS (Treated)	0	0	2	0	6	10	0	0	0	0	0	0
	Gelephu LSS (Treated)	0	0	0	0	9	6	0	6	0	0	0	0
	Gelephu Town Tap water (Treated)	3	0	0	0	0	0	0	0	3	0	0	0
	Kuendrup HSS (Treated)	5	0	0	0	30	11	0	8	0	0	0	0
	Lodrai Jail RBP Camp Tap (Treated)	0	0	10	0	67	2	0	6	0	0	0	0
	Lodrai RBA Tap Water (Treated)	10	0	7	0	66	30	0	20	0	1	0	0
	Losel Gyatsho Academy (Treated)	20	0	0	0	7	10	0	9	0	7	0	0

	Maw Khola Reservoir Tank (Treated)	0	0	0	0	0	0	0	0	0	0	0	0
	Maw Khola Reservoir Tank, Pemathang (Treated)	1	0	0	0	4	0	0	0	0	0	0	0
	Pelrithang MSS (Treated)	0	0	0	0	3	0	0	3	0	4	0	0
	Pelrithang Reservoir Tank, Rai Dara (Treated)	4	0	5	0	6	0	0	0	0	0	0	0
	RBP Border Check-post (Treated)	0	0	0	0	0	5	0	0	0	0	0	0
	RBP Camp, Gelephu (Treated)	0	0	0	0	82	3	0	0	8	70	0	0
	Tali Dratshang (Treated)	0	0	0	0	2	0	0	0	0	0	0	0
Gidakom Hospital	Bjemina Primary School	0	0	0	0	0	0	0	0	0	0	0	0
	Bjemina Stone Quarry/SSSF	0	0	0	0	0	0	0	0	0	0	0	0
	Gidakom Hospital	0	0	0	0	0	0	0	0	0	0	0	0
	Khasadrapchu Middle Secondary School	0	0	0	0	0	0	0	0	0	0	0	0
Gomtu Hospital	Bazar water (Dong Khola)	4	1	NR	2	NR	0	1	NR	2	3	0	NR
	Gomtu Middle Secondary School	1	3	NR	1	NR	0	0	NR	2	0	0	NR
	Gomtu RBA	2	2	NR	3	NR	3	1	NR	1	0	1	NR
	Hospital Kitchen	1	2	NR	0	NR	1	0	NR	1	0	0	NR
	PCAL Main Gate	3	2	NR	1	NR	1	0	NR	2	1	1	NR
	RBP Office Tap	2	3	NR	0	NR	1	0	NR	1	0	1	NR
Haa Hospital	Bali BHU I	0	NR	0	NR	NR	0	NR	NR	NR	0	0	NR
	New Hospital Kitchen	0	NR	0	NR	NR	0	NR	NR	NR	0	0	NR
	RBP Camp	0	NR	0	NR	NR	1	NR	NR	NR	0	0	NR
	Sangay Restaurant	0	NR	0	NR	NR	0	NR	NR	NR	0	0	NR
	Ugyen Dorji HSS	0	NR	0	NR	NR	1	NR	NR	NR	0	0	NR
	Kanglung BHU I	49	3	10	90	63	179	186	332	261	75	61	30
	Jampeling HSS	3	0	0	0	2	0	0	5	0	1	0	2
Kanglung BHU	Kanglung LSS	6	0	8	43	20	20	150	98	90	25	20	16

	Kanglung Shedra	3	0	0	10	9	36	2	1	5	5	3	0
	Lower market	9	0	0	1	4	55	27	57	30	12	10	3
	Sherubtse college	10	0	0	0	2	0	0	65	100	12	14	4
	Upper market	10	0	1	17	14	23	3	45	20	10	6	0
Lhuentse Hospital	BPC	0	3	1	3	2	3	4	1	2	0	2	0
	Dzong Area	2	0	2	4	3	3	5	2	1	1	5	2
	Hospital Area	0	3	0	0	0	2	3	2	3	0	1	0
	Lhuentse HSS	1	4	4	1	4	3	3	1	2	0	2	1
	Lhuentse PS	2	2	3	2	1	5	4	0	3	1	2	2
	Phaling Bazer	0	2	1	0	0	4	4	2	2	2	3	1
Monggar ERRH	Hospital Main Distribution Tank	10	7	NR	NR	NR	NR	NR	10	0	NR	5	0
	Mongar Dratshang	5	0	NR	NR	NR	NR	NR	17	2	NR	11	0
	Mongar HSS	3	3	NR	NR	NR	NR	NR	5	0	NR	0	0
	Mongar LSS	9	5	NR	NR	NR	NR	NR	32	0	NR	0	0
	Mongar Town	17	15	NR	NR	NR	NR	NR	20	5	NR	3	0
	Police Camp	12	4	NR	NR	NR	NR	NR	38	0	NR	0	0
	Trailing	20	20	NR	NR	NR	NR	NR	30	7	NR	5	3
Nganglam BHU I	Nganglam BHU	0	2	0	NR	0	5	NR	5	3	1	1	2
	Nganglam Higher Secondary School	0	0	0	NR	0	3	NR	1	0	2	0	0
	Nganglam Lower Secondary School	0	3	0	NR	0	1	NR	2	2	2	0	0
	Nganglam Town A	0	2	0	NR	0	2	NR	5	2	1	0	3
	Nganglam Town B (Near BHU)	0	0	0	NR	0	7	NR	4	1	3	2	2
Panbang BHU I	Panbang Bazaar	0	2	0	0	NR	NR	2	2	0	6	NR	NR
	Panbang BHU	0	2	0	2	NR	NR	3	2	2	3	NR	NR
	Panbang Primary School (Tap water)	0	0	1	2	NR	NR	2	0	2	4	NR	NR
	Sonamthang Dratshang (Tap water)	1	2	1	0	NR	NR	4	4	0	7	NR	NR
	Thinleygang Central School	2	1	2	1	NR	NR	6	7	0	8	NR	NR

Paro Hospital	Gauwpay MSS	0	2	8	18	0	NR	0	NR	22	NR	42	0
	Hospital Kitchen	8	0	9	196	4	NR	9	NR	2	NR	1	0
	Khangkhu Middle Secondary School	6	0	0	6	2	NR	0	NR	0	NR	1	0
	NIE Tapping Point	6	0	17	34	0	NR	0	NR	8	NR	1	0
	RBP Area	5	4	8	20	24	NR	12	NR	48	NR	1	0
	Rinpung Dzong tap Water	12	2	8	148	0	NR	40	NR	40	NR	12	0
	Tshoungdu Town Last Tapping Point	9	10	8	39	6	NR	20	NR	0	NR	19	0
	Wuchu Lower Secondary School	0	0	1	2	5	NR	4	NR	0	NR	4	0
Pemagatshel Hospital	Dratshang	NR	NR	NR	NR	NR	NR	84	2	NR	70	NR	NR
	Forest Colony	NR	NR	NR	NR	NR	NR	64	3	NR	28	NR	NR
	Hospital Area	NR	NR	NR	NR	NR	NR	98	4	NR	27	NR	NR
	Pemagatshel MSS	NR	NR	NR	NR	NR	NR	52	3	NR	50	NR	NR
	RBP Area	NR	NR	NR	NR	NR	NR	58	2	NR	32	NR	NR
	Town Area	NR	NR	NR	NR	NR	NR	74	6	NR	48	NR	NR
Phuentsholing Hospital	College of Science and Technology	3	3	2	0	0	0	NR	NR	1	1	NR	NR
	Hospital Kitchen tap(Treated)	0	0	0	0	0	0	NR	NR	0	0	NR	NR
	Norbu Academy (Kharbandi)	0	0	1	0	0	0	NR	NR	1	2	NR	NR
	Phuentsholing HSS (Treated)	2	3	0	0	0	0	NR	NR	0	1	NR	NR
	Phuentsholing LSS(Treated)	5	2	0	0	0	0	NR	NR	1	0	NR	NR
	Phuentsholing MSS(Treated)	0	0	0	1	0	0	NR	NR	0	0	NR	NR
	RBP Colony	0	6	3	0	0	0	NR	NR	2	1	NR	NR
	Sonamgang Middle Sec School	3	3	0	0	0	0	NR	NR	0	0	NR	NR
	Town Area (Zangdopelri)	2	0	4	0	0	0	NR	NR	0	0	NR	NR
Punakha Hospital	Khuruthang MSS	0	1	5	3	2	3	20	0	0	0	0	0

	Khuruthang Town	1	0	0	6	0	2	0	2	2	0	0	0
	Khuruthang VTI	2	0	3	0	2	4	38	3	12	6	3	7
	Punakha Centre School	0	0	4	5	0	3	0	0	0	0	0	0
	Punakha Hospital	0	0	10	7	12	6	44	15	18	13	13	16
	Ugyen Academy HSS	0	0	2	0	0	2	1	1	0	0	0	0
Riserboo Hospital	Hospital Kitchen	0	0	0	0	0	0	0	0	0	NR	0	0
	Riserboo Town	0	0	0	0	0	0	0	0	0	NR	0	0
	Staff Quarter (Canteen)	0	0	0	0	0	0	0	0	0	NR	0	0
	Tashitse Higher Secondary School	0	0	0	1	0	2	1	0	0	NR	0	0
	Tshozor	0	0	0	0	0	0	0	0	0	NR	0	0
	Wamrong Lower Secondary School	0	0	0	0	0	1	0	0	0	NR	0	0
	Wamrong Town	0	0	0	0	0	1	0	0	0	NR	0	0
Royal Centre for Disease Control	BPT R1 Tank (Treated)	0	0	0	0	0	0	0	12	0	0	0	0
	Changjiji Colony Reservoir Tank (Treated)	0	0	0	0	0	2	0	6	0	0	0	0
	Jungshina Treatment Plant (Treated)	0	0	0	0	0	0	0	4	0	0	0	0
	Jushina Treatment Plant Sourc(Not Treated)	52	35	0	5	19	41	19	4	2	0	4	36
	Motithang Treatment Plant (Treated)	0	0	0	0	0	0	0	0	0	0	0	0
	Motithang Treatment Plant Source (Not Treated)	0	1	1	0	76	208	42	26	6	0	120	11
	Reservoir Tank near BCCI office (Treated)	0	0	0	0	0	0	0	0	0	0	2	0
	Reservoir Tank near Swimming pool (Treated)	0	0	0	0	0	0	0	0	0	0	0	0
	Tank above Hospital colony (Treated)	0	0	0	0	0	0	0	6	0	0	0	0
	Tank above NPPF colony (Treated)	0	1	0	0	0	0	0	9	0	0	0	0

	Three Tank Lower Motithang (Treated)	0	35	0	0	0	0	0	0	0	0	0	0
Samdrup Jongkhar Hospital	Bazar	2	20	16	5	4	6	NR	NR	NR	30	NR	NR
	Dechen Primary School	8	14	12	10	26	16	NR	NR	NR	40	NR	NR
	Forest Colony	10	16	9	12	12	6	NR	NR	NR	4	NR	NR
	Hospital Colony	5	15	10	40	59	42	NR	NR	NR	1	NR	NR
	NPPF Colony	18	18	8	21	25	13	NR	NR	NR	0	NR	NR
	RBP Colony	16	19	11	30	15	24	NR	NR	NR	0	NR	NR
	Samdrupjongkhar Middle Secondary School	12	5	8	56	51	23	NR	NR	NR	0	NR	NR
Samdrupchholing BHU I	Hospital Tap	6	4	3	7	10	13	5	16	4	11	5	5
	Karmaling HSS	2	0	0	3	20	1	0	5	0	0	0	0
	NHDCL	5	5	0	10	30	12	12	40	20	10	7	3
	Phuentshothang MSS	5	2	3	100	2	2	5	2	5	2	5	3
	Town Area	8	10	5	8	2	8	5	8	4	8	7	4
Samtse Hospital	Main Town Tap(Treated)	0	0	0	0	0	10	0	10	0	0	4	0
	RBA Camp(Treated)	1	0	0	0	21	4	0	0	0	0	6	3
	RBP Camp(Treated)	0	0	1	0	0	1	0	0	0	0	2	2
	Samtse College of Education(Treated)	0	0	0	0	0	0	0	0	0	0	6	0
	Samtse Dratshang(Treated)	2	0	0	0	16	0	5	25	0	0	4	0
	Samtse Hospital(Treated)	0	0	2	0	0	2	0	0	0	0	0	0
	Samtse HSS(Treated)	1	0	0	0	2	0	0	0	0	0	0	0
	Samtse LSS(Treated)	0	0	0	0	0	2	8	0	12	0	2	0
Sarpang Hospital	Military Camp RBP	NR	NR	NR	0	NR	6	NR	NR	NR	NR	NR	NR
	Sarpang Dratshang	NR	NR	NR	0	NR	3	NR	NR	NR	NR	NR	NR
	Sarpang Hospital	NR	NR	NR	2	NR	8	NR	NR	NR	NR	NR	NR
	Sarpang HSS	NR	NR	NR	0	NR	3	NR	NR	NR	NR	NR	NR
	Sarpang L S S	NR	NR	NR	0	NR	4	NR	NR	NR	NR	NR	NR
	Water Reservoir Tank	NR	NR	NR	2	NR	10	NR	NR	NR	NR	NR	NR
Sibsoo BHU I	Dratshang Belbotey	4	5	8	NR	20	21	18	12	14	13	NR	9
	Hospital Kitchen Tap	5	5	8	NR	50	43	38	10	8	9	NR	8

	Tingtibi Town	0	0	NR	NR	NR	NR	NR	NR	NR	NR	NR	NR
	Tingtibi Town Reservoir Tank	0	0	NR	NR	NR	NR	NR	NR	NR	NR	NR	NR
	Yebilaptsa MSS	0	0	NR	NR	NR	NR	NR	NR	NR	NR	NR	NR
Zhemgang BHU I	BHU I	0	0	0	0	0	0	0	0	0	0	0	0
	Trong Municipal (Raw)	0	0	0	1	0	0	0	0	0	0	0	1
	Trong Municipal (Treated)	0	0	0	0	0	0	0	0	0	0	1	0
	Zhemgang HSS	0	0	0	0	0	0	1	0	0	0	0	0
	Zhemgang LSS	0	0	0	0	0	0	0	0	0	0	0	0
	Zhemgang Town	0	0	0	0	0	0	0	0	0	0	1	0

Color Index

	Grossly polluted
	Intermediate to high health risk
	Low health risk
	Safe water
NR	Not reported

Annex 2: Detailed monthly turbidity report from various sampling points of urban health centers

Health centers	Sampling points	Jan	Feb	Mar	Apr	May	June	July	Aug	Sept	Oct	Nov	Dec
Bajo Hospital	Bajo HSS (Treated)	1.05	0.06	0.4	5.18	NR	1.5	3.9	2.87	0	NR	2	0.54
	Bajo Town	1.2	0.3	7.5	1.9	NR	3.3	3	2.1	0	NR	1.25	0.22
	Distribution Tank (Treated)	1	0.16	0.5	5.76	NR	2	2.6	3.25	0.51	NR	2.92	0.04
	Dratshang (Treated)	1.02	0.5	0.16	1.91	NR	0	0	2.5	0	NR	1.37	0.1
	Hospital Area (Treated)	1.52	0.4	7.4	4.5	NR	2.8	3	2.62	0	NR	1.95	0.24
	Tencholing Military Head Quarter (Treated)	1.26	0.5	0.2	3.26	NR	2.2	2.9	2	2.97	NR	1.63	1.24
	Wangdue LSS (Treated)	1.22	0.3	0.15	4.97	NR	2.1	2.4	2.7	0	NR	4.64	1.36
Bumthang Hospital	Chamkhar Town (Treated)	0	0	0	0.01	0	0	0	0	0	0	NR	0
	Dekiling (Treated)	0	0	0	0.4	0	0	0	0	0	0	NR	0
	Hospital Area (Treated)	0	0.1	0	0.6	0	0	0	0	0	0	NR	0
	Kurje Drupchhu (Not Treated)	0	0	0	0	0	0	0	0	0	0	NR	0
	Nasphel Treatment Plant (Treated)	0	0	0	0.06	0	0	0	0	0	0	NR	0
	Tamshing Dratshang (Not Treated)	0	0	0	0.7	0	0	0	0	0	0	NR	0
	Wangduechholing Lower Secondary School	0	0	0	0.06	0	0	0	0	0	0	NR	0
Chhukha BHU I	Chhukha BHU	NR	1.09	0	NR	0.52	0.47	2.2	2.13	0	3.89	0.28	0
	Dzongsite Army Camp	NR	1.26	1.93	NR	0.29	3.23	5.11	1.55	33.99	3.83	1.15	5.06
	Market Area	NR	1.03	0.07	NR	1.97	0.57	1.16	1.4	0	0	0.17	9.46
	Wangchhu Middle secondary School	NR	0.12	0.1	NR	0.48	0.47	1.21	0.88	0	0.01	0.12	0
Dagana BHU I	BHU Kitchen	0	0	0	0	0	0	0	0	0	0	NR	NR
	Dagana HSS	0	0	0	0	0	0	0	0	0	0	NR	NR
	Dagana LSS	0	0	0	0	0	0	0	0	0	0	NR	NR
	Dratshang	0	0	0	0	0	0	0	0	0	0	NR	NR
	Town Area	0	0	0	0	0	0	0	0	0	0	NR	NR
Dagapela Hospital	Dagapela Dratshang	0	0	0	1.2	0.5	2	1.2	0	0	0	0	0
	Dagapela Hospital	0	0	0	2.1	0.3	1.8	1.8	0	0	0	0	0
	Dagapela MSS	0	0.24	0	1.5	1.5	1.9	1.4	1	0	0	0	0
	Dagapela Town	0	0	0	2.3	0	2.2	2	0	0	0	0	0

	RBA Dagapela	0	0	0	1.1	1.1	1.8	1	0	0	0	0	0
Damphu Hospital	Damphu Dratshang	0.15	0.08	0.35	0.41	0.5	0.3	2.34	18.48	0.51	2.02	0.21	0.19
	Damphu HSS	0.16	1.47	0.28	0.51	0.47	0.2	1.31	1.42	3.07	0.27	0.17	0.22
	Damphu LSS	0.93	0.5	0.06	0.67	0.7	0.3	3.17	0.4	0.07	0.11	0.18	0.43
	Damphu Town	0.51	0.02	0.09	0.4	0.6	0.26	0.52	3.71	0.09	0.69	0.13	0.27
	Hospital Area	0.43	0.47	0.22	0.61	0.5	1.96	0.07	0.5	0.87	0.47	0.12	0.27
	RBP Colony	0.39	0.08	0.1	0.76	7.8	2.6	1.44	0.34	0.06	0.48	0.16	0.13
Gedu Hospital	GCBS Boys's hostel(Kitchen)	0	0.02	0.1	0	0	0	0	0	0	0	0	0
	GCBS Girl's hostel(Kitchen)	0	0	0.1	0	0	0	0	0	0	0	0	0
	Gedu Hospital	0	0	0	0	0	0	0	0	0	0	0	0
	Gedu HSS	0	0	0	0	0	0	0	0	0	0	0	0
	Gedu Lapsakha town	0	0.1	0.2	0	0	0	0	0	0	0	0	0
	Gedu Police camp	0	0.14	0	0	0	0	0	0	0	0	0	0
	Gedu Zero	0	0	0	0	0	0	0	0	0	0	0	0
Gelephu CRRH	AWP colony (Treated)	1	0	3	0	0	2.3	0	1.2	0	1.2	0	0
	CRRH Kitchen Tap water (Treated)	1.4	0	1.6	0	0	0.1	0	1	0	1	0	0
	Fishery Area, Tap Water (Treated)	4.4	0	2	0	0	2	0	2.3	0	2.3	0	0.19
	Gelephu HHS (Treated)	2.6	0	1.4	0	0	0.9	0	0.8	0.2	8	0	0
	Gelephu LSS (Treated)	4	0	3	0	0	2	0	1.2	0	1.2	0	0
	Gelephu Town Tap water (Treated)	4	0	2	0	0	0.8	0	2	0.8	2	0.1	0.3
	Kuendrup HSS (Treated)	3.5	0	1	0	0	2	0	1.01	0	1.1	0	0
	Lodrai Jail RBP Camp Tap (Treated)	6.2	0	2.6	0	0	2.1	0	1.32	0	0.32	0	0
	Lodrai RBA Tap Water (Treated)	2	0	2	0	0	2.8	0	2	0	2	0.1	0.2
	Losel Gyatsho Academy (Treated)	2	0	3.3	0	0	2	0	2.8	0	2.8	0	0
	Maw Khola Reservoir Tank (Treated)	1.8	0	2	0	0	0.1	0	2.8	0	2.8	0	0
	Maw Khola Reservoir Tank, Pemathang (Treated)	4	0	3.4	0	0	0.1	0	2.4	0	2.4	0	1.4
	Pelrithang MSS (Treated)	1	0	2.1	0	0	2.3	0	1.28	0.8	1.23	0	0

	Pelrithang Reservoir Tank, Rai Dara (Treated)	2.1	0	2	0	0	1	0	3.2	0	3.2	0	0
	RBP Border Check-post (Treated)	6	0	2.2	0	0	2	0	2	0	2	0	0.3
	RBP Camp, Gelephu (Treated)	4	0	3	0	0	2.3	0	2.8	1	38.2	0	0.1
	Tali Dratshang (Treated)	4	0	3.2	0	0	3.2	0	2.8	0	3.12	0	0
Gidakom Hospital	Bjemina Primary School	0.01	0.2	0.07	0	0.07	0	0.05	0.02	3.03	0.01	0	0
	Bjemina Stone Quarry/SSSF	15.6	20.2	1.55	2.6	18.5	16.2	16.2	22	2.93	10.3	10.2	9.5
	Gidakom Hospital	0	0.6	0.91	1.5	0.8	0.9	0.79	4.6	2.9	0.7	0.75	1.9
	Khasadrapchu Middle Secondary School	0.03	0.3	0.3	0.02	2.4	0.6	0.9	2.6	1.26	0.7	0.5	0.4
Gomtu Hospital	Bazar water (Dong Khola)	2	2	NR	3	NR	3	1	NR	3	3	3	NR
	Gomtu Middle Secondary School	3	3	NR	2	NR	3	3	NR	1	3	2	NR
	Gomtu RBA	2	2	NR	1	NR	4	1	NR	2	2	3	NR
	Hospital Kitchen	2	1	NR	2	NR	2	2	NR	3	1	2	NR
	PCAL Main Gate	2	1	NR	2	NR	1	2	NR	2	2	1	NR
	RBP Office Tap	1	2	NR	2	NR	2	1	NR	3	2	2	NR
Haa Hospital	Bali BHU I	0	NR	0	NR	NR	0	NR	NR	NR	0	0	NR
	New Hospital Kitchen	0	NR	0	NR	NR	0	NR	NR	NR	0	0	NR
	RBP Camp	0	NR	0	NR	NR	0	NR	NR	NR	0	0	NR
	Sangay Restaurant	0	NR	0	NR	NR	0	NR	NR	NR	0	0	NR
	Ugyen Dorji HSS	0	NR	0	NR	NR	0	NR	NR	NR	0	0	NR
Kanglung BHU I	Jampeling HSS	0.23	0	0.31	3.37	1.19	0	0	2.09	0.26	0.21	0.09	0.2
	Kanglung BHU	1.11	0.33	0.19	2.02	1.93	0.13	0.05	0.11	0.58	0.09	0.31	0.09
	Kanglung LSS	1.06	0.45	0.33	2.94	2	1.94	7.7	2.4	1.15	1.31	1.21	0.15
	Kanglung Shedra	1.17	0	0.38	3.05	2.13	1.18	0.65	0.31	0.06	0.01	0.11	0.52
	Lower market	1.81	0	0	3.04	3.11	2.16	3.3	4.95	2.01	1.11	1.24	1.1
	Sherubtse college	0.19	4.02	0.1	6.85	3.15	0	1.34	8.05	3.94	1.41	1.1	0.59
	Upper market	1.09	0	0	6	2.07	1.72	2.11	4.75	1.4	1.13	1.35	0.92
Lhuentse Hospital	BPC	0.2	0	0	0.2	0.2	0.6	0.4	0.9	0.8	0	0	0.2
	Dzong Area	0.4	0	0	0.3	0.4	0.8	0.6	0.8	0.7	0.5	0.2	0.2
	Hospital Area	0	0	0	0	0	0.4	0.5	0.7	0.4	0.8	0	0
	Lhuentse HSS	0.3	0	0	0	0.2	0.6	0.3	0.9	0.7	0.63	0	0

	Lhuentse PS	0.2	0	0	0.1	0	1	0.5	0.7	0.6	0.8	0	0
	Phaling Bazer	0.4	0	0	0	0	0.8	0.4	0.8	0.6	0.56	0.4	0.2
Monggar ERRH	Hospital Main Distribution Tank	1.12	1.23	NR	NR	NR	NR	NR	2	3.86	NR	0	0
	Mongar Dratshang	0.21	0.25	NR	NR	NR	NR	NR	1.64	0	NR	0	0
	Mongar HSS	0.56	1	NR	NR	NR	NR	NR	0.08	0	NR	0	0.12
	Mongar LSS	0.99	0.96	NR	NR	NR	NR	NR	0.3	0	NR	0	0.09
	Mongar Town	2.36	1.08	NR	NR	NR	NR	NR	1.08	0.25	NR	0.46	0.56
	Police Camp	1.1	0.65	NR	NR	NR	NR	NR	0	0	NR	0	0
	Trailing	2.45	2.69	NR	NR	NR	NR	NR	3.21	1.25	NR	0.23	1.23
Nganglam BHU I	Nganglam BHU	NR	0	0.1	NR	0	0.04	NR	0.1	0	0.1	0.1	0.1
	Nganglam Higher Secondary School	NR	0	0	NR	0	0.01	NR	0.002	0.01	0.01	0.2	0.01
	Nganglam Lower Secondary School	NR	0	0	NR	0	0	NR	0.005	0.001	0.002	0.3	0
	Nganglam Town A	NR	0	1.16	NR	0	0.02	NR	0.004	0.02	0.001	0.02	0.02
	Nganglam Town B (Near BHU)	NR	0	0	NR	0	0.05	NR	0.007	0.02	0.12	0.3	0.2
Panbang BHU I	Panbang Bazaar	0.3	0.34	0.3	0	NR	NR	0.4	0.36	4	0.36	NR	NR
	Panbang BHU	0.3	0.5	0.32	0.2	NR	NR	1	0.6	3	0.2	NR	NR
	Panbang Primary School (Tap water)	0.4	0.4	0.34	2	NR	NR	0.6	0.8	4	0.34	NR	NR
	Sonamthang Dratshang (Tap water)	0.5	0.5	0.5	0.6	NR	NR	0.6	0.6	3	0.3	NR	NR
	Thinleygang Central School	0.4	0.4	0.42	0.8	NR	NR	1.3	0.6	5	0.5	NR	NR
Paro Hospital	Gauwpay MSS	2.09	0.12	0	0	0	NR	0	NR	0	NR	0	0
	Hospital Kitchen	0	0.2	55	0	0	NR	0	NR	0	NR	0	0
	Khangkhu Middle Secondary School	0	0	0	0	0	NR	0	NR	2.91	NR	0	0
	NIE Tapping Point	0.08	0.1	0	1.86	0	NR	0	NR	0	NR	0	0
	RBP Area	0.45	1.16	0.07	0	0	NR	0	NR	0	NR	1	0.08
	Rinpung Dzong tap Water	0	0.2	0	0	0	NR	0	NR	0	NR	0	0
	Tshoungdu Town Last Tapping Point	0.08	0.02	0	0	0	NR	0	NR	0	NR	0	0.09
	Wuchu Lower Secondary School	0	0	0	0	0	NR	0	NR	0	NR	0	0
Pemagatshel Hospital	Dratshang	NR	NR	NR	NR	NR	NR	2.5	0.31	NR	0.85	NR	NR
	Forest Colony	NR	NR	NR	NR	NR	NR	1.85	1.2	NR	1.02	NR	NR

	Hospital Area	NR	NR	NR	NR	NR	NR	2.82	1.5	NR	1.25	NR	NR
	Pemagatshel MSS	NR	NR	NR	NR	NR	NR	1.16	1.54	NR	1.54	NR	NR
	RBP Area	NR	NR	NR	NR	NR	NR	1.54	1.9	NR	1.09	NR	NR
	Town Area	NR	NR	NR	NR	NR	NR	2.5	0.22	NR	1.09	NR	NR
Phuentsholing Hospital	College of Science and Technology	0.3	0.3	0.2	0.2	2.28	2.2	NR	NR	1.5	1.3	NR	NR
	Hospital Kitchen tap(Treated)	0.3	0.2	3	1.3	2.5	2.3	NR	NR	0.6	1.5	NR	NR
	Norbu Academy (Kharbandi)	0.6	0.3	3	0.2	2.22	2.5	NR	NR	1	1.5	NR	NR
	Phuentsholing HSS (Treated)	0.5	0.3	2	0.3	2.6	2.3	NR	NR	1	1	NR	NR
	Phuentsholing LSS(Treated)	0.6	0	3.1	0.1	3.4	2.4	NR	NR	1.4	1.5	NR	NR
	Phuentsholing MSS(Treated)	0.6	0.2	2	0.1	2.5	2	NR	NR	0.9	0.9	NR	NR
	RBP Colony	0.2	0.3	0.2	0.3	2.5	2.4	NR	NR	1.5	1.5	NR	NR
	Sonamgang Middle Sec School	0.3	0.5	2	0.2	2	2.4	NR	NR	1.3	1.5	NR	NR
	Town Area (Zangdopelri)	0.5	0.3	3	0.2	2.4	2.5	NR	NR	0.5	1	NR	NR
Punakha Hospital	Khuruthang MSS	0	0	0.1	0	0.2	0.6	3.32	0.2	0.5	0.2	0.2	0.2
	Khuruthang Town	0	0	0.24	0	0.5	0.5	0	0.6	0.5	0.2	0	0.6
	Khuruthang VTI	0	0	0.05	0	0.5	0.4	0	0.6	0.6	0.6	0.3	0.3
	Punakha Centre School	0	0	0	0	0.6	0.2	2.1	0	0.2	0.3	0	0.3
	Punakha Hospital	0	0	0.02	0	0.1	0.8	5.52	1.6	0.6	0.2	0.2	0.6
	Ugyen Academy HSS	0	0	0	0	0.3	0.5	0	0.6	0.5	0	0	0.3
Riserboo Hospital	Hospital Kitchen	0	0	0	0	0	0	0	0	0		0	0
	Riserboo Town	0	0	0	0	0	0	0	0	0		0	0
	Staff Quarter (Canteen)	0	0	0	0	0	0	0	0	0		0	0
	Tashitse Higher Secondary School	0	0	0	0	0	0	0	0	0		0	0
	Tshozor	0	0	0	0	0	0	0	0	0		0	0
	Wamrong Lower Secondary School	0	0	0	0	0	0	0	0	0		0	0
	Wamrong Town	0	0	0	0	0	0	0	0	0		0	0
Royal Centre for Disease Control	BPT R1 Tank (Treated)	0.2	7.38	5.85	0	5.33	0	4.58	36.31	0.48	0.8	3.52	0.94
	Changjiji Colony Reservoir Tank (Treated)	45	0	0	0	0	0	0	0	0.04	0	0.02	0.03
	Jungshina Treatment Plant (Treated)	0	0.15	0	2.53	0	0	0.05	0.05	0.18	0	0.26	0.12

	Jushina Treatment Plant Sourc(Not Treated)	0	0	0	0.19	0.83	0.02	0.09	1.45	0.06	0.07	0	2.62
	Motithang Treatment Plant (Treated)	0.3	0.57	0.27	0.17	0.48	0	2.28	1.71	0.47	0.57	0.02	0.67
	Motithang Treatment Plant Source (Not Treated)	0.47	1.01	0.02	1.15	0.88	0.22	0.98	2.37	0.38	0.24	0.19	2.5
	Reservoir Tank near BCCI office (Treated)	0	0	0	1.19	0	0	0.24	0.33	0.19	0	0	0.06
	Reservoir Tank near Swimming pool (Treated)	0	0	0	0	0	0	0.43	0.05	1.15	0.8	0	0.04
	Tank above Hospital colony (Treated)	0.14	1.22	0.4	0.58	0.41	0	1.26	0.43	1.67	0.99	0.3	1.01
	Tank above NPPF colony (Treated)	0	0.8	2.3	1.07	0.33	0	0.14	0.07	0.23	0.71	0.24	0.52
	Three Tank Lower Motithang (Treated)	0.18	0.45	0	0.06	0.54	0.34	1.74	1.87	0.77	0.63	0.7	1.26
Samdrup Jongkhar Hospital	Bazar	15.2	23.2	21.2	1.4	1.4	8.2	NR	NR	NR	0	NR	NR
	Dechen Primary School	0.15	28.3	23.5	4.8	3.8	11.3	NR	NR	NR	0	NR	NR
	Forest Colony	0.32	31.2	28.1	1.3	0.8	3.1	NR	NR	NR	0	NR	NR
	Hospital Colony	0.23	45.2	32.3	4.1	5.2	15.7	NR	NR	NR	0	NR	NR
	NPPF Colony	0.22	23.1	20.1	6.5	4.2	6.1	NR	NR	NR	0	NR	NR
	RBP Colony	0.22	25.9	21.9	16.7	18.1	12.8	NR	NR	NR	0	NR	NR
	Samdrupjongkhar Middle Secondary School	0.36	34.1	24.1	19	24.5	17.3	NR	NR	NR	0	NR	NR
Samdrupchholing BHU I	Hospital Tap	0.14	0	0.05	1.83	0.4	1.99	0.33	1.99	1.54	1.99	0.3	0.24
	Karmaling HSS	0.1	0	0	7	1.9	0	11.45	0	0	0	0	0
	NHDCL	0.24	0	0.24	0.01	0.48	4	1.65	4	0.92	0.92	0.92	0.24
	Phuentshothang MSS	0.11	0	0	0	0	0	5.63	0.45	0	0	0.64	0.11
	Town Area	0.49	0	0	0	0	0.56	1.65	0.62	0	0	1.65	0.24
Samtse Hospital	Main Town Tap(Treated)	0	5.75	0.18	0.19	0.24	0.15	0.26	2.75	0.64	0	0	0.05
	RBA Camp(Treated)	0	0	0	0.1	0.27	0.82	0.29	6.46	1.46	0	0	0.05
	RBP Camp(Treated)	0	0	0	0.2	0.21	12.13	0.14	2.88	0.39	0.18	0	0.03

	Samtse College of Education(Treated)	22.39	0	0	0.11	0.29	2.84	0	1.93	0.64	0.02	0	0.07
	Samtse Dratshang(Treated)	0	0	0	0.26	0.16	1.46	0.25	0.47	0.64	0	0	0.12
	Samtse Hospital(Treated)	0.01	0	0	1.97	0.11	0.01	0.13	1.92	0.13	0	0	0.1
	Samtse HSS(Treated)	0.21	0	0.29	4.19	1.3	0.11	0.25	2.07	0.11	0	0.15	0.04
	Samtse LSS(Treated)	0.2	0	0	0.18	0.21	0.64	0.12	4.01	0.82	0	0	0.06
Sarpang Hospital	Military Camp RBP	NR	NR	NR	0.06	NR	1.2	NR	NR	NR	NR	NR	NR
	Sarpang Dratshang	NR	NR	NR	0.08	NR	1.5	NR	NR	NR	NR	NR	NR
	Sarpang Hospital	NR	NR	NR	0.18	NR	1.9	NR	NR	NR	NR	NR	NR
	Sarpang HSS	NR	NR	NR	0.08	NR	1.65	NR	NR	NR	NR	NR	NR
	Sarpang L S S	NR	NR	NR	0.09	NR	1.3	NR	NR	NR	NR	NR	NR
	Water Reservoir Tank	NR	NR	NR	0.18	NR	2	NR	NR	NR	NR	NR	NR
Sibsoo BHU I	Dratshang Belbotey	1.17	1.18	1.19	NR	0.36	0.35	0.29	0.26	0.29	0.31	NR	0.41
	Hospital Kitchen Tap	1.11	1.14	1.18	NR	0.67	0.82	0.64	3.73	2.23	2.26	NR	1.1
	Peljorling Higher Secondary School	1.18	1.25	1.23	NR	0.25	0.21	0.2	1.4	1.13	1.11	NR	0.42
	Peljorling Lower Secondary School	1.2	1.17	1.15	NR	0.2	0.17	0.22	1.43	1.25	1.21	NR	0.46
	RBA Belbotey	1.2	1.23	1.22	NR	1.2	1.17	1.27	1.61	1.12	1.16	NR	0.53
	Tashicholing Town	1.16	1.11	1.16	NR	1.37	1.29	1.14	0.45	1.23	1.1	NR	0.48
Trashi Yangtse Hospital	Barzam Chu/Bhimkhar	0	0	0	0	0.6	0	19.41	0	0.1	0	0.47	0.1
	Byaling HSS	0	0	0	0	0	0	2.77	0.44	0.2	1	0.75	0
	Dratshang	0	0	0	3.45	0	0.41	26.48	8.7	0.8	2.52	0.12	0
	Hospital Area	0	0	0	0	0.3	0.33	19.41	0	0.9	5	1.29	0
	Tashiyangtse LSS	0	0	0	0.35	0.2	0	0	0	0.1	2.31	2.13	0
	Town Area	0	0	0	0	0	0	7.64	0	0.6	0.49	1.29	0
	Zorigchuksum	1.3	0	0	0.05	0.26	0.01	8.59	0	0.1	1.8	0.65	0.1
Trashigang Hospital	Hospital Kitchen Tap	0	1	2	0	0	0.6	0	NR	0	0.15	NR	NR
	Main Distribution Tank	0	0	1	0	0	0.2	0	NR	0	0.23	NR	NR
	Town Area	0	1	0	0	1	0.6	0	NR	0	0.6	NR	NR
	Trashigang MSS	0	1	0	0	0	0.2	0	NR	0	0.23	NR	NR
Trongsa Hospital	Hospital Staff Quarter	0	0.02	0	0	0	0	2	3.01	0.02	0	0	0
	PWD Colony	0.02	0.01	0	4	0	0	1	8.17	0.03	0	0	0

	Sherabling HSS	0.02	0.01	0	0	0	0	2	0.41	0.01	0	0	0
	Tongsa LSS	0.04	0.01	0	0	0	0	0.02	0	0.02	0	0	0
	Trongsa Dratshang	0	0.02	0	0	0	0	1	24.7	0.02	0	0	0
	Trongsa Hospital	0.44	0.01	0	0	0.12	0	2	5.79	0.01	0	0	0
	Trongsa Town	0.24	0.01	0	0	0.21	0	2	1.77	0.03	0	0	0
Tsimalakha Hospital	CHPC Colony	2.1	2.1	0.1	0.15	4	16	0.21	0	0.2	0.23	NR	0.21
	Chukha HSS	0.25	0.1	0	0.12	3.8	0.13	1.23	0.4	1.23	0.53	NR	1.1
	Hospital Area	0.3	0.3	3	2.1	0.12	2.1	0.12	3	0.12	0.17	NR	0.15
	Tsimakha Primary School	0.71	0.5	0	0.2	2.8	0.2	0.15	1	6.5	1.26	NR	2.13
	Tsimalakha Central School Junior Campus	0.5	1.2	1	1.5	3	1.5	1.31	0.7	1.31	1.32	NR	1.01
	Tsimalakha Town	2.3	1.2	0	0	4.2	0	0.11	1	0.11	0.22	NR	0.22
	Tsimasham Dratshang	2.5	4.1	0	0.21	2	0.2	0.35	0.3	0.35	0.25	NR	0.31
Yebilaptsa Hospital	Hospital Area	1.75	1.65	NR	NR	NR	NR	NR	NR	NR	NR	NR	NR
	Tingtibi PS	0.65	0.75	NR	NR	NR	NR	NR	NR	NR	NR	NR	NR
	Tingtibi Town	0.76	0.75	NR	NR	NR	NR	NR	NR	NR	NR	NR	NR
	Tingtibi Town Reservoir Tank	0.71	0.65	NR	NR	NR	NR	NR	NR	NR	NR	NR	NR
	Yebilaptsa MSS	0.75	0.75	NR	NR	NR	NR	NR	NR	NR	NR	NR	NR
Zhemgang BHU I	BHU I	0.94	0.75	0.75	0.67	0.82	1.87	0.19	0.83	0.79	0.34	1.22	1.85
	Trong Municipal (Raw)	1.03	1.33	0	1.21	2.22	2.51	3.11	1.02	0.99	1.73	7.96	5.18
	Trong Municipal (Treated)	0.13	0.01	0.15	1.29	0.27	1.2	1.15	1.46	1.04	0.02	0.31	0.53
	Zhemgang HSS	0.31	0	0	0.23	1.29	1.39	1.03	0.27	1.22	0.55	1.37	1.19
	Zhemgang LSS	0	0.13	0.2	0.09	0.05	2.01	2.55	1.25	0	0.29	0.19	0.09
	Zhemgang Town	0.21	0.17	0.22	0.78	1.06	0.18	0.06	0.23	0.93	0.8	0.94	0.66

	Unsafe water
	Safe water

Annex 2: Detailed monthly pH report from various sampling points of urban health centers

Dzongkhags	Sampling points	Jan	Feb	Mar	Apr	May	June	July	Aug	Sept	Oct	Nov	Dec
Bajo Hospital	Bajo HSS (Treated)	7	7	7.8	8.9	NR	8.7	7.6	7.8	8.45	NR	8.85	8
	Bajo Town	7	7.4	7.6	8.8	NR	7.6	7.9	7.8	8.47	NR	8.88	8.2
	Distribution Tank (Treated)	7.3	7.8	7.8	8.9	NR	7.8	7.8	8	8.5	NR	8.99	7
	Dratshang (Treated)	7	7.5	7.2	9	NR	7	7	8.1	8.51	NR	8.98	7
	Hospital Area (Treated)	7.84	7.8	7.4	8.5	NR	7.4	7.4	7.8	8.41	NR	8.99	8.4
	Tencholing Military Head Quarter (Treated)	7.22	7.4	7.5	8.9	NR	7.5	7.5	7.9	8.48	NR	8.97	8.4
	Wangdue LSS (Treated)	7.04	7.3	7.4	8.9	NR	7.4	7.4	7.8	8.45	NR	8.97	8.2
Bumthang Hospital	Chamkhar Town (Treated)	7	6.8	7	7	7.2	7.2	6.8	6.8	7	7.1	NR	7
	Dekiling (Treated)	7.2	7	7	6.8	6.8	6.8	7	7	6.8	6.9	NR	7
	Hospital Area (Treated)	7	6.8	6.9	7.2	6.8	6.8	7	6.8	7.1	7	NR	7
	Kurje Drupchhu (Not Treated)	6.8	5.8	5.8	7	6.8	6.8	7	6.9	6.8	6.8	NR	7.1
	Naspheh Treatment Plant (Treated)	7	7.4	7.4	6.8	7	7	7	7	7	7	NR	7
	Tamshing Dratshang (Not Treated)	7.2	6.9	7	6.8	7.2	7.2	7	7	7.1	7.1	NR	7
	Wangduechholing Lower Secondary School	NR	6.5	7.1	6.8	NR	NR	NR	7	NR	7.1	NR	7
Chhukha BHU I	Chhukha BHU	NR	6.8	6.8	NR	6.8	6.8	6.8	7.8	6.8	6.8	6.8	6.8
	Dzongsite Army Camp	NR	7.2	7.6	NR	7.6	7.6	7.8	7.6	7.8	7.6	6.8	7.4
	Market Area	NR	6.8	6.8	NR	6.8	6.8	6.8	7.6	6.8	6.8	6.8	6.8
	Wangchhu Middle secondary School	NR	6.8	6.8	NR	6.8	6.8	6.8	6.8	6.8	6.8	6.8	6.8
Dagana BHU I	BHU Kitchen	7.5	6.9	7.9	7.3	7.1	7.1	7.3	7.9	7.1	7.1	NR	NR
	Dagana HSS	7.2	7.2	7.3	7.2	6.8	7.4	7.8	7.4	7.7	7.3	NR	NR
	Dagana LSS	6.8	7.8	6.9	7.3	7.2	7.8	7.3	7.2	7.4	7.3	NR	NR
	Dratshang	6.7	7.1	7.4	6.8	6.9	7.1	8.1	8	7.4	7.9	NR	NR
	Town Area	7.8	7.4	7.3	6.8	7.9	7.9	8.2	8.3	7.4	6.9	NR	NR
Dagapela Hospital	Dagapela Dratshang	7.5	7.2	7.5	7.3	7.4	7.5	7.5	7.2	7.3	7.2	7	7.2
	Dagapela Hospital	7.4	7.5	7.3	7.4	7.2	7.3	7.6	7.5	6.9	6.9	7.2	7.4
	Dagapela MSS	7.5	7.4	7.1	7.6	7.3	7	6.8	7.4	7.5	7.4	7.6	7.3
	Dagapela Town	7.3	7.6	7.2	7.8	7.2	7.6	7.2	7	7	7.3	7.4	7.5

	RBA Dagapela	7.3	7.1	7.3	7.4	6.8	7.8	7	6.9	7	7.4	7.1	7.8
Damphu Hospital	Damphu Dratshang	8.2	7.4	8.78	8.12	7	8.3	7.8	7.5	8	8	7.5	8
	Damphu HSS	8.4	7.3	8.6	8.11	8.02	8.4	7.5	7.6	7.9	8	7.4	7.9
	Damphu LSS	8.1	7.9	8.72	8.14	6	8.4	7.6	7.5	8	7.8	7.4	8
	Damphu Town	8.4	8.3	8.8	8.43	6.8	8.4	7.5	8	8.2	7.8	7.5	8.1
	Hospital Area	8.4	6.7	8.65	8.19	7	8.4	7.8	7.4	8	7.6	7.4	8.1
	RBP Colony	8.2	7.6	8.57	8.4	6.8	8.3	7.6	7.8	8.1	8	7.5	8.4
Gedu Hospital	GCBS Boys's hostel(Kitchen)	6.8	6.7	6.8	6.8	6.8	6.8	6.8	6.8	6.8	6.8	6.8	6.8
	GCBS Girl's hostel(Kitchen)	6.8	6.8	6.8	6.8	6.8	6.8	6.8	6.8	6.8	6.8	6.8	6.8
	Gedu Hospital	6.8	6.8	6.8	6.8	6.8	6.8	6.8	6.8	6.8	6.8	6.8	6.8
	Gedu HSS	6.8	6.7	6.8	6.8	6.8	6.8	6.8	6.8	6.8	6.8	6.8	6.8
	Gedu Lapsakha town	6.8	6.8	6.7	6.8	6.8	6.8	6.8	6.8	6.8	6.8	6.8	6.8
	Gedu Police camp	6.8	6.8	6.8	6.8	6.8	6.8	6.8	6.8	6.8	6.8	6.8	6.8
	Gedu Zero	6.8	6.8	6.8	6.8	6.8	6.8	6.8	6.8	6.8	6.8	6.8	6.8
Gelephu CRRH	AWP colony (Treated)	7.8	7	6.8	7.4	7.4	7.8	7.6	8	7.8	8	7.6	8
	CRRH Kitchen Tap water (Treated)	7.4	7.6	6.8	7	7.6	7.4	7.4	7.4	7.4	7.4	7.2	7.2
	Fishery Area, Tap Water (Treated)	8	7.8	8.4	7.6	8	8	7.4	8	8	8	7.4	8
	Gelephu HHS (Treated)	7	7.2	6.4	6.8	8	7.8	7.6	7	7	7	7.4	7
	Gelephu LSS (Treated)	6.8	7	6	7.2	7.6	7.9	7.6	7	7.2	7.08	7.6	7
	Gelephu Town Tap water (Treated)	6.8	6.8	7.4	7.4	7.4	8	7.4	7.8	7.8	7.8	8	7.8
	Kuendrup HSS (Treated)	7	6.8	8	7.6	8	8	7.4	7.4	7.2	7.4	7	7.4
	Lodrai Jail RBP Camp Tap (Treated)	7.2	7.2	6.4	7.4	6.8	8	7.6	7.8	7.6	7.8	7.4	7.8
	Lodrai RBA Tap Water (Treated)	7.8	7.4	8.4	7.6	7.6	7.8	7.4	7	7	7	7.4	7
	Losel Gyatsho Academy (Treated)	7.8	7	7.2	7.2	7.2	8	7.6	8.4	8.2	8.4	7.8	8.2
	Maw Khola Reservoir Tank (Treated)	7	8	8	7.6	7.8	8.6	7.6	7.8	8	7.8	7.8	7.8
	Maw Khola Reservoir Tank, Pemathang (Treated)	8.4	7	8	7.4	7.8	8	7.4	8.2	8	8.2	7	8.2
	Pelrithang MSS (Treated)	6.8	6.8	7.8	7.4	7	8	7.6	8	8	8	8	8
	Pelrithang Reservoir Tank, Rai Dara (Treated)	8.6	6.8	7.8	7.6	7.4	7.8	7.6	7.8	7.8	7.8	7.6	7.8
	RBP Border Check-post (Treated)	6.8	7.2	6.2	7.2	7.6	8	7.8	7	7	7	7.4	7

	RBP Camp, Gelephu (Treated)	8	7	6.4	7.6	7.6	8	7.4	7.8	7.8	8.2	7.6	7.8
	Tali Dratshang (Treated)	6	7.8	7.8	8	7.4	8	8	8	7.8	8	7.8	8
Gidakom Hospital	Bjemina Primary School	6.5	7	6.5	6.5	6.5	6.5	6.5	6.5	7	6.5	6.5	6.5
	Bjemina Stone Quarry/SSSF	6.5	6.5	6.5	6.5	6.5	6.5	6.5	6.5	7	6.5	7	6.5
	Gidakom Hospital	6.5	6.5	6.5	6.5	6.5	6.5	6.5	6.5	7	6.5	6.5	6.5
	Khasadrapchu Middle Secondary School	6.5	7	6.5	6.5	6.5	6.5	6.5	6.5	7	6.5	7	6.5
Gomtu Hospital	Bazar water (Dong Khola)	6.9	7.3	NR	7.1	NR	6.9	6.9	NR	6.8	6.9	7.1	NR
	Gomtu Middle Secondary School	7.5	7.5	NR	7.2	NR	7.3	7.3	NR	7.3	7.1	6.9	NR
	Gomtu RBA	7.2	7.8	NR	6.8	NR	7.5	7.5	NR	6.9	6.8	6.8	NR
	Hospital Kitchen	7.1	6.8	NR	7.3	NR	7	7.6	NR	7.2	7.4	7	NR
	PCAL Main Gate	6.7	6.8	NR	6.9	NR	6.5	7.1	NR	7.2	7.2	6.8	NR
	RBP Office Tap	6.9	7.3	NR	6.8	NR	6.9	7.2	NR	7.1	7.3	7.1	NR
Haa Hospital	Bali BHU I	7.3	NR	7.2	NR	NR	7	NR	NR	NR	7	7.2	NR
	New Hospital Kitchen	7	NR	7	NR	NR	7.2	NR	NR	NR	7	7.2	NR
	RBP Camp	7.2	NR	7.2	NR	NR	7.2	NR	NR	NR	7	7	NR
	Sangay Restaurant	7.2	NR	7	NR	NR	7.2	NR	NR	NR	7.2	7.2	NR
	Ugyen Dorji HSS	7.2	NR	7.2	NR	NR	7	NR	NR	NR	7.2	7.2	NR
Kanglung BHU I	Jampeling HSS	7	NR	7	7	7	NR	NR	7.1	7	7	7	7
	Kanglung BHU	7	6.9	7	7.2	7.2	7.1	7	7	7	7	7	7
	Kanglung LSS	7.1	6.9	7	7	7	7	7	7	7	7	7	7
	Kanglung Shedra	7.1	NR	7.2	7	7	7.4	7	7.2	7	7	7	7.1
	Lower market	7.2	NR	7.2	7.2	7.2	7.4	7.2	7.2	7	7	7	7.2
	Sherubtse college	7.1	7	7.4	7	7	NR	6.8	7.3	7	7	7	7.1
	Upper market	7	NR	7.2	7.2	7.2	7.4	7.2	7	7.2	7.1	7.1	7.1
Lhuentse Hospital	BPC	6.8	6.9	6.8	6.8	6.9	6.9	6.5	6.5	6.2	6.8	7	6.9
	Dzong Area	7	7.4	7.2	7.4	7.2	7.2	7	6.6	6	6.4	7.4	7.2
	Hospital Area	6.8	7	6.8	6.8	6.8	6.9	6.9	6.9	7	6.7	7.1	6.8
	Lhuentse HSS	6.9	6.9	6.9	6.9	6.9	6.8	6.5	7.3	6.8	6.3	6.9	6.9
	Lhuentse PS	6.9	6.8	6.9	7	7	7	6.7	6.3	6.3	6.9	7	6.9
	Phaling Bazer	6.9	7	6.8	6.8	6.8	6.9	6.7	6	6.4	6.3	7	6.8
Monggar ERRH	Hospital Main Distribution Tank	6.5	7	NR	NR	NR	NR	NR	7	7.5	NR	7	7
	Mongar Dratshang	7	7	NR	NR	NR	NR	NR	6.5	7	NR	7	7
	Mongar HSS	6.5	6.5	NR	NR	NR	NR	NR	7	7.5	NR	6.5	7.5

	Mongar LSS	6.5	7.5	NR	NR	NR	NR	NR	7	7.5	NR	7	6.5
	Mongar Town	7	6.5	NR	NR	NR	NR	NR	7.5	7.5	NR	7	7
	Police Camp	6	6.5	NR	NR	NR	NR	NR	7	7	NR	7	7
	Trailing	7	7	NR	NR	NR	NR	NR	6.5	7	NR	7	7.5
Nganglam BHU I	Nganglam BHU	NR	NR	NR	NR	NR	NR	NR	NR	NR	NR	NR	NR
	Nganglam Higher Secondary School	NR	NR	NR	NR	NR	NR	NR	NR	NR	NR	NR	NR
	Nganglam Lower Secondary School	NR	NR	NR	NR	NR	NR	NR	NR	NR	NR	NR	NR
	Nganglam Town A	NR	NR	NR	NR	NR	NR	NR	NR	NR	NR	NR	NR
	Nganglam Town B (Near BHU)	NR	NR	NR	NR	NR	NR	NR	NR	NR	NR	NR	NR
Panbang BHU I	Panbang Bazaar	6.5	6.8	6.8	6	NR	NR	6.8	6.8	6.8	7.2	NR	NR
	Panbang BHU	6.6	6.8	6.8	6.8	NR	NR	6.8	6.6	6.6	6.9	NR	NR
	Panbang Primary School (Tap water)	6.7	6.8	6.8	7.2	NR	NR	6.8	6.8	6.8	6.7	NR	NR
	Sonamthang Dratshang (Tap water)	6.6	6.8	7.2	6.6	NR	NR	7	6.8	6.6	7.1	NR	NR
	Thinleygang Central School	6.8	6.6	7	6.4	NR	NR	7.2	6.2	6.6	7.4	NR	NR
Paro Hospital	Gauwpay MSS	7.8	7.5	7.2	7.4	7.6	NR	7.6	NR	7.2	NR	7	7.2
	Hospital Kitchen	7.4	7.4	7.4	6.8	7.6	NR	7.4	NR	7.2	NR	7.4	7.4
	Khangkhu Middle Secondary School	7.2	7.2	NR	7.6	7.8	NR	7.6	NR	7.4	NR	7	7
	NIE Tapping Point	7.4	7.3	7.4	7	7.6	NR	7.6	NR	7.4	NR	7.6	7.4
	RBP Area	7.4	7.6	7	7.4	7.6	NR	7.5	NR	7.6	NR	7.6	7.4
	Rinpung Dzong tap Water	7.2	7.4	7.2	7	7.2	NR	7.4	NR	7.2	NR	7	7.2
	Tshoungdu Town Last Tapping Point	7.4	7.4	7.4	7.4	7.4	NR	7.4	NR	NR	NR	7.4	7.4
	Wuchu Lower Secondary School	NR	7.2	7	7	7.6	NR	7.4	NR	7.4	NR	7.4	7.2
Pemagatshel Hospital	Dratshang	NR	NR	NR	NR	NR	NR	7.4	7.8	NR	7.6	NR	NR
	Forest Colony	NR	NR	NR	NR	NR	NR	7.4	7.2	NR	7.8	NR	NR
	Hospital Area	NR	NR	NR	NR	NR	NR	7.4	7.6	NR	7.6	NR	NR
	Pemagatshel MSS	NR	NR	NR	NR	NR	NR	7.6	7.8	NR	7.8	NR	NR
	RBP Area	NR	NR	NR	NR	NR	NR	7.4	7.2	NR	7.6	NR	NR
	Town Area	NR	NR	NR	NR	NR	NR	7.4	7.6	NR	7.8	NR	NR

Phuentsholing Hospital	College of Science and Technology	6.9	6.9	7.1	7.2	7	7	NR	NR	7.2	7.1	NR	NR
	Hospital Kitchen tap(Treated)	7.2	7	7.2	7	6.8	7	NR	NR	7.2	7.2	NR	NR
	Norbu Academy (Kharbandi)	7	7.2	7.2	7	7.1	7.1	NR	NR	7.2	7.2	NR	NR
	Phuentsholing HSS (Treated)	6.9	7.2	7.1	7.1	7.1	7.1	NR	NR	7.1	7.3	NR	NR
	Phuentsholing LSS(Treated)	7	6.9	7.1	7	7	7	NR	NR	7.3	7.2	NR	NR
	Phuentsholing MSS(Treated)	7.1	7	7.4	7	7.1	7	NR	NR	7	7	NR	NR
	RBP Colony	7.1	6.7	7.1	7.2	7	7.2	NR	NR	7.3	7.3	NR	NR
	Sonamgang Middle Sec School	7.1	7.1	7.2	7	7	7	NR	NR	7.3	7.2	NR	NR
	Town Area (Zangdopelri)	6.8	7.1	7.2	7	7	7.1	NR	NR	7.1	7.2	NR	NR
Punakha Hospital	Khuruthang MSS	7.9	7.8	7.6	7.9	7.2	7.8	7.5	7.3	7.3	7.3	7.6	7.3
	Khuruthang Town	7.6	7.6	7.2	7.6	7.1	7.7	7.5	7.6	7.6	7.6	7.6	7.5
	Khuruthang VTI	7.8	7.8	7.3	7.8	7.6	7.8	7.41	7.3	7.6	7.3	7.3	7.6
	Punakha Centre School	7.6	7.8	7.3	7.8	7.6	7.6	7.2	7.6	7.9	7.6	7.6	7.6
	Punakha Hospital	7.9	7.9	6.9	7.9	6.9	7.6	7.8	7.6	7.6	7.3	7.6	7.6
	Ugyen Academy HSS	7.8	7.6	7.2	7.8	7.1	7.8	7.3	7.9	7.6	7.6	7.6	7.6
Riserboo Hospital	Hospital Kitchen	6.8	6.8	7.4	7.4	7.4	7.4	7.4	7.4	7.4	NR	7.5	7.6
	Riserboo Town	6.8	7	7	6.8	7.4	7.4	7.4	7.4	7.4	NR	7.2	7.2
	Staff Quarter (Canteen)	7	6.8	7	7	7	6.8	6.8	7.4	7.4	NR	7.5	7.5
	Tashitse Higher Secondary School	NR	NR	NR	NR	NR	NR	NR	NR	NR	NR	7.2	7.2
	Tshozor	7	7	6.8	7	7	7.8	7	7.4	7.4	NR	7.2	7.2
	Wamrong Lower Secondary School	NR	NR	NR	NR	NR	NR	NR	NR	NR	NR	7.2	7.2
	Wamrong Town	6.8	7.4	7	6.8	6.8	6.8	6.8	7.4	7.4	NR	7.2	7.2
Royal Centre for Disease Control	BPT R1 Tank (Treated)	6.8	7	6.8	NR	8.09	NR	8.05	7.83	8.04	7.79	7.82	6.91
	Changjiji Colony Reservoir Tank (Treated)	6.8	6.8	6.8	6.8	7.19	6.8	7.15	7.14	7.39	7.33	7.52	6.91
	Jungshina Treatment Plant (Treated)	7.2	7.2	6.8	8.2	7.38	7.85	7.95	7.4	8.06	7.25	6.91	7.56
	Jushina Treatment Plant Sourc(Not Treated)	6.8	6.8	6.8	6.8	7.32	7.95	7.7	7.63	7.57	7.47	6.91	7.47
	Motithang Treatment Plant (Treated)	6.8	7	7	7.2	8.17	7.79	8.07	7.31	7.88	7.65	7.8	6.91

	Motithang Treatment Plant Source (Not Treated)	6.8	6.8	6.8	6.8	8.08	7.99	7.81	7.9	7.86	7.66	6.91	7.59
	Reservoir Tank near BCCI office (Treated)	6.8	7	7.2	8	7.59	8.26	7.74	7.55	7.7	7.31	6.91	6.91
	Reservoir Tank near Swimming pool (Treated)	7.2	6.8	6.8	7.2	7.46	7.2	7.69	7.7	8.9	8.1	6.91	6.91
	Tank above Hospital colony (Treated)	7	7	7	7.2	8.09	7	7.85	7.87	7.6	7.57	7.7	7.62
	Tank above NPPF colony (Treated)	7.2	7	7.2	6.8	8.08	8.82	7.84	7.82	7.94	6.91	7.89	6.91
	Three Tank Lower Motithang (Treated)	7	7	7.2	7.2	7.84	8.13	8.45	7.92	8.2	7.69	7.98	7.55
Samdrup Jongkhar Hospital	Bazar	7.3	7.2	7.34	7	6.9	7	NR	NR	NR	7	NR	NR
	Dechen Primary School	7.1	7.35	7.24	7.1	7.6	7.3	NR	NR	NR	6.9	NR	NR
	Forest Colony	7.24	7.51	7.41	7.3	7.1	7.3	NR	NR	NR	6.9	NR	NR
	Hospital Colony	7.18	7.34	7.28	7.7	7.5	7.5	NR	NR	NR	7	NR	NR
	NPPF Colony	7.2	7.24	7.21	7.6	7.5	7.4	NR	NR	NR	6.9	NR	NR
	RBP Colony	7.3	7.21	7.19	7.7	7.4	7.5	NR	NR	NR	6.9	NR	NR
	Samdrupjongkhar Middle Secondary School	7.32	7.31	7.28	7.5	7.6	7.8	NR	NR	NR	7	NR	NR
Samdrupchholing BHU I	Hospital Tap	7.4	7.4	7.6	7.4	7	7	7	7.4	7	7	7	7.2
	Karmaling HSS	7	7.4	7.4	7	7.4	7	7.2	7	7.2	7	7	7.2
	NHDCL	7.2	7.6	7.6	7.8	7.6	7	7	7.6	7	7.6	7	7
	Phuentshothang MSS	7.4	7.2	7.2	7	6.8	7	6.8	6.8	6.8	7	6.8	7.2
	Town Area	7.6	6.8	6.8	6.8	6.8	6.8	6.8	7.6	6.8	6.8	6.8	7
Samtse Hospital	Main Town Tap(Treated)	7.4	7.6	7.6	7.2	7.4	6.8	7.2	7	6.81	7	6.81	7.4
	RBA Camp(Treated)	7.4	7.6	7.6	7.4	7.4	6.8	7.2	7	7	7.2	6.9	7.4
	RBP Camp(Treated)	7.4	7.6	7.6	7.4	7.4	6.8	7.4	7	6.8	7.2	6.9	7.4
	Samtse College of Education(Treated)	7.4	7.6	7.6	7.2	7.4	7.4	7.4	7	7	7	6.8	7.4
	Samtse Dratshang(Treated)	7.4	7.6	7.6	7.2	7.4	7	7.4	7	7	7	6.8	7.4
	Samtse Hospital(Treated)	7.4	7.6	7.6	7.6	7.4	6.8	7.4	7	6.8	7	6.8	7.4
	Samtse HSS(Treated)	7.4	7.6	7.6	7.2	7.4	6.8	7.4	7	7.4	7.4	6.8	7.4

	Samtse LSS(Treated)	7.4	7.4	7.6	7.4	7.4	6.8	7.2	7	6.4	7.2	6.8	7.4
Sarpang Hospital	Military Camp RBP	NR	NR	NR	7.4	NR	7	NR	NR	NR	NR	NR	NR
	Sarpang Dratshang	NR	NR	NR	7.3	NR	7.2	NR	NR	NR	NR	NR	NR
	Sarpang Hospital	NR	NR	NR	7.3	NR	7	NR	NR	NR	NR	NR	NR
	Sarpang HSS	NR	NR	NR	7.5	NR	7.3	NR	NR	NR	NR	NR	NR
	Sarpang L S S	NR	NR	NR	7.4	NR	7.2	NR	NR	NR	NR	NR	NR
	Water Reservoir Tank	NR	NR	NR	7.4	NR	7	NR	NR	NR	NR	NR	NR
Sibsoo BHU I	Dratshang Belbotey	7	7	7	NR	7	7	7	7	7	7	NR	7
	Hospital Kitchen Tap	7	7	7	NR	7	7	7	7	7	7	NR	7
	Peljorling Higher Secondary School	7	7	7	NR	7	7	7	7	7	7	NR	7
	Peljorling Lower Secondary School	7	7	7	NR	7	7	7	7	7	7	NR	7
	RBA Belbotey	7	7	7	NR	7	7	7	7	7	7	NR	7
	Tashicholing Town	7	7	7	NR	7	7	7	7	7	7	NR	7
Trashi Yangtse Hospital	Barzam Chu/Bhimkhar	7.4	7.4	7.2	7	7	7.2	7.2	7.4	6.2	6.2	7.6	7.6
	Byaling HSS	NR	7	7.1	7.2	7	7	7	8	7	6.4	7.4	8
	Dratshang	7.2	7.4	7.1	7.4	6.8	7.4	7.4	8	6.3	6.2	7.4	6.5
	Hospital Area	7.4	7.4	7.1	6.8	6.9	6.8	7.2	7.4	6.2	6.2	7.6	7
	Tashiyangtse LSS	NR	7.2	7.2	7.2	7.1	NR			6.4	6.4	7	7
	Town Area	7.2	7	7.2	6.8	7.3	6.8	6.8	7.2	7	6	7.6	6.8
	Zorigchuksum	7.4	7.6	7.3	7.2	7.3	7.2	7.2	7.6	6.5	6.4	7.2	6.8
Trashigang Hospital	Hospital Kitchen Tap	NR	6.8	6.8	6.8	6.8	6.8	NR	NR	NR	6.8	NR	NR
	Main Distribution Tank	NR	6.8	6.8	6.8	6.8	6.8	NR	NR	NR	6.8	NR	NR
	Town Area	NR	6.8	6.8	6.8	6.8	6.6	NR	NR	NR	6.8	NR	NR
	Trashigang MSS	NR	6.8	6.8	7	6.8	6.4	NR	NR	NR	6.8	NR	NR
Trongsa Hospital	Hospital Staff Quarter	6.8	6.8	6.8	6.8	6.8	6.8	6.8	6.8	7	6.8	6.8	6.8
	PWD Colony	7	6.8	6.8	6.8	6.8	6.8	6.8	6.8	7	6.8	6.8	6.8
	Sherabling HSS	7.2	6.8	6.8	6.8	6.8	6.8	6.8	7	7	7	6.8	7
	Tongsa LSS	6.4	6.8	6.8	6.8	6.8	6.8	6.8	6.8	7	7	7	6.8
	Trongsa Dratshang	7	6.8	6.8	6.8	6.8	6.8	6.8	7	7	6.8	6.8	6.8
	Trongsa Hospital	6.8	6.8	6.8	6.8	6.8	6.8	6.8	7	7	6.8	6.8	6.8
	Trongsa Town	7	6.8	6.8	6.8	6.8	6.8	6.8	6.8	7	6.8	6.8	7

Tsimalakha Hospital	CHPC Colony	7	7	7	7	7.1	7.1	7	7.2	7.2	7	NR	7
	Chukha HSS	6.2	6	7	6.5	7.5	6.5	6.5	7	6.5	7	NR	6.5
	Hospital Area	7	7	7	7	7	7	7	7.3	7	7	NR	7
	Tsimakha Primary School	7	6.5	7	6.3	7.5	6.3	6.5	7.1	0	7.2	NR	7
	Tsimalakha Central School Junior Campus	6.5	6.5	7	7	6.9	7	7	7	7	7	NR	7
	Tsimalakha Town	7	7	7	7	7.2	7.2	7	7.1	7	7	NR	7
	Tsimasham Dratshang	6.5	6.3	7	6.5	7.2	6	6	7.1	6	6.5	NR	6.5
Yebilaptsa Hospital	Hospital Area	6.5	6.5	NR	NR	NR	NR	NR	NR	NR	NR	NR	NR
	Tingtibi PS	6.5	6.5	NR	NR	NR	NR	NR	NR	NR	NR	NR	NR
	Tingtibi Town	6.5	6.5	NR	NR	NR	NR	NR	NR	NR	NR	NR	NR
	Tingtibi Town Reservoir Tank	6.5	6.5	NR	NR	NR	NR	NR	NR	NR	NR	NR	NR
	Yebilaptsa MSS	6.5	6.5	NR	NR	NR	NR	NR	NR	NR	NR	NR	NR
Zhemgang BHU I	BHU I	7	7	7	7	7	7	7	7	7	7	7	7
	Trong Municipal (Raw)	7	7	7	7	7	7	7	7	7	7	7	7
	Trong Municipal (Treated)	7	7	7	7	7	7	7	7	7	7	7	7
	Zhemgang HSS	7	7	7	7	7	7	7	7	7	7	7	7
	Zhemgang LSS	7	7	7	7	7	7	7	7	7	7	7	7
	Zhemgang Town	7	7	7	7	7	7	7	7	7	7	7	7

	Safe water
NR	Not reported