

# Weekly Report of COVID-19 Integrated ILI and SARI Surveillance

Royal Centre for Disease Control  
Ministry of Health

Wangchutaba, Serbithang, Thimphu, Bhutan.

Post Box No. 667, Tele: +975-02-350577/78

Website: www.rcdc.gov.bt, Email: rcdc@health.gov.bt

## Weekly COVID-19 Integrated Flu Surveillance Report for week 45 (Nov 6–12, 2023)

- A total of 117 ILI and SARI specimens were received and detected 39.3% (46/117) influenza positives by Multiplex PCR (SC2). Influenza positivity increased by 9.5% compared to the previous week (29.8%) (Figure 1). The affected age groups for Influenza were 5–14 years (37.0%), followed by 15–29 years (26.1%) (Figure 2).
- All 7 ILI sentinel Hospitals and 11 SARI sentinel hospitals have reported for the week (Figure 5, Table 3).

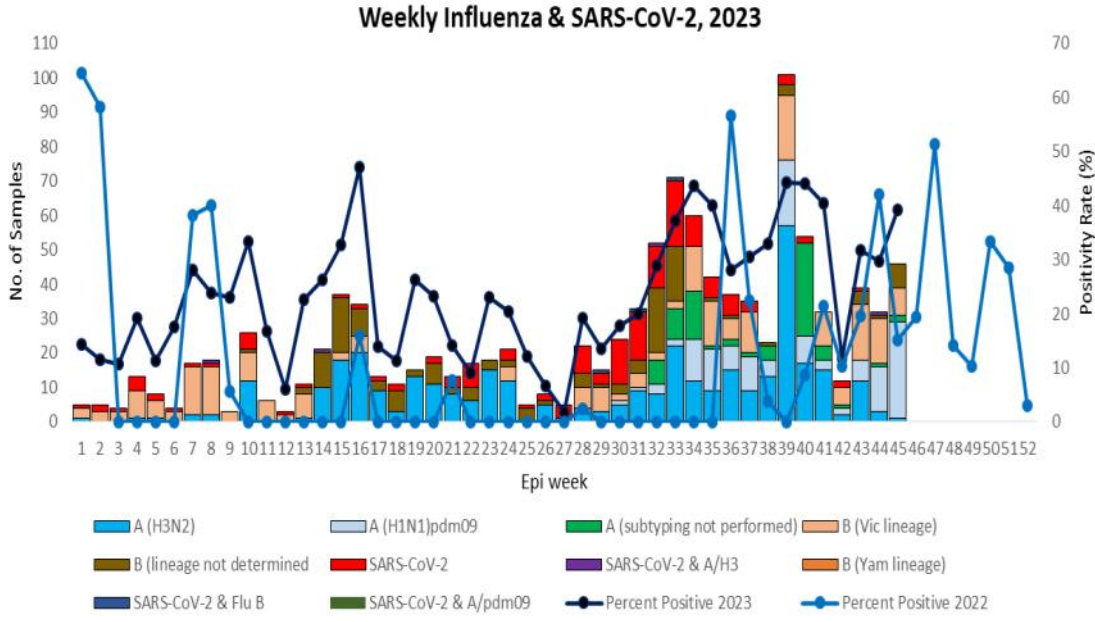


Table 1: Acute respiratory infection (ARI) outbreak status for week 45

Sl. No.	Place/Location	No. of ARI cases Reported	Outbreak Type	Remarks
1	Khomshar Primary School, Zhemgang	56	Suspected	

- One ARI outbreak from Khomshar Primary school with a total of 56 cases were reported during the week 45 (Table 1).

Figure 1: Weekly Influenza subtypes and SARS-CoV-2 through ILI and SARI Sentinel Surveillance

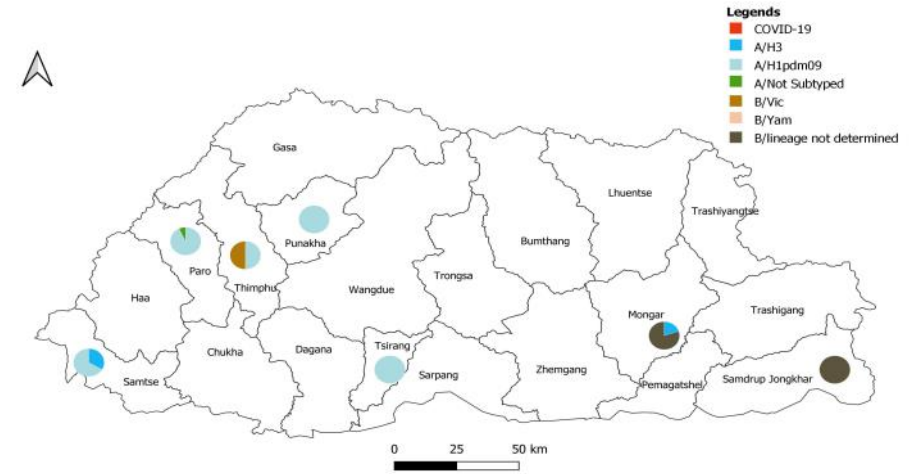
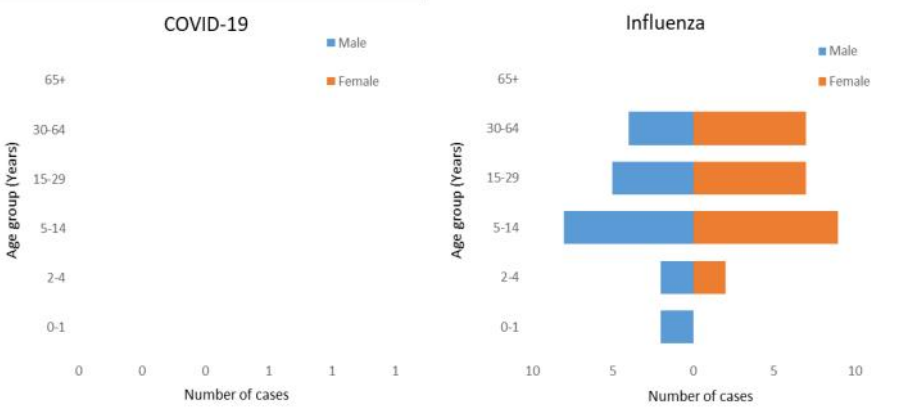


Figure 2: Influenza & SARS-CoV-2 positives by age group and gender

Figure 3: Influenza subtype & SARS-CoV-2 positive percent by District

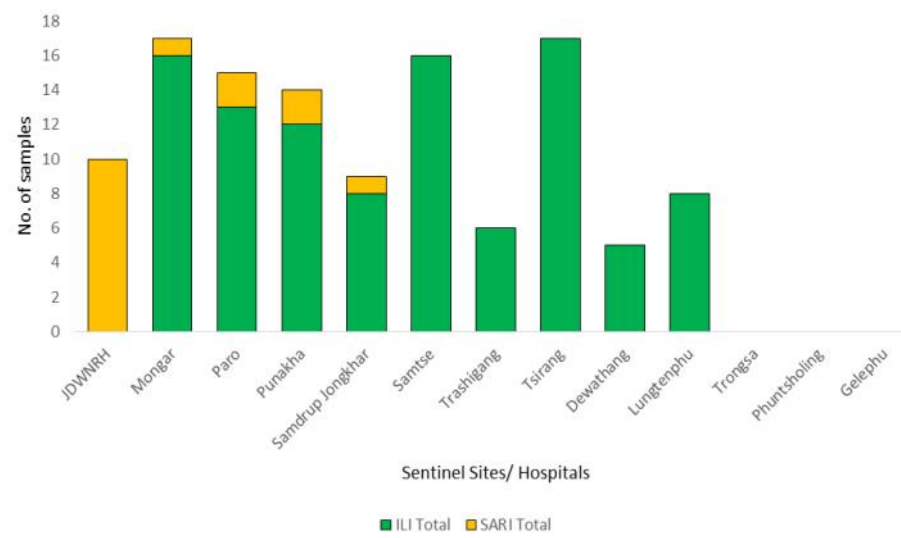


Figure 4: ILI and SARI Specimens status for Testing week 45, 2023

Table 2: Influenza subtypes and SARS-CoV-2 in Testing week 45, 2023

Sentinel Sites/Hospitals	ILI					SARI					Grand Total		
	A/Not A/H3	A/ H1pdm09	B/lineage not determined	B/Vic	ILI Neg	A/ H1pdm09	A/Not subtyped	B/Vic	SARI Neg				
JDWNRH						1		1	8	10	10		
Monggar	1		4		11				1	1	17		
Paro		12			1	1	1			2	15		
Punakha		5		3	4				2	2	14		
Samdrup Jongkhar			2		6				1	1	9		
Samtse	1		2		13						16		
Trashigang					6						6		
Tsirang		7			10						17		
Dewathang			1		4						5		
Lungtenphu				4	4						8		
Trongsa													
Phuntsholing													
Gelephu													
<b>Grand Total</b>	<b>1</b>	<b>1</b>	<b>26</b>	<b>7</b>	<b>7</b>	<b>59</b>	<b>101</b>	<b>2</b>	<b>1</b>	<b>1</b>	<b>12</b>	<b>16</b>	<b>117</b>

Table 3: ILI and SARI cases reporting status for week 45, 2023

Year	Week	Site	Department	SARI	IPD	Year	Week	Site	ILI	OPD
2023	45	Gelephu CRRH	Pediatric Ward	3	4	2023	45	Paro Hospital	46	2814
2023	45	Gelephu CRRH	ICU	0	3	2023	45	Punakha Hospital	14	1270
2023	45	Gelephu CRRH	Medical Ward	2	12	2023	45	Samdrup Jongkhar Hospital	40	580
2023	45	JDWNRH	Pediatric Ward	Not Reported		2023	45	Samtse Hospital	20	1548
2023	45	JDWNRH	Medical Extension Ward	Not Reported		2023	45	Trashigang Hospital	2	703
2023	45	JDWNRH	Pediatric ICU	0	5	2023	45	Trongsa Hospital	19	408
2023	45	JDWNRH	Cabin	Not Reported		2023	45	Tsirang Hospital	20	1018
2023	45	JDWNRH	Medical Ward	2	22					
2023	45	JDWNRH	ICU	0	9					
2023	45	JDWNRH	Emergency	Not Reported						
2023	45	Monggar ERRH	ICU	0	2					
2023	45	Monggar ERRH	Medical Ward	0	17					
2023	45	Monggar ERRH	Pediatric Ward	0	8					
2023	45	Paro Hospital	General Ward	2	28					
2023	45	Phuntsholing Hospital	Medical Ward	4	27					
2023	45	Punakha Hospital	General Ward	2	24					
2023	45	Samdrup Jongkhar Hospital	General Ward	0	7					
2023	45	Samtse Hospital	General Ward	2	17					
2023	45	Trashigang Hospital	General Ward	0	27					
2023	45	Trongsa Hospital	General Ward	0	6					
2023	45	Tsirang Hospital	General Ward	7	21					
		<b>Total</b>		<b>24</b>	<b>239</b>					

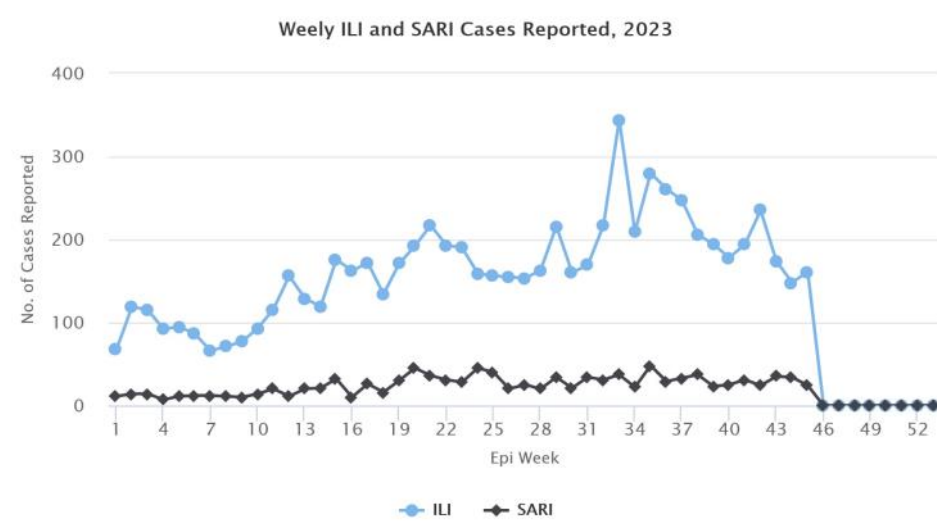


Figure 5: Weekly trend of ILI and SARI cases reported by Sentinel Hospitals