

Weekly Report of COVID-19 Integrated ILI and SARI Surveillance

Royal Centre for Disease Control

Ministry of Health

Wangchutaba, Serbithang, Thimphu, Bhutan.

Post Box No. 667, Tele: +975-02-350577/78

Website: www.rcdc.gov.bt, Email: rcdc@health.gov.bt

Weekly COVID-19 Integrated Flu Surveillance Report for week 47 (Nov 20–26, 2023)

- A total of 128 ILI and SARI specimens including outbreak samples were received and detected 32.0% (41/128) influenza positives by Multiplex PCR (SC2). Influenza positivity decreased by 11.3% compared to the previous week (43.4%) (Figure 1). The affected age groups for Influenza were 5–14 years (51.2%), followed by 15–29 years (19.5%) (Figure 2).
- All 7 ILI and 11 SARI sentinel Hospitals have reported for the week, however, few units of the ward have not reported (Figure 5, Table 3).

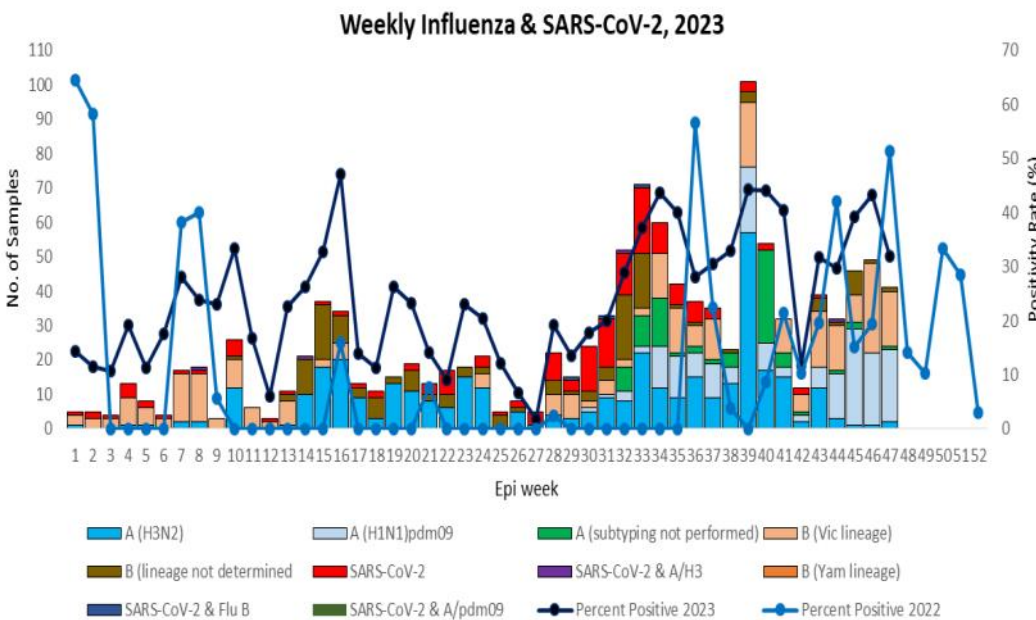


Figure 1: Weekly Influenza subtypes and SARS-CoV-2 through ILI and SARI Sentinel Surveillance

Table 1: Acute respiratory infection (ARI) outbreak status for week 47

Sl. No.	Place/Location	No. of ARI cases Reported	Outbreak Type	Remarks

- There was no ARI outbreak reported during the week 47 (Table 1).

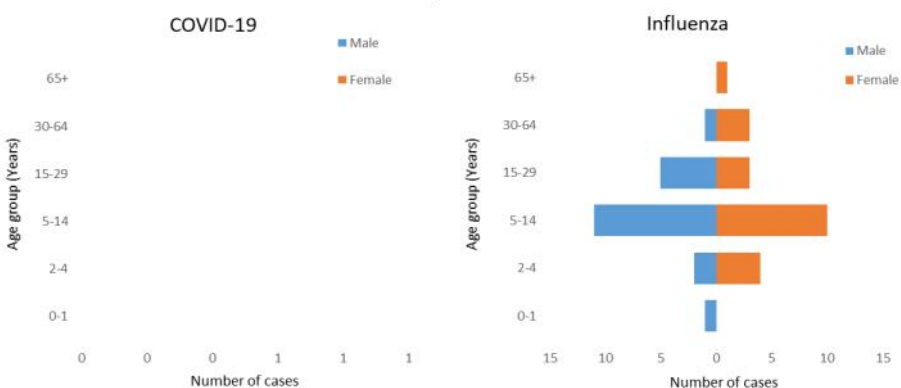


Figure 2: Influenza & SARS-CoV-2 positives by age group and gender

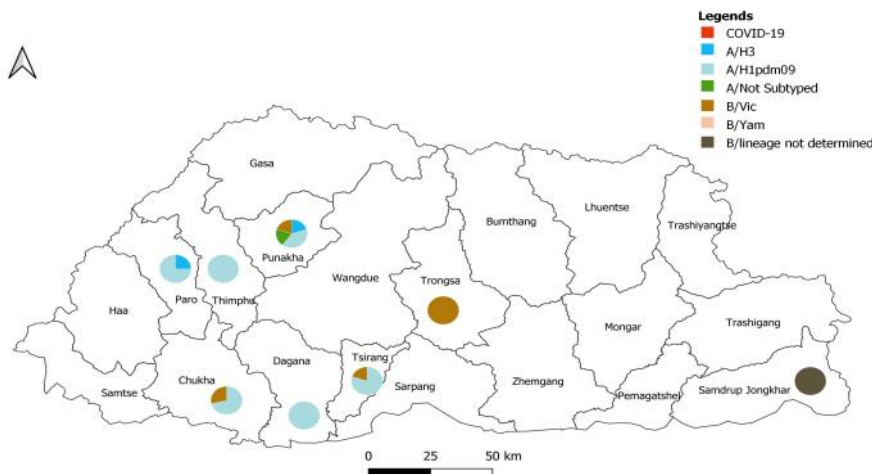


Figure 3: Influenza subtype & SARS-CoV-2 positive percent by District

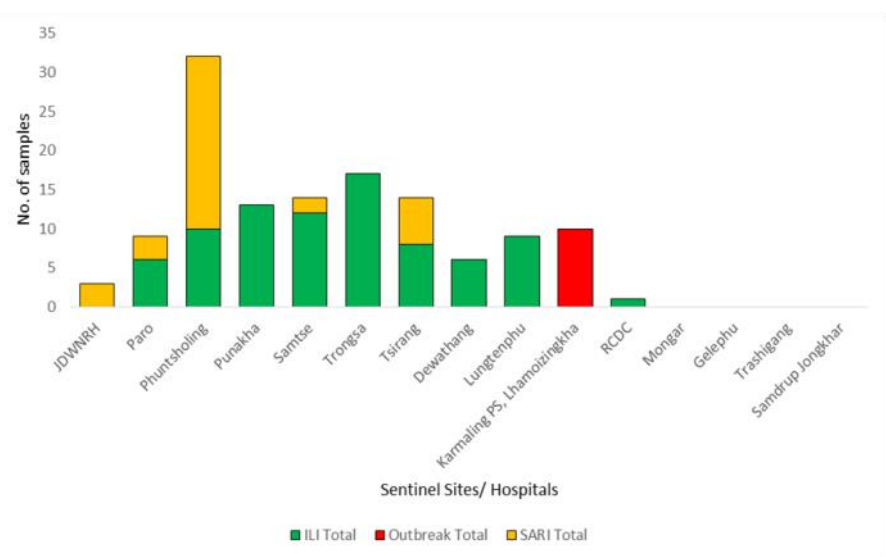


Figure 4: ILI and SARI Specimens status for Testing week 47, 2023

Table 2: Influenza subtypes and SARS-CoV-2 in Testing week 47, 2023

Sentinel Sites/Hospitals	ILI				SARI			Outbreak			Grand Total				
	A/H1pdm09	A/Not Subtyped	B/Vic determined	B/lineage not determined	ILI Neg	A/H1pdm09	A/H3	SARI Neg	A/H1pdm09	Outbreak Neg		Outbreak Total			
JDWNRH								3	3			3			
Paro	3				3	6	1	2	3			9			
Phuntsholing	3		2		5	10	2	20	22			32			
Punakha	2	1	1	1	8	13						13			
Samtse					12	12		2	2			14			
Trongsa				12	5	17						17			
Tsirang	3		1		4	8	1	5	6			14			
Dewathang				1	5	6						6			
Lungtenphu					9	9						9			
Karmaling PS, Lhamoizingkha										6	4	10			
RCDC	1					1						1			
Mongar															
Gelephu															
Trashigang															
Samdrup Jongkhar															
Grand Total	12	1	1	16	1	51	82	3	1	32	36	6	4	10	128

Table 3: ILI and SARI cases reporting status for week 47, 2023

Year	Week	Site	Department	SARI	IPD	Year	Week	Site	ILI	OPD
2023	47	Gelephu CRRH	Pediatric Ward	5	5	2023	47	Paro Hospital	47	2707
2023	47	Gelephu CRRH	ICU	0	4	2023	47	Punakha Hospital	24	321
2023	47	Gelephu CRRH	Medical Ward	3	13	2023	47	Samdrup Jongkhar Hospital	30	654
2023	47	JDWNRH	Pediatric Ward	Not Reported		2023	47	Samtse Hospital	10	986
2023	47	JDWNRH	Medical Extension Ward	Not Reported		2023	47	Trashigang Hospital	1	377
2023	47	JDWNRH	Pediatric ICU	0	5	2023	47	Trongsa Hospital	35	489
2023	47	JDWNRH	Cabin	Not Reported		2023	47	Tsirang Hospital	9	958
2023	47	JDWNRH	Medical Ward	5	21			Total	156	6492
2023	47	JDWNRH	ICU	0	8					
2023	47	JDWNRH	Emergency	Not Reported						
2023	47	Monggar ERRH	ICU	Not Reported						
2023	47	Monggar ERRH	Medical Ward	0	4					
2023	47	Monggar ERRH	Pediatric Ward	0	5					
2023	47	Paro Hospital	General Ward	3	30					
2023	47	Phuntsholing Hospital	Medical Ward	1	21					
2023	47	Punakha Hospital	General Ward	2	27					
2023	47	Samdrup Jongkhar Hospital	General Ward	0	10					
2023	47	Samtse Hospital	General Ward	5	18					
2023	47	Trashigang Hospital	General Ward	0	30					
2023	47	Trongsa Hospital	General Ward	1	3					
2023	47	Tsirang Hospital	General Ward	3	16					
		Total		28	220					

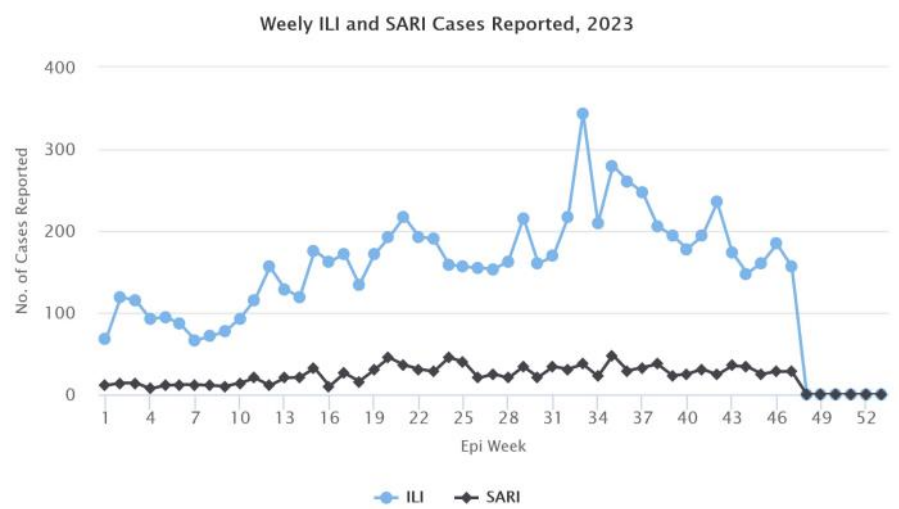


Figure 5: Weekly trend of ILI and SARI cases reported by Sentinel Hospitals