

# MONTHLY DISEASES EPIDEMIOLOGY REPORT

## Royal Centre for Disease Control

DoPH, Ministry of Health

Wangchutaba, Serbithang, Thimphu, Bhutan.

Post Box No. 667, Tele: +975-02-350577/78, Fax: +975-2-332464

web: <http://www.rcdc.gov.bt>, E Mail: [rcdc.bhutan@gmail.com](mailto:rcdc.bhutan@gmail.com)



October (Epidemiological Weeks 40-43), 2023

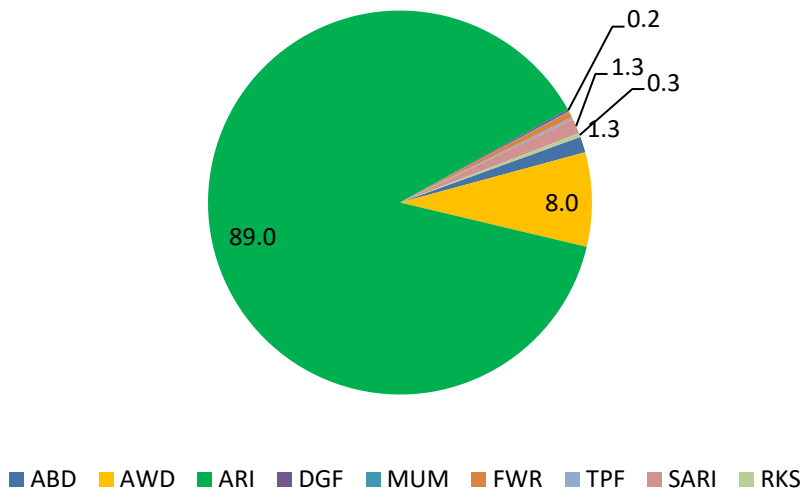
### 1. Highlights on NEWARS reporting

#### Immediate and Events reports:

- a) Two suspected cases of Bacterial Meningitis were reported from JDWNRH,
- b) Two suspected cases of Pertussis were reported: one from JDWNRH and one from MRRH
- c) A case of suspected Acute Flaccid Paralysis was reported from JDWNRH
- d) Total of 25 samples of suspected Measles/Rubella cases were tested, none of the samples tested positive for Measles/Rubella IgM.
- e) Twelve disease outbreaks were reported during the month of October. Among them four were the outbreak of Influenza-like Illness, three of conjunctivitis, three of Glossitis and a Chicken pox. All most all outbreak were reported from Schools. All outbreaks were responded to by the respective health centers and the District Health Rapid Response Team (DHRRT) upon the recommendations of RCDC.

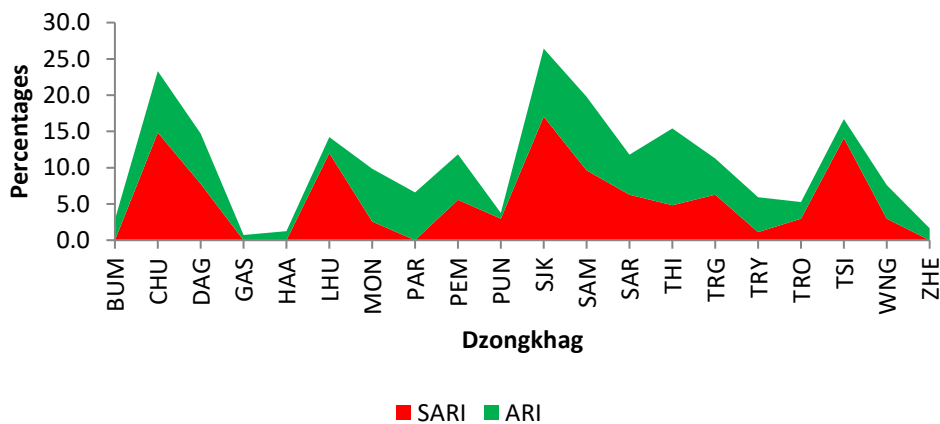
## 2. Status of Notifiable Diseases/Syndromes reported:

A total of 27309 cases of notifiable diseases were reported in the weekly indicator-based surveillance system, among the 11 weekly notifiable diseases, Acute Respiratory Infection (ARI) (89.0%) followed by Acute Watery Diarrhea (AWD) (8.0%) topped the list (**Figure 1**).



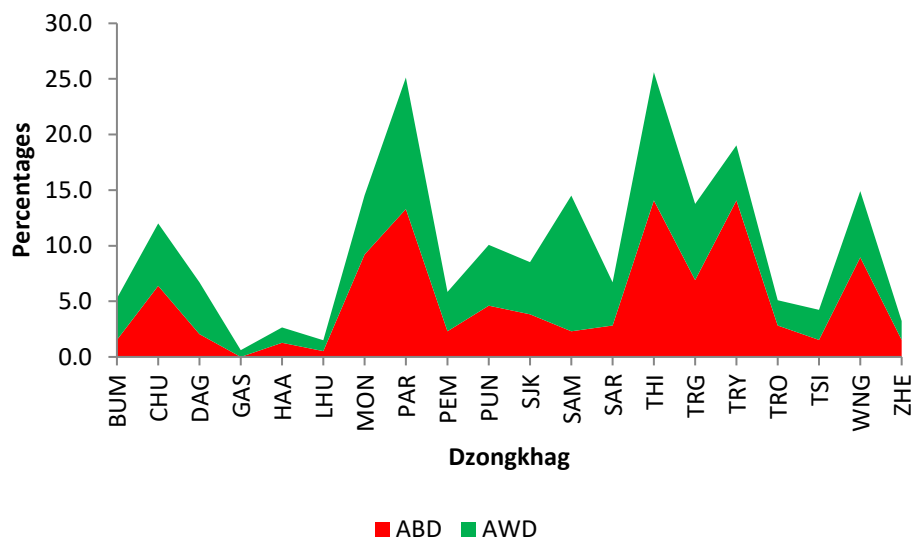
**Figure 1:** Proportion of notifiable diseases reported in NEWARS

A total of 24452 cases of respiratory illness were reported: among Dzongkhags, Chhukha and Samdrupjongkhar had reported the highest percentage of both ARI and SARI cases (**Figure 2**)



**Figure 2:** Proportion of ARI and SARI reported by Dzongkhags

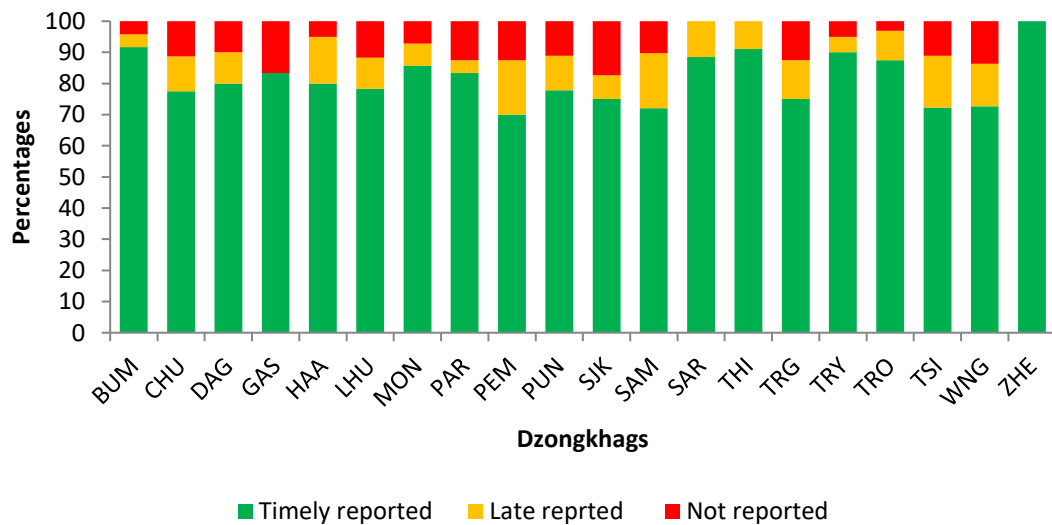
Similarly, 1998 cases of diarrheal diseases were reported, among the Dzongkhag Thimphu and Paro reported the highest percentage of both AWD and ABD (**Figure 3**).



**Figure 3:** Proportion of ABD and AWD reported by Dzongkhag

### 3. Status of Notifiable Diseases/Syndromes for the month

Of the total weekly report received in the system, 82.0% were reported in time, 10.0% were lately reported, and the rest (8.0%) of weekly reports were not received (**Figure 4**).



**Figure 4:** Reporting status of notifiable diseases by Dzongkhags