

# MONTHLY DISEASES EPIDEMIOLOGY REPORT

## Royal Centre for Disease Control

DoPH, Ministry of Health

Wangchutaba, Serbithang, Thimphu, Bhutan.

Post Box No. 667, Tele: +975-02-350577/78, Fax: +975-2-332464

web: <http://www.rcdc.gov.bt>, E Mail: [rcdc.bhutan@gmail.com](mailto:rcdc.bhutan@gmail.com)

September (Epidemiological Weeks 35-39), 2023

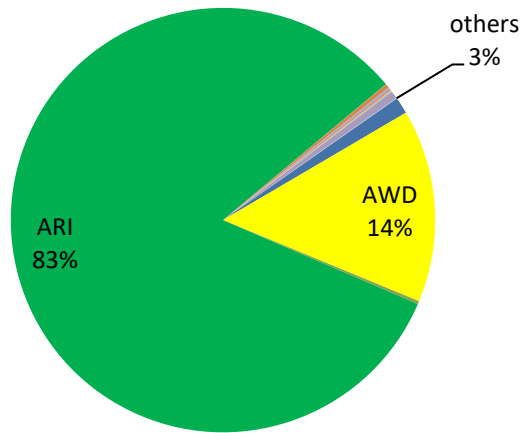
### 1. Highlights on NEWARS reporting

#### Immediate and Events reports:

- a) Three cases of suspected bacterial meningitis were reported from JDWNRH,
- b) Four malaria cases were detected, two from the Sarpang,, one from Haa and another from Samdrupjongkhar.
- c) Two suspected cases of Pertussis were reported from JDWNRH
- d) Total of 35 samples of suspected Measles/Rubella cases were tested, of which one of the samples tested positive for Measles IgM.
- e) Twenty-six disease Outbreaks were reported during the month of September. Among them 20 (76.9%) were the outbreak of conjunctivitis: a majority of these were reported from eastern region. The other outbreaks reported were Influenza-like Illness from three health facilities, a Chicken pox from Paro and an Acute Gastro-enteritis from Haa hospital.

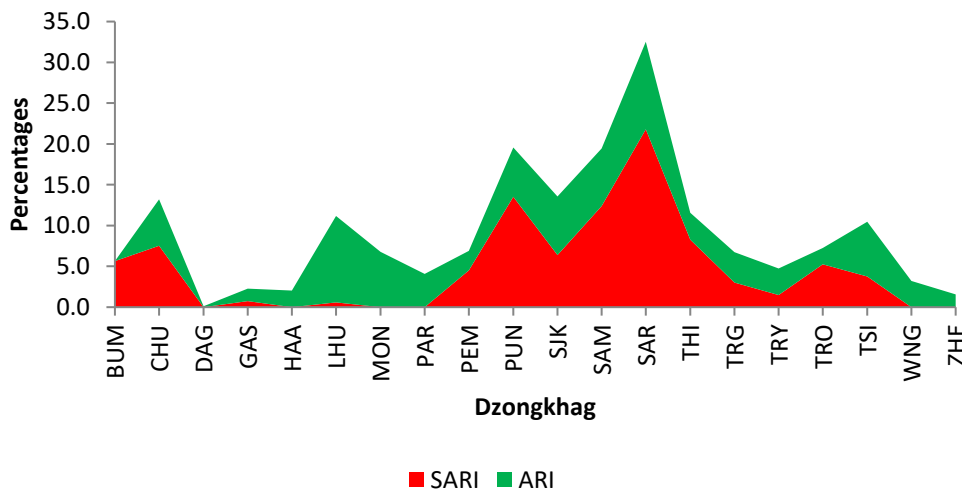
## 2. Status of Notifiable Diseases/Syndromes reported:

A total of 27217 cases of notifiable diseases were reported in the weekly indicator-based surveillance system, among the 11 weekly notifiable diseases, Acute Respiratory Infection (ARI) (83.0%) followed by Acute Watery Diarrhea (AWD) (14.0%) topped the list (**Figure 1**).



**Figure 1:** Proportion of notifiable diseases reported in NEWARS

A total of 22307 cases of respiratory illness were reported: among dzongkhags, Sarpang and Samtse had reported the highest percentage of both ARI and SARI cases (**Figure 2**)



**Figure 2:** Proportion of ARI and SARI reported by Dzongkhags

Similarly, 4255 cases of diarrheal diseases were reported, The Thimphu and Chhukha dzongkhag reported the highest percentage of both AWD and ABD (Figure 3).

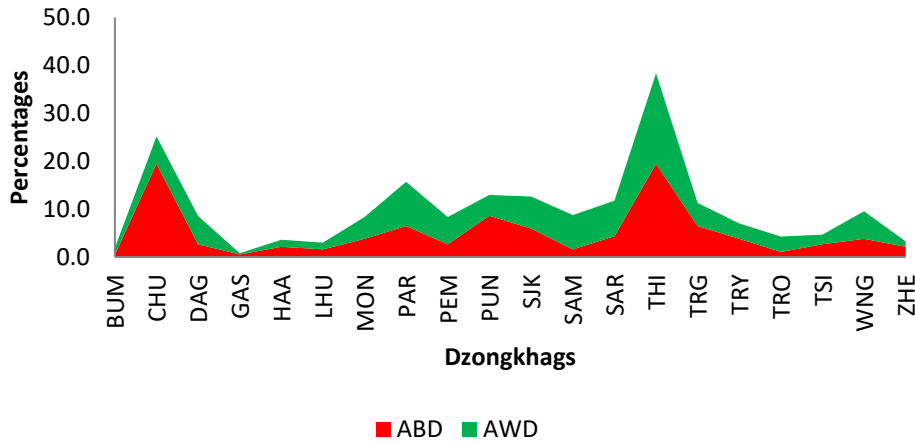


Figure 3: Proportion of ABD and AWD reported by Dzongkhag

### 3. Status of Notifiable Diseases/Syndromes for the month

Of the total weekly report received in the system, 85.0% were reported in time, 8.0% were lately reported, and the rest (7.0%) of weekly reports were not received (Figure 4).

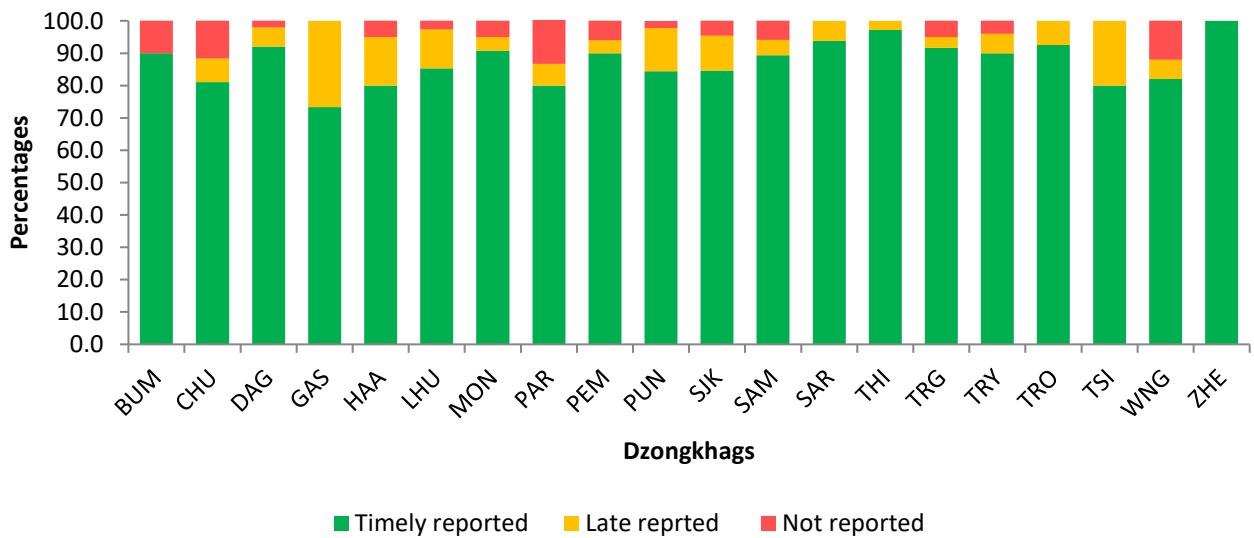


Figure 4: Reporting status of Notifiable Diseases by Dzongkhags