

MONTHLY DISEASES EPIDEMIOLOGY REPORT

Royal Centre for Disease Control

DoPH, Ministry of Health

Wangchutaba, Serbithang, Thimphu, Bhutan.

Post Box No. 667, Tele: +975-02-350577/78, Fax: +975-2-332464

web: <http://www.rcdc.gov.bt>, E Mail: rcdc.bhutan@gmail.com



June (Epidemiological Weeks 22-26), 2022

1. Highlights on COVID-19 surveillance and NEWARS reporting

I. Highlights on COVID-19:

- a) Total of 196 SARS-CoV-2 cases were detected in the month of June 2022
- b) The trend of detecting SARS-COV-2 cases had been declined steadily
- c) With 196 detected cases, the cumulative number have gone to 59,824 at the end of June 2022.

II. Highlights on NEWARS:

- a) Eight dengue fever, four suspected measles and one malaria case were reported in June 2022
- b) Five outbreaks (three outbreak of acute gastroenteritis, one food poisoning and one chicken pox) was reported during the month. All outbreaks were investigated by the local health centers with the recommendation from RCDC

2. Situation of COVID-19:

The lowest number (196) SARS-CoV-2 of cases was detected month of June compared with the monthly case detected from January to May of the year, 2022 (**Figure 1**).

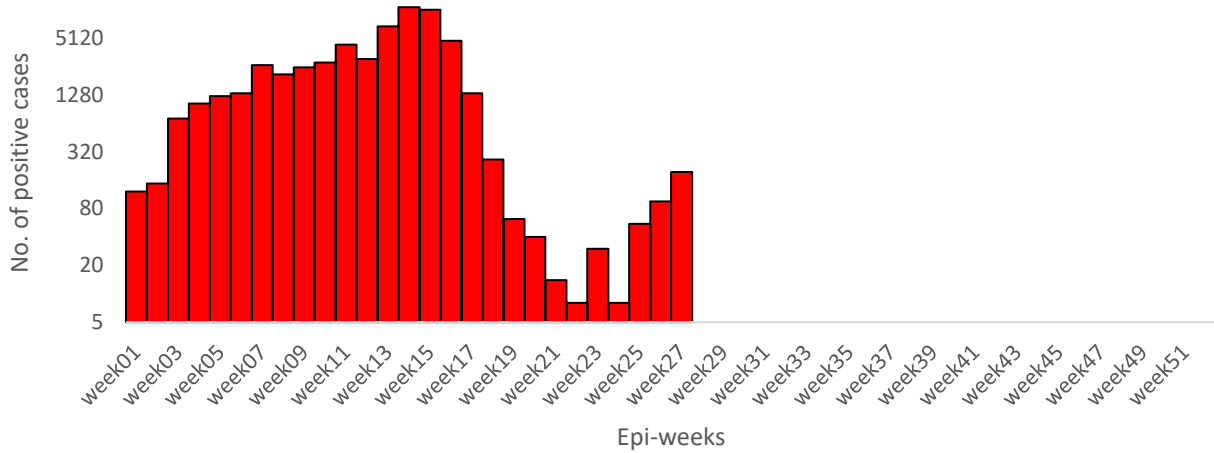


Figure 1: No. of samples tested positive for SARS-CoV-2 by epi-week

3. Status of Notifiable Diseases/Syndromes reported:

A total of 15393 cases of notifiable diseases were reported in the weekly indicator-based surveillance system, among the 10 weekly notifiable diseases, ARI (69.0%) followed by AWD (26.0%) topped the list (**Figure 2**).

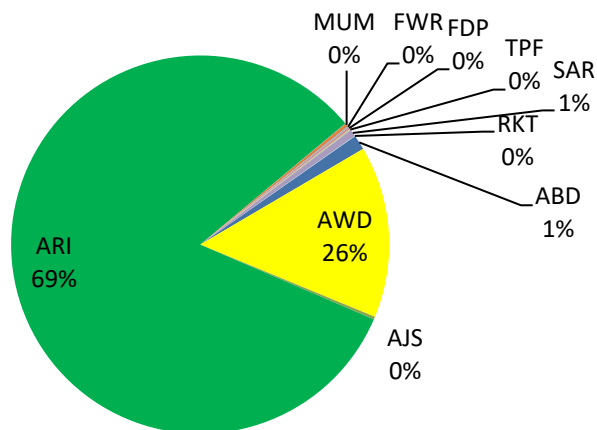
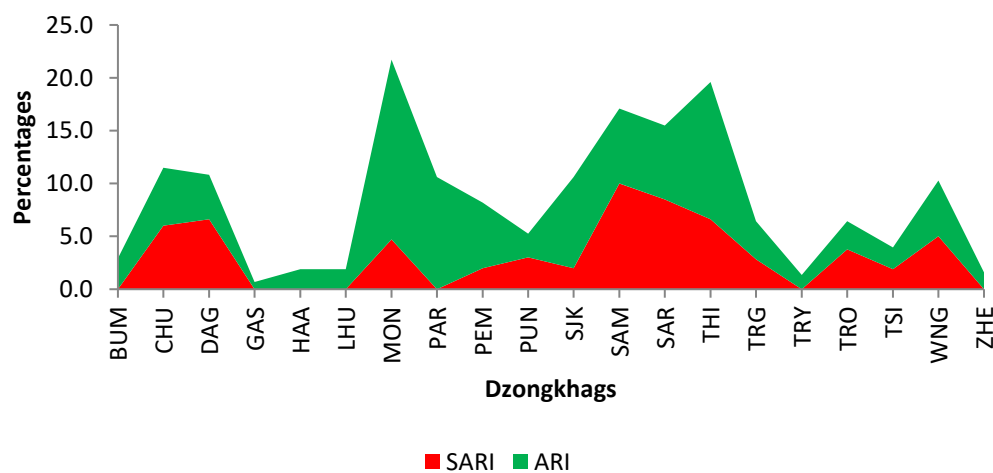


Figure 2: Proportion of notifiable diseases reported in NEWARS

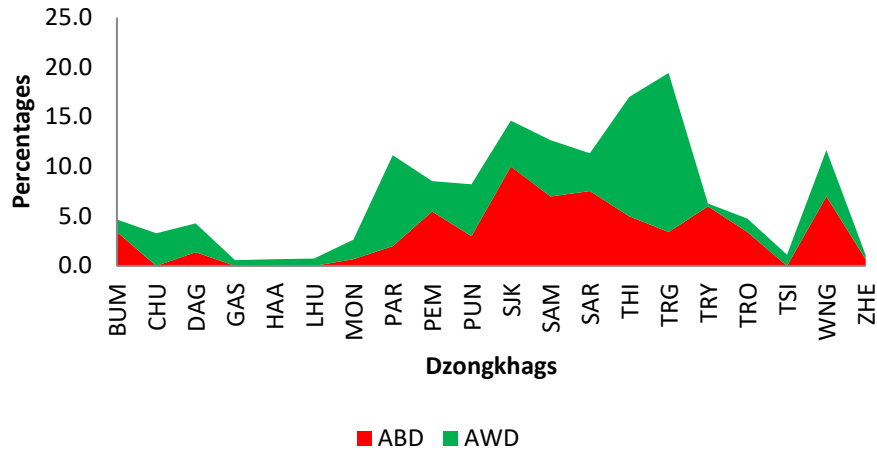
Among dzongkhags, Mongar had reported the highest percentage of ARI while Samtse reported the highest number of SARI cases (**Figure 3**).



ARI: Acute Respiratory Illness; **SARI:** Severe Acute Respiratory Illness

Figure 3: Proportion of ARI and SARI reported by Dzongkhags

Among dzongkhag Trashigang dzongkhag reported the highest percentage of AWD, while the highest percentage of ABD was reported from Samdrupjongkhar (**Figure 4**).



ABD: Acute Bloody Diarrhea; AWD: Acute Watery Diarrhea

Figure 4: Proportion of ABD and AWD reported by Dzongkhags

4. Status of Notifiable Diseases/Syndromes for the month

Of the total weekly report received in the system, 70.0% were reported in time, 18.0% were lately reported, and the rest were not reported (**Figure 5**).

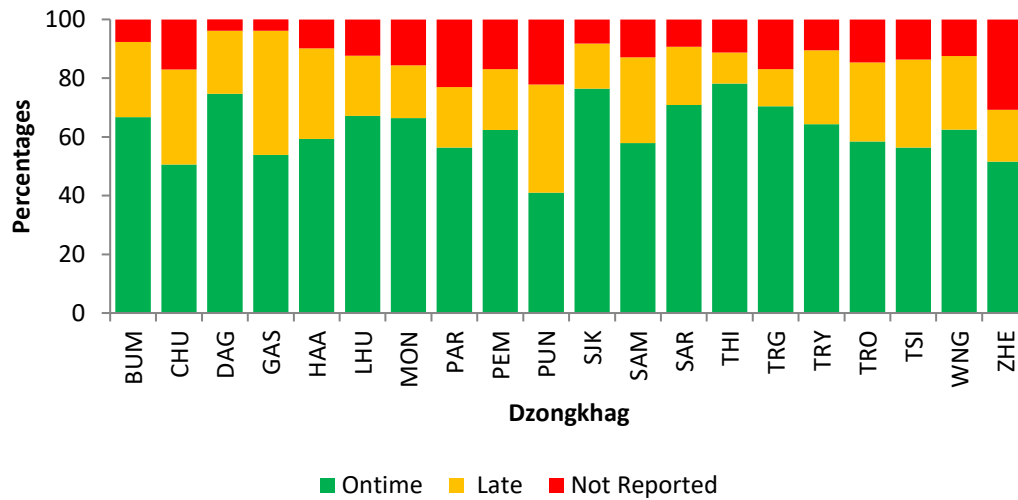


Figure 5: Reporting status of Notifiable Diseases by Dzongkhags