

# MONTHLY DISEASES EPIDEMIOLOGY REPORT

## Royal Centre for Disease Control

DoPH, Ministry of Health

Wangchutaba, Serbithang, Thimphu, Bhutan.

Post Box No. 667, Tele: +975-02-350577/78, Fax: +975-2-332464

web: <http://www.rcdc.gov.bt>, E Mail: [rcdc.bhutan@gmail.com](mailto:rcdc.bhutan@gmail.com)

November (Epidemiological Weeks 44- 47), 2022

### 1. Highlights on COVID-19 surveillance and NEWARS reporting

#### I. Highlights on COVID-19:

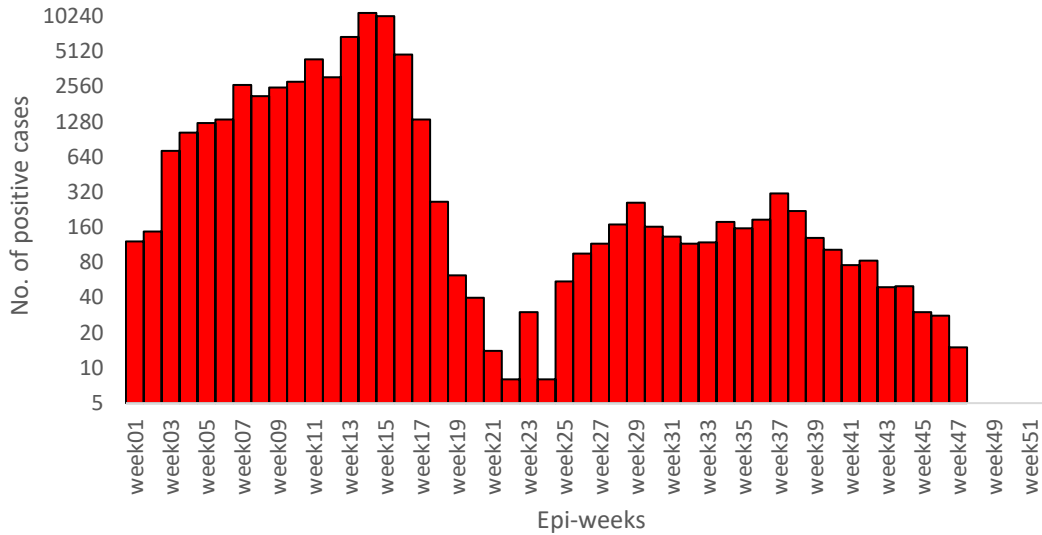
- a) Total of 162 SARS-CoV-2 positive cases were detected in the month of November 2022
- b) The trend of SARS-COV-2 cases had been declining since September 2022
- c) With 162 detected cases, the cumulative number has gone to 62,554 at the end of November 2022.

#### II. Highlights on NEWARS:

- a) Nineteen dengue fever, two suspected acute encephalitis, two measles, one malaria, and one AFP cases were reported in November 2022
- b) Five outbreaks of Influenza Like Illness, one Chickenpox, One measles and One Glossitis were reported during the month. All outbreaks except measles were investigated by the local health centers with the recommendation from RCDC. The team from RCDC and VPD program joined Trongsa team to support the measles outbreak investigation

## 2. Situation of COVID-19:

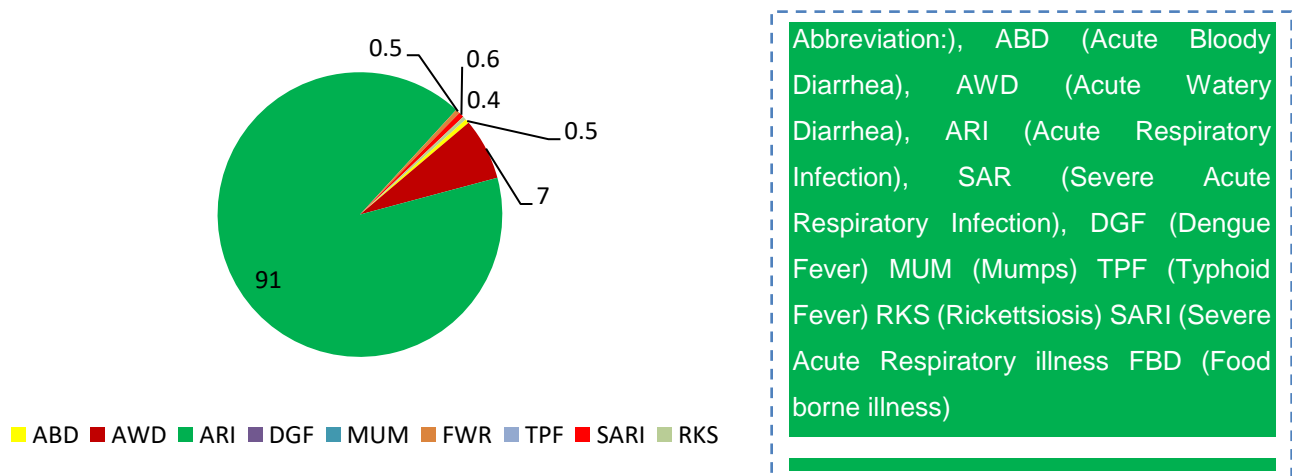
A total of 162 laboratory-confirmed cases of SARS-CoV-2 have detected in the month of November the trend of case detection declined since the September 2022 (**Figure 1**).



**Figure 1:** No. of samples tested positive for SARS-CoV-2 by epi-week

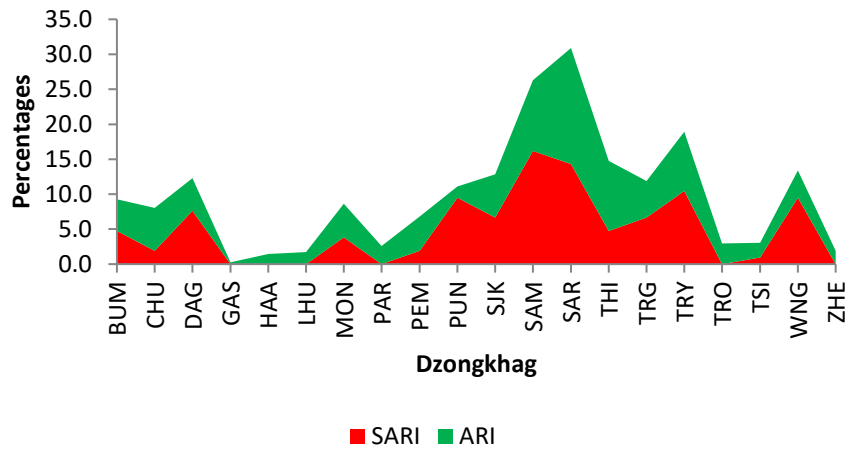
## 3. Status of Notifiable Diseases/Syndromes reported:

A total of 19,263 cases of notifiable diseases were reported in the weekly indicator-based surveillance system, among the 11 weekly notifiable diseases ARI (91.0%) followed by AWD (7.0%) topped the list (**Figure 2**).



**Figure 2:** Proportion of notifiable diseases reported in NEWARS

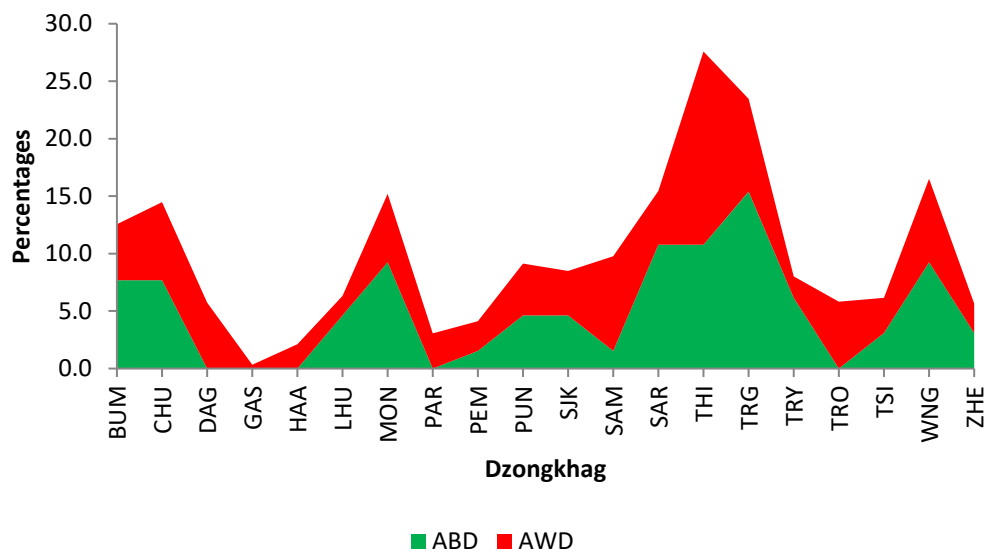
Among dzongkhags, Samtse and Sarpang had reported a higher percentage of ARI and SARI cases (Figure 3):



**Figure 3:** Proportion of ARI and SARI reported by Dzongkhags

**ARI:** Acute Respiratory Illness; **SARI:** Severe Acute Respiratory Illness

The reported incidence of AWD was higher in Thimphu dzongkhag, while the highest percentage of ABD was reported in Trashigang Dzongkhag (Figure 4).

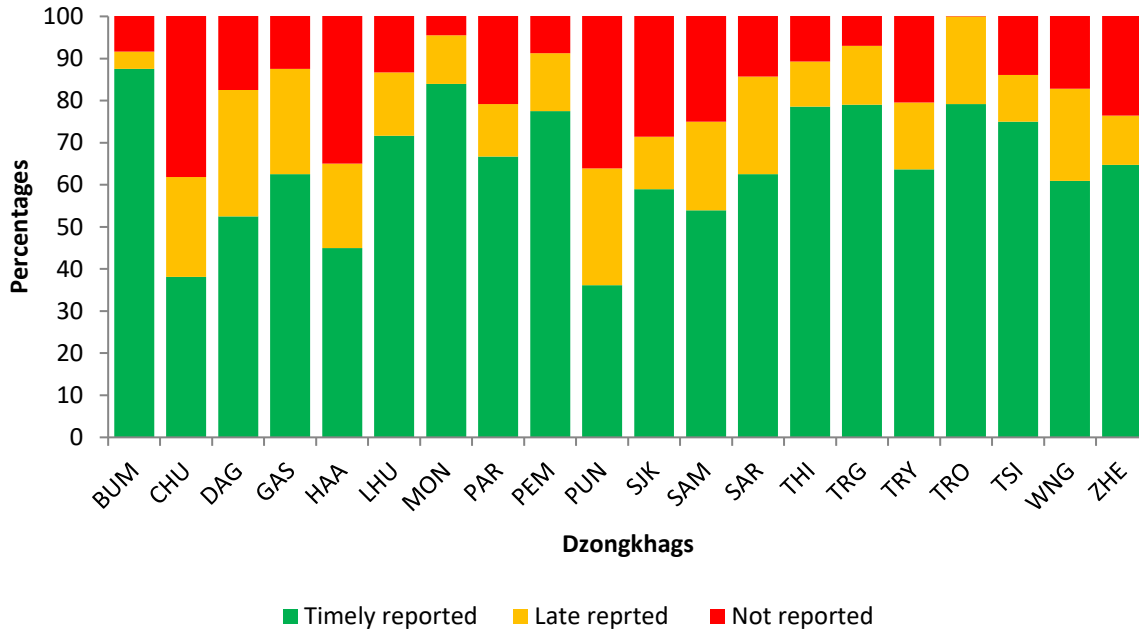


**ABD:** Acute Bloody Diarrhea; **AWD:** Acute Watery Diarrhea

**Figure 4:** Proportion of ABD and AWD reported by Dzongkhags

#### 4. Status of Notifiable Diseases/Syndromes for the month

Of the total weekly report received in the system, 65.0% were reported in time, 17.0% were lately reported, and the rest were not reported (**Figure 5**).



**Figure 5:** Reporting status of Notifiable Diseases by Dzongkhags