

MONTHLY DISEASES EPIDEMIOLOGY REPORT

Royal Centre for Disease Control

DoPH, Ministry of Health

Wangchutaba, Serbithang, Thimphu, Bhutan.

Post Box No. 667, Tele: +975-02-350577/78, Fax: +975-2-332464

web: <http://www.rcdc.gov.bt>, E Mail: rcdc.bhutan@gmail.com



August (Epidemiological Weeks 31-34), 2023

1. Highlights on NEWARS reporting

Immediate and Events reports:

- a) Four cases of suspected bacterial meningitis were reported: two from JDWNRH, one from CRRH and one from Chuzagang hospital.
- b) Six malaria cases were detected, all were from the Sarpang dzongkhag.
- c) Two suspected case of Pertussis were reported from JDWNRH
- d) Total of 26 samples of suspected Measles/Rubella cases were tested, of which none of the samples tested positive for Measles and Rubella IgM.
- e) Highest number (50) disease Outbreaks were reported during the month of August. Among them conjunctivitis outbreak was reported by 36 health facilities across the country. Total of 10600 individual were affected by the conjunctivitis outbreaks. The other outbreaks reported were Influenza-like Illness from eight health facilities, Scrub typhus from Nganglam hospital, Typhoid fever from Tsangpo hospital and two reported Chickenpox .

2. Status of Notifiable Diseases/Syndromes reported:

A total of 21502 cases of notifiable diseases were reported in the weekly indicator-based surveillance system, among the 11 weekly notifiable diseases, Acute Respiratory Infection (ARI) (87.0%) followed by Acute Watery Diarrhea (AWD) (11.0%) topped the list (**Figure 1**).

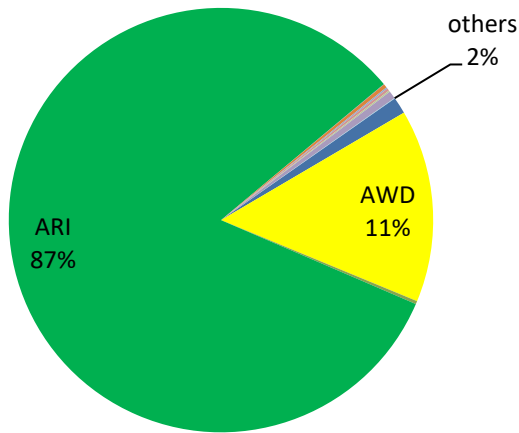


Figure 1: Proportion of notifiable diseases reported in NEWARS

A total of 18780 cases of respiratory illness were reported during August 2023. Among dzongkhags, Chhukha, Samdrupjongkhar and Samtse had reported the highest percentage of both ARI and SARI cases (**Figure 2**)

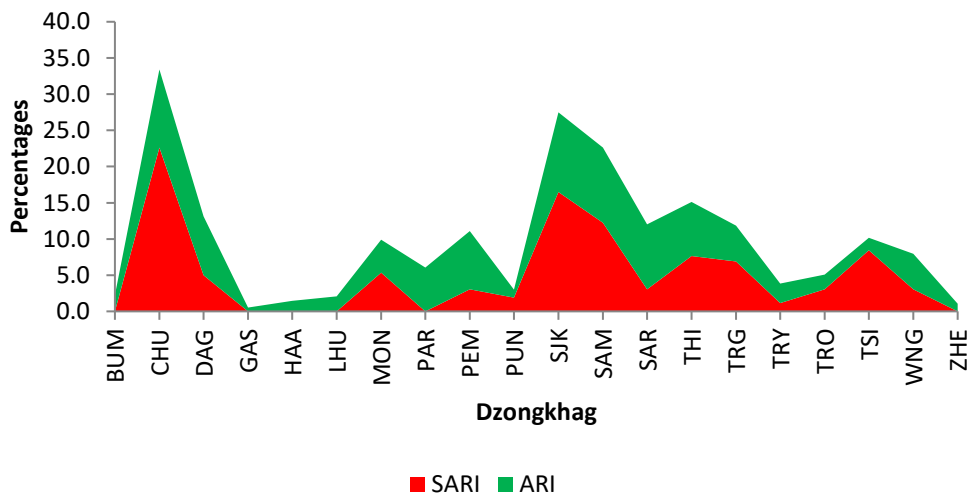


Figure 2: Proportion of ARI and SARI reported by Dzongkhags

Similarly, 2300 cases of diarrheal diseases were reported, The Thimphu and Chhukha dzongkhag reported the highest percentage of both AWD and ABD (**Figure 3**).

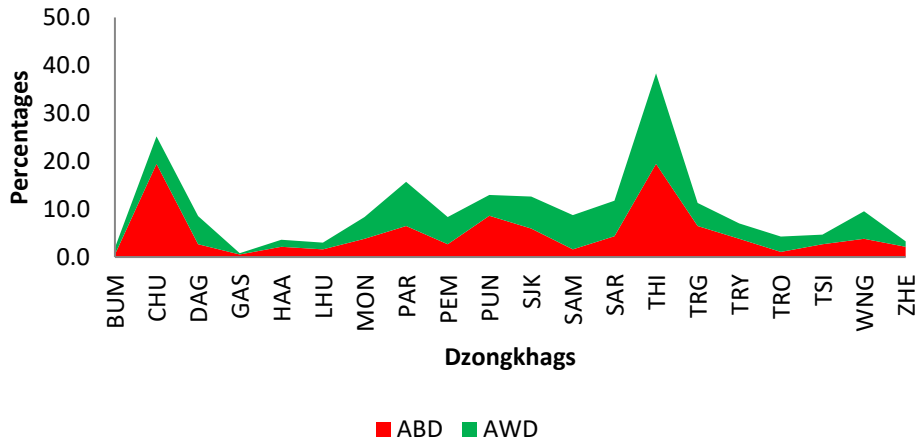


Figure 3: Proportion of ABD and AWD reported by Dzongkhag

3. Status of Notifiable Diseases/Syndromes for the month

Of the total weekly report received in the system, 88.0% were reported in time, 7.0% were lately reported, and the rest (5.0%) of weekly reports were not received (**Figure 4**).

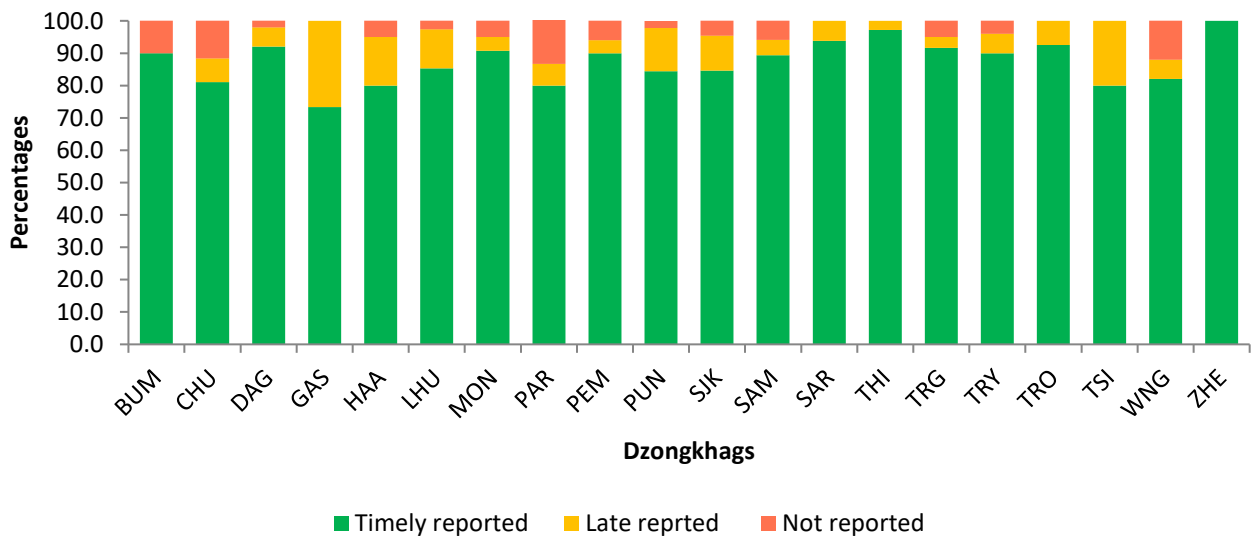


Figure 4: Reporting status of Notifiable Diseases by Dzongkhags