

MONTHLY DISEASES EPIDEMIOLOGY REPORT

Royal Centre for Disease Control

DoPH, Ministry of Health

Wangchutaba, Serbithang, Thimphu, Bhutan.

Post Box No. 667, Tele: +975-02-350577/78, Fax: +975-2-332464

web: <http://www.rcdc.gov.bt>, E Mail: rcdc.bhutan@gmail.com

November (Epidemiological Weeks 44-47), 2023

1. Highlights on NEWARS reporting

Immediate and Events reports:

- a) Two imported case of Malaria were reported: one was from Wangduephodrang and another one from Paro Hospital.
- b) A case of suspected Acute Flaccid Paralysis was reported from JDWNRH
- c) Total of 17 samples of suspected Measles/Rubella cases were tested, among them one sample tested positive for Measles and two samples tested positive for Rubella IgM. All positive samples were from Thimphu dzongkhag,
- d) Seven disease outbreak were reported during the month of November. Among them four were the outbreak of Glossitis (Tashidengkha School from Punakha Bjishong Central School, Gasa, Wamrong LS School, Trashigang and Nganglam Central School, Pemagatshel), a Dengue outbreak from Phuntsholing community, a Chickenpox outbreak from Wangduephodrang and an Influenza-like Illness outbreak from Zhemgang. Almost all outbreaks were reported from schools. All outbreaks were responded to by the respective health centers upon the recommendations of RCDC.

2. Status of Notifiable Diseases/Syndromes reported:

A total of 17453 cases of notifiable diseases were reported in the weekly indicator-based surveillance system, among the 11 weekly notifiable diseases, Acute Respiratory Infection (ARI) (88.5%) followed by Acute Watery Diarrhea (AWD) (8.0%) topped the list of diseases (**Figure 1**).

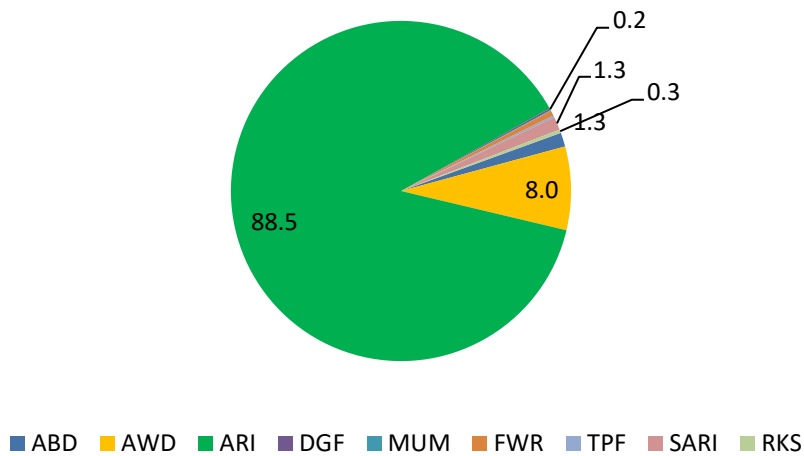


Figure 1: Proportion of notifiable diseases reported in NEWARS

A total of 15609 cases of respiratory illness were reported: among Dzongkhags, Thimphu and Chhukha had reported the highest percentage of ARI cases while Wangduephodrang and Sarpang had reported the maximum number of SARI cases (**Figure 2**).

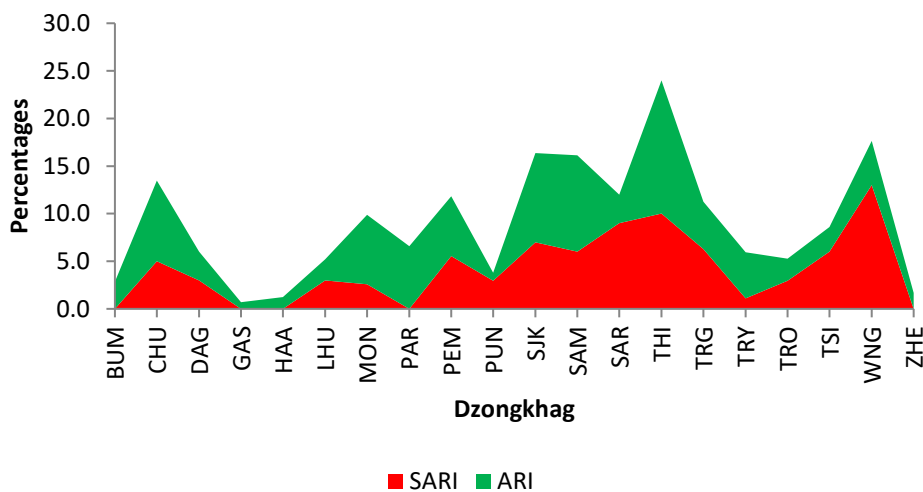


Figure 2: Proportion of ARI and SARI reported by Dzongkhags

Similarly, 1541 cases of diarrheal diseases were reported, Chhukha and Thimphu dzongkhag reported the highest percentage of AWD cases while Wangduephodrang and Punakha dzongkhag reported higher percentage of the ABD cases (**Figure 3**).

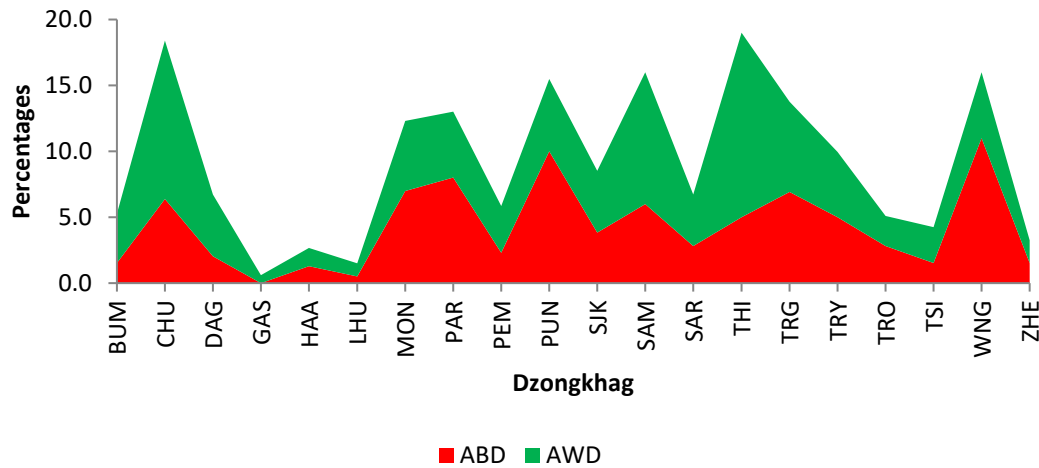


Figure 3: Proportion of ABD and AWD reported by Dzongkhag

3. Status of Notifiable Diseases/Syndromes for the month

Of the total weekly report received in the system, 85.0% were reported in time, 7.0% were lately reported, and the rest (8.0%) of weekly reports were not received (**Figure 4**).

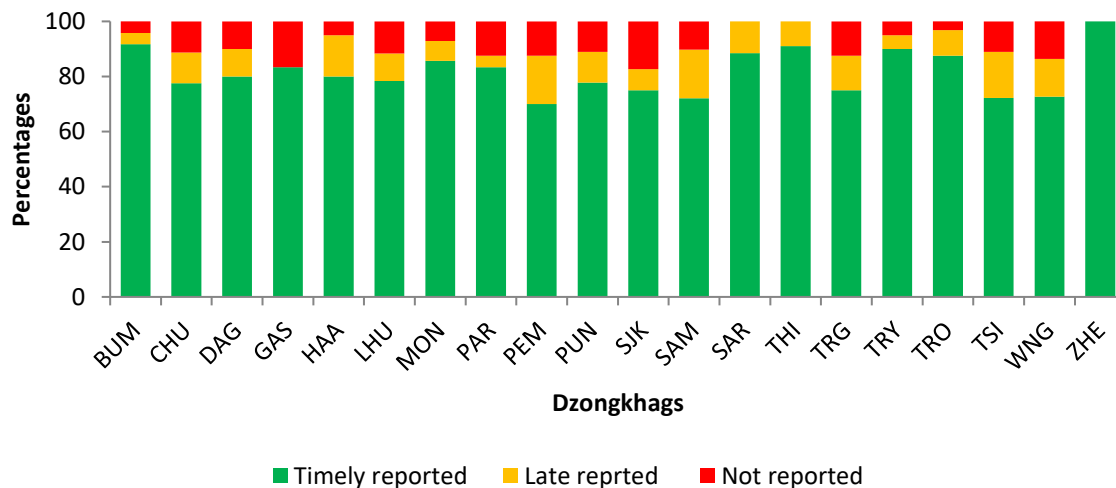


Figure 4: Reporting status of notifiable diseases by Dzongkhags