

Weekly Report of COVID-19 Integrated ILI and SARI Surveillance

Royal Centre for Disease Control
Ministry of Health

Wangchutaba, Serbithang, Thimphu, Bhutan.

Post Box No. 667, Tele: +975-02-350577/78

Website: www.rcdc.gov.bt, Email: rcdc@health.gov.bt

Weekly COVID-19 Integrated Flu Surveillance Report for week 2 (Jan 8–14, 2024)

- A total of 30 ILI and SARI specimens were received and detected 20.0% (6) influenza and 26.7% (8) SARS-CoV-2 positives by Multiplex PCR (SC2). Influenza positivity increased by 8.2% compared to the previous week (11.8%) (Figure 1). The affected age group for Influenza was 15–29 years (50.0%), followed by 30–64 years (33.3%) and affected age group for COVID-19 was 30–64 year (50.0%) followed by >65 years (37.5%) (Figure 2).
- Except, Paro Hospital for SARI, all ILI and SARI sentinel Hospitals have reported for the week (Figure 5, Table 3).

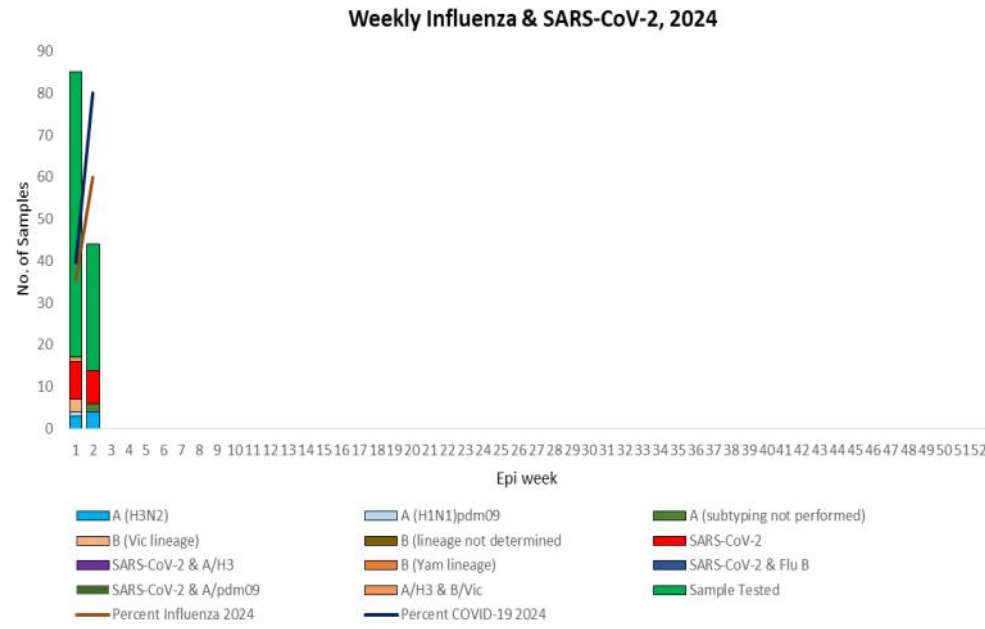


Figure 1: Weekly Influenza subtypes and SARS-CoV-2 through ILI and SARI Sentinel Surveillance

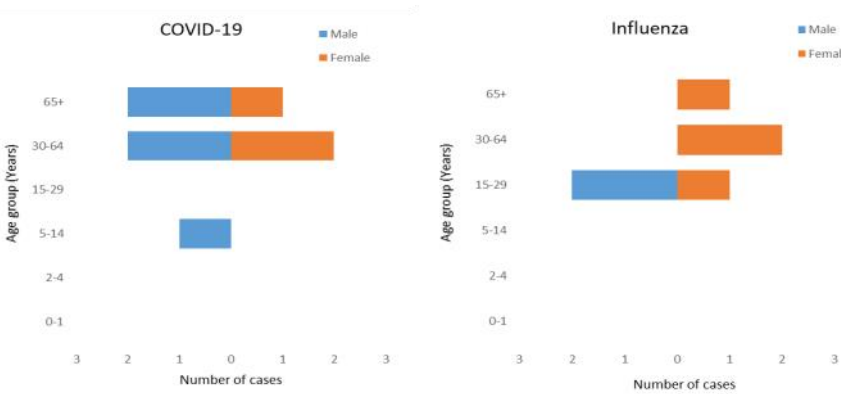


Figure 2: Influenza & SARS-CoV-2 positives by age group and gender

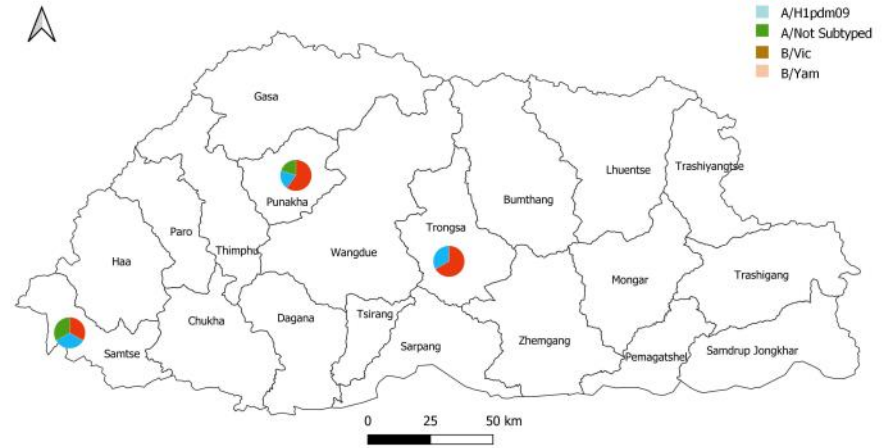


Figure 3: Influenza subtype & SARS-CoV-2 positive percent by District

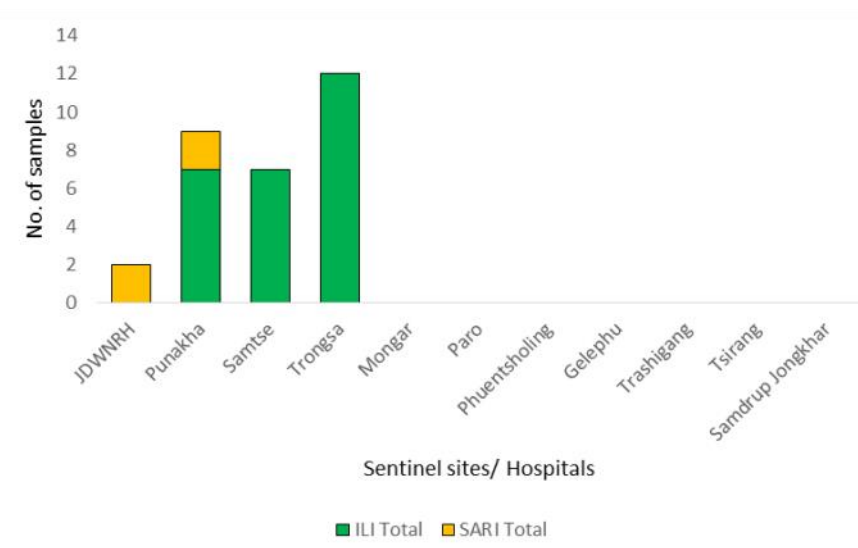


Figure 4: ILI and SARI Specimens status for Testing week 2, 2024

Table 2: Influenza subtypes and SARS-CoV-2 in Testing week 2, 2024

Sentinel Sites/ Hospitals	ILI				ILI Total	SARI		Grand Total
	A/ Not subtyped	SARS- A/H3	COV-2 Neg	SARI Total				
JDWNRH						2	2	2
Punakha		1	3	3	7	1	1	2
Samtse	1	1	1	4	7			7
Trongsa		2	4	6	12			12
Mongar								
Paro								
Phuentsholing								
Gelephu								
Trashigang								
Tsirang								
Samdrup Jongkhar								
Grand Total	1	4	8	13	26	1	3	4

Table 3: ILI and SARI cases reporting status for week 2, 2024

Year	Week	Site	Department	SARI	IPD	Year	Week	Site	ILI	OPD
2024	2	Gelephu CRRH	Pediatric Ward	6	6	2024	2	Paro Hospital	14	2349
2024	2	Gelephu CRRH	ICU	0	4	2024	2	Punakha Hospital	72	1032
2024	2	Gelephu CRRH	Medical Ward	Not Reported		2024	2	Samdrup Jongkhar Hospital	11	367
2024	2	JDWNRH	Pediatric Ward	2	19	2024	2	Samtse Hospital	8	994
2024	2	JDWNRH	Medical Extension Ward	Not Reported		2024	2	Trashigang Hospital	17	551
2024	2	JDWNRH	Pediatric ICU	0	5	2024	2	Trongsa Hospital	8	279
2024	2	JDWNRH	Cabin	Not Reported		2024	2	Tsirang Hospital	18	748
2024	2	JDWNRH	Medical Ward	0	14	Total 148 6320				
2024	2	JDWNRH	ICU	0	10					
2024	2	JDWNRH	Emergency	Not Reported						
2024	2	Monggar ERRH	ICU	Not Reported						
2024	2	Monggar ERRH	Medical Ward	Not Reported						
2024	2	Monggar ERRH	Pediatric Ward	1	5					
2024	2	Paro Hospital	General Ward	Not Reported						
2024	2	Phuentsholing Hospital	Medical Ward	5	20					
2024	2	Punakha Hospital	General Ward	3	21					
2024	2	Samdrup Jongkhar Hospital	General Ward	0	5					
2024	2	Samtse Hospital	General Ward	3	3					
2024	2	Trashigang Hospital	General Ward	0	34					
2024	2	Trongsa Hospital	General Ward	0	4					
2024	2	Tsirang Hospital	General Ward	0	20					
				Total	20	170				

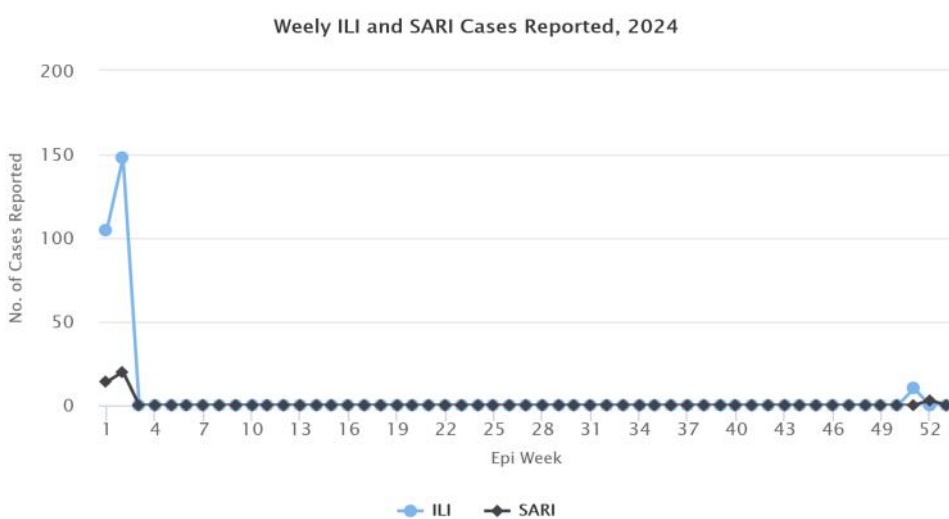


Figure 5: Weekly trend of ILI and SARI cases reported by Sentinel Hospitals