

MONTHLY DISEASES EPIDEMIOLOGY REPORT

Royal Centre for Disease Control

DoPH, Ministry of Health

Wangchutaba, Serbithang, Thimphu, Bhutan.

Post Box No. 667, Tele: +975-02-350577/78, Fax: +975-2-332464

web: <http://www.rcdc.gov.bt>, E Mail: rcdc.bhutan@gmail.com

December (Epidemiological Weeks 48-52), 2023

1. Highlights on NEWARS reporting

Immediate and Events reports:

- a) Two imported cases of Malaria were reported: one was from Lungtenphu Military Hospital and other one was from Paro Hospital.
- b) Three suspected cases of Pertussis was reported from JDWNRH, all tested negative for Pertussis.
- c) Total of 11 samples of suspected Measles/Rubella cases were tested, none of the sample tested positive for Measles and Rubella IgM.
- d) One outbreak of Chickenpox was reported from Gaynekha, Thimphu. It was categorized as low risk, local health center investigated it upon RCDC recommendation.

2. Status of Notifiable Diseases/Syndromes reported:

A total of 12300 cases of notifiable diseases were reported in the weekly indicator-based surveillance system, among the 11 weekly notifiable diseases, Acute Respiratory Infection (ARI) (83.5%) followed by Acute Watery Diarrhea (AWD) (15.0%) topped the list of diseases (**Figure 1**).

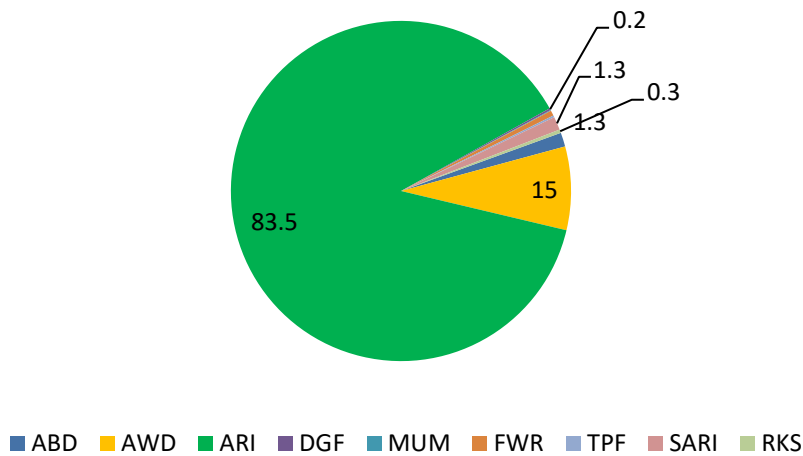


Figure 1: Proportion of notifiable diseases reported in NEWARS

A total of 9350 cases of respiratory illness were reported: among dzongkhags, Thimphu and Chukha had reported the highest percentage of ARI cases while Wangduephodrang and Punakha had reported the maximum number of SARI cases (**Figure 2**).

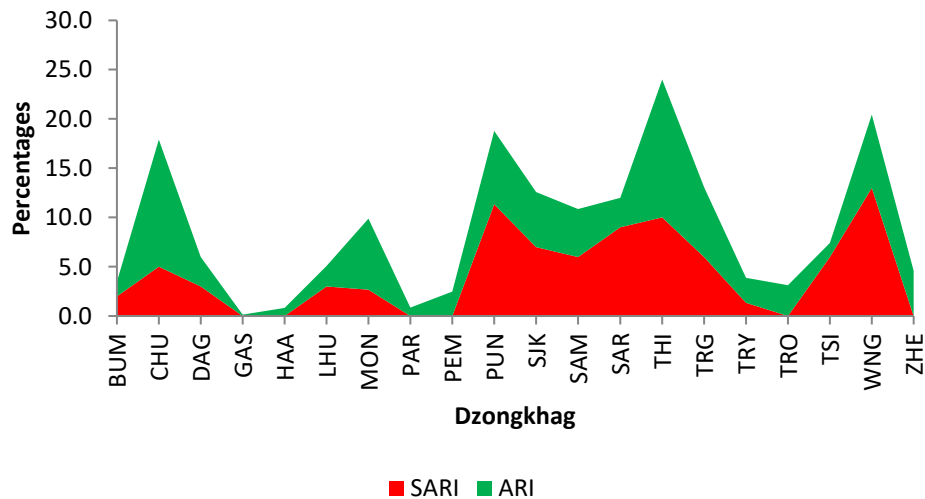


Figure 2: Proportion of ARI and SARI reported by dzongkhags

Similarly, 1825 cases of diarrheal diseases were reported, Chhukha and Thimphu dzongkhag reported the highest percentage of AWD cases while Chhukha and Punakha dzongkhag reported higher percentage of the ABD cases (**Figure 3**).

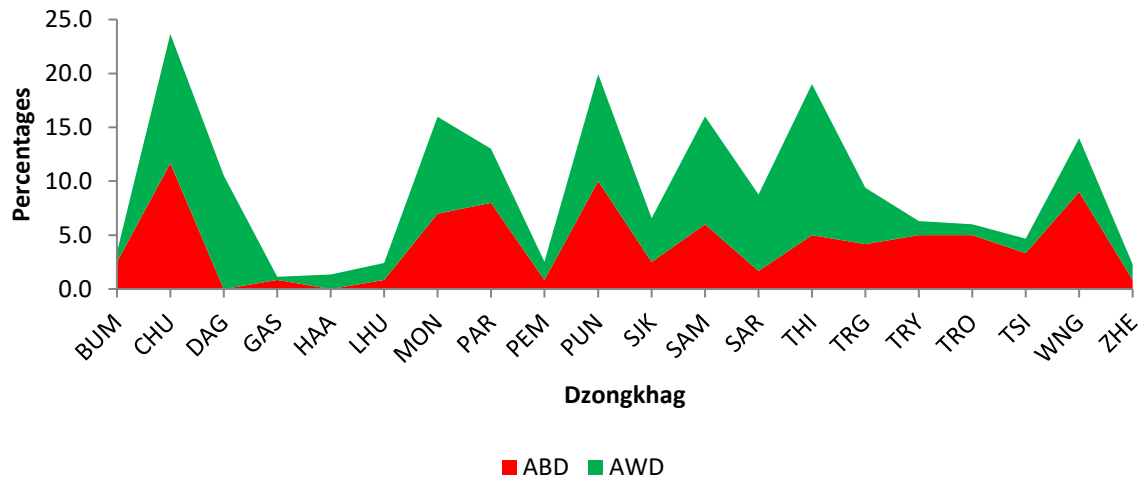


Figure 3: Proportion of ABD and AWD reported by dzongkhag

3. Status of Notifiable Diseases/Syndromes for the month

Of the total weekly report received in the system, 85.0% were reported in time, 5.0% were lately reported, and the rest (10.0%) of weekly reports were not received (**Figure 4**).

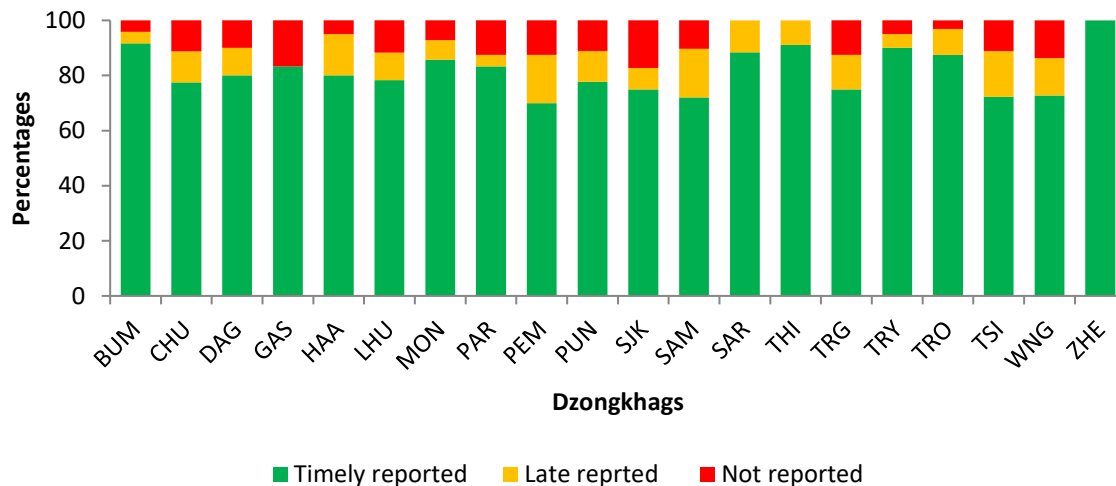


Figure 4: Reporting status of notifiable diseases by Dzongkhags