

གསོ་བ་ལྷན་ཁག།

MINISTRY OF HEALTH



Annual Health Bulletin

2023

Published by:

HMIS and Research Section, Policy and Planning Division (PPD)

Ministry of Health (MoH), Royal Government of Bhutan

PO Box No : 726, Kawang Jangsa, Thimphu, Bhutan. 11001

Tel No : +975-2- 328095/321842

Email : ppd@health.gov.bt

Website : www.health.gov.bt

Copyright : All rights reserved © 2022, Policy and Planning Division, Ministry of Health (MoH), Royal Government of Bhutan.

Design and Layout : Mr. Chana Singye, Graphic Designer, HPD

Suggested Citation : Ministry of Health, (2023). Annual Health Bulletin, Thimphu; PPD, MoH.

CONTENTS

Foreword	i
Acknowledgement	iii
State of Nations health	1
Trend in selected morbidity cases (related to respiratory system, water, sanitation, and hygiene)	3
Trend in selected morbidity cases (non-communicable diseases)	4
Trend in Mortality recorded by Health facilities.	6
Malaria	7

LIST OF TABLES

Section 1: Health Indicators	9
Table 1.1: Sustainable Development Goals and the corresponding national health indicators in Bhutan as of 2022	9
Table 1.2: Selected Health indicators and their trend for past five years	16
Table 1.3: Selected health indicators and their trend	17
Table 1.4: Health workforce indicators and their trend over the past 5 years (2018-2022)	19
Section 2: Morbidity and Mortality	20
Table 2.1: Total Morbidity at National Level	20
Table 2.2: Out-Patient cases seen in all Hospital, 2022	28
Table 2.3: Inpatient cases in all hospitals-2022	36
Table 2.4: Morbidity cases seen by Primary health care-2022	44
Table 2.5: Total case load in each hospital, 2022	52

Table 2.6: Case load by Primary Health Care, 2022	54
Table 2.7: Trend in Morbidity in Bhutan	63
Table 2.8: Mortality cases by diseases for last 5 years, Bhutan	67
Section 3: Reproductive, maternal, newborn and child health	71
Table 3.1: Antenatal care (clinical attendance)	71
Table 3.2: Deliveries attended by trained health personnel and Post-natal care (clinical attendance)	72
Table 3.3: Family planning method	74
Table 3.4: Immunization Status by Districts, 2022	76
Table 3.5: Deliveries attended by trained health personnel and post-natal care (clinical attendance) by health facility, 2022	78
Table 3.6: Nutritional and vitamin A status of children attending clinics	118
Section 4: Preventive and Curative care services	120
Table 4.1: Total cases of notifiable diseases reported in 2022	120
Table 4.2: Cases Notification of Tuberculosis in 2022	122
Table 4.3: Leprosy	124
Table 4.4: Malaria	125
Table 4.5: HIV/VCT services provided by facilities, 2022	126
Section 5: Non-Communicable Diseases	132
Table 5.1: Non-Communicable Disease, 2022	132
Section 6: Service Capacity and Access	134
Table 6.1: Health facilities by Districts	134

Table 6.2: HR status of Health (1st quarter 2023)	147
Table 6.3: Selected Dental services provided by health facilities, 2022	148
Table 6.4: Laboratory tests, 2022	150
Table 6.5: Surgeries conducted by health facilities, 2022	152
Table 6.6: Selected diagnostic service	153
Table 6.7: Hospital admission and inpatient days, 2022	155
Table 6.8: Number of cases evacuated by Bhutan aeromedical services in 2022 by gender and case classifications	156
Table 7.1: Morbidity cases availing Traditional Medicine Services	157
Table 7.1: Morbidity cases availing Traditional Medicine Services	159
Table 7.3: Therapeutic services provided by TM services in 2022	163
Table 7.4: Facility-wise Therapeutic services provided by Traditional Medicine Service-2022	165

LIST OF TABLES

Figure 1: Trend in total caseload over the past 5 years	1
Figure 2: Top ten cases of morbidity seen at health facilities in 2022	2
Figure 3: Total IPD cases by type	2
Figure 4: Trend in selected morbidity cases (related to respiratory system, water, sanitation, and hygiene)	3
Figure 5: Trend in total cases of NCDs over the years	5
Figure 6: Top causes of mortality	6
Figure 7: Trend in malaria cases since 2017 by type of cases.	7

FOREWORD



The Ministry of Health recognizes the indispensable role of robust management information systems in effective planning, monitoring, and governance. We acknowledge the significance of timely and accurate health data in advancing our health systems, expanding services, and tracking progress in the sector.

With dedicated efforts, we have made considerable investments in improving our Health Management Information System (HMIS). We are proud to present the collated data through annual publications, notably the Annual Health Bulletin (AHB). This publication not only showcases key health indicators, including health-related Sustainable Development Goal (SDG) and national plan indicators, but also reflects our commitment to quality by implementing stringent data checks and validation processes.

In our continuous pursuit of data quality and reliability, we are now seeking to integrate the regular validation of data for diseases and services by concerned program officials into the AHB publication process. This step aims to further enhance the accuracy and credibility of the information presented. Additionally, we have initiated efforts to transform our HMIS into a paperless system through the implementation of the District Health Information System 2 (DHIS2). To ensure comprehensive and timely reporting from health facilities, we are prioritizing capacity building and equipping them with ICT tools, including tablets. However, we acknowledge the challenge posed by limited access to internet and telecommunication services in remote communities, hindering the complete realization of a paperless HMIS.

We remain fully committed to strengthening our information system as a vital resource for evidence-based health decisions and policy formulation. In line with this commitment, we are actively working towards the development of an electronic Patient Information System (ePIS) under the Digital Drukgyul Flagship Program. This initiative aims to improve the coverage, quality, and equity of healthcare services while enabling the usage and sharing of timely and accurate health information.

We sincerely hope that the rich data and information presented in the AHB 2023 will be effectively utilized by government agencies, civil society organizations, healthcare professionals, academics, development partners, media, and other stakeholders. We also welcome your feedback on further improving our system and publications as we strive for continuous enhancement.


(Dasho Dechen Wangmo)
Health Minister

Acknowledgement

The HMIS and Research Section (HRS), serving as the secretariat for the Annual Health Bulletin series under the Policy and Planning Division of the Ministry of Health, would like to express our heartfelt gratitude to each of you for your valuable contributions to the successful compilation of the AHB 2023.

Firstly, we extend our sincere appreciation to all health services providers and Dzongkhag Health Offices across the nation. Your dedicated efforts in compiling and submitting health data through the DHIS2 system have been crucial in ensuring the availability of accurate and comprehensive information.

Furthermore, we would like to express our gratitude to the following Programs and Divisions for sharing their program and administrative data, which significantly enriched the content of the AHB 2023:

1. Human Resource Division, Ministry of Health (List of human resources for health)
2. Surveillance & Epidemiology Unit, Royal Centre for Disease Control, Ministry of Health (Notifiable diseases data)
3. District Health Services Programme, Ministry of Health (List of health facilities)
4. National HIV/AIDS Control Program, Ministry of Health (HIV/AIDS data)
5. National TB Control Program, Ministry of Health (TB data)
6. Vector-Borne Disease Control Program, Ministry of Health (Malaria and dengue data)

We would like to extend a special appreciation to Mr. Chana Singye, an IT Professional from the Health Promotion Division under the Ministry of Health. His invaluable contribution in designing this book, demonstrating creativity, attention to detail, and technical expertise, was indispensable in shaping the final product.

Once again, we thank each and every one of you for your unwavering support and collaboration. It is through your collective efforts that we have been able to produce the AHB 2023, a valuable resource for health professionals, researchers, policymakers, and other stakeholders. Members of Annual Health Bulletin 2022 Secretariat:

Members of Annual Health Bulletin 2023 Secretariat:

HMIS Chairman

7. Mr. Tashi Penjor, Chief Planning Officer

Data compilation, tables and figures generations, drafting of AHB 2023

1. Chogyal Namgyal

2. Kinley Dorjee

Summary of health status and trends over the years and review of the draft AHB 2023

1. Mr. Mongal Singh Gurung, Dy. Chief Research Officer

2. Mr. Sonam Wangdi, Dy. Chief Planning Officer

3. Kinley Dorjee

State of Nations health

The total number of caseload (total hospital visitors) in the health facilities has increased by 2.1 percent in 2022 as compared to 2021 indicating an increase in health service utilization. However, the number of caseloads remains 20 percent lower than the total number of patients seen in 2018.

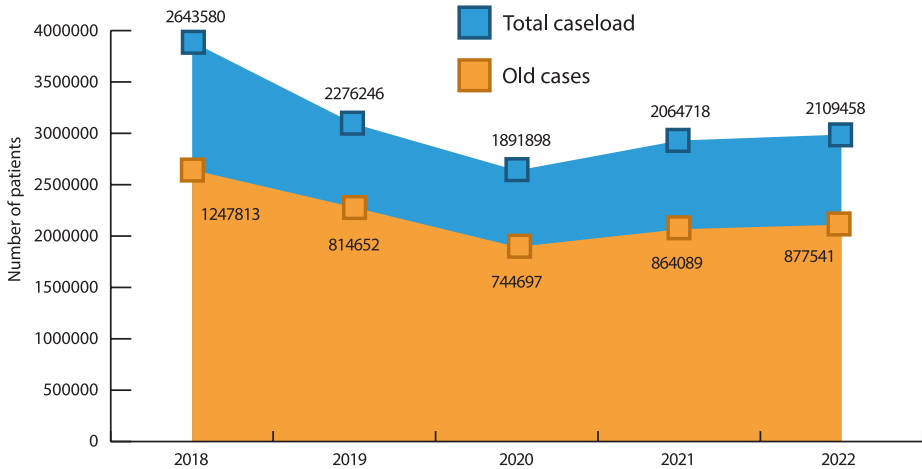


Figure 1: Trend in total caseload over the past 5 years

The most common causes of morbidity have not changed significantly over the past years. The common morbidity recorded in the health facilities around the country are common cold, skin infections, peptic ulcer symptoms and dental caries. The ten most common diseases account for 60 percent of the total morbidity cases (new cases) reported by the health facilities.

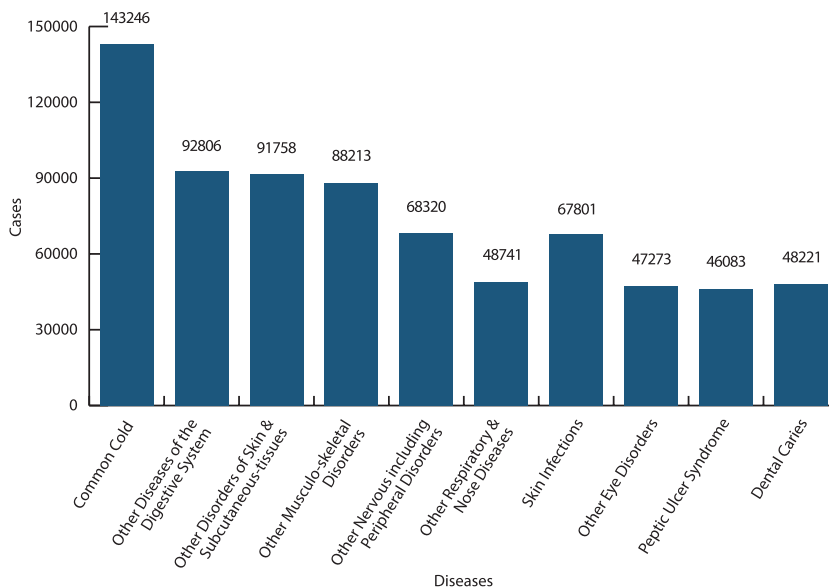


Figure 2: Top ten cases of morbidity seen at health facilities in 2022

Inpatient cases are reported only by the hospital. A total of 82839 IPD cases were reported in 2022, of which 87.12% of the IPD cases were new cases while 10675 were old cases (repeat admission due to same illness).

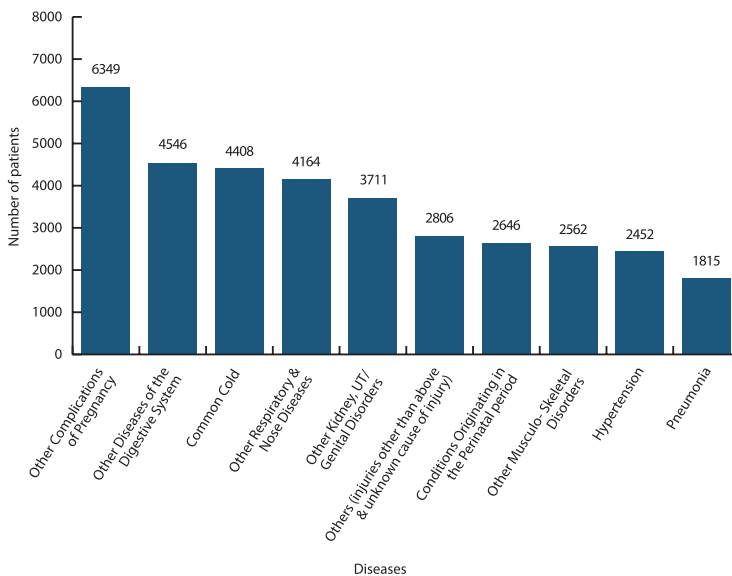


Figure 3: Total IPD cases by type

Trend in selected morbidity cases (related to respiratory system, water, sanitation, and hygiene)

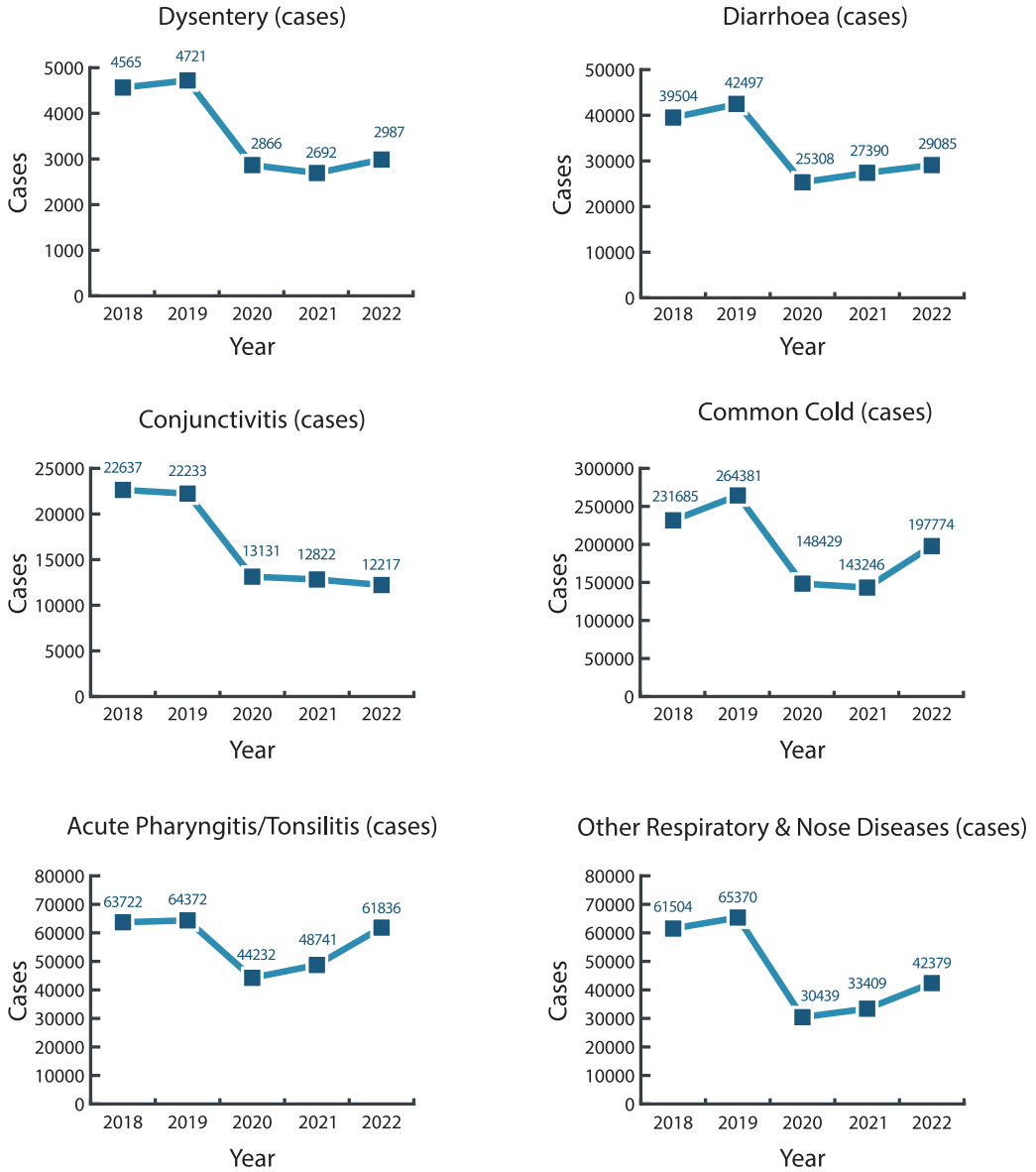


Figure 4: Trend in selected morbidity cases (related to respiratory system, water, sanitation, and hygiene)

There is a significant reduction in the incidence of diseases such as common cold (14.6%), Diarrhea (26%), Conjunctivitis (46%), Disorders of Skin & Subcutaneous tissues (15.2%), Acute Pharyngitis/Tonsillitis (31%), and Skin Infections (33%). This highlights the success of enhanced preventive measures such as use of face masks, physical distancing, and hand washing during the covid-19 outbreaks. However, the incidence of these diseases is on the rise as compared to 2021. The other diseases related to respiratory, and WASH is also on rise as compared to 2021. The rise in the number of cases could be attributed to many factors such as change in behavior, reduced compliance to the preventive measures after relaxation of Covid-19 protocols, increase in number of people seeking health care services and accessibility to services. Appropriate measures to sustain the positive impact of these preventive measures are deemed necessary.

Trend in selected morbidity cases (non-communicable diseases)

While the cases of selected non-communicable diseases in 2022 have remained below the number of cases seen in 2018, the cases are on rise as compared to 2021. The number of diabetes has increased by 3230 as compared to 9143 in 2021. The number of diabetes cases has increased drastically as compared to 5716 cases in 2018 (increased to 12373 cases in 2022). Further hypertension cases have also increased by 12% compared to 2021. The total cases of alcohol liver disease and rheumatic heart disease have declined by 0.26% and 16% respectively in 2022 as compared to 2021.

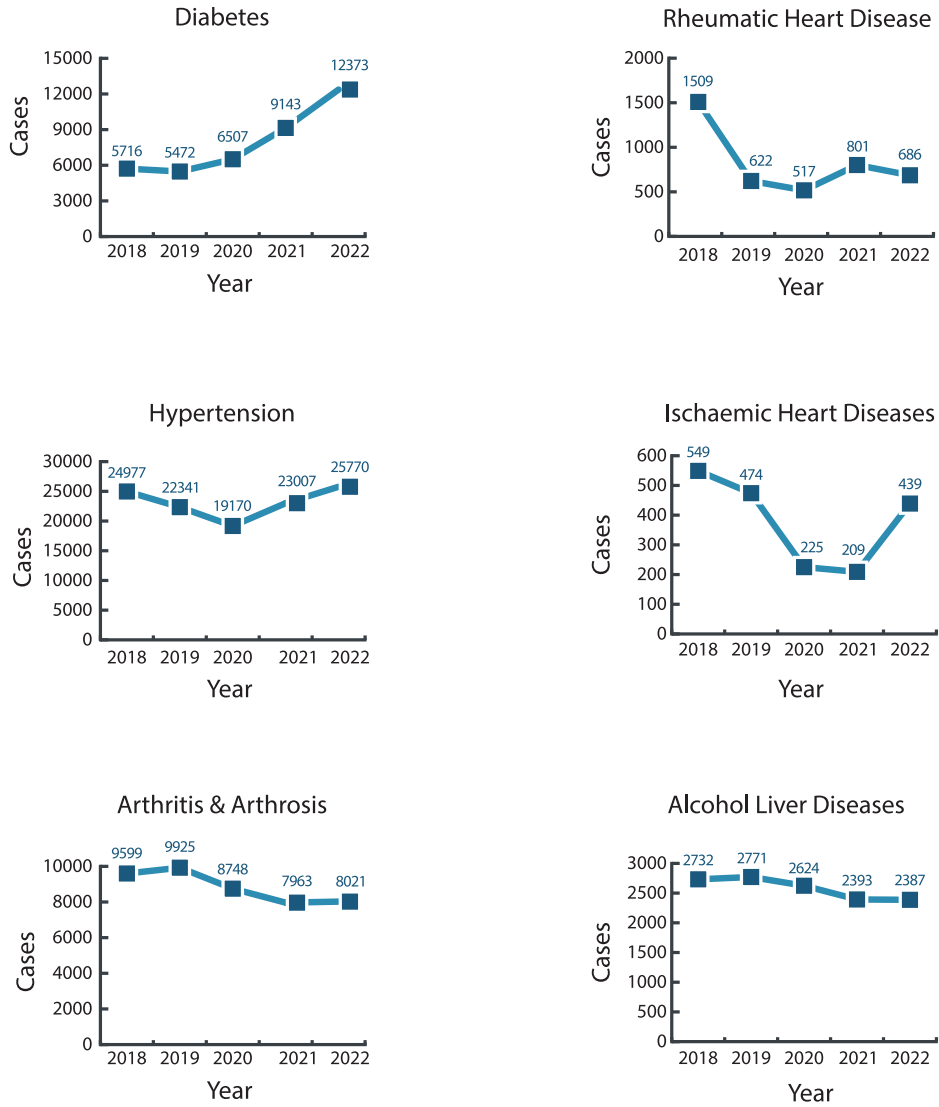


Figure 5: Trend in total cases of NCDs over the years

Trend in Mortality recorded by Health facilities.

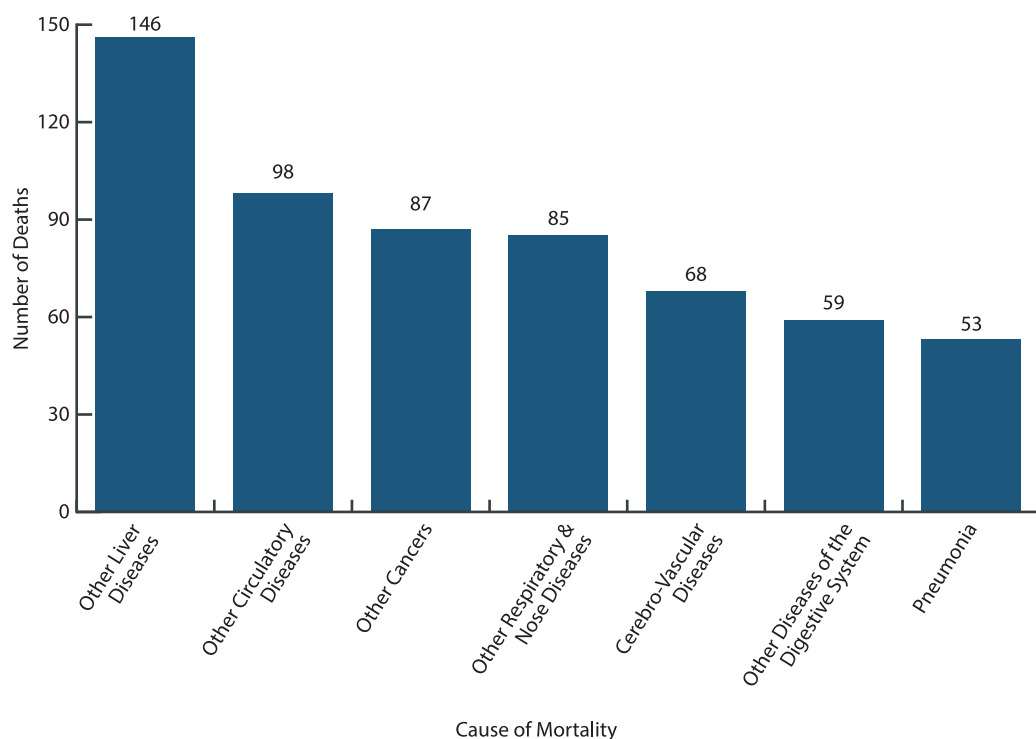


Figure 6: Top causes of mortality

Health facilities around the country record and report the deaths occurring in health facilities. However, due to various reasons, many of the deaths occurs outside health facilities and therefore remains unrecorded. In 2022, only 1194 deaths were reported by the health facilities. This is 6percent higher than the number of deaths recorded in 2021. The PHCB recorded 4894 deaths (in the past year). Therefore, the total number of deaths recorded in health facility was approximately 24percent of the total deaths occurring in the country. Alcohol liver disease remain the leading cause of deaths reported by health facilities, accounting for 12.22% of the deaths. The total neonatal deaths in the country reduced by more than 50% in 2022 as compared to 2021.

Malaria

The Vector-borne Disease Control Program (VDCP) has been gearing towards malaria free Bhutan by 2025. The VDCP through its concerted efforts has reduced the cases of malaria from approximately 39000 cases in 1990’s to less than 5 cases in 2022. However, sporadic upsurge in the number of cases continues to be detected due to various factors. The malaria elimination target was hampered due to high number of indigenous cases in 2020 (22 cases).

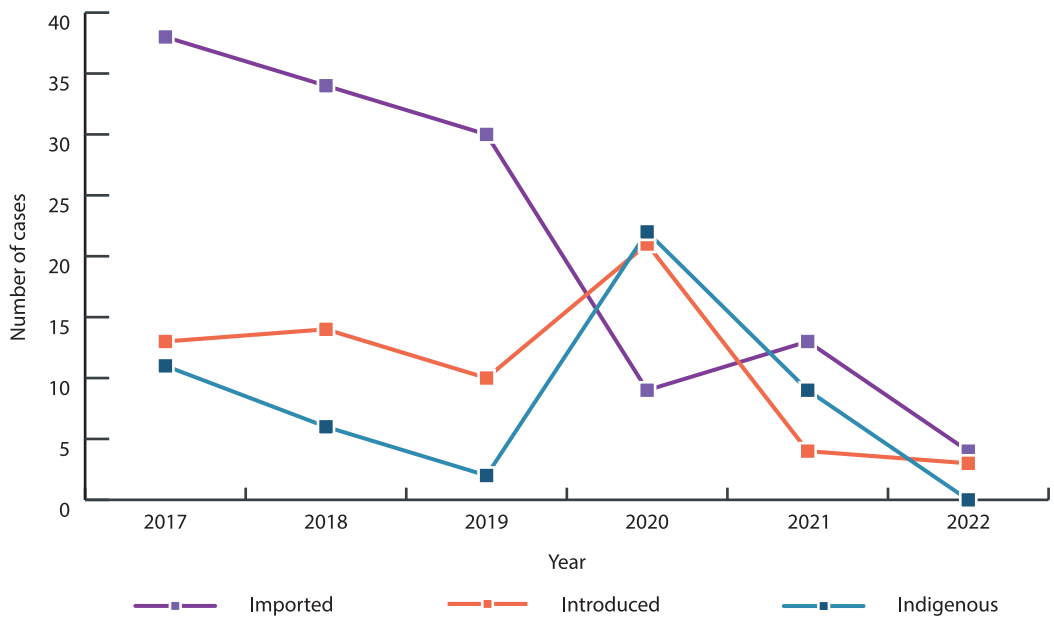


Figure 7: Trend in malaria cases since 2017 by type of cases.

SECTION 1: HEALTH INDICATORS

Table 1.1: Sustainable Development Goals and the corresponding national health indicators in Bhutan as of 2022

SDG Goals	SDG Targets	SDG Indicators	National Equivalent SDG	2022	Source
Goal 3. Ensure healthy lives and promote well-being for all at all ages	3.1 By 2030, reduce the global maternal mortality ratio to less than 70 per 100,000 live births	3.1.1 Maternal mortality ratio (Per 100,000)	3.1.1 Maternal Mortality Ratio (Per 100,000)	89	PHCB 2017
			Number of maternal death	7	MPNDSR 2022
		3.1.2 Deliveries attended by skilled health worker (%)	3.1.2 Deliveries attended by skilled health worker (%)	98.4	HMIS 2022
			Institutional delivery (%)	97.5	HMIS 2022
	3.2 By 2030, end preventable deaths of newborns and children under 5 years of age, with all countries aiming to reduce neonatal mortality to at least as low as 12 per 1,000 live births and under-5 mortality to at least as low as 25 per 1,000 live births	3.2.1 Under-5 mortality rate (Per 1000)	3.2.1 Under-5 mortality rate (Per 1000)	34.1	PHCB 2017
			3.2.2 Neonatal Mortality Rate (Per 1000)	21	NHS 2012

SDG Goals	SDG Targets	SDG Indicators	National Equivalent SDG	2022	Source
Goal 3. Ensure healthy lives and promote well-being for all at all ages	3.3 By 2030, end the epidemics of AIDS, tuberculosis, malaria and neglected tropical diseases and combat hepatitis, waterborne diseases and other communicable diseases	3.3.1 Number of new HIV infections per 1,000 uninfected population, by sex, age and key populations	Total new cases	79	NACP 2022
			Total new cases (male)	42	NACP 2022
			Total new cases (female)	37	NACP 2022
			Total new cases of HIV among Young adults (15-24)	5	NACP 2022
		3.3.2 Tuberculosis incidence per 100,000 population	Total TB cases detected	809	NTBCP 2022
		3.3.3 Malaria incidence per 1,000 population	Malaria incidence (indigenous) per 1,000 risk population	0	VDCP 2022
		3.3.4 Hepatitis B incidence per 100,000 population	Total morbidity cases with Acute Hepatitis B	9.6	HMIS 2022
	3.4 By 2030, reduce by one third premature mortality from non-communicable diseases through prevention and treatment and promote mental health and well-being	3.4.1 Mortality rate attributed to cardiovascular disease, cancer, diabetes or chronic respiratory disease	Total mortality due to Rheumatic heart disease and ischamatic heart disease	26	HMIS 2022
			Total mortality due to Cancer	147	HMIS 2022
			Mortality due to diabetes	21	HMIS 2022
			Mortality due to respiratory disease	153	HMIS 2022
		3.4.2 Suicide mortality rate	Suicide mortality rate per 100,000 population	10.4	NSR 2022
	3.5 Strengthen the prevention and treatment of substance abuse, including narcotic drug abuse and harmful use of alcohol		Percentage of population aged 15-75 years who ever used drugs/ substance to get high	2.1	BMIS 2010

SDG Goals	SDG Targets	SDG Indicators	National Equivalent SDG	2022	Source
Goal 3. Ensure healthy lives and promote well-being for all at all ages	3.6 By 2030, halve the number of global deaths and injuries from road traffic accidents	3.6.1 Death rate due to road traffic injuries (per 100,000 population)	Death rate due to road traffic injuries (per 10,000 vehicles)	6.8	RSTA Annual Report 2021-2022
	3.7 By 2030, ensure universal access to sexual and reproductive health-care services, including for family planning, information and education, and the integration of reproductive health into national strategies and programmes	3.7.1 Proportion of women of reproductive age (aged 15–49 years) who have their need for family planning satisfied with modern methods	Contraceptive prevalence rate (aged 15-49)	65.6	BMIS 2010
			Unmet need for family planning	11.7	BMIS 2010
			Percentage of women aged 15-49 years who knew at least one contraceptive method that could prevent or delay pregnancy	96.3	NHS 2012
		3.7.2 Adolescent birth rate (aged 15– 19 years) per 1,000 women in that age group	3.7.2 Adolescent birth rate (aged 15– 19 years) per 1,000 women in that age group	14.2	PHCB 2017
3.8 Achieve universal health coverage, including financial risk protection, access to quality essential health-care services and access to safe, effective, quality and affordable essential medicines and vaccines for all	3.8.1 Coverage of essential health services (defined as the average coverage of essential services based on tracer interventions that include reproductive, maternal, newborn and child health, infectious diseases, non-communicable diseases and service capacity and access, among the general and the most disadvantaged population)	Percentage of population within 2 hours to the nearest health facility	87.7	NHS 2012	

SDG Goals	SDG Targets	SDG Indicators	National Equivalent SDG	2022	Source
Goal 3. Ensure healthy lives and promote well-being for all at all ages	"3.9 By 2030, substantially reduce the number of deaths and illnesses from hazardous chemicals and air, water and soil pollution and contamination"	3.9.3 Mortality rate attributed to unintentional poisoning	Number of death due to unintentional poisoning	1	HMIS 2022
	3.a Strengthen the implementation of the World Health Organization Framework Convention on Tobacco Control in all countries, as appropriate	3.a.1 Age standardized prevalence of current tobacco use among persons aged 15 years and older	The prevalence of current use of any tobacco product among 15-69 years population	23.9	STEPS 2019
			Population aged 15-69 years who are current smoker [percent]	10.6	STEPS 2019

SDG Goals	SDG Targets	SDG Indicators	National Equivalent SDG	2022	Source
Goal 3. Ensure healthy lives and promote well-being for all at all ages	3.b Support the research and development of vaccines and medicines for the communicable and non-communicable diseases that primarily affect developing countries, provide access to affordable essential medicines and vaccines, in accordance with the Doha Declaration on the TRIPS Agreement and Public Health, which affirms the right of developing countries to use to the full the provisions in the Agreement on Trade Related Aspects of Intellectual Property Rights regarding flexibilities to protect public health, and, in particular, provide access to medicines for all	3.b.1 Proportion of the target population covered by all vaccines included in their national programme	Crude childhood immunization coverage	96.69	VPDP 2022
			Proportion of 1 year-old children immunized against measles (MR1)	97.06	VPDP 2022
			BCG	99.1	VPDP 2022
			Penta/DTP-HipB1	98.2	VPDP 2022
			Penta/DTP-HipB2	99	VPDP 2022
			Penta/DTP-HipB3	97.9	VPDP 2022
			OPV0	90	VPDP 2022
			OPV1	100	VPDP 2022
			OPV2	100	VPDP 2022
			OPV3	100	VPDP 2022
			Crude HPV vaccination coverage	90	VPDP 2022
		Crude maternal TT2 coverage	100	VPDP 2022	
		3.b.3 Proportion of health facilities that have a core set of relevant essential medicines available and affordable on a sustainable basis	Proportion of essential medicines available in all health facilities at any point of time	97	Program

SDG Goals	SDG Targets	SDG Indicators	National Equivalent SDG	2022	Source
Goal 3. Ensure healthy lives and promote well-being for all at all ages	3.c Substantially increase health financing and the recruitment, development, training and retention of the health workforce in developing countries, especially in least developed countries and small island developing States	3.c.1 Health worker density and distribution	Doctors density per 10,000 population	4.6	HRD
			Pharmacists density per 10,000 population	3.1	HRD
			Health Assistants density per 10,000 population	8.5	HRD
			Indigenous Physicians density per 10,000 population	1.0	HRD
			Sowa Menpa density per 10,000 population	2.3	HRD
			Distribution of health facilities per 10,000 population	3.8	DMS
			Ratio of beds per Nurse	1.08	HRD & DMS
			Ratio of Nurses per Doctor	4.33	HRD & DMS

SDG Goals	SDG Targets	SDG Indicators	National Equivalent SDG	2022	Source
Goal 6. Ensure availability and sustainable management of water and sanitation for all	6.1 By 2030, achieve universal and equitable access to safe and affordable drinking water for all	6.1.1 Proportion of population using safely managed drinking water services	Proportion of population using safely managed drinking water services (%)	70.3	STEPS 2019
			Proportion of population using improved drinking water sources (%)	99.3	STEPS 2019
	6.2 By 2030, achieve access to adequate and equitable sanitation and hygiene for all and end open defecation, paying special attention to the needs of women and girls and those in vulnerable situations	6.2.1 Proportion of population using safely managed sanitation services, including a hand washing facility with soap and water	Proportion of population using an improved sanitation facility (%)	94.6	STEPS 2019
			Proportion of population using safely managed sanitation services (%)	91.9	STEPS 2019
			Proportion of population having a handwashing facility on premises	99.5	STEPS 2019
			Proportion of population having a handwashing facility on premises with soap and water available (basic handwashing facility)	90.6	STEPS 2019

Table 1.2: Selected Health indicators and their trend for past five years

Sl. #	Indicators	2018	2019	2020	2021	2022	Source
1	Alcohol Liver Diseases incidence (per 10,000 population)	37.5	38.2	35.2	31.35	31.3	HMIS, MoH
2	Cancer incidence (per 10,000 population)	23.0	20.9	20.6		21.3	HMIS, MoH
3	Conjunctivitis incidence (per 10,000 population)	311.0	305.7	180.6	167.99	160.1	HMIS, MoH
4	Diabetes incidence (per 10,000 population)	78.0	75.3	84.6	119.79	162.1	HMIS, MoH
5	Diarrhoea incidence (per 10,000 under 5 children)	1392.0	584.4	347.4	1175	381.1	HMIS, MoH
6	Depression incidence (per 10,000 population)	9.6	10.5	16.4	31.57	27.3	HMIS, MoH
7	Hypertension incidence per 10,000 population	343.0	307.2	258.4	301.4	337.6	HMIS, MoH
8	Intestinal Worms incidence (per 10,000 under 5 children)	48.0	32.9	31.3	30.86	29.8	HMIS, MoH
9	Pneumonia incidence (per 10,000 under 5 children)	503.0	678.0	280.0	330	55.2	HMIS, MoH
10	Skin infections (per 10,000 population)	1079.0	1130.3	934.8	888.32	772.4	HMIS, MoH
11	Tuberculosis incidence rate (per 10,000 population)					9.1	HMIS, MoH

* Population projection 2022=763249, 2021=, 2020=, 2019=, 2018=.

Table 1.3: Selected health indicators and their trend

Sl. #	Indicators	2017	2018	2019	2020	2021	2022	Source
1	Proportion of population using improved drinking water sources (%)	95	98	98	99	99	99	STEPS
2	Proportion of population using an improved sanitation facility (%)					94.6	94.6	STEPS
3	Antenatal care attendance/ coverage at least once by skilled health personnel (Numbers) [ANCI]		12181	10923	11210	10858	9809	HMIS, MoH
4	Births by caesarean section (Numbers)		2486	2360	2686	2683 (23.4%)	2337 (24.2%)	HMIS, MoH
5	Contraceptive prevalence rate (%)	65.6	65.6	65.5	65.5	65.5	65.5	NHS,2000; PHCB, 2005; BMIS, 2010
6	Deliveries attended by skilled health personnel (%)	89	96.3	96.3	99.3		98.4	BMIS, 2010; MoH, PHCB2017, HMIS
7	Institutional deliveries (%)	81	94.5	94.5	94.5	94.5	97.5	HMIS, MoH; BMIS, 2010; MoH

Sl. #	Indicators	2017	2018	2019	2020	2021	2022	Source
8	Number and distribution of inpatient (IPD) beds (per 10,000 population)		1380 [18.9]		"1640 [22.54]"		"1650 [21.6]"	HMIS, MoH
9	Number and distribution of health facilities providing traditional medicine services (per 10,000 population)		"66 [0.9]"	"70 [0.96]"	"76 [1.05]"	"76 [1.05]"	"80 [1.05]"	HMIS, MoH
10	Number of health facilities providing VCT/PIHCT services	240	240	240	235	237	53	NACP (DoPH), MoH
11	Number of health facilities providing comprehensive PMTCT package	30	29	32	49	51	53	NACP (DoPH), MoH
12	Tuberculosis (all forms of TB) notification rate (per 100,000 population)				126		105.1	NTCP (DoPH), MoH
13	Unmet need for family planning (%)	11.7			11.7	11.7	11.7	BMIS, 2010
14	Neonatal mortality rate					21	21	NHS 2012

Table 1.4: Health workforce indicators and their trend over the past 5 years (2018-2022)

Sl. #	Indicators	2018	2019	2020	2021	2022	Source
1	Number of Doctors and [density per 10,000 population]	"337 [4.6]"	"318 [4.32]"	"336 [4.62]"	"354 [4.64]"	"354 [5.34]"	HRM, MoH
2	Number of Nurses and [density per 10,000 population]	1202 [16.5]	1364 [18.6]	"1517 [20.9]"	"1608 [21.07]"	"1533 [23.11]"	HRM, MoH
3	Number of Pharmacists and [density per 10,000 population]	"44 [0.6]"	"43 [0.6]"	"42 [0.6]"	"46 [0.6]"	"45 [0.68]"	HRM, MoH
4	Number HA [density (per 10,000 population)*]	"604 [8.3]"	"620 [8.4]"	"650 [8.9]"	"683 [8.95]"	"647 [9.75]"	HRM, MoH
5	Number of Drungtshos (Indigenous Physicians) and [density per 10,000 population]	"53 [0.7]"	"54 [0.7]"	"52 [0.7]"	"59 [0.77]"	"79 [1.19]"	HRM, MoH
6	Number of sMenpas (Sowa Menpas) and [density per 10,000 population]	"113 [1.5]"	"116 [1.6]"	"137 [1.9]"	"146 [1.9]"	"175 [2.64]"	HRM, MoH
7	Number and distribution of health facilities (per 10,000 population)	"279 [3.8]"	"288 [3.9]"	"289 [4.0]"	"289 [3.85]"	"291 [4.39]"	HMIS, MoH

* Includes Clinical Officer (CO) and BHW. There is no BHW category from 2019 as all were upgraded to HA.

SECTION 2: MORBIDITY AND MORTALITY

Table 2.1: Total Morbidity at National Level

ICD10 CODE	0-29 Days		1-11 Mts		1-4 Years		5-9 Years		10-14 Years		15-19 Years		20-24 Years		25-49 Years		50-59 Years		60+ Years		
	M	F	M	F	M	F	M	F	M	F	M	F	M	F	M	F	M	F	M	F	
Infectious Disease																					
A02 ^G	68	66	928	906	3303	2800	2007	1753	1717	1378	1230	997	991	920	2722	2928	801	865	1318	1387	
A03 ^G	6	1	59	41	151	138	122	122	131	109	143	147	178	153	366	408	179	167	179	187	
A15 ^G	1		3		1	1	1	2	3	7	29	44	57	68	153	129	37	31	76	52	
A41 ^G	41	34	19	17	33	20	10	6	1	2	3	8	2	5	45	48	14	23	35	41	
A50	2			2	1																
A51 ^G					2	1	1	1			4	3	4	14	47	41	12	3	7	3	
A53 ^G	1						5	5			2	2	5	14	24	40	13	13	12	14	
A54 ^G				1	6	9	2	12	3	201	34	449	213	683	730	1712	90	527	36	224	
A63 ^G	1	1								2	11	3	46	42	204	208	27	30	27	14	
A77 ^G			2	2	13	13	7	9	6	8	7	6	12	8	67	66	19	26	24	28	
Viral, Protozoal & Helminthic Diseases																					
B01	1	1	20	22	158	163	381	360	346	358	174	173	77	49	49	67	6	5	12	1	
B15								1					1		7	4	2	1	1		
B16												1	1		25	18	13	9	3	3	
B17 ^G												2			17	10	4	4	4		
B50			1									5				4		2	1		

ICD10 CODE	Name of the Diseases	0-29 Days		1-II Mts		1-4 Years		5-9 Years		10-14 Years		15-19 Years		20-24 Years		25-49 Years		50-59 Years		60+ Years		
		M	F	M	F	M	F	M	F	M	F	M	F	M	F	M	F	M	F	M	F	
B51	Plasmodium Vivax Malaria														2		1	1	2	1		
B53 ^G	Other Malaria			2	2	1						1		1	1	4	5				1	1
B55	Visceral Leishmaniasis (Kala-azar)																					
B65 ^G	Intestinal Worms	10	10	88	124	158	175	194	146	151	130	158	162	238	232	101	81	65	53			
B86	Scabies	50	56	265	246	723	532	1075	691	777	517	275	232	472	774	186	154	231	166			
B95	Streptococcus Group ^{AB}	1	1	4		3	4	2	4	10	3	4	1	6	12	1	2	3	2			
BZZ ^G	Other Infections (excludes ear, brain, STI)	13	22	233	247	770	492	392	398	268	252	297	384	1306	1402	335	354	404	406			
Neoplasms																						
C15 ^G	Oesophagus Cancer																7	4	5	1	21	7
C16 ^G	Stomach/ Gastric Cancer					10	6	17	6	1	17	20	30	82	109	52	48	145	84			
C18 ^G	Colon Cancer													23	12	12	5	21	18			
C20	Rectal Cancer											1		11	6	14	14	21	8			
C24 ^G	Hepato-Biliary Cancer																2	4	4	4		
C25 ^G	Pancreatic Cancer													1				2	4			
C50 ^G	Breast Cancer												1			23	16	23				
C53 ^G	Cervical Cancer															67	25	24				
CZ2 ^G	Other Cancers	1	1	11	7	4	5	5	7	9	2	6	6	72	87	35	44	188	123			
Diseases of the Blood & Blood-forming Organs																						
D00 ^G	Neoplasm (benign + CIS)			2	2	3	1	6	20	21	24	7	30	33	168	9	45	28	46			
D50 ^G	Nutritional Anaemia	1	6	11	54	87	101	136	306	240	682	227	705	655	2605	294	607	537	699			
D55 ^G	Blood & Immune Disorders	1	11	6	20	14	16	21	27	27	47	10	51	101	246	47	66	77	90			

ICD10 CODE	Name of the Diseases	0-29 Days		1-4 Years		5-9 Years		10-14 Years		15-19 Years		20-24 Years		25-49 Years		50-59 Years		60+ Years	
		M	F	M	F	M	F	M	F	M	F	M	F	M	F	M	F	M	F
Endocrine, Nutritional & Metabolic Diseases																			
E10 ^e	Diabetes ^b			1	4	2	1	4	3	5	8	13	22	1631	2139	1957	2229	2277	2077
E40 ^e	Malnutrition (excludes child clinic attendance)	4	6	18	10	5	14	5	7	11	10	2	7	11	22	9	5	8	7
EZZ ^g	Other Nutritional & Metabolic Disorders ^b	7	5	54	74	135	147	108	168	220	269	126	183	571	877	205	254	308	348
Mental & Behavioural Disorders																			
F03 ^g	Dementia													10	2	6	4	16	21
F10	Mental and Behavioral Disorders due to Alcohol					1	4	3	3	18	14	70	44	1198	382	175	105	84	56
F19	Mental and Behavioral Disorders due to Multiple Drug use & other use of Psychoactive substances						1	5	14	80	43	136	47	240	55	38	28	11	4
F20 ^g	Psychosis					3	3		3	24	30	62	38	209	167	47	59	14	41
F31 ^g	Depression						2	13	34	97	150	136	173	294	633	194	180	66	110
F40 ^g	Anxiety					1	3	6	38	80	129	268	189	282	671	1087	170	229	126
FZZ ^g	Other Mental Disorders	3	1	42	29	23	22	22	60	86	102	101	101	351	505	101	116	108	117
Diseases of the Nervous System																			
G00 ^g	Meningitis/Encephalitis	1	2	9	7	8	7	3	5	6	6	4	3	22	33	5	8	12	25
G40 ^g	Epilepsy ^b			12	15	31	34	31	20	43	129	85	139	494	543	125	95	66	65
GZZ ^g	Other Nervous Disorders (includes Peripheral disorders)	13	10	174	177	618	650	1224	1401	1783	2706	1668	3024	10010	20703	3260	4615	4301	5292

ICD10 CODE	Name of the Diseases	0-29 Days		1-11 Mts		1-4 Years		5-9 Years		10-14 Years		15-19 Years		20-24 Years		25-49 Years		50-59 Years		60+ Years	
		M	F	M	F	M	F	M	F	M	F	M	F	M	F	M	F	M	F	M	F
Diseases of the Eye & Ear																					
H10	Conjunctivitis	27	17	120	128	388	375	484	436	592	549	603	533	546	574	1650	1868	633	783	904	1007
H25 ⁶	Cataract ⁶			1	3	10	25	38	42	60	57	86	115	95	158	188	175	177	435	428	
H52 ⁶	Disorders of Refraction & Accommodation (Refractive Error in the Eye)			5	4	8	21	72	103	148	232	240	390	278	349	751	1078	449	509	557	528
H2Z ⁵	Other Eye Disorders	40	37	267	264	772	758	1059	993	1489	1732	1711	1907	1609	1734	6577	8879	2819	3488	4902	5791
H65 ⁶	Otitis Media	4	95	129	356	405	622	607	676	627	612	563	558	504	1162	1270	391	419	400	359	
H90 ⁶	Other Ear Disorders	4	4	99	117	508	525	834	922	922	912	826	794	714	724	1753	1980	665	585	756	696
Diseases of the Circulatory System																					
I00 ⁶	Rheumatic Heart Disease ⁶	1	4	3	16	12	17	17	6	12	9	5	10	21	38	93	111	75	83	89	81
I10 ⁶	Hypertension						13	4	5	8	26	52	104	158	4144	5228	3331	3533	4529	4635	
I20 ⁶	Ischaemic Heart Diseases ⁶						1	2	2	2	2	2	3	2	8	79	69	39	35	107	90
I60 ⁶	Cerebro-vascular Diseases ⁶			1	2	4	1	1	2	1	2	2	1	1	4	66	51	56	42	202	140
I88 ⁶	Bubo												1	1	2	13	21	6	6	16	10
IZZ ⁵	Other Circulatory Diseases	9	26	25	69	41	49	59	58	109	98	111	116	156	837	1193	238	329	558	640	
Diseases of the Respiratory System																					
J00	Common Cold	228	294	5095	5226	14264	13668	12799	13646	10276	9922	8564	7356	6755	6930	22766	29221	6750	7180	8230	8604
J02 ⁶	Acute Pharyngitis/Tonsillitis	4	11	270	268	1398	1406	2575	2698	2455	2585	2396	2102	1711	2019	5939	8607	1427	1648	1480	1380
J12G	Pneumonia	14	8	366	343	864	713	256	225	75	79	36	48	34	41	178	200	70	98	266	298
J45	Asthma	2	8	12	44	19	49	49	46	24	26	23	26	20	40	180	390	187	271	423	521
JZZ ⁵	Other Respiratory & Nose Diseases	136	125	1469	1451	3740	3422	3304	3378	2834	2803	2530	2358	1939	2266	7189	10744	2110	2515	3650	3873

ICD10 CODE	Name of the Diseases	0-29 Days		1-11 Mts		1-4 Years		5-9 Years		10-14 Years		15-19 Years		20-24 Years		25-49 Years		50-59 Years		60+ Years	
		M	F	M	F	M	F	M	F	M	F	M	F	M	F	M	F	M	F	M	F
Diseases of the Digestive System																					
K00 ^G	Diseases of Teeth & Gums	2	1	56	59	1002	1026	2380	2412	1417	1570	1438	1646	1429	1673	3824	4880	1466	1565	1990	1739
K02	Dental Caries			1015	1158	3009	3087	3087	3087	1773	2010	1822	2474	1921	2455	5596	7712	1995	2012	2505	2224
K20 ^G	Peptic Ulcer Syndrome	3	2	15	20	142	181	441	538	908	1206	1898	2036	2209	2493	8116	10221	2812	3252	3040	3450
K35	Acute Appendicitis ^b			1	3	8	6	39	27	67	52	60	68	54	81	306	308	63	49	52	55
K70	Alcoholic Liver Disease										2	2	7	31	36	787	506	327	242	253	194
K80 ^G	Gall Bladder Diseases ^b	3	3			2	1	4	6	3	2	8	11	22	32	180	486	81	124	119	193
KZZ ^G	Other Diseases of the Digestive System	79	90	698	759	3052	2851	3468	3972	3686	4398	3728	4174	3197	3882	12532	16973	3916	4371	5632	6047
Diseases of the Skin & Subcutaneous Tissue																					
L00 ^G	Skin Infections	104	106	807	841	3009	2771	4001	3540	4189	3683	3410	2928	2619	2358	7769	7704	2344	2148	2579	2046
LZZ ^G	Other Disorders of Skin and Subcutaneous Tissue	135	129	1320	1428	3996	3797	3883	3945	4330	4359	3913	3836	3204	3497	11450	14820	3354	3611	4475	4197
Diseases of the Musculo-skeletal System & Congenital Deformities																					
M00 ^G	Arthritis & Arthrosis			3	1	17	13	39	47	100	100	181	178	237	265	1499	1416	809	833	1188	1095
MZZ ^G	Other Musculo-Skeletal Disorders	3	5	54	27	301	315	803	726	1664	1499	2684	2360	3420	3106	17091	18808	6193	6556	8482	8111
Diseases of the Genito-Urinary System																					
N30	Cystitis ^b			4	3	5	9	10	22	7	14	18	31	19	93	108	467	31	72	35	59
N61 ^G	Infections of the Breast (includes Puerperium)							2			3	10			51		161		9		7
N62 ^G	Other diseases of the Breast					1		1	5	3	10	1	49	7	136	14	559	3	42	3	23
N70 ^G	Pelvic Inflammatory Disease ^b								68		217		415		529		834		520		123

ICD10 CODE	0-29 Days		1-11 Mts		1-4 Years		5-9 Years		10-14 Years		15-19 Years		20-24 Years		25-49 Years		50-59 Years		60+ Years		
	M	F	M	F	M	F	M	F	M	F	M	F	M	F	M	F	M	F	M	F	
N91 ^G							66		277			632		875		2153		610		172	
NZZ ^G	8	6	28	47	252	288	375	497	372	645	465	1208	782	2334	3370	12014	5601	2051	1640	1954	
Pregnancy, Childbirth & the Puerperium																					
O00 ^G										1		29		127		692					
O13 ^G										2		8		62		390					
O20 ^G												3		48		200					
O32												3		13		104					
O63												4		51		140					
O64 ^G												3		14		39					
O72												1		20		66					
O73												2		9		49					
O85 ^G												2		13		53					
OZZ ^G										5		217		1434		5377					
Certain Conditions Originating in the Perinatal Period																					
P05		169		152																	
P95			7	9																	
P96			26	17																	
PZZ ^G		1510		1354																	

ICD10 CODE	Name of the Diseases	0-29 Days		1-11 Mts		1-4 Years		5-9 Years		10-14 Years		15-19 Years		20-24 Years		25-49 Years		50-59 Years		60+ Years		
		M	F	M	F	M	F	M	F	M	F	M	F	M	F	M	F	M	F	M	F	
Congenital Malformations, Deformations & Chromosomal Abnormalities																						
Q36 ^G	Oro-facial Clefts	1		6	5																	
Q45 ^G	Gastrointestinal Tract defects	1			3	1																
Q66 ^G	Talipes Equinovarus																					
Q79 ^G	Omphalocele		1																			
QZZ ^G	Other Malformations	19	23	31	25	77	47	26	21	9	8	3	3	4	3	11	35	2	6	2	2	
Injury, Poisoning & certain other consequences of External Causes																						
T65	Mushroom Poisoning (Toxic effect of other unspecified substances)						4	5	4	2	2	7		6	4	13	21			10	4	4
V01 ^G	Transport Accidents			4	1	23	25	43	39	33	22	64	39	166	76	688	280	107	58	43	33	33
W00 ^G	Accidental Falls	1	1	16	39	295	198	431	264	436	192	310	179	287	149	1032	648	270	216	445	363	363
W50 ^G	Other Bites and Sting (excludes dog bite)	1	1	12	15	182	177	258	207	218	158	155	148	157	167	630	663	170	179	207	211	211
W54	Dog Bites	1		1	8	203	221	592	430	362	285	254	253	386	346	1185	767	317	212	341	210	210
W65 ^G	Accidental Drowning & Submersion						4	4	5	4	5	8	2	2	4	15	10	6	3	4	1	1
W85 ^G	Exposure to Electric Current					2		5	1	11	1	3	3	5	6	23	5	4	2			1
X00 ^G	Contact with Heat & Hot substances and exposure to Smoke, Fire & Flames			35	18	200	132	89	82	94	74	60	70	104	100	264	262	58	58	56	55	55
Y20	Snake Bite			1		2	1	1	2	1	4	11	8	18	7	70	38	22	16	14	7	7
Y21 ^G	Contact with Venomous Animals and Plants (excludes snake bite)					2	1	1														

ICD10 CODE	Name of the Diseases	0-29 Days		1-11 Mts		1-4 Years		5-9 Years		10-14 Years		15-19 Years		20-24 Years		25-49 Years		50-59 Years		60+ Years		
		M	F	M	F	M	F	M	F	M	F	M	F	M	F	M	F	M	F	M	F	
X40 ^G	Accidental Poisoning by and Exposure to Noxious substances			3	1	8	9	4	5	3	1	3	2	2	8	16	11	4	1	3	1	
X60 ^G	Intentional Self-harm by Poisoning					3	3					3	5	7	12	14	18	3		2	1	
X71	Intentional Self-harm by Drowning & Submersion									1				1	1	2						
X90	Assault by Poisoning (includes homicidal poisoning)					1	2				1					2	4					
X92	Assault by Drowning and Submersion											1		1	1	1						
XZZ ^G	Other Intentional Self-harm					1		2	3	6	4	14	10	34	11	98	41	24	4	14	4	
Y96	Work Related Injuries	1		5	7	152	106	504	323	845	490	1200	553	1795	731	7210	2880	1539	808	1459	693	
YYY ^G	Others (injuries other than above & unknown cause of injury)		3		36	484	350	1033	588	1271	591	1180	584	1207	677	4464	2526	954	633	905	540	
Other Conditions																						
YYZ ^G	Complications of Health Care	13	15	14	20	35	39	20	12	21	14	21	13	22	33	138	198	46	33	68	37	
ZZZ ^G	ANC, Immunization & Other Counselling	588	576	3428	3388	4584	4587	1393	1412	1140	1298	940	1403	1100	4470	6687	24391	1918	3116	2956	3295	

Table 2.2: Out-Patient cases seen in all Hospital, 2022

ICD10 CODE	Name of the Diseases	0-29 Days		1-11 Mts		1-4 Years		5-9 Years		10-14 Years		15-19 Years		20-24 Years		25-49 Years		50-59 Years		60+ Years	
		M	F	M	F	M	F	M	F	M	F	M	F	M	F	M	F	M	F	M	F
Infectious Disease																					
A02 ^G	Diarrhoea	66	63	815	838	2948	2534	1861	1627	1602	1300	1144	904	910	835	2443	2704	730	786	1194	1219
A03 ^G	Dysentery	6		57	37	132	122	112	115	123	102	133	140	164	139	320	374	165	150	162	172
A15 ^G	Tuberculosis ^B					1			1		1	3	7	15	14	26	24	12	18	14	9
A41 ^G	Other Sepsis (includes Septicaemia)										1	1			1	3		1			2
A50	Congenital Syphilis																				
A51 ^G	Genital Ulcer								1			2	2	3	14	38	36	10	2	6	2
A53 ^G	Syphilis								5			2	2	4	14	22	40	13	13	11	12
A54 ^G	Urethral/Vaginal Discharges					1	6	9	2	3	194	33	439	209	662	704	1652	83	514	36	222
A63 ^G	Other Sexually Transmitted Disease (excludes HIV/AIDS)										2	11	3	45	39	192	192	25	26	25	6
A77 ^G	Rickettsial Disease ^B			1		2		4	2	2	2	1	1	4	3	20	20	8	11	3	10
Viral, Protozoal & Helminthic Diseases																					
B01	Chicken Pox	1	1	19	21	149	151	361	340	330	338	163	148	75	47	47	63	6	5	11	1
B15	Acute Hepatitis ^A									1				1		2	3	1	1	1	
B16	Acute Hepatitis ^B												1	1	8	11	2	6	1	1	
B17 ^G	Other Acute Hepatitis (includes Hepatitis C&E)												1		5	1	1				
B50	Plasmodium Falciparum Malaria																2		1	1	
B51	Plasmodium Vivax Malaria																				

ICD10 CODE	Name of the Diseases	0-29 Days		1-11 Mts		1-4 Years		5-9 Years		10-14 Years		15-19 Years		20-24 Years		25-49 Years		50-59 Years		60+ Years	
		M	F	M	F	M	F	M	F	M	F	M	F	M	F	M	F	M	F	M	F
B53 ^G	Other Malaria			1	1									1	2						
B55	Visceral Leishmaniasis (Kala-azar)																				
B65 ^G	Intestinal Worms	10	10	85	123	152	170	188	139	141	125	135	147	202	194	82	73	60	44		
B86	Scabies	44	50	255	230	653	482	1003	636	726	490	257	217	429	718	171	139	203	142		
B95	Streptococcus Group A/B	1		2		2	4	2	4	10	2	4	1	4	10	1	1		2		
BZZ ^G	Other Infections (excludes ear, brain, STI)	11	18	192	215	622	441	354	367	240	224	259	355	1103	1206	268	297	317	328		
Neoplasms																					
C15 ^G	Oesophagus Cancer																1			1	1
C16 ^G	Stomach/ Gastric Cancer							10	6	17	20	30	62	83	21	33	6	10			
C18 ^G	Colon Cancer														1						
C20	Rectal Cancer																				
C24 ^G	Hepato-Biliary Cancer																				
C25 ^G	Pancreatic Cancer																				
C50 ^G	Breast Cancer									1					1	1	1	2			
C53 ^G	Cervical Cancer														2	1	3				
CZ ^Z	Other Cancers			3		2	2	1	2	2	3	2	12	14	1	1	7	3			
Diseases of the Blood & Blood-forming Organs																					
D00 ^G	Neoplasm (benign + CIS)					2	1	4	16	14	19	4	24	17	76	5	13	15	22		
D50 ^G	Nutritional Anemia			6	48	45	90	117	280	215	629	199	643	566	2425	267	534	477	606		
D55 ^G	Blood & Immune Disorders			7	6	7	5	12	16	16	26	8	26	73	163	33	43	45	66		
Endocrine, Nutritional & Metabolic Diseases																					
E10 ^G	DiabetesB			1	3	2	1	2	2	1	6	10	18	1474	1925	1721	2036	1967	1771		

ICD10 CODE	Name of the Diseases	0-29 Days		1-11 Mts		1-4 Years		5-9 Years		10-14 Years		15-19 Years		20-24 Years		25-49 Years		50-59 Years		60+ Years	
		M	F	M	F	M	F	M	F	M	F	M	F	M	F	M	F	M	F	M	F
E40 ⁶	Malnutrition (excludes child clinic attendance)			1	1	9	7	4	10	4	7	11	8	2	6	10	21	8	4	1	6
EZ2 ⁵	Other Nutritional & Metabolic DisordersB			21	33	114	124	102	154	149	278	211	249	114	174	493	767	170	221	259	292
Mental & Behavioural Disorders																					
F03 ⁶	Dementia															7	1	5	4	12	18
F10	Mental and Behavioral Disorders due to Alcohol								3	1	3	14	14	50	28	646	203	91	57	50	31
F19	Mental and Behavioral Disorders due to Multiple Drug use & other use of Psychoactive substances								1	4	10	58	36	93	40	158	44	33	27	9	
F20 ⁶	Psychosis							2		3	6	20	25	50	33	171	132	41	58	11	35
F31 ⁶	Depression								2	12	26	82	122	111	148	259	537	182	163	57	97
F40 ⁶	Anxiety							1	3	4	33	119	233	178	256	617	994	162	217	119	153
FZZ ⁵	Other Mental Disorders			2		39	28	22	19	18	48	74	70	81	81	285	427	96	99	94	106
Diseases of the Nervous System																					
G00 ⁶	Meningitis/Encephalitis					1	1		2	1		1			1	1	16	4	2	3	3
G40 ⁶	EpilepsyB			5	4	15	16	17	9	30	31	112	69	125	120	415	495	99	79	52	53
GZZ ⁶	Other Nervous Disorders (includes peripheral disorders)																				
		10	6	151	158	544	573	1117	1292	1672	1964	1652	2542	1503	2793	9110	19273	2991	4231	3956	4895
Diseases of the Eye & Ear																					
H10	Conjunctivitis	26	17	117	126	384	365	474	415	572	526	578	524	521	558	1577	1816	617	754	881	977
H25 ⁶	CataractB					1	1	22	34	39	57	55	83	109	91	137	181	158	164	325	313

ICD10 CODE	Name of the Diseases	0-29 Days		1-11 Mts		1-4 Years		5-9 Years		10-14 Years		15-19 Years		20-24 Years		25-49 Years		50-59 Years		60+ Years	
		M	F	M	F	M	F	M	F	M	F	M	F	M	F	M	F	M	F	M	F
H52 ⁶	Disorders of Refraction & Accommodation (Refractive Error in the Eye)			5	3	8	20	72	102	145	227	384	268	342	717	1068	442	500	548	521	
H2Z ⁶	Other Eye Disorders	38	37	262	256	723	726	1002	949	1416	1650	1847	1489	1644	6183	8449	2619	3265	4499	5337	
H65 ⁶	Otitis Media	2	90	121	326	378	583	573	583	649	596	541	525	489	1109	1199	377	401	386	346	
H90 ⁶	Other Ear Disorders	4	4	91	114	468	499	797	873	885	872	763	678	700	1644	1899	640	557	728	661	
Diseases of the Circulatory System																					
I00 ⁶	Rheumatic Heart DiseaseB			4	3	14	11	12	3	11	4	1	5	18	34	68	86	61	69	74	65
I10 ⁶	Hypertension							12	4	4	7	20	48	85	129	3646	4627	2971	3172	3805	3913
I20 ⁶	Ischaemic Heart DiseasesB							1	2			2	3	2	8	49	58	23	21	42	29
I60 ⁶	Cerebro-vascular DiseasesB					1		1		1						8	4	13	10	19	17
I88 ⁶	Bubo											1	1	2	11	18	4	5	10	8	
IZZ ⁶	Other Circulatory Diseases			11	15	45	31	41	44	45	97	86	88	124	624	952	155	207	225	272	
Diseases of the Respiratory System																					
J00	Common Cold	215	287	4728	4828	13187	12669	11854	12717	9594	9217	8080	6827	6142	6349	20883	26812	6256	6655	7572	7925
J02 ⁶	Acute Pharyngitis/Tonsillitis	4	11	240	247	1266	1287	2382	2476	2326	2432	2286	2004	1621	1895	5599	8086	1354	1552	1409	1285
J12G	Pneumonia	2	2	206	209	525	447	167	150	53	46	21	36	18	25	82	106	30	36	75	76
J45	Asthma	2		5	7	21	8	21	31	8	14	21	24	18	34	146	294	161	217	298	348
JZZ ⁶	Other Respiratory & Nose Diseases	113	108	1219	1234	3297	3074	3019	3175	2683	2626	2364	2212	1741	2092	6456	9943	1896	2249	2826	2982
Diseases of the Digestive System																					
K00 ⁶	Diseases of Teeth & Gums	2	1	53	57	962	992	2267	2299	1335	1493	1358	1586	1346	1579	3590	4617	1389	1482	1892	1636
K02	Dental Caries					987	1111	2917	3000	1724	1951	1776	2414	1862	2386	5406	7514	1934	1948	2415	2133

ICD10 CODE	Name of the Diseases	0-29 Days		1-11 Mts		1-4 Years		5-9 Years		10-14 Years		15-19 Years		20-24 Years		25-49 Years		50-59 Years		60+ Years	
		M	F	M	F	M	F	M	F	M	F	M	F	M	F	M	F	M	F	M	F
K20 ⁶	Peptic Ulcer Syndrome	3	2	8	17	102	161	407	508	860	1141	1791	1916	2025	2300	7437	9477	2595	3008	2748	3155
K35	Acute AppendicitisB			1	2	1	1	7	6	14	23	15	25	29	29	78	111	21	22	23	23
K70	Alcoholic Liver Disease										2	2	7	21	26	402	256	174	127	125	86
K80 ⁶	Gall Bladder DiseasesB			1		1		4	3	1		3	2	5	6	27	34	12	8	11	10
KZ5 ⁶	Other Diseases of the Digestive System	45	50	595	657	2686	2530	3151	3644	3421	4108	3477	3920	2891	3566	11155	15446	3477	3935	4915	5381
Diseases of the Skin & Subcutaneous Tissue																					
L00 ⁶	Skin Infections	102	101	753	800	2811	2597	3781	3324	3933	3495	3237	2789	2496	2226	7294	7290	2208	2004	2388	1932
LZ5 ⁶	Other Disorders of Skin and Subcutaneous Tissue	130	125	1273	1380	3823	3609	3658	3740	4086	4120	3715	3654	2998	3338	10623	13959	3109	3379	4114	3880
Diseases of the Musculo-skeletal System & Congenital Deformities																					
M00 ⁶	Arthritis & Arthrosis			1	6	12	29	41	86	84	165	160	212	245	1334	1301	734	775	1049	975	
MZZ ⁶	Other Musculo-Skeletal Disorders	3	4	42	26	270	282	707	667	1539	1411	2531	2191	3180	2878	15826	17572	5706	6069	7688	7364
Diseases of the Genito-Urinary System																					
N30	CystitisB			3	3	7	14	14	5	11	12	21	16	85	86	384	13	57	19	35	
N61 ⁶	Infections of the Breast (includes Puerperium)						2		3		9			37		118		5			7
N62 ⁶	Other diseases of the Breast			1		1	5	3	10	1	42	5	120	11	474	1	39	3	18		
N70 ⁶	Pelvic Inflammatory DiseaseB						66		208		344		459		723		442				123
N91 ⁶	Menstrual Disturbances						66		273		621		850		1984		582				166

ICD10 CODE	Name of the Diseases	0-29 Days		1-11 Mts		1-4 Years		5-9 Years		10-14 Years		15-19 Years		20-24 Years		25-49 Years		50-59 Years		60+ Years	
		M	F	M	F	M	F	M	F	M	F	M	F	M	F	M	F	M	F	M	F
NZZ ⁶	Other Kidney, UT/Genital Disorders	3	3	16	19	182	231	279	453	304	582	404	1078	677	2076	2749	10433	5394	1716	1235	1547
Pregnancy, Childbirth & the Puerperium																					
O00 ⁶	Abortions						1					5	16				80				
O13 ⁶	Pregnancy Induced Hypertension											4	27				120				
O20 ⁶	Ante-Partum Haemorrhage & Placenta Previa													3			8				
O32	Malpresentation												2				9				
O63	Prolonged Labour																5				
O64 ⁶	Obstructed Labour																				
O72	Post-Partum Haemorrhage														1		1				
O73	Retained Placenta												1				3				
O85 ⁶	Puerperal Sepsis																				
OZZ ⁶	Other Complications of Pregnancy												23		139		517				
Certain Conditions Originating in the Perinatal Period																					
P05	Low Birth Weight		4																		
P95	Foetal Death & Stillbirth																				
P96	Neonatal Death		1																		
PZZ ⁶	Conditions Originating in the Perinatal period		84																		

ICD10 CODE	Name of the Diseases	0-29 Days		1-11 Mts		1-4 Years		5-9 Years		10-14 Years		15-19 Years		20-24 Years		25-49 Years		50-59 Years		60+ Years	
		M	F	M	F	M	F	M	F	M	F	M	F	M	F	M	F	M	F	M	F
Congenital Malformations, Deformations & Chromosomal Abnormalities																					
Q36 ⁶	Oro-facial Clefts																				
Q45 ⁶	Gastrointestinal Tract defects																				
Q66 ⁶	Talipes Equinovarus																				
Q79 ⁶	Omphalocele																				
QZZ ⁶	Other Malformations	1	2	1	2	2	1	2	1	2				1	7						
Injury, Poisoning & certain other consequences of External Causes																					
T65	Mushroom Poisoning (Toxic effect of other unspecified substances)																				
V01G	Transport Accidents																				
W00G	Accidental Falls	1	7	29	213	148	329	216	354	169	258	151	209	121	774	481	201	168	286	223	
W50G	Other Bites and Sting (excludes dog bite)	1	11	14	171	163	235	191	192	148	144	137	141	145	549	596	143	153	175	183	
W54	Dog Bites																				
W65G	Accidental Drowning & Submersion																				
W85G	Exposure to Electric Current																				
X00G	Contact with Heat & Hot substances and exposure to Smoke, Fire & Flames																				
X20	Snake Bite																				

ICD10 CODE	Name of the Diseases	0-29 Days		1-11 Mts		1-4 Years		5-9 Years		10-14 Years		15-19 Years		20-24 Years		25-49 Years		50-59 Years		60+ Years	
		M	F	M	F	M	F	M	F	M	F	M	F	M	F	M	F	M	F	M	F
X21G	Contact with Venomous Animals and Plants (excludes snake bite)					2	1	1	1	1	1			1	1	8	5	3	3	2	2
X40G	Accidental Poisoning by and Exposure to Noxious substances			1		2	4	3	1	1	1	2	1	4	7	6	3	1	2	1	1
X60G	Intentional Self-harm by Poisoning						3					1	2	1	6	9	13	1		1	1
X71	Intentional Self-harm by Drowning & Submersion													1	2						
X90	Assault by Poisoning (includes homicidal poisoning)					1	2								2	3					
X92	Assault by Drowning and Submersion																				
XZZ ^G	Other Intentional Self-harm					1		1	3	4	3	11	6	27	70	31	20	3	11	2	2
Y96	Work Related Injuries			2	6	134	100	459	291	776	460	1098	490	1509	611	6136	2575	1329	734	1287	614
YYYY ^G	Others (injuries other than above & unknown cause of injury)			2	30	393	291	857	483	1105	526	1020	497	950	553	3399	2058	767	501	709	418
Other Conditions																					
YZZ ^G	Complications of Health Care	11	11	9	11	26	30	15	9	20	11	15	11	19	29	116	166	36	29	59	32
ZZZZ ^G	ANC, Immunization & Other Counselling	474	471	3214	3176	4267	4283	1341	1374	1131	1290	927	1355	1074	4186	6503	22891	1854	3008	2872	3185

Table 2.3: Inpatient cases in all hospitals-2022

ICD10 CODE	Name of the Diseases	0-29 Days		1-11 Months		1-4 Years		5-9 Years		10-14 Years		15-19 Years		20-24 Years		25-49 Years		50-59 Years		60+ Years	
		M	F	M	F	M	F	M	F	M	F	M	F	M	F	M	F	M	F	M	F
Infectious Diseases																					
A02 ^G	Diarrhoea	2	2	88	45	251	192	74	59	37	26	19	36	25	35	137	110	29	37	53	73
A03 ^G	Dysentery	1	1	2	4	15	13	7	2	4	4	6	4	8	9	16	23	10	4	9	8
A15 ^G	Tuberculosis ^B	1	1	3	1	1	1	1	1	3	6	26	37	42	54	127	105	25	13	62	43
A41 ^G	Other Sepsis (includes Septicaemia)	41	34	19	17	33	20	10	6	1	1	2	8	2	4	42	48	13	23	35	39
A50	Congenital Syphilis	2	2	1	1	1	1	1	1	1	1	1	1	1	1	1	1	1	1	1	1
A51 ^G	Genital Ulcer	1	1	1	1	1	1	1	1	1	1	1	1	1	1	1	1	1	1	1	1
A53 ^G	Syphilis	1	1	1	1	1	1	1	1	1	1	1	1	1	1	1	1	1	1	1	1
A54 ^G	Urethral/Vaginal Discharges	1	1	1	1	1	1	1	1	1	1	1	1	1	1	1	1	1	1	1	1
A63 ^G	Other Sexually Transmitted Disease (excludes HIV/AIDS)	1	1	1	1	1	1	1	1	1	1	1	1	1	1	1	1	1	1	1	1
A77 ^G	Rickettsial Disease ^B	1	1	2	2	11	13	3	7	4	6	6	4	8	5	47	46	11	15	21	18
Viral, Protozoal & Helminthic Diseases																					
B01	Chicken Pox	1	1	1	1	6	3	6	8	8	5	4	4	1	2	1	2	1	1	1	1
B15	Acute Hepatitis ^A	1	1	1	1	1	1	1	1	1	1	1	1	1	1	5	1	1	1	1	1
B16	Acute Hepatitis ^B	1	1	1	1	1	1	1	1	1	1	1	1	1	1	14	7	6	2	2	1
B17 ^G	Other Acute Hepatitis (includes Hepatitis C&E)	1	1	1	1	1	1	1	1	1	1	1	1	1	1	12	9	3	4	4	4
B50	Plasmodium Falciparum Malaria	1	1	1	1	1	1	1	1	1	1	1	1	1	1	2	2	1	1	1	1
B51	Plasmodium Vivax Malaria	1	1	1	1	1	1	1	1	1	1	1	1	1	1	1	1	1	1	1	1

ICD10 CODE	Name of the Diseases	0-29 Days		1-11 Months		1-4 Years		5-9 Years		10-14 Years		15-19 Years		20-24 Years		25-49 Years		50-59 Years		60+ Years	
		M	F	M	F	M	F	M	F	M	F	M	F	M	F	M	F	M	F	M	F
B53 ^G	Other Malaria			1	1	1	1	1	1				1							1	1
B55	Visceral Leishmaniasis (Kala-azar)																				
B65 ^G	Intestinal Worms							3	3	5	2	1	2	3		4	12	2	2	1	1
B86	Scabies			4	3	2	2	3	2	1	2	2	2			2	2				2
B95	Streptococcus GroupAB				1								1							3	
BZZ ^G	Other Infections (excludes ear, brain, STI)	2	4	36	32	114	93	39	39	27	21	19	20	31	24	167	150	52	46	69	65
Neoplasms																					
C15 ^G	Oesophagus Cancer															7	3	5	1	20	6
C16 ^G	Stomach/ Gastric Cancer											1				20	26	31	14	139	74
C18 ^G	Colon Cancer															23	11	12	5	21	18
C20	Rectal Cancer													1		11	6	14	14	21	8
C24 ^G	Hepato-Biliary Cancer																2		4	4	4
C25 ^G	Pancreatic Cancer															1				2	4
C50 ^G	Breast Cancer																22		15		21
C53 ^G	Cervical Cancer																65		24		21
CZZ ^G	Other Cancers			1	8	7	7	2	3	4	5	9		3	4	58	68	33	43	181	120
Diseases of the Blood & Blood-forming Organs																					
D00 ^G	Neoplasm (benign + CIS)					2	2	1		2	4	7	5	3	6	16	92	4	32	13	24
D50 ^G	Nutritional Anaemia	1		6	5	19	7	3	8	9	16	12	27	4	21	37	75	17	32	37	50
D55 ^G	Blood & Immune Disorders			11	6	13	8	9	9	9	11	11	15	2	11	27	63	14	21	32	21

ICD10 CODE	Name of the Diseases	0-29 Days		1-11 Months		1-4 Years		5-9 Years		10-14 Years		15-19 Years		20-24 Years		25-49 Years		50-59 Years		60+ Years	
		M	F	M	F	M	F	M	F	M	F	M	F	M	F	M	F	M	F	M	F
Endocrine, Nutritional & Metabolic Diseases																					
E10 ^g	Diabetes ^b					1				2	1	4	2	3	4	143	198	229	190	306	297
E40 ^g	Malnutrition (excludes child clinic attendance)		3	5	9	3	4	1	4	2			2			1	1	1	1	7	1
EZ2 ^g	Other Nutritional & Metabolic Disorders ^b	7	5	33	39	18	19	2	6	1	2	6	6	3	4	46	81	26	25	36	35
Mental & Behavioural Disorders																					
F03 ^g	Dementia															2	1	1		4	3
F10	Mental and Behavioral Disorders due to Alcohol							1	1	2	2	4		20	16	545	178	84	47	34	24
F19	Mental and Behavioral Disorders due to Multiple Drug use & other use of Psychoactive substances									1	4	22	7	43	7	81	10	5	1	2	4
F20 ^g	Psychosis								3	1		4	5	12	5	38	35	6	1	3	5
F31 ^g	Depression									1	8	15	28	25	25	35	96	12	17	9	13
F40 ^g	Anxiety									2	5	8	10	35	11	26	52	8	12	7	8
FZZ ^g	Other Mental Disorders		1	1	3	1	1	2	1	2	4	12	11	32	19	20	64	70	5	13	10
Diseases of the Nervous System																					
G00 ^g	Meningitis/Encephalitis	1	2	9	7	7	6	3	3	2	1	5	6	4	2	21	17	1	6	9	22
G40 ^g	Epilepsy ^b	1		7	11	16	18	14	11	13	12	16	16	14	10	78	48	25	16	14	12
GZZ ^g	Other Nervous Disorders (includes Peripheral disorders)	3	4	18	9	38	29	27	18	19	22	39	54	44	51	278	249	52	72	94	89

ICD10 CODE	Name of the Diseases	0-29 Days		1-11 Months		1-4 Years		5-9 Years		10-14 Years		15-19 Years		20-24 Years		25-49 Years		50-59 Years		60+ Years	
		M	F	M	F	M	F	M	F	M	F	M	F	M	F	M	F	M	F	M	F
Diseases of the Eye & Ear																					
H10	Conjunctivitis	1		2		1		2	2	4	5	2	2	6	3	13	3	1	1	2	3
H25 ^G	CataractB					2		3	4	2	3	2	3	6	4	21	7	16	13	107	110
H52 ^G	Disorders of Refraction & Accommodation (Refractive Error in the Eye)		1							2	4	4	4	10	7	18	10	6	8	6	6
H2Z ^G	Other Eye Disorders	1		4	2	28	13	26	18	15	20	24	24	39	28	122	108	35	40	70	69
H65 ^G	Otitis Media	1		4	3	5	7	8	10	9	8	13	13	11	10	22	27	10	6	3	7
H90 ^G	Other Ear Disorders			5	2	24	13	16	25	19	14	14	17	18	12	55	41	13	11	10	20
Diseases of the Circulatory System																					
I00 ^G	Rheumatic Heart Disease ^b					2	1	3	2	1	2	4	5	2	3	17	19	12	13	11	15
I10 ^G	Hypertension							1		1	1	6	4	9	16	354	382	286	241	573	578
I20 ^G	Ischaemic Heart Diseases ^b									2						30	9	16	13	63	60
I60 ^G	Cerebro-vascular Diseases ^b			1		1	4			1	1	2	1	1	4	58	47	43	32	182	122
I88 ^G	Bubo															2	3	2	1	6	2
IZZ ^G	Other Circulatory Diseases	3		15	10	24	10	7	13	11	7	22	17	17	21	171	194	72	110	324	354
Diseases of the Respiratory System																					
J00	Common Cold	12	7	232	228	537	473	318	263	132	139	149	237	231	184	390	499	94	70	97	116
J02 ^G	Acute Pharyngitis/Tonsillitis			26	16	93	71	103	110	56	62	49	46	41	73	135	207	35	26	27	29
J12 ^G	Pneumonia	12	6	149	119	318	249	88	74	21	30	15	10	16	16	94	88	40	61	189	220
I45	Asthma			3	5	23	11	28	15	16	12	2	2	2	6	31	92	25	53	115	166
IZZ ^G	Other Respiratory & Nose Diseases	22	17	214	160	359	267	152	100	54	58	66	68	100	95	368	371	134	143	663	753

ICD10 CODE	Name of the Diseases	0-29 Days		1-11 Months		1-4 Years		5-9 Years		10-14 Years		15-19 Years		20-24 Years		25-49 Years		50-59 Years		60+ Years	
		M	F	M	F	M	F	M	F	M	F	M	F	M	F	M	F	M	F	M	F
Diseases of the Digestive System																					
K00 ^G	Diseases of Teeth & Gums			3	2	27	30	76	80	39	39	44	31	51	65	124	162	43	42	50	59
K02	Dental Caries					19	29	43	49	17	28	20	25	23	49	55	71	23	17	14	17
K20 ^G	Peptic Ulcer Syndrome			7	3	35	18	24	19	25	36	56	78	107	120	327	356	89	84	145	150
K35	Acute Appendicitis ^B			1	2	5	5	30	19	52	29	45	43	25	52	224	193	42	26	26	25
K70	Alcoholic Liver Disease													10	10	380	248	152	109	128	106
K80 ^G	Gall Bladder Diseases ^B	3	3			1	1		3	2	2	4	8	17	26	153	452	69	116	108	183
KZZ ^G	Other Diseases of the Digestive System	34	38	84	81	284	245	181	136	113	116	137	139	150	184	796	694	221	199	412	302
Diseases of the Skin & Subcutaneous Tissue																					
L00 ^G	Skin Infections	2	3	38	25	88	68	60	71	85	62	72	61	54	52	208	150	56	38	91	41
LZZ ^G	Other Disorders of Skin and Subcutaneous Tissue	2	4	24	17	75	69	74	40	73	44	65	68	69	53	297	259	92	83	167	103
Diseases of the Musculo-skeletal System & Congenital Deformities																					
M00 ^G	Arthritis & Arthrosis			3		11		10	6	13	14	13	15	21	17	118	76	43	30	66	50
MZZ ^G	Other Musculo-Skeletal Disorders	1		11	1	29	25	79	40	84	50	92	85	141	106	614	539	157	116	208	184
Diseases of the Genito-Urinary System																					
N30	Cystitis ^B			4	3	2	6	3	8	2	3	6	10	3	8	22	78	18	14	16	24
N61 ^G	Infections of the Breast (includes Puerperium)												1		12		38		4		
N62 ^G	Other diseases of the Breast												5	1	14	3	54	2	3		4
N70 ^G	Pelvic Inflammatory Disease ^B								2		9		71		70		102		75		

ICD10 CODE	Name of the Diseases	0-29 Days		1-11 Months		1-4 Years		5-9 Years		10-14 Years		15-19 Years		20-24 Years		25-49 Years		50-59 Years		60+ Years	
		M	F	M	F	M	F	M	F	M	F	M	F	M	F	M	F	M	F	M	F
N91 ⁶	Menstrual Disturbances												5	17		119			23		4
NZZ ⁶	Other Kidney, UT/Genital Disorders	5	3	12	28	65	54	93	37	59	47	51	96	178	525	1217	180	265	378	333	
Pregnancy, Childbirth & the Puerperium																					
O00 ⁶	Abortions												24	110		609					
O13 ⁶	Pregnancy Induced Hypertension											2	35		270						
O20 ⁶	Ante-Partum Haemorrhage & Placenta Previa											3	45		192						
O32	Malpresentation											1	13		95						
O63	Prolonged Labour											4	51		134						
O64 ⁶	Obstructed Labour											3	14		39						
O72	Post-Partum Haemorrhage											1	18		65						
O73	Retained Placenta											1	9		46						
O85 ⁶	Puerperal Sepsis											2	13		53						
OZZ ⁶	Other Complications of Pregnancy											5	194		4856						
Certain Conditions Originating in the Perinatal Period																					
P05	Low Birth Weight	169	148																		
P95	Foetal Death & Stillbirth	7	9																		
P96	Neonatal Death	26	16																		
PZZ ⁶	Conditions Originating in the Perinatal period	1376	1270																		

ICD10 CODE	Name of the Diseases	0-29 Days		1-11 Months		1-4 Years		5-9 Years		10-14 Years		15-19 Years		20-24 Years		25-49 Years		50-59 Years		60+ Years		
		M	F	M	F	M	F	M	F	M	F	M	F	M	F	M	F	M	F	M	F	
Congenital Malformations, Deformations & Chromosomal Abnormalities																						
Q36 ^G	Oro-facial Clefts	1		6	5																	
Q45 ^G	Gastrointestinal Tract defects	1			3	1																
Q66 ^G	Talipes Equinovarus																					
Q79 ^G	Omphalocele																					
QZZ ^G	Other Malformations	19	22	29	24	77	45	19	25	9	8	3	3	4	3	10	28		2	6	2	
Injury, Poisoning & certain other consequences of External Causes																						
T65	Mushroom Poisoning (Toxic effect of other unspecified substances)							1	3	1		6		3	1	8	10			5	1	2
V01G	Transport Accidents			4		13	12	19	20	15	13	26	15	67	33	294	118	53	29	27	12	
W00G	Accidental Falls	1		9	10	81	48	89	41	75	20	47	26	76	26	243	153	62	41	143	128	
W50G	Other Bites and Sting (excludes dog bite)			1		6	5	16	12	20	5	5	9	11	13	51	38	22	18	19	18	
W54	Dog Bites					25	19	82	62	46	32	20	33	39	58	179	85	34	22	31	13	
W65G	Accidental Drowning & Submersion						1					1		1	1	3			1		1	
W85G	Exposure to Electric Current							1		4		1		1		7						
X00G	Contact with Heat & Hot substances and exposure to Smoke, Fire & Flames			7	6	22	17	12	4	8	2	3	8	8	12	35	24	7	10	8	1	
X20	Snake Bite			1		1		1		1	3	6	3	11	3	37	17	15	5	7	5	
X21G	Contact with Venomous Animals and Plants (excludes snake bite)												2			3	1			1	1	

ICD10 CODE	Name of the Diseases	0-29 Days		1-11 Months		1-4 Years		5-9 Years		10-14 Years		15-19 Years		20-24 Years		25-49 Years		50-59 Years		60+ Years		
		M	F	M	F	M	F	M	F	M	F	M	F	M	F	M	F	M	F	M	F	
X40G	Accidental Poisoning by and Exposure to Noxious substances			2	1	6	5	1	4	2		1	1	2	4	8	5	1			1	
X60G	Intentional Self-harm by Poisoning											2	3	6	6	5	5	2			1	
X71	Intentional Self-harm by Drowning & Submersion										1				1							
X90	Assault by Poisoning (includes homicidal poisoning)																1					
X92	Assault by Drowning and Submersion											1			1							
XZZ ^G	Other Intentional Self-harm							1		1	1	3	2	4	4	8	3				3	
Y96	Work Related Injuries	1		3	1	11	3	23	15	36	5	61	35	129	61	561	156	106	25	85	40	
YYY ^G	Others (injuries other than above & unknown cause of injury)	1		6	4	69	49	131	70	124	52	138	73	226	107	893	371	135	102	160	95	
Other Conditions																						
YYZ ^G	Complications of Health Care	2	4	2	1	3	6	5	3	1	3	4	2	3	4	20	25	10	4	9	5	
ZZZ ^G	ANC, Immunization & Other Counselling	90	91	4	5	4	2	1	1	2	1	3	12	6	95	29	470	2	4	5	3	

Table 2.4: Morbidity cases seen by Primary health care-2022

ICD10 CODE	Name of the Diseases	0-29 Days		1-11 Months		1-4 Years		5-9 Years		10-14 Years		15-19 Years		20-24 Years		25-49 Years		50-59 Years		60+ Years	
		M	F	M	F	M	F	M	F	M	F	M	F	M	F	M	F	M	F	M	F
Infectious Diseases																					
A02 ^G	Diarrhoea	6	3	248	257	1055	921	813	656	747	579	488	345	293	238	1174	1367	348	388	716	748
A03 ^G	Dysentery			21	15	51	37	33	21	32	18	44	31	45	40	145	173	62	57	82	82
A15 ^G	Tuberculosis ^B															1	1			1	
A41 ^G	Other Sepsis (includes Septicaemia)																				1
A50	Congenital Syphilis																				
A51 ^G	Genital Ulcer								1			1	1	1		7	11	7	1	4	1
A53 ^G	Syphilis											2	2		1	12	25	13	7	9	7
A54 ^G	Urethral/Vaginal Discharges							1		1		2	5	18	26	96	263	9	21	11	11
A63 ^G	Other Sexually Transmitted Disease (excludes HIV/AIDS)											2	2	5	4	37	50	8	10	9	5
A77 ^G	Rickettsial Disease ^B										1					2	3		5		1
Viral, Protozoal & Helminthic Diseases																					
B01	Chicken Pox			3	4	32	40	129	137	126	125	44	56	25	6	11	21		2	1	
B15	Acute Hepatitis ^A																				
B16	Acute Hepatitis ^B																		1	1	
B17 ^G	Other Acute Hepatitis (includes Hepatitis C&E)																				
B50	Plasmodium Falciparum Malaria																			1	1
B51	Plasmodium Vivax Malaria																				

ICD10 CODE	Name of the Diseases	0-29 Days		1-11 Months		1-4 Years		5-9 Years		10-14 Years		15-19 Years		20-24 Years		25-49 Years		50-59 Years		60+ Years	
		M	F	M	F	M	F	M	F	M	F	M	F	M	F	M	F	M	F	M	F
B53 ^G	Other Malaria																				
B55	Visceral Leishmaniasis (Kala-azar)																				
B65 ^G	Intestinal Worms			35	42	63	255	247	481	272	137	294	137	294	137	294	137	294	137	294	137
B86	Scabies	5	10	68	63	255	247	481	272	137	294	137	294	137	294	137	294	137	294	137	294
B95	Streptococcus Group ^{AB}						3														
BZZ ^G	Other Infections (excludes ear, brain, STI)	2	5	122	122	394	275	268	204	163	110	75	87	454	567	105	155	187	200		
Neoplasms																					
C15 ^G	Oesophagus Cancer																				1
C16 ^G	Stomach/ Gastric Cancer													1							
C18 ^G	Colon Cancer																				
C20	Rectal Cancer																				
C24 ^G	Hepato-Biliary Cancer																				
C25 ^G	Pancreatic Cancer																				
C50 ^G	Breast Cancer																				
C53 ^G	Cervical Cancer																				
CZZ ^G	Other Cancers			1			1	1		1			3	2	4	5	1	1	5		
Diseases of the Blood & Blood-forming Organs																					
D00 ^G	Neoplasm (benign + CIS)						2	1	3	10						1	2	1	2	1	
D50 ^G	Nutritional Anaemia		1	12	13	35	43	37	87	87	115	59	278	965	108	269	200	322			
D55 ^G	Blood & Immune Disorders			5	4	5	4	8	9	15	3	9	52	117	14	23	30	58			
Endocrine, Nutritional & Metabolic Diseases																					
E10 ^G	Diabetes ^B											1	27	16	12	9	17	22			

ICD10 CODE	Name of the Diseases	0-29 Days		1-11 Months		1-4 Years		5-9 Years		10-14 Years		15-19 Years		20-24 Years		25-49 Years		50-59 Years		60+ Years	
		M	F	M	F	M	F	M	F	M	F	M	F	M	F	M	F	M	F	M	F
E40 ^g	Malnutrition (excludes child clinic attendance)		1	1	5	4	1	3	2	2	2	3	3	1	5	6	3	1	3	1	5
EZZ ^g	Other Nutritional & Metabolic Disorders ^s		6	14	30	50	36	79	85	176	84	61	27	153	308	61	99	100	147		
Mental & Behavioural Disorders																					
F03 ^g	Dementia													1	2						
F10	Mental and Behavioral Disorders due to Alcohol											1	2	3	2	32	9	9	6	1	
F19	Mental and Behavioral Disorders due to Multiple Drug use & other use of Psychoactive substances													1	2						
F20 ^g	Psychosis															1	1	1	1		
F31 ^g	Depression									3	2	2	1	1	5	16	1	7	1	1	
F40 ^g	Anxiety								2	4	1	2	23	10	50	27	11	5	2	6	
FZZ ^g	Other Mental Disorders						3	1	5	9	6	3	9	34	70	13	14	13	13		
Diseases of the Nervous System																					
G00 ^g	Meningitis/Encephalitis							1							1	14		1	1	1	
G40 ^g	Epilepsy ^b		2				2	3				2			5	11	3	5	2	1	
GZZ ^g	Other Nervous Disorders (includes Peripheral disorders)	6	5	75	99	335	372	870	985	1193	1304	874	1172	731	1414	6155	13576	2065	3073	2987	3777
Diseases of the Eye & Ear																					
H10	Conjunctivitis	5	2	39	42	102	125	140	136	188	163	142	132	121	133	513	768	245	389	494	640
H25 ^g	Cataract ^b			1		2	2	1	1	2	2	1	1	5	1	7	20	5	6	8	6

ICD10 CODE	Name of the Diseases	0-29 Days		1-11 Months		1-4 Years		5-9 Years		10-14 Years		15-19 Years		20-24 Years		25-49 Years		50-59 Years		60+ Years	
		M	F	M	F	M	F	M	F	M	F	M	F	M	F	M	F	M	F	M	F
H52 ^G	Disorders of Refraction & Accommodation (Refractive Error in the Eye)					2	2			1	3	3	1	4	1	19	17	8	8	8	20
H22 ^G	Other Eye Disorders	7	3	78	56	253	245	374	357	552	666	501	565	431	411	2345	3748	1074	1582	2305	2976
H65 ^G	Otitis Media			33	44	134	144	251	221	268	251	174	157	95	89	349	396	104	100	97	105
H90 ^G	Other Ear Disorders	1		24	19	125	113	215	237	257	297	171	165	108	111	349	446	99	126	155	170
Diseases of the Circulatory System																					
I00 ^G	Rheumatic Heart Disease ^b			3	3	12	4	9	3	7	2		1	2	2	14	11	3	6	10	9
I10 ^G	Hypertension							1			1	4	10	10	23	508	767	300	352	493	567
I20 ^G	Ischaemic Heart Diseases ^b															2	10	3	3	13	3
I60 ^G	Cerebro-vascular Diseases ^b					1										2					1
I88 ^G	Bubo																				
IZZ ^G	Other Circulatory Diseases			5	8	21	14	26	32	22	48	38	34	45	60	405	657	84	121	129	151
Diseases of the Respiratory System																					
J00	Common Cold	13	42	1670	1662	5606	5595	6073	6940	4866	4969	3248	2721	2304	2607	11925	16431	3392	3606	4656	4952
J02 ^G	Acute Pharyngitis/Tonsillitis		5	62	60	502	507	1113	1201	1059	1230	825	776	460	652	2540	4041	597	680	670	609
J12 ^G	Pneumonia	1	1	157	152	343	280	59	43	14	12	5	7	7	7	33	22	10	13	22	22
J45	Asthma	2		1	1	7	1	2			2		2	2	1	8	19	9	16	20	21
JZZ ^G	Other Respiratory & Nose Diseases	12	9	435	500	1428	1465	1636	1855	1571	1558	1114	1039	775	953	3566	6053	1083	1360	1751	1903
Diseases of the Digestive System																					
K00 ^G	Diseases of Teeth & Gums			4	4	105	111	392	365	268	332	253	290	211	260	806	1017	293	364	424	353
K02	Dental Caries					108	133	395	411	302	349	261	365	188	271	878	1274	313	386	445	431

ICD10 CODE	Name of the Diseases	0-29 Days		1-11 Months		1-4 Years		5-9 Years		10-14 Years		15-19 Years		20-24 Years		25-49 Years		50-59 Years		60+ Years	
		M	F	M	F	M	F	M	F	M	F	M	F	M	F	M	F	M	F	M	F
K20 ⁶	Peptic Ulcer Syndrome			19	25	136	171	240	370	404	475	424	513	2587	3408	882	1098				
K35	Acute Appendicitis ^b		1	1	1	2	1	4	6	1	4	1	4	17	43	5	10				
K70	Alcoholic Liver Disease								2		1		5	36	17	12	4				
K80 ^c	Gall Bladder Diseases ^b			1		4	3	1		1	2	1	1	6	8	2	4				
KZZ ⁶	Other Diseases of the Digestive System	7		172	208	1209	1094	1980	2283	1650	1740	983	1253	5172	7477	1748	2094				
Diseases of the Skin & Subcutaneous Tissue																					
L00 ⁶	Skin Infections	8	12	233	269	1206	1150	1963	1726	2117	1935	1307	1074	689	624	3104	3418	809	838	1059	839
LZZ ⁶	Other Disorders of Skin and Subcutaneous Tissue	17	16	365	419	1435	1463	1909	1947	2143	2275	1553	1559	964	1056	5088	7209	1435	1741	2246	2169
Diseases of the Musculo-skeletal System & Congenital Deformities																					
M00 ⁶	Arthritis & Arthrosis					2	11	20	35	49	53	45	591	670	303	330	511				
MZZ ⁶	Other Musculo-Skeletal Disorders	1	1	16	11	71	90	224	224	537	512	722	600	762	6772	2316	2671	3731	3722		
Diseases of the Genito-Urinary System																					
N30	Cystitis ^b			1	1	2	1	1	5			9	11	26	2	9	6				
N61 ⁶	Infections of the Breast (includes Puerperium)						2				2		8	44		2					
N62 ⁶	Other diseases of the Breast						1	3	8		24	1	61	6	267	1	18				
N70 ⁶	Pelvic Inflammatory Disease ^b										7		5	42		4					
N91 ⁶	Menstrual Disturbances							2	58		127	120	550	47							

ICD10 CODE	Name of the Diseases	0-29 Days		1-11 Months		1-4 Years		5-9 Years		10-14 Years		15-19 Years		20-24 Years		25-49 Years		50-59 Years		60+ Years	
		M	F	M	F	M	F	M	F	M	F	M	F	M	F	M	F	M	F	M	F
NZZ ⁶	Other Kidney, UT/Gential Disorders	1		8	3	82	88	122	139	103	200	106	319	122	550	869	4435	4756	754	503	695
Pregnancy, Childbirth & the Puerperium																					
O00 ⁶	Abortions											1	1	1	1			28			
O13 ⁶	Pregnancy Induced Hypertension																	2			
O20 ⁶	Ante-Partum Haemorrhage & Placenta Previa														1						
O32	Malpresentation											1						2			
O63	Prolonged Labour																	3			
O64 ⁶	Obstructed Labour																				
O72	Post-Partum Haemorrhage														1				1		
O73	Retained Placenta											1						2			
O85 ⁶	Puerperal Sepsis																				
OZZ ⁶	Other Complications of Pregnancy											4			22			90			
Certain Conditions Originating in the Perinatal Period																					
P05	Low Birth Weight		1																		
P95	Foetal Death & Stillbirth																				
P96	Neonatal Death		1																		
PZZ ⁶	Conditions Originating in the Perinatal period		2		3																
Congenital Malformations, Deformations & Chromosomal Abnormalities																					
Q36 ⁶	Oro-facial Clefts																				

ICD10 CODE	Name of the Diseases	0-29 Days		1-11 Months		1-4 Years		5-9 Years		10-14 Years		15-19 Years		20-24 Years		25-49 Years		50-59 Years		60+ Years	
		M	F	M	F	M	F	M	F	M	F	M	F	M	F	M	F	M	F	M	F
Q45 ^g	Gastrointestinal Tract defects																				
Q66 ^g	Talipes Equinovarus																				
Q79 ^g	Omphalocele		1																		
QZZ ^s	Other Malformations		1	1	1								1	2							
Injury, Poisoning & certain other consequences of External Causes																					
T65	Mushroom Poisoning (Toxic effect of other unspecified substances)					3	2	4	1	2	1	1	1	3	3	4	10	5	3	2	
V01G	Transport Accidents			1	6	8	8	8	8	11	5	12	8	39	10	157	54	26	14	10	7
W00G	Accidental Falls		2	8	74	49	151	115	172	70	102	56	39	30	267	170	80	72	138	102	
W50G	Other Bites and Sting (excludes dog bite)		3	6	106	104	157	130	131	101	86	86	83	80	352	396	96	101	139	145	
W54	Dog Bites		1	3	85	83	287	196	165	124	111	79	109	89	478	341	155	106	182	133	
W65G	Accidental Drowning & Submersion					2	3	5	4	4	6	1	1	1	7	8	5	3	2	1	
W85G	Exposure to Electric Current					1	3	1	5	1	2	1	2	4	3	2	1				
X00G	Contact with Heat & Hot substances and exposure to Smoke, Fire &Flames		17	7	93	68	46	49	54	45	35	36	37	45	131	150	25	29	30	34	
X20	Snake Bite			1	1	1	1	1			3	3	1	1	20	7	3	6	2		
X21G	Contact with Venomous Animals and Plants (excludes snake bite)					1	1	1	1	1				2	4	5			3	1	

ICD10 CODE	Name of the Diseases	0-29 Days		1-11 Months		1-4 Years		5-9 Years		10-14 Years		15-19 Years		20-24 Years		25-49 Years		50-59 Years		60+ Years	
		M	F	M	F	M	F	M	F	M	F	M	F	M	F	M	F	M	F	M	F
X40G	Accidental Poisoning by and Exposure to Noxious substances			1		1	2	2	1							3	2				1
X60G	Intentional Self-harm by Poisoning					2						1				2	3				
X71	Intentional Self-harm by Drowning & Submersion																				
X90	Assault by Poisoning (includes homicidal poisoning)					1	2										3				
X92	Assault by Drowning and Submersion																				
XZZ ^g	Other Intentional Self-harm					1		1	2	4	1	5	1	6	2	21	15	6	1	5	1
Y96	Work Related Injuries		2			71	48	320	180	526	271	657	234	790	325	3657	1618	840	454	878	416
YYY ^g	Others (injuries other than above & unknown cause of injury)		18	20		254	175	582	305	735	334	475	233	338	202	1697	1027	415	268	455	285
Other Conditions																					
YYZ ^g	Complications of Health Care		1		3	2	14	7	12	8	9	4	11	13	68	85	15	6	27	9	
ZZZ ^g	ANC, Immunization & Other Counselling	244	247	1911	1940	2831	2868	1152	1205	916	1100	814	1072	821	2615	5360	15222	1611	2507	2734	2951

Table 2.5: Total case load in each hospital, 2022

Dzongkhag	Hospitals	Type		Total
		New	Old	
Bumthang	Bumthang Hospital	31206	499	31705
Chhukha	Khatikha Hospital	1798	1762	3560
	Chhukha Hospital	5454	6553	12007
	Tsimalakha Hospital	5777	6336	12113
	Gedu Hospital	16459		16459
	Phuentshogling Hospital	65394		65394
Dagana	Dagana Hospital	8432	1111	9543
	Dagapela Hospital	9856	9266	19122
	Lhamoizingkha Hospital	15682	4456	20138
Gasa	Gasa Hospital	2313	958	3271
Haa	Haa Hospital	7504	11936	19440
Lhuentse	Lhuentse Hospital	2026	8182	10208
Monggar	Monggar ERR Hospital	5133	43897	49030
	Gyalpoizhing Hospital	7583	3889	11472
Paro	Paro Hospital	77304	35886	113190
Pemagatshel	Nganglam Hospital	3138	13223	16361
	Pemagatshel Hospital	7815	5415	13230
Punakha	Punakha Hospital	10382	37771	48153
Samdrup Jongkhar	Jomotsangkha Hospital	2637	5526	8163
	Gomdar Hospital	3946	363	4309
	Samdrupchhoeling Hospital	6524	14586	21110
	Samdrup Jongkhar Hospital	7485	10085	17570
	Dewathang RBA Hospital	9317	7114	16431
Samtse	Gomtu Hospital	1729	4854	6583
	Dorokha Hospital	5533	4422	9955
	Sibsoo Hospital	13531	9844	23375
	Samtse Hospital	24130	32134	56264

Dzongkhag	Hospitals	Type		Total
		New	Old	
Sarpang	Chhuzaggang Hospital	7468	4513	11981
	Sarpang Hospital	8445	19006	27451
	Gelegphu CRR Hospital	28898	81878	110776
Thimphu	Dechhencholing Hospital	9476	19451	28927
	Gidakom Hospital	19310	7635	26945
	JDWNR Hospital	27230		27230
	Lungtenphu RBA Hospital	67205	64335	131540
Trashhi Yangtse	Yangtse Hospital	2124	363	2487
	Khamdang Hospital	10052	2337	12389
Trashigang	Tsangpo Hospital	967	3501	4468
	Khaling Hospital	1508	4777	6285
	Riserboo Hospital	2248	1114	3362
	Bartsham Hospital	4496	6403	10899
	Rangoong Hospital	8324	3332	11656
	Trashigang Hospital	10914	17708	28622
	Kanglung Hospital	15006	12576	27582
Trongsa	Dangdung Hospital	8247	2394	10641
	Trongsa Hospital	12678	5653	18331
Tsirang	Tsirang Toed Hospital	6748	4750	11498
	Damphu Hospital	23376	12971	36347
Wangdue	Wangdue RBA Hospital	5113	2076	7189
	Wangdue Hospital	6139	26513	32652
	Esa Hospital	10759	4168	14927
Zhemgang	Yebilaptsa Hospital	2509	3554	6063
	Buli Hospital	4031	2063	6094
	Panbang Hospital	4363	4295	8658
	Zhemgang Hospital	4917	2056	6973

Table 2.6: Case load by Primary Health Care, 2022

Dzongkhag	Health Facilities	Type		Total
		New	Old	
Bumthang	Chhoekhor TB4:E183	2577	988	3565
	Chhumig PHC	6774	2764	9538
	Dhur PHC	573	211	784
	Tang PHC	3562	1223	4785
	Ura PHC	4083	1475	5558
Chhukha	Arikha PHC	4324	1175	5499
	Baikunza Sub-Post	277	177	454
	Bongo PHC	1503	1291	2794
	Chapchha PHC	2376	863	3239
	Chimuna Sub-Post	710	110	820
	Chong Geykha PHC	2663	1752	4415
	Darla PHC	3144	2449	5593
	Doongna PHC	8715	1147	9862
	Getana PHC	2748	295	3043
	Jigmechu PHC	0		0
	Kamji PHC	1010	133	1143
	Lingden PHC	0		0
	Loggchina PHC	2764	1657	4421
	Metakha PHC	1168	428	1596
	Rangaytung PHC	1998	510	2508
	Renchentse PHC	1965	936	2901
	Sinchula PHC	1279	671	1950
Tashigatshel RBP MI Room	1885	137	2022	
Dagana	Akchochen PHC	3140	1657	4797
	Drukjeygang PHC	5960	3634	9594
	Jurugang PHC	894	238	1132
	Khagochen PHC	1870	1810	3680

Dzongkhag	Health Facilities	Type		Total
		New	Old	
Dagana	Lagyab PHC	1410	1024	2434
	Nyimtola PHC	1844	2231	4075
	Tsangkha PHC	2076	2270	4346
Gasa	Damji PHC	2694	729	3423
	Laya PHC	1380	791	2171
	Lunana PHC	1546	411	1957
Haa	Bebji Sub-Post	1642	606	2248
	Dorithasa PHC	324	331	655
	Ngetshena PHC	896	187	1083
	Sangbay Dungkhag Sub-Post	1362	257	1619
	Sangbay PHC	1202	808	2010
	Yangthang PHC	898	1009	1907
Lhuentse	Autsho PHC	2919	2407	5326
	Dangling PHC	754	475	1229
	Dungkar PHC	1774	562	2336
	Ganglakhema PHC	622	220	842
	Gortshom PHC	1477	527	2004
	Khoma PHC	4059	560	4619
	Ladrong PHC	1348	172	1520
	Minjey PHC	2650	445	3095
	Ney PHC	1405	451	1856
	Patpachhu PHC	1483	864	2347
	Tagmachhu PHC	2869	2262	5131
	Thimyul PHC	1160	650	1810
	Tsaenkhar PHC	2011	1239	3250
	Zangkhar PHC	962	432	1394

Dzongkhag	Health Facilities	Type		Total
		New	Old	
Monggar	Baanjar PHC	546	449	995
	Balam PHC	3429	1412	4841
	Boompazor PHC	2077	1390	3467
	Chagsakhar PHC	2764	1545	4309
	Chhaling PHC	3332	1430	4762
	Daagsa PHC	1127	528	1655
	Dramedtse PHC	5651	926	6577
	Ganglaping PHC	568	410	978
	Jurmed PHC	2075	565	2640
	Kengkhar PHC	2299	703	3002
	Lingmethang PHC	9251	4668	13919
	Muhoong Sub-Post	399	183	582
	Nagor PHC	1402	903	2305
	Narang PHC	1491	1352	2843
	Ngatshang PHC	1787	614	2401
	Pangthang Sub-Post	1004	498	1502
	Resa Sub-Post	211	285	496
	Senggor PHC	361	102	463
	Serzhong PHC	2134	1662	3796
	Silambi Sub-Post	1266	444	1710
	Tagkhambi Sub-Post	134	194	328
	Thangrong PHC	3334	1400	4734
	Tongla Sub-Post	1147	141	1288
	Tsakaling PHC	2667	1559	4226
Tsamang PHC	1089	717	1806	
Yadi PHC	2314	1511	3825	
Yangbari PHC	1732	1025	2757	

Dzongkhag	Health Facilities	Type		Total
		New	Old	
Paro	Bueltikha PHC	5966	1825	7791
	Dawakha PHC	3384	1580	4964
	Drugyal PHC	7927	8575	16502
	Gunitsawa Sub-Post	219	127	346
	Pangbisa Sub-Post	3654	318	3972
Pemagatshel	Borangma Sub-Post	449	261	710
	Chhimoong PHC	665	198	863
	Chhoekhorling PHC	730	1440	2170
	Chongshing Sub-Post	185	380	565
	Dechhenling PHC	3061	1784	4845
	Dungmaed PHC	696	577	1273
	Gonpa Singma PHC	2201	745	2946
	Khangma Sub-Post	591	719	1310
	Mikuri Sub-Post	1220	72	1292
	Nanong PHC	3727	2168	5895
	Naskhar Sub-Post	262	206	468
	Norboogang PHC	2433	1056	3489
	Pretengma PHC	1665	775	2440
	Shali Sub-Post	1104	558	1662
	Thongsa Sub-Post	298	320	618
	Thrumchung PHC	284	193	477
	Tshatshi PHC	2768	1185	3953
Yurung PHC	4712	1692	6404	
Punakha	Goenshari PHC	446	250	696
	Kabisa PHC	3929	3183	7112
	Lobesa Sub-Post	1950	1502	3452
	Nobugang PHC	3257	190	3447

Dzongkhag	Health Facilities	Type		Total
		New	Old	
Punakha	Samadingkha PHC	5588	2353	7941
	Shengana PHC	2269	1245	3514
	Thinleygang PHC	3587	1304	4891
	Tshochasa PHC	1136	1054	2190
Samdrup Jongkhar	Lauri PHC	1766	324	2090
	Maenjiwoong PHC	1479	379	1858
	Martshala PHC	3830	1089	4919
	Orong PHC	3879	1269	5148
	Pemathang PHC	3392	2681	6073
	Samrang Sub-Post	251	75	326
	Sarjoong Sub-Post	871	148	1019
	Wangphoog PHC	2429	1268	3697
	Wooling Sub-Post	1998	721	2719
	Zangthi PHC	1130	389	1519
Samtse	Bara PHC	4192	2800	6992
	Chengmari PHC	8062	2917	10979
	Doongtoed PHC	2753	1781	4534
	Duenchukha PHC	2377	1370	3747
	Ganthog PHC	3045	457	3502
	Gawaling Sub-Post	684	439	1123
	Ghishingma Sub-Post	0		0
	Panbari PHC	8560	2476	11036
	Pemaling PHC	1507	1656	3163
	Phendegang Sub-Post	0		0
	Sangngag Chhoeling PHC	3875	556	4431
	Sengteng PHC	3659	1470	5129
Tading Sub-Post	340	57	397	

Dzongkhag	Health Facilities	Type		Total
		New	Old	
Samtse	Tendruk PHC	12927	3570	16497
	Ugyentse PHC	3394	1343	4737
	Yoeseltse PHC	4525	2404	6929
Sarpang	Chokhorling PHC	7952	6248	14200
	Gakidling PHC	1227	1054	2281
	Jangchubling PHC	5951	3329	9280
	Jigme Chhoeling PHC	4349	2971	7320
	Jigmedling PHC	7133	2149	9282
	Lhayul PHC	2146	1483	3629
	Maenchhulam PHC	828	375	1203
	Norbuling PHC	6512	3491	10003
	Phibsoo Sub-Post	167	35	202
	Seng Gey PHC	1760	977	2737
	Taraythang PHC	861	929	1790
	Umling PHC	4276	3578	7854
	Thimphu	Barshong PHC	1020	95
Chamgang PHC		2665	1528	4193
Chamgang RBP PHC		5557	3208	8765
Changjiji THC		3648	4155	7803
CHD JDWNRH		1402	435	1837
Genyenkha PHC		3365	1539	4904
Hejo THC		9649	8196	17845
Hongtsho PHC		2970	2329	5299
Kuzhugchen PHC		3999	2807	6806
Lingzhi PHC		2359	96	2455
Motithang THC		7170	6571	13741
RBP HQ Clinic		3996	1915	5911
Soe PHC	462	41	503	

Dzongkhag	Health Facilities	Type		Total
		New	Old	
Trashhi Yangtse	Dungzam PHC	2618	176	2794
	Jamkhar PHC	1616	267	1883
	Jangphutse Sub-Post	964	34	998
	Khi Nyel PHC	3325	484	3809
	Melongkhar PHC	431	9	440
	Rabtey Sub-Post	543	115	658
	Ramjar PHC	1009	728	1737
	Thragom PHC	1027	409	1436
	Tongmizhangsa PHC	2873	120	2993
Trashigang	Bidoong PHC	1387	1882	3269
	Bikhar PHC	2364	1372	3736
	Chaling PHC	1346	478	1824
	Chhangmi PHC	2719	983	3702
	Joenkhar Sub-Post	744	162	906
	Kangpar PHC	1861	1554	3415
	Lumang PHC	473	201	674
	Merag PHC	1621	923	2544
	Passaphoog Sub-Post	307	346	653
	Phegpari Sub-Post	1025	744	1769
	Phongmed PHC	2477	1124	3601
	Radi PHC	1497	5986	7483
	Sagteng PHC	2832	712	3544
	Thongrong Sub-Post	287	117	404
	Thoongkhar PHC	1193	585	1778
	Udzorong PHC	7323	1393	8716
Yabrang PHC	568	473	1041	
Yangnyer PHC	2781	3089	5870	

Dzongkhag	Health Facilities	Type		Total
		New	Old	
Trongsa	Bemji PHC	2033	921	2954
	Jangbi PHC	1214	213	1427
	Kella Sub-Post	1030	278	1308
	Korphoog PHC	565	208	773
	Kuengarabten PHC	5178	2753	7931
	Nabji Sub-Post	633		633
	Nimshong Sub-Post	661	65	726
	Taktse PHC	156	64	220
	Trashiling PHC	6122	1391	7513
Tsirang	Barshong PHC	1653	961	2614
	Doonglagang PHC	3500	2930	6430
	Mendrelgang PHC	3388	1575	4963
	Patshaling Sub-Post	1114	777	1891
	Pungtenchhu PHC	2592	1014	3606
	Semjong PHC	2576	169	2745
	Sergithang PHC	2443	2009	4452
Wangdue	Bjemithangkha PHC	4864	3613	8477
	Dangchhu PHC	3382	592	3974
	Gangteng Sub-Post	2166	491	2657
	Gaselo PHC	4199	1604	5803
	Habesa Sub-post	395	473	868
	Jala Ula PHC	1782	1043	2825
	Kamichhu PHC	5371	4948	10319
	Kazhi PHC	3412	1164	4576
	Khotokha Sub-Post	1572	750	2322
	Lopokha Sub-Post	352	128	480
	Migtana Sub-Post	745	141	886

Dzongkhag	Health Facilities	Type		Total
		New	Old	
Wangdue	Nahi Sub-Post	449	60	509
	Nobding Sub-Post	2135	796	2931
	Ramachen Sub-Post	0		0
	Saephoog PHC	6046	2280	8326
	Samtengang PHC	5626	3333	8959
	Taksha Sub-Post	828	126	954
	Teki Agona PHC	2562	1209	3771
	Uma PHC	1319	277	1596
Zhemgang	Bjoka PHC	2480	1015	3495
	Duenmang Sub-Post	562	315	877
	Gongphu PHC	997	774	1771
	Goshing PHC	1667	655	2322
	Kagtong PHC	992	426	1418
	Khomshar PHC	2544	631	3175
	Kradijong PHC	746	280	1026
	Langdorbi PHC	1012	1158	2170
	Manas PHC	281	215	496
	Namregang PHC	604	212	816
	Nimshong Sub-Post	685	564	1249
	Pantang PHC	3449	1429	4878
	Shingkhar PHC	2361	993	3354
Tashibi Sub-Post	1932	450	2382	
Tshaidang PHC	896	433	1329	

Table 2.7: Trend in Morbidity in Bhutan

Code#	Name of Disease	Year					
		2017	2018	2019	2020	2021	2022
Infections							
A02 ^G	Diarrhoea	41418	39504	42366	25264	27358	29085
A03 ^G	Dysentery	5638	4565	4679	2834	2691	2987
A15 ^G	Tuberculosis ^B	929	860	936	676	744	695
A41 ^G	Other Sepsis (including Septicaemia)	920	644	555	626	462	407
A50	Congenital Syphilis	1	8	13	11	10	5
A51 ^G	Genital Ulcer	162	243	196	159	225	142
A53 ^G	Syphilis	93	201	199	213	464	145
A54 ^G	Urethral/Vaginal discharges	2788	3617	5730	4880	4415	4932
A63 ^G	Other Sexually Transmitted Disease, excldg HIV/AIDS	1136	1038	875	712	785	616
A77 ^G	Rickettsial Disease ^B	755	1392	1273	687	400	323
Viral, Protozoal & Helminthic Diseases							
B01	Chicken Pox	2747	2751	3512	783	2253	2423
B15	Acute Hepatitis A	121	45	47	90	44	17
B16	Acute Hepatitis B	348	309	130	71	88	73
B17 ^G	Other Acute Hepatitis (includes Hepatitis C&E)	163	114	64	33	99	41
B50	Plasmodium falciparum Malaria	10	17	11	8	4	13
B51	Plasmodium Vivax Malaria	52	36	31	46	18	7
B53 ^G	Other Malaria	0	1	0	0	1	18
B55	Visceral Leishmaniasis (Kala-azar)	78	23	24	21	3	
B65 ^G	Intestinal Worms	2270	2634	2365	2266	2353	2276
B86	Scabies	7904	8991	10658	12299	9053	7422
B95	Streptococcus Group AB	178	211	202	135	206	63
BAZ ^G	Other infections (exclude ear, brain, STI)	16988	13535	27560	9142	8832	9197
Neoplasm							
C15 ^G	Oesophagus Cancer	46	55	65	94	50	45
C16 ^G	Stomach/ Gastric Cancer	139	139	190	223	285	604
C18 ^G	Colon Cancer	48	63	47	97	95	91
C20	Rectal Cancer	30	55	57	90	84	75
C24 ^G	Hepato-Biliary Cancer	38	26	37	16	15	14
C25 ^G	Pancreatic Cancer	8	12	22	7	21	7
C50 ^G	Breast Cancer	38	50	65	54	84	63
C53 ^G	Cervical cancer	102	198	135	164	109	117
CZZ ^G	Other Cancers	913	677	906	743	690	612
Blood diseases							

Code#	Name of Disease	Year					
		2017	2018	2019	2020	2021	2022
D00 ^G	Neoplasm (benign + CIS)	467	399	425	587	648	446
D50 ^G	Nutritional Anaemia	11770	11641	11806	9161	9011	8020
D55 ^G	Blood & Immune Disorders	1233	1520	1229	1187	999	892
Endocrine, Metabolic & Nutritional							
E10*	DiabetesB	6364	5716	5472	6150	9138	12373
E40*	Malnutrition (exclude child clinic attendance)	130	196	111	112	87	161
EZZ*	Other Nutritional & Metabolic Disorders	3664	3776	3746	3862	4995	4512
Mental disorders							
F03 ^G	Dementia	18	33	28	36	34	59
F10	Mental and behavioral disorders due to alcohol	925	1011	1346	1505	1906	2157
F19 ^G	Mental and behavioral disorders due to multiple drug use & other use of psychoactive substances	193	326	326	303	579	702
F20 ^G	Psychosis	160	239	391	463	971	707
F31 ^G	Depression	503	702	762	1190	2410	2082
F40 ^G	Anxiety	1147	1318	1370	2164	4131	3441
FZZ ^G	Other Mental Disorders	1354	1438	1730	1233	1716	1890
Disease of the Nervous system							
G00 ^G	Meningitis/Encephalitis	281	262	192	188	207	170
G40 ^G	Epilepsy	1132	1122	1225	1491	2362	2102
GZZ ^G	Other Nervous including Peripheral Disorders	62962	64515	67399	64035	68229	65538
Diseases of Eye & Ear							
H10	Conjunctivitis	21764	22637	22196	13131	12797	12217
H25 ^G	CataractB	594	796	1232	872	1700	2093
H52 ^G	Disorders of Refraction & Accommodation (Refractive Error in the Eye)	2518	4470	5346	3615	7332	5722
H22 ^G	Other Eye Disorders	46097	47221	47334	42857	47232	46828
H65 ^G	Otitis Media	12158	11445	12175	9018	9197	9759
H90 ^G	Other Ear Disorders	14918	15944	15606	11852	14177	14340
Diseases of Circulatory System							
I00 ^G	Rheumatic Heart DiseaseB	1382	1509	622	516	801	686
I10 ^G	Hypertension	21757	24977	22338	18787	22997	25770
I20 ^G	Ischaemic Heart DiseasesB	212	549	474	225	209	439
I60 ^G	Cerebro-vascular DiseasesB	460	560	442	428	620	576
I88 ^G	Bubo	32	52	12	19	101	76
IZZ ^G	Other Circulatory Diseases	7699	7573	6814	5828	6824	4721
Respiratory Diseases							
J00	Common Cold	234463	231685	264298	147636	142872	197774

Code#	Name of Disease	Year					
		2017	2018	2019	2020	2021	2022
J02 ^G	Acute Pharyngitis/ Tonsillitis	69524	61504	65344	30371	33338	42379
J12 ^G	Pneumonia	8489	7324	6321	2881	3181	4212
J45	Asthma	1660	1638	1661	1719	1868	2311
JZZ ^G	Other Respiratory & Nose Diseases	58319	63722	64355	44213	48608	61836
Diseases of the Digestive system							
K00 ^G	Diseases of Teeth & Gums	21030	32759	34121	32746	37140	31575
K02	Dental Caries	40368	47549	51282	42154	47990	42768
K20 ^G	Peptic Ulcer Syndrome	52336	51496	54927	43227	46032	42983
K35	Acute AppendicitisB	953	701	995	937	1104	1299
K70	Alcoholic Liver Disease	2731	2732	2771	2588	2392	2387
K80 ^G	Gall Bladder DiseasesB	863	998	923	1656	1784	1280
KZZ ^G	Other Diseases of the Digestive System	97083	92752	95141	78857	92500	87505
Diseases of the Skin and Subcutaneous Tissue							
L00 ^G	Skin Infections	83500	78476	82144	67972	67620	58956
LZZ ^G	Other Disorders of Skin and Subcutaneous tissue	96344	98792	99200	93923	91453	83679
Diseases of Musculo-skeletal system & Congenital Deformities							
M00 ^G	Arthritis & Arthrosis	8914	9598	9922	8630	7963	8021
MZZ ^G	Other Musculo-Skeletal Disorders	91476	90908	92434	84197	87778	82208
Diseases of Genito-Urinary diseases							
N30	CystitisB	2451	2247	1901	1026	1306	1007
N61 ^G	Infections of the Breast, Including Puerperium	369	360	285	295	284	243
N62 ^G	Other diseases of the Breast	1170	1209	959	932	1055	857
N70 ^G	Pelvic Inflammatory DiseaseB	901	1327	1018	1163	2775	2706
N91 ^G	Menstrual Disturbances	3900	4205	3822	4263	5420	4785
NZZ ^G	Other Kidney, UT/Genital Disorders	38361	35157	35657	35630	31530	33937
Pregnancy, Childbirth and Puerperium							
O00 ^G	Abortions	1344	1440	1271	1111	1008	849
O13 ^G	Pregnancy Induced Hypertension	525	779	457	427	550	462
O20 ^G	Ante-Partum Haemorrhage & Placenta Previa	133	589	194	258	238	251
O32	Malpresentation	199	95	78	91	183	120
O63	Prolonged Labour	211	256	245	182	218	195
O64 ^G	Obstructed Labour	45	55	53	44	53	56
O72	Post-Partum Haemorrhage	173	116	125	127	126	87
O73	Retained Placenta	81	103	103	84	69	60
O85 ^G	Puerperal Sepsis	154	90	72	87	104	68
OZZ ^G	Other Complications of Pregnancy	7450	8363	6907	7335	7500	7033
Certain Conditions Originating in the Perinatal Period							

Code#	Name of Disease	Year					
		2017	2018	2019	2020	2021	2022
P05	Low Birth Weight	442	505	324		349	321
P95	Foetal Death & Stillbirth	68	59	50		29	16
P96	Neonatal Death	72	77	81		89	43
PZZ ^G	Conditions Originating in the Perinatal period	3146	3310	3764		3530	2864
Congenital Malformations, Deformations and Chromosomal abnormalities							
Q36 ^G	Oro-facial Clefts	13	15	15	13	24	12
Q45 ^G	Gastrointestinal Tract defectsB	5	8	2	0	6	5
Q66 ^G	Talipes Equinovarus	1	1	0	0	2	
Q79 ^G	Omphalocele	2	5	2	0	2	1
QZZ ^G	Other Malformations	499	399	459	298	456	355
Injury, Poisoning and certain other consequences of External Causes							
T65	Mushroom Poisoning (Toxic effect of other unspecified substances)	239	203	139	195	144	86
V01 ^G	Transport Accidents	1823	2200	1897	1427	1321	1744
W00 ^G	Accidental Falls	6734	6440	7121	5945	6426	5772
W50 ^G	Other Bites and Sting (excluding dog bite)	4139	4102	4171	3789	4315	3915
W54	Dog Bites	6420	6761	7083	6430	6873	6374
W65 ^G	Drowning & Submersion	126	80	76	75	68	77
W86*	Exposure to Electric Current	81	66	61	56	80	72
X00*	Contact with Heat & Hot substances & exposure to smoke, fire, flames	2297	2104	2144	2191	2543	1811
X20	Snake Bite	209	186	206	220	203	223
X21*	Contact with Venomous animals (excluding Snake bite)	62	71	39	93	105	41
X40 ^G	Accidental Poisoning by and Exposure to Noxious substances	141	110	113	129	118	85
X60 ^G	Intentional Self-harm by Poisoning	132	97	81	84	84	68
X71	Intentional Self-harm by Drowning & Submersion	17	16	3	11	4	5
X90	Assault by Poisoning (includes homicidal poisoning)	22	18	12	19	8	10
X92	Assault by Drowning and Submersion	41	24	4	6	8	4
XZZ ^G	Other Intentional Self-harm	343	229	280	284	157	270
Y96	Work Related Injuries	27548	26578	24225	23053	20840	21301
YYY ^G	Others (injuries other than above & unknown cause of injury)	21596	21643	20203	17386	20253	18064
Other Conditions							
YZZ ^G	Complications of Health Care	1376	1399	909	790	1269	812
ZZZ ^G	ANC, Immunization & Other Counselling	80013	76015	73037	75472	69325	72670
Total		1391312	1395736	1460787	1137987	1198024	1231916
Total Old Cases all causes							
ZZZZ	Total Old Cases all causes	1265337	1247813	814362	744697	863035	877541

Table 2.8: Mortality cases by diseases for last 5 years, Bhutan

Code#	Name of Disease	Year					
		2017	2018	2019	2020	2021	2022
A02 ^G	Diarrhoea	1	6	6	1		2
A03 ^G	Dysentery	0	0	0	1		
A15 ^G	TuberculosisB	10	22	20	27	31	17
A41 ^G	Other Sepsis (including Septicaemia)	158	62	46	104	32	45
A50	Congenital Syphilis	0	0	0			
A51 ^G	Genital Ulcer	0	0	0	1		
A53 ^G	Syphilis	0	0	0			
A54 ^G	Urethral/Vaginal discharges	0	0	0			
A63 ^G	Other Sexually Transmitted Disease, exclgd HIV/AIDS	0	0	1		1	1
A77 ^G	Rickettsial DiseaseB	3	2	2	2	1	2
Viral, Protozoal & Helminthic Diseases							
B01	Chicken Pox	0	0	0			
B15	Acute Hepatitis A	0	0	0	1		
B16	Acute Hepatitis B	4	2	1	1	2	2
B17 ^G	Other Acute Hepatitis (includes Hepatitis C&E)	3	2	2	1	3	2
B50	Plasmodium falciparum Malaria	1	1	0	0	0	
B51	Plasmodium Vivax Malaria	0	0	0	0	0	
B53 ^G	Other Malaria	0	0	0	0	0	
B55	Visceral Leishmaniasis (Kala-azar)	0	0	0	0	0	
B65 ^G	Intestinal Worms	0	0	0	1	1	
B86	Scabies	0	1	0			
B95	Streptococcus Group AB	0	0	0			
BAZ ^G	Other infections (exclude ear, brain, STI)	19	12	13	22	6	10
Neoplasm							
C15 ^G	Oesophagus Cancer	15	8	14	7	10	7
C16 ^G	Stomach/ Gastric Cancer	23	20	30	8	35	24
C18 ^G	Colon Cancer	8	3	7	4	5	5
C20	Rectal Cancer	5	3	10	3	2	4
C24 ^G	Hepato-Biliary Cancer	14	8	11	3	8	3
C25 ^G	Pancreatic Cancer	2	5	7		4	2
C50 ^G	Breast Cancer	2	2	5		13	5
C53 ^G	Cervical cancer	2	9	9	6	4	10
CZZ ^G	Other Cancers	59	87	92	96	71	87
Blood diseases							

Code#	Name of Disease	Year					
		2017	2018	2019	2020	2021	2022
D00 ^G	Neoplasm (benign + CIS)	4	4	3	6	3	1
D50 ^G	Nutritional Anaemia	6	5	8	3	2	1
D55 ^G	Blood & Immune Disorders	8	9	9	11	2	9
Endocrine, Metabolic & Nutritional							
E10*	DiabetesB	18	11	22	14	14	21
E40*	Malnutrition (exclude child clinic attendance)	0	1	1	1	1	
EZZ*	Other Nutritional & Metabolic Disorders	7	4	8	7	10	10
Mental disorders							
F03 ^G	Dementia	0	0	0			
F10	Mental and behavioral disorders due to alcohol	0	2	2	2	3	5
F19 ^G	Mental and behavioral disorders due to multiple drug use & other use of psychoactive substances	0	0	2	1	1	
F20 ^G	Psychosis	0	0	0			
F31 ^G	Depression	1	0	1			
F40 ^G	Anxiety	0	0	0			
FZZ ^G	Other Mental Disorders	1	2	0			1
Disease of Nervous system							
G00 ^G	Meningitis/Encephalitis	45	29	16	47	10	21
G40 ^G	Epilepsy	1	1	4	6	11	11
GZZ ^G	Other Nervous including Peripheral Disorders	26	13	40	16	14	22
Eye & Ear Diseases							
H10	Conjunctivitis	0	0	0	2		
H25 ^G	CataractB	0	0	0			
H52 ^G	Disorders of Refraction & Accommodation (Refractive Error in the Eye)	0	0	0			
H2Z ^G	Other Eye Disorders	0	2	14	12	1	1
H65 ^G	Otitis Media	1	0	0			
H90 ^G	Other Ear Disorders	0	5	1			
Diseases of Circulatory System							
I00 ^G	Rheumatic Heart DiseaseB	5	7	8	4	8	7
I10 ^G	Hypertension	20	21	18	23	17	27
I20 ^G	Ischaemic Heart DiseasesB	15	12	8	12	5	19
I60 ^G	Cerebro-vascular DiseasesB	61	78	81	71	68	68
I88 ^G	Bubo	0	0	0	1		2
IZZ ^G	Other Circulatory Diseases	113	104	107	154	89	98
Respiratory Diseases							

Code#	Name of Disease	Year					
		2017	2018	2019	2020	2021	2022
J00	Common Cold	0	5	0	1	6	4
J02 ^G	Acute Pharyngitis/ Tonsillitis	2	0	1	10	3	1
J12 ^G	Pneumonia	74	87	72	88	35	53
J45	Asthma	3	13	4	9	11	10
JZZ ^G	Other Respiratory & Nose Diseases	101	99	104	90	54	85
Diseases of the Digestive system							
K00 ^G	Diseases of Teeth & Gums	0	0	0			
K02	Dental Caries	0	0	0			
K20 ^G	Peptic Ulcer Syndrome	3	2	18	3	5	6
K35	Acute AppendicitisB	2	2	2	2	3	2
K70	Alcoholic Liver Disease	167	113	139	190	141	146
K80 ^G	Gall Bladder DiseasesB	1	4	6	3	7	20
KZZ ^G	Other Diseases of the Digestive System	46	90	79	44	44	59
Diseases of the Skin and Subcutaneous Tissue							
L00 ^G	Skin Infections	0	3	1	1		
LZZ ^G	Other Disorders of Skin and Subcutaneous tissue	5	1	9	5	11	2
Diseases of Musculo-skeletal system & Congenital Deformities							
M00 ^G	Arthritis & Arthrosis	0	0	6			
MZZ ^G	Other Musculo-Skeletal Disorders	8	17	8	3	6	11
Diseases of Genito-Urinary diseases							
N30	CystitisB	1	0	0	5		1
N61 ^G	Infections of the Breast, Including Puerperium	0	0	0			
N62 ^G	Other diseases of the Breast	0	0	0			
N70 ^G	Pelvic Inflammatory DiseaseB	0	0	0			
N91 ^G	Menstrual Disturbances	0	0	1			
NZZ ^G	Other Kidney, UT/Genital Disorders	38	74	64	78	45	43
Pregnancy, Childbirth and Puerperium							
O00 ^G	Abortions	0	0	3		3	4
O13 ^G	Pregnancy Induced Hypertension	1	1	4	1		4
O20 ^G	Ante-Partum Haemorrhage & Placenta Previa	1	0	0			1
O32	Malpresentation	0	0	1			
O63	Prolonged Labour	2	0	7	1	1	
O64 ^G	Obstructed Labour	0	0	0			
O72	Post-Partum Heamorrhage	0	0	1	4		
O73	Retained Placenta	0	0	1		1	1
O85 ^G	Puerperal Sepsis	0	1	0			

Code#	Name of Disease	Year					
		2017	2018	2019	2020	2021	2022
OZZ ^G	Other Complications of Pregnancy	2	6	6	1	6	18
Certain Conditions Originating in the Perinatal Period							
P05	Low Birth Weight	15	17	11	38	30	22
P95	Foetal Death & Stillbirth	68	59	50	54		
P96	Neonatal Death	72	77	81	13		
PZZ ^G	Conditions Originating in the Perinatal period	41	35	23	49	19	22
Congenital Malformations, Deformations and Chromosomal abnormalities							
Q36 ^G	Oro-facial Clefts	0	0	0		1	
Q45 ^G	Gastrointestinal Tract defectsB	0	0	0			
Q66 ^G	Talipes Equinovarus	0	0	0	1		
Q79 ^G	Omphalocele	0	0	0			
QZZ ^G	Other Malformations	9	16	9	22	19	15
Injury, Poisoning and certain other consequences of External Causes							
T65	Mushroom Poisoning (Toxic effect of other unspecified substances)	0	0	1	4	1	1
V01 ^G	Transport Accidents	16	17	18	20	8	8
W00 ^G	Accidental Falls	14	19	9	14	8	16
W50 ^G	Other Bites and Sting (excluding dog bite)	0	1	0			4
W54	Dog Bites	4	0	0	1		
W65 ^G	Drowning & Submersion	0	0	0		2	2
W86*	Exposure to Electric Current	0	2	0	2		2
X00*	Contact with Heat & Hot substances & exposure to smoke, fire, flames	6	7	0	1	5	3
X20	Snake Bite	1	0	0	3		2
X21*	Contact with Venomous animals (excluding Snake bite)	0	0	1	1		2
X40 ^G	Accidental Poisoning by and Exposure to Noxious substances	1	0	2		1	
X60 ^G	Intentional Self-harm by Poisoning	3	3	1	6	5	
X71	Intentional Self-harm by Drowning & Submersion	2	0	0			
X90	Assault by Poisoning (includes homicidal poisoning)	0	1	0			
X92	Assault by Drowning and Submersion	0	0	0	1		
XZZ ^G	Other Intentional Self-harm	2	5	1	2	2	
Y96	Work Related Injuries	2	1	1	1	5	3
YYY ^G	Others (injuries other than above & unknown cause of injury)	28	21	16	25	10	10
Other Conditions							
YZZ ^G	Complications of Health Care	2	11	9	5	1	1
ZZZ ^G	ANC, Immunization & Other Counselling	5	6	1	8	18	1

SECTION 3: REPRODUCTIVE, MATERNAL, NEWBORN AND CHILD HEALTH

Table 3.1: Antenatal care (clinical attendance)

District	ANC attendance				
	ANC 1st trimester	ANC 2nd trimester	ANC 3rd trimester	ANC4 Visit	ANC8 visit
Bumthang	153	522	921	233	97
Chhukha	444	2096	2935	1004	222
Dagana	187	559	917	272	207
Gasa	31	76	115	22	8
Haa	96	270	469	160	48
Lhuentse	121	392	534	183	99
Monggar	375	983	1760	440	318
Paro	361	1442	2618	661	180
Pemagatshel	224	592	848	268	98
Punakha	164	681	1049	287	74
Samdrup Jongkhar	296	1022	1561	310	213
Samtse	400	1477	2545	632	323
Sarpang	613	1511	2833	319	217
Thimphu	1351	4325	8159	2004	756
Trashhi Yangtse	175	397	715	141	71
Trashigang	343	1086	1764	333	138
Trongsa	134	424	649	176	39
Tsirang	155	617	948	238	105
Wangdue	328	1039	1853	541	281
Zhemgang	157	402	544	172	41
Total	6108	19913	33737	8396	3535

Table 3.2: Deliveries attended by trained health personnel and Post-natal care (clinical attendance)

Dzongkhag	Deliveries attended by trained personnel		
	Home	Facility	Total
Bumthang	1	211	212
Chhukha	8	803	811
Dagana	4	130	134
Gasa	4	3	7
Haa	2	21	23
Lhuentse	10	57	67
Monggar	2	932	934
Paro		272	272
Pemagatshel	2	118	120
Punakha	1	156	157
Samdrup Jongkhar	12	359	371
Samtse	8	548	556
Sarpang	2	950	952
Thimphu	15	3233	3248
Trashigang	6	623	629
Trongsa	5	56	61
Tsirang		184	184
Wangdue	2	534	536
Zhemgang	5	89	94
Total	90	9400	9490

No of deliveries by Forceps/Vacuum	Post-Natal care (Clinic attendance by mothers)			
	1st Visit	2nd visit	3rd Visit	4th Visit
0	136	170	188	206
2	341	527	598	715
1	145	183	217	230
0	8	12	23	33
0	24	62	98	114
0	134	174	170	142
0	411	461	458	400
0	248	588	682	614
0	122	173	190	202
1	93	207	259	254
2	330	365	404	340
3	179	458	499	548
9	624	647	554	492
119	1605	3063	2357	2470
0	135	174	184	184
0	304	415	437	384
0	66	79	127	116
2	134	198	242	233
9	221	363	424	432
3	65	85	115	135
151	5325	8404	8226	8244

Table 3.3: Family planning method

Districts	Type		
	New IUD Inserted	Oral Pills (No. of cycles issued)	DMPA (No. injected)
Bumthang	50	1581	1872
Chhukha	99	4730	5794
Dagana	37	3332	3145
Gasa	4	658	534
Haa	16	1131	1289
Lhuentse	21	1131	1435
Monggar	122	3211	6216
Paro	49	2672	5424
Pemagatshel	20	2039	2339
Punakha	46	2161	3091
Samdrup Jongkhar	27	3911	4020
Samtse	34	9665	8553
Sarpang	139	4921	6313
Thimphu	462	4894	8658
Trashigang	53	3590	5424
Trongsa	57	1128	1524
Tsirang	29	2970	3293
Wangdue	99	3674	3708
Zhemgang	27	1569	2824
Total	1458	60398	77625

Note:

* Cumulative figure, collected from Annual household survey.

Oral pills = 1 user is equal to 13 cycles or 12 cycles

DMPA= 1 user is equal to 4 injections

Type		
Vasectomy	Tubectomy	No. of Condoms Issued (In pieces)
16	79	60674
1	1	52672
80	81	24625
1	15	6239
17	79	14527
43	88	25915
179	281	80682
18	72	29466
87	163	32599
54	112	35536
		37454
1163	543	59836
212	443	61556
71	127	188171
		26915
206	244	53684
		41029
35	25	37444
511	655	76537
63	69	26382
2757	3077	971943

Table 3.4: Immunization Status by Districts, 2022

Districts	Antigen				
	BCG	MMR1	OPV 0	OPV 3	DTP-Hep B 3
Bumthang	206	285	198	284	283
Chhukha	767	893	739	952	955
Dagana	197	322	185	325	324
Gasa	8	46	5	37	37
Haa	71	160	61	161	160
Lhuentse	66	156	72	175	178
Monggar	387	475	377	539	537
Paro	654	816	630	851	851
Pemagatshel	142	266	121	266	265
Punakha	290	357	312	315	318
Samdrup Jongkhar	350	465	339	468	469
Samtse	610	784	596	765	765
Sarpang	853	671	830	640	642
Thimphu	3552	2704	3490	2592	2591
Trashigang	487	480	401	497	502
Trongsa	98	241	98	200	201
Tsirang	190	287	153	277	278
Wangdue	465	610	397	625	621
Zhemgang	79	186	71	224	224
Total	9641	10410	9236	10413	10422

Distribution of Health facilities (Hospitals and PHCs) by District

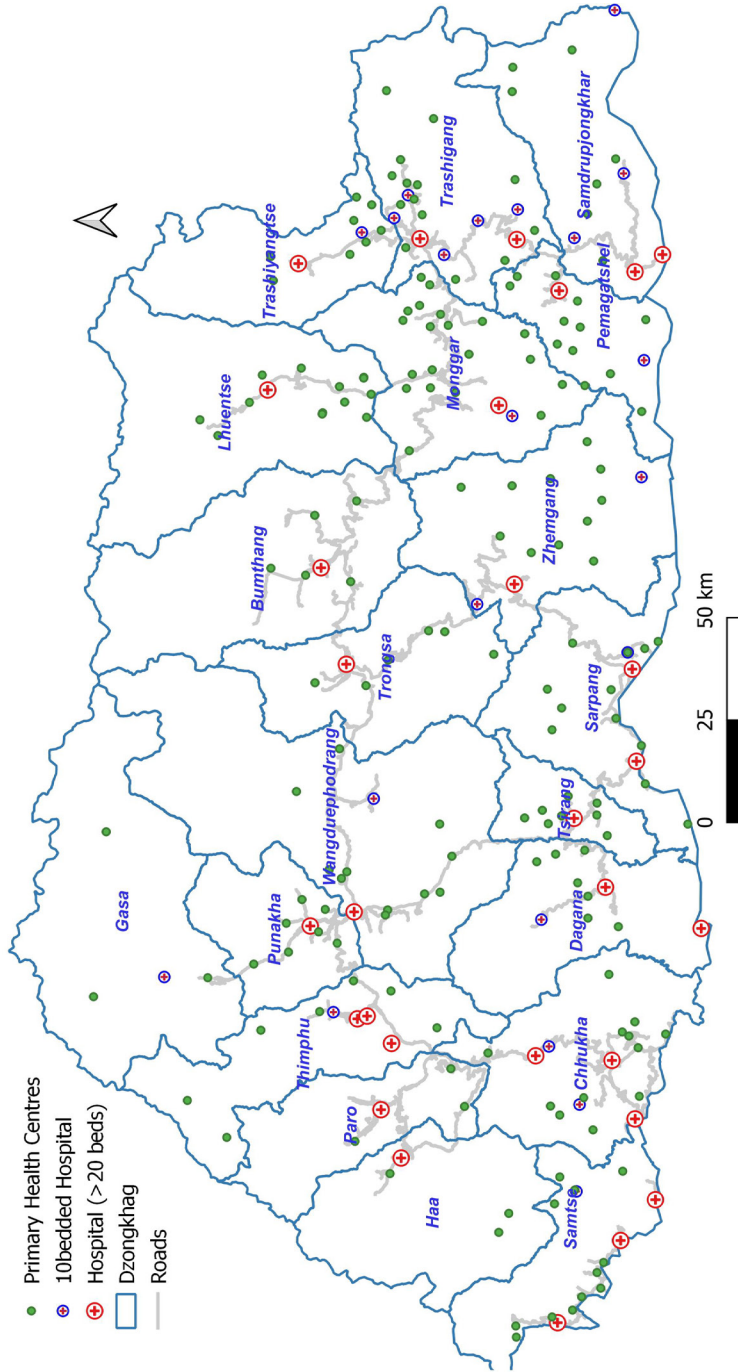


Table 3.5: Deliveries attended by trained health personnel and post-natal care (clinical attendance) by health facility, 2022

Districts	Facility Name	Trained Deliveries		Vaccination Services	
		Home	Facility	BCG	OPV 3
Bumthang	Bumthang Hospital		181	142	153
	Chhoekhor Toe PHC		3	6	12
	Chhumig PHC		9	21	53
	Dhur PHC	1	4	11	14
	Tang PHC		4	10	24
	Ura PHC		10	16	28
Chhukha	Arikha PHC		1	8	27
	Baikunza Sub-Post				
	Bongo PHC	1	1	3	8
	Chapchha PHC		1	6	23
	Chhukha Hospital		45	47	51
	Chimuna Sub-Post				
	Chong Geykha PHC	1		11	19
	Darla PHC		24	27	26

Vaccination Services		Family Planning				
DTP-Hep B-Hib	MMR1	Oral Pills (in cycles)	DMPA (injected)	Current IUD user	Tubectomy	Vasectomy
449	155	534	705			
45	11	321	193	9	25	11
129	55	190	402			
38	11	67	67			
66	28	196	305	6	22	4
76	25	273	200	16	32	1
68	22	90	132			
		1	20			
30	4	41	113			
60	19	88	221			
180	44	188	224			
12	4	23	47			
57	19	262	271			
80	26	200	358			

Districts	Facility Name	Trained Deliveries		Vaccination Services	
		Home	Facility	BCG	OPV 3
Chhukha	Doongna PHC		1	10	17
	Gedu Hospital		71	46	70
	Getana PHC		3	6	17
	Kamji PHC				
	Khatikha Hospital		3	5	10
	Loggchina PHC	3	2	16	28
	Metakha PHC			3	11
	Phuentshogling Hospital	3	624	495	502
	Rangaytung PHC			3	20
	Renchentse PHC		1	12	14
	Sinchula PHC		3	11	27
	Tashigatshel RBP MI Room				
	Tsimalakha Hospital		23	58	82
Dagana	Akhochen PHC		1	4	22
	Dagana Hospital		15	22	39

Vaccination Services		Family Planning				
DTP-Hep B-Hib	MMR1	Oral Pills (in cycles)	DMPA (injected)	Current IUD user	Tubectomy	Vasectomy
52	19	234	182			
223	77	314	450			
49	16	108	241			
1	2	43	39			
28	8	164	138			
78	25	387	309	2	1	1
31	16	96	159			
1424	469	1501	1786			
54	16	183	229			
37	17	153	176			
73	26	250	199			
		94	62			
247	64	310	438			
54	18	210	172	9	15	10
120	36	169	409			

Districts	Facility Name	Trained Deliveries		Vaccination Services	
		Home	Facility	BCG	OPV 3
Dagana	Dagapela Hospital		83	91	106
	Drukjeygang PHC	3	4	13	24
	Jurugang PHC		4	3	9
	Khagochen PHC		1	18	24
	Lagyab PHC			3	9
	Lhamoizingkha Hospital		14	27	54
	Nyimtola PHC		1	2	10
	Tsangkha PHC	1	7	14	28
Gasa	Damji PHC		1	2	9
	Gasa Hospital	1	1	3	19
	Laya PHC		1	1	6
	Lunana PHC	3		2	3
Haa	Bebji Sub-Post			4	6
	Dorithasa PHC				
	Haa Hospital	2	21	56	110

Vaccination Services		Family Planning				
DTP-Hep B-Hib	MMR1	Oral Pills (in cycles)	DMPA (injected)	Current IUD user	Tubectomy	Vasectomy
324	100	991	626			
71	31	427	394	9	35	40
36	15	94	152			
69	24	279	426			
27	13	164	165			
143	57	467	411	5	18	25
27	10	92	102			
68	18	439	288		13	5
28	10	17	56	3	15	1
60	20	67	108			
16	12	400	225	6		
10	4	174	145			
18	4	69	94	2	7	3
2	1	7	13			
335	112	671	662			

Districts	Facility Name	Trained Deliveries		Vaccination Services	
		Home	Facility	BCG	OPV 3
Haa	Ngetshena PHC				4
	Sangbay Dungkhag Sub-Post			2	9
	Sangbay PHC				5
	Yangthang PHC			9	27
Lhuentse	Autsho PHC		2	3	12
	Dangling PHC				3
	Dungkar PHC		3	4	14
	Ganglakhema PHC		2		2
	Gortshom PHC	1	4	3	11
	Khoma PHC			5	11
	Ladrong PHC		14	13	13
	Lhuentse Hospital		19	21	28
	Minjey PHC	9		5	20
	Ney PHC		1	1	9
Patpachhu PHC		4	2	7	

Vaccination Services		Family Planning				
DTP-Hep B-Hib	MMR1	Oral Pills (in cycles)	DMPA (injected)	Current IUD user	Tubectomy	Vasectomy
15	3	111	76			
28	6	39	120			
18	5	60	107		2	
94	29	174	217	7	70	14
38	15	125	155			
9	6	27	37	8	7	1
48	12	75	65			
6	1	79	72			
31	9	46	105			
34	8	113	83	34	32	7
38	12	38	57			
77	16	243	164			
61	17	67	216			
24	11	30	43	3	10	11
22	6	76	102	2	2	10

Districts	Facility Name	Trained Deliveries		Vaccination Services	
		Home	Facility	BCG	OPV 3
Lhuentse	Tagmachhu PHC		2	2	16
	Thimyul PHC		3	4	14
	Tsaenkhar PHC		3	3	6
	Zangkhar PHC				9
Monggar	Baanjar PHC		1	1	3
	Balam PHC		43	6	20
	Boompazor PHC		1	2	14
	Chagsakhar PHC		15	11	36
	Chhaling PHC		6	8	15
	Daagsa PHC				6
	Dramedtse PHC		38	17	46
	Ganglapong PHC		2	1	3
	Gyalpoizhing Hospital		23	27	49
	Jurmed PHC		6	12	27
Kengkhar PHC	2	7	7	18	

Vaccination Services		Family Planning				
DTP-Hep B-Hib	MMR1	Oral Pills (in cycles)	DMPA (injected)	Current IUD user	Tubectomy	Vasectomy
47	14	50	66	34	13	2
42	10	46	106			
32	10	85	104	15	18	7
21	9	31	60	11	6	5
8		19	29		2	2
57	14	163	199	31	9	19
40	8	17	260	33	26	1
101	31	215	349			
41	9	88	249	59	18	1
16	5	68	62	4		3
134	34	302	464	36	10	6
12	2		33	7	3	5
139	39	295	254			
79	20	26	186	48	15	3
50	11	163	357	6	11	

Districts	Facility Name	Trained Deliveries		Vaccination Services	
		Home	Facility	BCG	OPV 3
Monggar	Lingmethang PHC		38	18	48
	Monggar ERR Hospital		656	206	110
	Muhoong Sub-Post		3	1	3
	Nagor PHC				3
	Narang PHC		29	29	32
	Ngatshang PHC		5	4	6
	Pangthang Sub-Post				3
	Resa Sub-Post				
	Senggor PHC				2
	Serzhong PHC		18	5	21
	Silambi Sub-Post		4	1	7
	Tagkhambi Sub-Post				
	Thangrong PHC		18	14	17
	Tongla Sub-Post		2		5
Tsakaling PHC		3	4	11	

Vaccination Services		Family Planning				
DTP-Hep B-Hib	MMR1	Oral Pills (in cycles)	DMPA (injected)	Current IUD user	Tubectomy	Vasectomy
134	52	117	389	123	11	81
353	114	98	775	149	122	19
12		57	53	1	2	16
10	5	94	198			
78	30	171	208	6	5	7
18	11	54	199			
10	2	63	24	2	1	
	1	3	18	4		1
6	2	21	22			
62	20	136	252	10	17	5
23	10	126	145			
	2	2	5			
62	10	480	674			
17	3	108	387	10	6	
36	12	48	175	34	13	

Districts	Facility Name	Trained Deliveries		Vaccination Services	
		Home	Facility	BCG	OPV 3
Monggar	Tsamang PHC		7	5	9
	Yadi PHC		6	5	8
	Yangbari PHC		1	3	17
Paro	Bueltikha PHC		2	18	47
	Dawakha PHC		1	9	27
	Drugyal PHC			37	89
	Gunitsawa Sub-Post				7
	Pangbisa Sub-Post				
	Paro Hospital		269	590	681
Pemagatshel	Borangma Sub-Post				
	Chhimoong PHC		1	1	5
	Chhoekhorling PHC				
	Chongshing Sub-Post			1	1
	Dechhenling PHC		6	6	14
	Dungmaed PHC			1	3

Vaccination Services		Family Planning				
DTP-Hep B-Hib	MMR1	Oral Pills (in cycles)	DMPA (injected)	Current IUD user	Tubectomy	Vasectomy
23	8	20	40	2	10	10
29	10	87	90			
32	10	170	120			
145	60	275	492			
73	21	41	299	23	72	18
252	86	450	910			
25	7	39	100			
		25	48			
2047	642	1842	3575			
6	1	37	20	2	1	6
13	2	1	42		3	6
1		31	31	4		
3		34	38	2		
32	8	119	140	6	6	11
9	3	35	31			

Districts	Facility Name	Trained Deliveries		Vaccination Services	
		Home	Facility	BCG	OPV 3
Pemagatshel	Gonpa Singma PHC		7	4	11
	Khangma Sub-Post		1	1	1
	Mikuri Sub-Post		2	3	6
	Nanong PHC			7	16
	Naskhar Sub-Post				1
	Nganglam Hospital		53	47	110
	Norboogang PHC		1	3	5
	Pemagatshel Hospital		40	45	58
	Pretengma PHC		2	6	8
	Shali Sub-Post	1	1	9	11
	Thongsa Sub-Post		1	1	2
	Thrumchung PHC	1	1	2	4
	Tshatshi PHC		2	4	6
	Yurung PHC			1	4
Punakha	Goenshari PHC		1	1	6

Vaccination Services		Family Planning				
DTP-Hep B-Hib	MMR1	Oral Pills (in cycles)	DMPA (injected)	Current IUD user	Tubectomy	Vasectomy
29	10	70	60	1	2	9
4	4	46	80			
11	7	83	62	1		
49	22	109	217		2	
3		4	20			
327	105	784	590	24	93	22
13	9	34	148	12	5	15
180	67	295	415	11	47	18
27	4	78	73	2	1	
38	9	37	75			
5	1	28	45	3	2	
14	4		55		1	
20	7	103	133			
9	3	111	64			
16	10	64	95			

Districts	Facility Name	Trained Deliveries		Vaccination Services	
		Home	Facility	BCG	OPV 3
Punakha	Kabisa PHC		2	12	20
	Lobesa Sub-Post			18	61
	Nobugang PHC		2	2	15
	Punakha Hospital	1	146	227	140
	Samadingkha PHC		3	10	35
	Shengana PHC		2	6	15
	Thinleygang PHC			13	20
	Tshochasa PHC			1	3
Samdrup Jongkhar	Dewathang RBA Hospital		172	127	106
	Gomdar Hospital		18	9	17
	Jomotsangkha Hospital		31	21	38
	Lauri PHC	10	8	11	15
	Maenjiwoong PHC		4	6	17
	Martshala PHC		11	7	16
	Orong PHC		3	8	12

Vaccination Services		Family Planning				
DTP-Hep B-Hib	MMR1	Oral Pills (in cycles)	DMPA (injected)	Current IUD user	Tubectomy	Vasectomy
84	24	255	442			
181	47	220	330			
43	12	60	67			
489	195	1041	1437			
99	29	228	377	4	66	35
39	9	70	88			
75	26	166	194	1	46	19
10	5	57	61			
304	89	528	510			
51	19	68	314			
102	42	458	249			
50	17	55	121			
44	16	216	147			
44	16	161	266			
41	12	204	159			

Districts	Facility Name	Trained Deliveries		Vaccination Services	
		Home	Facility	BCG	OPV 3
Samdrup Jongkhar	Pemathang PHC	1	2	17	26
	Samdrup Jongkhar Hospital		47	57	76
	Samdrupchhoeling Hospital		58	62	88
	Samrang Sub-Post			1	4
	Sarjoong Sub-Post				5
	Wangphoog PHC		4	18	25
	Wooling Sub-Post	1		1	10
	Zangthi PHC		1	5	13
Samtse	Bara PHC		5	17	23
	Chengmari PHC			17	39
	Doongtoed PHC	1	4	10	21
	Dorokha Hospital	4	31	32	48
	Duenchukha PHC		1	5	16
	Ganthog PHC			9	20
	Gawaling Sub-Post		1	2	8

Vaccination Services		Family Planning				
DTP-Hep B-Hib	MMR1	Oral Pills (in cycles)	DMPA (injected)	Current IUD user	Tubectomy	Vasectomy
75	23	461	288			
217	92	253	328			
251	83	1083	881			
9	4	24	11			
10	3	96	141			
64	31	144	389			
17	7	97	79			
33	11	63	137			
70	22	546	207			
120	54	485	508		84	94
61	23	509	246	1	24	57
142	42	797	522	1	37	50
61	18	253	327	1	12	53
59	23	483	466		11	16
23	9	58	167			1

Districts	Facility Name	Trained Deliveries		Vaccination Services	
		Home	Facility	BCG	OPV 3
Samtse	Gomtu Hospital	1	35	58	104
	Panbari PHC			25	73
	Pemaling PHC		4	9	14
	Phendegang Sub-Post			6	7
	Samtse Hospital	1	382	281	144
	Sangngag Chhoeling PHC			5	18
	Sengteng PHC		5	10	20
	Sibsoo Hospital		71	65	92
	Tading Sub-Post				1
	Tendruk PHC		6	36	67
	Ugyentse PHC			3	15
Yoeseltse PHC	1	3	20	35	
Sarpang	Chhuzaggang Hospital		17	15	32
	Chokhorling PHC			18	82
	Gakidling PHC		2	1	14

Vaccination Services		Family Planning				
DTP-Hep B-Hib	MMR1	Oral Pills (in cycles)	DMPA (injected)	Current IUD user	Tubectomy	Vasectomy
295	90	1794	841	38	31	33
185	71	975	1283	9	30	241
45	18	290	207	1	28	53
24	9	158	133			
412	149	707	708	39	118	60
52	19	191	357	1		
60	28	385	287		13	27
286	84	1130	788	14	54	115
3	1	18	41			6
185	73	459	995	22	72	213
42	13	156	212	5	14	33
94	38	271	258	2	15	111
88	25	194	284	12	44	11
250	86	960	722		52	30
41	13	150	216		7	1

Districts	Facility Name	Trained Deliveries		Vaccination Services	
		Home	Facility	BCG	OPV 3
Sarpang	Gelegphu CRR Hospital	1	827	692	302
	Jangchubling PHC		5	16	23
	Jigme Chhoeling PHC		5	8	23
	Jigmedling PHC				
	Lhayul PHC		3	3	18
	Maenchhulam PHC		1		2
	Norbuling PHC		3	14	26
	Sarpang Hospital		61	69	83
	Seng Gey PHC	1	4	10	10
	Taraythang PHC		4		5
	Umling PHC		18	7	20
Thimphu	Babena THC			120	231
	Barshong PHC				
	Chamgang PHC			20	33
	Changjiji THC				

Vaccination Services		Family Planning				
DTP-Hep B-Hib	MMR1	Oral Pills (in cycles)	DMPA (injected)	Current IUD user	Tubectomy	Vasectomy
974	329	1326	1721	56	123	43
70	19	289	875		10	
64	24	204	400	7	49	29
		197	53			
57	16	406	330	8	8	7
10	3	58	44			
78	32	169	319	9	38	23
263	89	618	784	21	93	45
27	10	73	223	3	3	1
14	4	42	89		2	5
67	21	235	253	10	14	17
731	235	420	944			
	2	81				
99	29	218	260	11	52	11
		358	840			

Districts	Facility Name	Trained Deliveries		Vaccination Services	
		Home	Facility	BCG	OPV 3
Thimphu	CHD JDWNRH			2961	1550
	Dechhencholing Hospital			111	195
	Genyenkha PHC			8	13
	Gidakom Hospital		43	109	145
	Hongtsho PHC		1	11	19
	JDWNR Hospital	14	3189		
	Kuzhugchen PHC			27	52
	Lingzhi PHC	1		2	10
	Lungtenphu RBA Hospital			111	155
	Motithang THC			70	156
	RBP HQ Clinic			2	31
Soe PHC				2	
Trashigang	Dungzam PHC		2	16	36
	Jamkhar PHC		6	7	14
	Jangphutse Sub-Post		1	1	1

Vaccination Services		Family Planning				
DTP-Hep B-Hib	MMR1	Oral Pills (in cycles)	DMPA (injected)	Current IUD user	Tubecto-my	Vasecto-my
4915	1631	1364	2951			
571	211	656	1038			
45	17	36	97	14	39	30
429	157	506	453			
59	19	180	178	11	6	7
150	42	212	390	56	28	22
27	4	113	208		2	
488	153	238	451			
473	174	233	564			
83	28	274	264			
7	2	5	20			1
102	27	85	222			
36	9	92	135			
4	2	23	55			

Districts	Facility Name	Trained Deliveries		Vaccination Services	
		Home	Facility	BCG	OPV 3
Trashigang	Khamdang Hospital	1	50	54	58
	Khi Nyel PHC		4	9	10
	Melongkhar PHC		1	1	3
	Rabtey Sub-Post		2	4	6
	Ramjar PHC		8	7	10
	Thragom PHC		2	6	8
	Tongmizhangsa PHC		4	7	11
	Yangtse Hospital		41	57	63
Trashigang	Bartsham Hospital		8	13	17
	Bidoong PHC		4	4	10
	Bikhar PHC		4	6	10
	Chaling PHC			4	7
	Chhangmi PHC		1	9	15
	Joenkhar Sub-Post		1	4	10
	Kanglung Hospital		15	60	77

Vaccination Services		Family Planning				
DTP-Hep B-Hib	MMR1	Oral Pills (in cycles)	DMPA (injected)	Current IUD user	Tubectomy	Vasectomy
164	58	304	410			
40	20	248	181			
5	2	86	82			
16	7		23			
32	6	162	129			
22	12	75	213			
36	11	31	132			
196	52	324	587			
46	13	63	109			
25	10	16	46	8	7	2
32	6	154	145	31	4	13
19	7	162	99			
42	17	152	107	21	12	11
29	6	55	103	1	13	2
242	72	399	681			

Districts	Facility Name	Trained Deliveries		Vaccination Services	
		Home	Facility	BCG	OPV 3
Trashigang	Kangpar PHC	1	3	12	12
	Khaling Hospital	1	12	19	30
	Lumang PHC			4	7
	Merag PHC	1	6	14	10
	Passaphoog Sub-Post				1
	Phegpari Sub-Post		11	8	9
	Phongmed PHC		5	16	19
	Radi PHC		4	12	14
	Rangjoong Hospital		39	29	27
	Riserboo Hospital	1	37	34	34
	Sagteng PHC	1	4	22	24
	Thongrong Sub-Post			3	5
	Thoongkhar PHC	1		5	13
	Trashigang Hospital		443	141	75
Tsangpo Hospital		14	22	17	

Vaccination Services		Family Planning				
DTP-Hep B-Hib	MMR1	Oral Pills (in cycles)	DMPA (injected)	Current IUD user	Tubecto- my	Vasecto- my
29	5	73	170	37		51
99	23	64	281	19	14	10
16	7	5	127	21	5	3
32	13	133	233	45	6	10
3			33			
36	6	50	95	5	15	3
61	18	247	95	1	6	
35	20	271	350	78	25	7
100	32	276	263	13	17	27
104	42	234	439	7	8	12
73	25	348	265	3	1	4
11	5	1	62			
35	13	95	150			
221	73	175	472	60	50	10
62	14	84	213			

Districts	Facility Name	Trained Deliveries		Vaccination Services	
		Home	Facility	BCG	OPV 3
Trashigang	Udzorong PHC		4	20	29
	Yabrang PHC			7	6
	Yangnyer PHC		8	19	19
Trongsa	Bemji PHC		2	7	8
	Dangdung Hospital		14	23	45
	Jangbi PHC			1	4
	Kella Sub-Post	3		2	5
	Korphoog PHC				5
	Kuengarabten PHC		9	15	34
	Nabji Sub-Post				1
	Nimshong Sub-Post			1	6
	Taktse PHC				
	Trashiling PHC			3	28
Trongsa Hospital	2	31	46	64	
Tsirang	Barshong PHC		2	3	7

Vaccination Services		Family Planning				
DTP-Hep B-Hib	MMR1	Oral Pills (in cycles)	DMPA (injected)	Current IUD user	Tubectomy	Vasectomy
86	20	329	587	12	16	2
19	10	114	60	13	13	7
71	23	90	239	40	32	32
26	15	37	67			
118	65	223	259			
10	3	71	98			
13	3	37	75			
12	5	157	31			
103	42	87	356			
6	3	16	58			
19	4	21	89			
		3	6			
81	37	358	203			
180	64	118	282			
19	13	109	141	1	12	22

Districts	Facility Name	Trained Deliveries		Vaccination Services	
		Home	Facility	BCG	OPV 3
Tsirang	Damphu Hospital		143	120	158
	Doonglagang PHC		7	13	19
	Mendrelgang PHC		7	10	20
	Patshaling Sub-Post			7	8
	Pungtenchhu PHC		13	17	19
	Semjong PHC		3	5	17
	Sergithang PHC		1	6	17
	Tsirang Toed Hospital		8	9	12
Wangdue	Bjemithangkha PHC			22	41
	Dangchhu PHC	2	2	5	9
	Esa Hospital		22	36	60
	Gangteng Sub-Post			2	12
	Gaselo PHC		1	8	18
	Habesa Sub-post				5
	Jala Ula PHC		1	4	18

Vaccination Services		Family Planning				
DTP-Hep B-Hib	MMR1	Oral Pills (in cycles)	DMPA (injected)	Current IUD user	Tubectomy	Vasectomy
517	153	1434	1400			
69	23	213	246			
67	32	278	303			
25	5	127	122			
60	22	195	280	2	7	13
53	15	256	336			
56	11	278	237			
44	13	80	228	4	6	
110	25	286	114	5	8	13
28	7	127	101			
180	61	271	465	5	165	191
32	13	87	69	1	27	32
58	14	32	128		5	
7	8	19	32			
56	20	68	92	7	34	46

Districts	Facility Name	Trained Deliveries		Vaccination Services	
		Home	Facility	BCG	OPV 3
Wangdue	Kamichhu PHC		15	30	44
	Kazhi PHC		1	5	13
	Khotokha Sub-Post			1	13
	Lopokha Sub-Post				
	Migtana Sub-Post			1	10
	Nahi Sub-Post				2
	Nobding Sub-Post		2	7	14
	Saephoog PHC		2	8	28
	Samtengang PHC		2	18	19
	Taksha Sub-Post		1		6
	Teki Agona PHC		11	11	18
	Uma PHC		1		4
	Wangdue Hospital		473	284	252
	Wangdue RBA Hospital			23	39
Zhemgang	Bjoka PHC	1		2	6

Vaccination Services		Family Planning				
DTP-Hep B-Hib	MMR1	Oral Pills (in cycles)	DMPA (injected)	Current IUD user	Tubectomy	Vasectomy
153	39	164	157	6	7	32
37	19	120	137	28	18	22
38	11	54	104	4	9	12
		60	2	4		10
26	2	80	123			
5	1	39	43			
40	18	139	149		1	1
83	26	504	293	2	5	2
55	30	91	207		19	28
12	7	17	60	28		
55	10	99	147	1	24	46
10	3	3	30			
764	247	1106	956	57	333	76
98	49	308	299			
12	4	159	256	10	4	4

Districts	Facility Name	Trained Deliveries		Vaccination Services	
		Home	Facility	BCG	OPV 3
Zhemgang	Buli Hospital		7	3	17
	Duenmang Sub-Post				1
	Gongphu PHC		4	2	8
	Goshing PHC	1	5	6	11
	Kagtong PHC				2
	Khomshar PHC	2	8	7	17
	Kradijong PHC				6
	Langdorbi PHC			2	5
	Manas PHC				
	Namregang PHC		1	1	2
	Nimshong Sub-Post			1	6
	Panbang Hospital		28	16	44
	Pantang PHC		2	1	14
	Shingkhar PHC			1	9
Tashibi Sub-Post			5	3	

Vaccination Services		Family Planning				
DTP-Hep B-Hib	MMR1	Oral Pills (in cycles)	DMPA (injected)	Current IUD user	Tubectomy	Vasectomy
46	10	124	156			
3	1	18	66		2	2
16	7	72	56			2
33	9	228	213			
12	3	46	127		4	
51	13	70	238			
13	2	25	47	6		
12	6	17	155		5	3
1		15	10			
6	4	56	87			
14	5	18	27	4	4	
119	36	217	267	20		17
30	9	98	233	1		
28	9	82	193		17	8
13	1	61	98	2		

Districts	Facility Name	Trained Deliveries		Vaccination Services	
		Home	Facility	BCG	OPV 3
Zhemgang	Tshaidang PHC			3	2
	Yebilaptsa Hospital		23	16	41
	Zhemgang Hospital	1	11	13	30

Vaccination Services		Family Planning				
DTP-Hep B-Hib	MMR1	Oral Pills (in cycles)	DMPA (injected)	Current IUD user	Tubectomy	Vasectomy
7	2	46	114		1	2
128	35	102	233	1		1
91	30	115	248	56	32	24

Table 3.6: Nutritional and vitamin A status of children attending clinics

Dzongkhag	No of children 6 months old (child attendance)		Children exclusively breast-fed for 6 months	No of children 0-11 months old		No of children 12-59 months old	
	New	Old		New	Old	New	Old
Bumthang	151	87	945	190	2489	13	3309
Chhukha	520	777	1550	1420	6879	1000	9260
Dagana	126	397	558	217	2574	246	3934
Gasa	17	35	99	26	351	9	607
Haa	65	430	553	53	941	121	1414
Lhuentse	55	104	155	90	1317	65	2352
Monggar	233	290	1445	327	4975	8	7087
Paro	3	751	816	697	8203	42	9823
Pemagatshel	127	128	357	128	2441	21	4182
Punakha	74	357	362	572	2718	434	3374
Samdrup Jongkhar	196	414	549	312	3664	80	6820
Samtse	267	872	1689	745	6788	180	10834
Sarpang	362	347	536	821	5544	109	8953
Thimphu	1698	1797	3230	1977	22188	2722	22974
Trashigang	42	177	850	168	2113	21	3850
Trongsa	96	194	291	35	1833	2	2857
Tsirang	98	325	346	112	2603		4458
Wangdue	155	1048	866	526	4766	305	5569
Zhemgang	79	264	305	124	1468	43	2439
	4471	9196	16289	8985	88211	5636	120681

Vitamin A Supplementation/ Deworming				
Children normal (lt/ht for age)	Children 6-11 months given Vitamin A	Children 12-59 months given Vitamin A	Post-partum mothers given Vitamin A	Children 12-59 months given Deworming
6044	266	1639	178	1430
18981	1140	4879	706	4351
7083	398	1857	149	1632
983	46	288	6	281
3096	192	681	65	574
3906	183	917	37	762
12136	505	3421	570	2999
18300	782	4625	609	4052
6809	258	1941	100	1702
7761	453	1553	35	1374
10664	447	4048	313	2961
19028	792	5236	474	4816
15252	716	4377	742	4040
45132	2646	12664	3430	10860
6173	239	1638	161	1499
11042	488	2948	239	2711
4962	174	1408	84	1173
7290	320	1936	94	1755
11185	663	2762	298	2478
3977	188	1181	80	990
219804	10896	59999	8370	52440

SECTION 4: PREVENTIVE AND CURATIVE CARE SERVICES

Table 4.1: Total cases of notifiable diseases reported in 2022

	Age Group			
	0-29 Days	1-11 Months	1-4 Years	5-9 Years
Acute Bloody Diarrhea	12	111	354	274
Acute Watery Diarrhea	36	1410	5674	3922
Acute Jaundice syndrome	0	0	0	65
Acute Respiratory Infection	368	8663	27575	23747
Mumps	0	0	46	43
Fever with Rash	0	22	98	116
Food Borne Illness	0	17	66	21
Typhoid/ Paratyphoid fever	0	2	9	47
Severe Acute Respiratory Infection	18	183	503	228
Rickettsioses	1	2	5	4
Anthrax	0	0	0	0
Acute Flacid Paralysis	0	0	1	0
Acute Hemorrhagic Fever	0	0	0	0
Avian Influenza	0	0	0	0
Bacterial Meningitis	0	7	2	0
Cholera	0	0	0	0
Malaria	0	0	0	0
Suspected measles	0	7	17	4
Pertusis	0	10	3	0
Conginental Rubella Syndrome	0	0	0	0
Rubella	0	0	0	0
Dengue Hemorrhagic Fever	0	0	3	0
Tetanus	0	0	0	0
Deptheria	0	0	0	0
Acute Encephalitis	0	7	1	1
Unknown Disease	0	0	0	0
Dengue Fever	0	1	1	20

Age Group						
10-14 Years	15-19 Years	20-24 Years	25-49 Years	50-64 Years	65+ Years	Total
184	140	105	455	186	193	2014
2155	1456	1058	4005	1459	1386	22561
50	39	31	267	80	55	587
13743	10144	8016	36475	12945	7959	149635
21	26	27	52	17	10	242
59	48	53	88	7	10	501
33	21	22	53	9	6	248
43	27	32	90	24	10	284
115	51	39	181	141	154	1613
6	3	9	49	22	13	114
0	0	0	0	0	0	0
1	0	0	0	0	0	2
0	0	1	0	0	0	1
0	0	0	0	0	0	0
0	0	0	0	0	0	9
0	0	0	0	0	0	0
0	2	1	1	3	0	7
3	0	0	4	0	0	35
0	0	0	0	0	0	13
0	0	0	0	0	0	0
0	0	0	0	0	0	0
0	3	2	28	8	0	44
0	0	0	0	0	0	0
0	0	0	0	0	0	0
1	0	0	0	0	0	10
0	0	0	0	0	0	0
5	2	8	59	19	8	123

Table 4.2: Cases Notification of Tuberculosis in 2022

	TB cases Classifications	Age Group					
		0-4		5-14		15-24	
		M	F	M	F	M	F
Pulmonary Bacteriologically Confirmed	New	0	2	3	3	64	85
	Relapse	0	0	0	1	4	2
	Previously treated (excluding relapse)	0	0	0	0	5	1
	Previously treated history unknown	0	0	0	0	0	0
Pulmonary Clinically Diagnosed	New	0	0	0	2	10	3
	Relapse	0	0	0	0	0	1
	Previously treated (excluding relapse)	0	0	0	0	0	0
	Previously treated history unknown	0	0	0	0	0	0
ExtraPulmonary Bacteriologically Confirmed and clinically Diagnosed	New	2	1	4	12	30	38
	Relapse	0	0	0	2	1	4
	Previously treated (excluding relapse)	0	0	0	0	0	1
	Previously treated history unknown	0	0	0	0	0	0
Total		2	3	7	20	114	135

Age Group										
25-34		35-44		45-54		55-64		65+		Total
M	F	M	F	M	F	M	F	M	F	
55	61	31	19	23	6	12	3	25	13	405
3	6	3	2	4	3	1	1	2	2	34
1	0	2	0	1	0	0	0	0	1	11
0	0	0	0	0	0	0	0	0	0	0
3	4	7	4	4	2	2	3	6	1	51
0	1	0	0	0	0	1	0	0	0	3
0	0	0	0	0	0	0	0	0	0	0
0	0	0	0	0	0	0	0	0	0	0
35	52	13	21	17	12	15	10	10	11	283
3	2	1	0	1	1	1	0	2	0	18
0	0	0	1	0	0	1	0	0	1	4
0	0	0	0	0	0	0	0	0	0	0
100	126	57	47	50	24	33	17	45	29	809

Table 4.3: Leprosy

IL PATIENTS (MDT) - 2021	MB 0-14 yrs		PB 0-14 yrs		MB 15-29 yrs		PB 15-29 yrs		MB 30-44 yrs		PB 30-44 yrs		MB 45-59 yrs		PB 45-59 yrs		MB 60+ yrs		PB 60+ yrs		Total Cases
	M	F	M	F	M	F	M	F	M	F	M	F	M	F	M	F	M	F	M	F	
Total at end of last Quarter			1	2			1	1			0	1			3	0					9
+ New patients detected			2	1			2	1			0	2			2	0					10
+ Transfer in etc.																					0
+ Relapse																					0
+ Regained to control																					0
- Released (RFT)	1	0	4	0			3	2			0	1			2	1					14
- Died																					0
- Lost to control																					0
- Transferred out																					0
- Defaulter																					0
Total at end of the quarter/ Annual			2	1			2	1			0	2			2	0					10

Table 4.4: Malaria

	<1 year		4-Jan		9-May		14-Oct		15-19		20-24		25-49		50-59		60+		Total	
	M	F	M	F	M	F	M	F	M	F	M	F	M	F	M	F	M	F		
	Mix	0	0	0	0	0	0	0	0	0	0	0	0	0	0	0	0	0		0
Imported	0	0	0	0	0	0	0	0	1	0	0	0	0	0	0	0	0	0	0	1
PV	0	0	0	0	0	0	0	0	0	0	0	0	1	0	0	0	0	1	0	2
Mix	0	0	0	0	0	0	0	0	0	0	0	0	0	0	0	0	0	0	0	0
Indigenous	0	0	0	0	0	0	0	0	0	0	0	0	0	0	0	0	0	0	0	0
PV	0	0	0	0	0	0	0	0	0	0	0	0	0	0	0	0	0	0	0	0
Mix	0	0	0	0	0	0	0	0	0	0	0	0	0	0	0	0	0	0	0	0
Introduced	0	0	0	0	0	0	0	0	0	0	0	0	0	0	0	0	0	0	0	0
PV	0	0	0	0	0	0	0	0	0	0	1	0	0	0	0	2	0	0	0	3
Total	0	0	0	0	0	0	0	0	1	1	1	0	1	0	2	0	1	0	1	6
PF- Plasmodium falciparum malaria																				
PV- Plasmodium vivax malaria																				

Table 4.5: HIV/VCT services provided by facilities, 2022PART 1: DISTRIBUTION BY REASON FOR T & C
CLIENTS PRETEST COUNCELED

Particulars	0-29 Days		1-11 Months		1-4 Years		5-9 Years		10-14 Years	
	M	F	M	F	M	F	M	F	M	F
Voluntary/Self referred	6	2		1	4	1	20	21	18	23
STI patient							1	1		1
TB patient			1				1	2	3	3
HIV/AIDS related symptoms					1			1		
Pregnancy/ANC										2
Operation/Surgery					1	1	4	4	1	2
Blood donor screening										
Contact tracing		1		1	3	4	6	3	4	6
Others			1	1	5	6	5	4	6	16
PART 2: DISTRIBUTION BY REASON FOR T&C										
CLIENTS HIV TESTED:										
Voluntary/Self referred	6	2		1	4	1	20	21	19	23
STI patient					8		1	1		1
TB patient			1				1	2	3	2
HIV/AIDS related symptoms						1		1		
Pregnancy/ANC										11
Operation/Surgery					1	1	4	4	1	2
Blood donor screening										
Contact tracing		1		1	3	4	5	3	5	5
Others			1	1	5	7	4	4	6	17
PART 2: DISTRIBUTION BY REASON FOR T&C										
CLIENTS HIV POSITIVE:										
Voluntary/Self referred							3	4		
STI patient										

15-19 Years		20-24 Years		25-49 Years		50-59 Years		60+ Years	
M	F	M	F	M	F	M	F	M	F
165	190	941	923	4406	4629	915	889	791	818
9	10	61	45	248	237	36	39	44	47
43	45	37	38	83	62	29	15	34	15
	1		7	3	21	1		1	
	388		3006		11199		3		
5	2	9	15	311	255	115	126	132	117
58	6	240	36	1018	166	31	3	1	
3	7	11	14	87	125	48	44	43	32
174	171	397	422	2624	3152	1084	1221	1174	1032
164	189	904	923	4404	4503	889	867	774	806
17	14	59	44	234	224	36	40	44	48
43	43	31	39	82	65	28	16	33	15
	2		7	3	24	1			
	384		3002		10884		36		
1	3	8	15	331	280	112	136	137	124
119	45	362	104	1197	245	42	4	1	
3	7	9	11	41	41	12	4	4	
295	301	997	1069	3848	4398	1283	1401	1346	1221
4	4	5	8	41	34	6	5		1
		1	1	8	2		1		

Particulars	0-29 Days		1-11 Months		1-4 Years		5-9 Years		10-14 Years	
	M	F	M	F	M	F	M	F	M	F
TB patient										
HIV/AIDS related symptoms										
Pregnancy/ANC										
Operation/Surgery										
Blood donor screening										
Contact tracing					2					
Others										1
PART 2: DISTRIBUTION BY REASON FOR T&C										
CLIENTS POST-TEST COUNSELLED:										
Voluntary/Self referred	1	1			2	1	15	13	13	10
STI patient							1	1		1
TB patient								1		1
HIV/AIDS related symptoms										
Pregnancy/ANC										1
Operation/Surgery					1		3	1	1	4
Blood donor screening										
Contact tracing				1	3	3	4	1	3	4
Others					2	6	2	3	5	10
PART 3: DISTRIBUTION BY RISK ASSESSMENT										
CLIENTS PRETEST COUNSELLED:										
Sex workers										
Injecting drug users										
MSM-TG										
Clients of sex workers										
Multiple partner /Unprotected sex										
Mobile/migrant workers										
Others					5	7	10	9	4	12

15-19 Years		20-24 Years		25-49 Years		50-59 Years		60+ Years	
M	F	M	F	M	F	M	F	M	F
1		2		2	1				
				2	2				
	19		90		335		10		
		14		18	1	1			
				4	2		1		
		3	1	25	15	4	5	3	2
112	115	696	658	3247	2972	595	554	504	452
7	3	44	31	157	143	32	34	40	46
8	6	5	6	24	10	7	3	12	1
			1	4	4				
	254		2130		8000		278		
1	1	7	10	231	192	111	103	94	86
25	6	127	18	506	68	20	1		
1	4	5	8	35	33	11	4	3	
145	145	352	313	2050	2303	720	809	773	636
		5	5	6	14	3			
1	1		1	4	1				
		2	2	5	5				
17	26	212	205	1153	1112	188	154	106	81
			2	7	6				
220	310	963	1942	3436	8016	802	756	740	723

Particulars	0-29 Days		1-11 Months		1-4 Years		5-9 Years		10-14 Years	
	M	F	M	F	M	F	M	F	M	F
PART 3: DISTRIBUTION BY RISK ASSESSMENT										
CLIENTS HIV TESTED:										
Sex workers										
Injecting drug users										
MSM-TG										
Clients of sex workers										
Multiple partner /Unprotected sex										
Mobile/migrant workers										
Others				2	4	8	7	9	4	12
PART 3: DISTRIBUTION BY RISK ASSESSMENT										
CLIENTS HIV POSITIVE:										
Sex workers										
Injecting drug users										
MSM-TG										
Clients of sex workers										
Multiple partner /Unprotected sex										
Mobile/migrant workers										
Others					1					
PART 3: DISTRIBUTION BY RISK ASSESSMENT										
CLIENTS POST-TEST COUNSELLED:										
Sex workers										
Injecting drug users										
MSM-TG										
Clients of sex workers										
Multiple partner /Unprotected sex										
Mobile/migrant workers										
Others				2	4	8	7	9	4	12

15-19 Years		20-24 Years		25-49 Years		50-59 Years		60+ Years	
M	F	M	F	M	F	M	F	M	F
			4	3	11				
1	1		1	4	1				
17	26	213	207	1154	1113	188	154	106	81
3	2	18	15	67	48	8	5	21	4
374	448	1528	2541	4814	8897	862	815	760	768
				6	4	1	1	1	
4	3	18	11	200	271	119	99	99	59
		5	5	3	12	2			
1	1		1	4	1				
17	26	214	207	1156	1117	188	154	21	11
			2	10	7				
212	293	845	1735	3361	7061	709	639	692	601

SECTION 5: NON-COMMUNICABLE DISEASES

Table 5.1: Non-Communicable Disease, 2022

Age group	0-29 days		1-11 months		1-4 years		5-9 years	
	M	F	M	F	M	F	M	F
Other Diseases of the Digestive System	79	90	698	759	3052	2851	3468	3972
Other Musculo-skeletal Disorders	3	5	54	27	301	315	803	726
Peptic Ulcer Syndrome	3	2	15	20	142	181	441	538
Dental Caries					1015	1158	3009	3087
Other Kidney, UT/Genital Disorders	8	6	28	47	252	288	375	497
Diseases of Teeth & Gums	2	1	56	59	1002	1026	2380	2412
Hypertension							13	4
Nutritional Anaemia		1	6	11	67	54	87	101
Arthritis & Arthrosis			3	1	17	13	39	47
Other Circulatory Diseases	9		26	25	69	41	49	59
Diabetes					1	4	2	1
Conditions Originating in Perinatal Period	1510	1354						
Other Nutritional & Metabolic Disorders	7	5	54	74	135	147	108	168
Alcohol Liver Diseases								
Cystitis			4	3	5	9	10	22
Other Mental Disorders			3	1	42	29	23	22
Anxiety				1		1	3	6
Mental & behavioral disorders due to alcohol							1	4
Blood & Immune Disorders		1	11	6	20	14	16	14
	1621	1465	958	1034	6120	6131	10827	11680

10-14 years		15-19 years		20-24 years		25-49 years		50-59 years		60+ years	
M	F	M	F	M	F	M	F	M	F	M	F
3686	4398	3728	4174	3197	3882	12532	16973	3916	4371	5632	6047
1664	1499	2684	2360	3420	3106	17091	18808	6193	6556	8482	8111
908	1206	1898	2036	2209	2493	8116	10221	2812	3252	3040	3450
1773	2010	1822	2474	1921	2455	5596	7712	1995	2012	2505	2224
372	645	465	1208	782	2334	3370	12014	5601	2051	1640	1954
1417	1570	1438	1646	1429	1673	3824	4880	1466	1565	1990	1739
5	8	26	52	104	158	4144	5228	3331	3533	4529	4635
136	306	240	682	227	705	655	2605	294	607	537	699
100	100	181	178	237	265	1499	1416	809	833	1188	1095
58	109	98	111	116	156	837	1193	238	329	558	640
4	3	5	8	13	22	1631	2139	1957	2229	2277	2077
163	290	220	269	126	183	571	877	205	254	308	348
	2	2	7	31	36	787	506	327	242	253	194
7	14	18	31	19	93	108	467	31	72	35	59
22	60	86	102	101	101	351	505	101	116	108	117
38	80	129	268	189	282	671	1087	170	229	126	161
3	3	18	14	70	44	1198	382	175	105	84	56
21	27	27	47	10	51	101	246	47	66	77	90
10377	12330	13085	15667	14201	18039	63082	87259	29668	28422	33369	33696

SECTION 6: SERVICE CAPACITY AND ACCESS

Table 6.1: Health facilities by Districts

Dzongkhag	Hospital	Primary Health Center (PHC)	Sub-post	No. of ORCS		
				With shed	Without shed	Total
Bumthang	*Wangdicholing Hospital			0	0	0
		Choekhor Toe PHC		1	0	1
		Chumey PHC		3	0	3
		Dhur PHC		0	0	0
		Tang PHC		4	0	4
		Ura PHC		3	0	3
Total	1	5	0	11	0	11
Chhukha	*Phuntsholing Hospital			4	0	4
	Gedu Hospital			2	0	2
	Tsimalakha Hospital			3	0	3
	Chhukha Hospital			2	1	3
	Khatoekha Hospital			1	0	1
	Phuntsholing THC (under construction)	Arikha PHC		0	0	0
		Bongo PHC		1	3	4
		Chapcha PHC		3	0	3
		Chongeykha PHC		3	1	4
		Darla PHC		0	1	1
		Doogna PHC		2	0	2
		Getana PHC		2	0	2
		Lokchina PHC		2	0	2
		Metakha PHC		2	1	3
		Rangaytung PHC		2	0	2
		Rinchentsey PHC		0	0	0
	Sinchula PHC		4	1	5	
	Trashigatshel MI		0	0	0	

Dzongkhag	Hospital	Primary Health Center (PHC)	Sub-post	No. of ORCS		
				With shed	Without shed	Total
Chhukha			Baikunza Sub-post	0	0	0
			Chimuna Sub-post	0	0	0
Total	5	13	2	33	8	41
Dagana	Dagapela Hospital			8	0	8
	Daga Hospital			3	0	3
	Lhamizingkhar Hospital			5	0	5
		Akochen PHC		1	2	3
		Bjurugang PHC		1	0	1
		Drukjeygang PHC		3	0	3
		Khagochen PHC		1	0	1
		Lajab PHC		4	0	4
		Nimtola PHC		1	2	3
	Tsangkha PHC		3	0	3	
Total	3	7	0	30	4	34
Gasa	Gasa Hospital			0	0	0
		Damji PHC		2	0	2
		Laya PHC		1	0	1
		Lunana PHC		1	1	2
Total	1	3	0	4	1	5
Haa	Haa Hospital			3	2	5
		Dorithasa PHC		0	1	1
		Ngatsena PHC		1	2	3
		Sangbaykha PHC		1	1	2
		Yangthang PHC		1	1	2
			Bebji Sub post	1	1	2
		Sabjithang Sub post	1	1	2	
Total	1	4	2	8	9	17

Dzongkhag	Hospital	Primary Health Center (PHC)	Sub-post	No. of ORCS		
				With shed	Without shed	Total
Lhuentse	Lhuentse Hospital			0	0	0
		Authso PHC to 10 bedded hospital (Under construction)		2	0	2
		Dangling PHC		2	0	2
		Dungkar PHC		2	1	3
		Ganglakhema PHC		1	0	1
		Gortsum PHC		2	0	2
		Khoma PHC		4	0	4
		Ladrong PHC		3	0	3
		Minjey PHC		3	1	4
		Ney PHC		1	0	1
		Patpachu PHC		3	0	3
		Tagmochu PHC		0	2	2
		Thimyul PHC		2	0	2
		Tsaenkhar PHC		2	0	2
	Zangkhar PHC		1	0	1	
Total	1	14	0	28	4	32
Mongar	ERR Hospital			3	0	3
	Gyalpoizhing Hospital			2	0	2
		Baanjar PHC		0	0	0
		Balam PHC		3	0	3
		Boompazar PHC		3	0	3
		Chagsskhar PHC		4	0	4
		Chhaling PHC		1	0	1
		Daagsa PHC		1	1	2
		Drametse (10)		3	0	3
		Ganglapong PHC		0	1	1
		Jurmed PHC		3	0	3
	Kengkhar PHC		3	0	3	

Dzongkhag	Hospital	Primary Health Center (PHC)	Sub-post	No. of ORCS		
				With shed	Without shed	Total
Mongar		Lingmethang PHC		3	1	4
		Muhoong PHC		2	0	2
		Nagor PHC		2	0	2
		Narang PHC		3	0	3
		Ngatshang PHC		1	0	1
		Sengor PHC		0	0	0
		Serzhong PHC		2	0	2
		Thang-Rong PHC		4	0	4
		Tsakaling PHC		3	0	3
		Tsamang PHC		1	1	2
		Yadi PHC		1	0	1
		Yangbari PHC		2	0	2
			Pangthang Sub-post	0	1	1
			Resa Sub-post	0	0	0
			Silambi Sub-post	2	0	2
			Takambi Sub-post	0	0	0
			Tongla Sub-post	1	0	1
Total	2	22	5	53	5	58
Paro	Paro Hospital			8	0	8
	Pangbesa			0	0	0
		Bueltikha PHC		5	0	5
		Dawakha PHC		3	1	4
		Drugyal PHC		2	0	2
			Gunitsawa Sub-post	1	1	2
			Intl Airport Health Post	0	0	0
Total	2	3	2	19	2	21

Dzongkhag	Hospital	Primary Health Center (PHC)	Sub-post	No. of ORCS		
				With shed	Without shed	Total
Pemagatshel	Pemagatshel Hospital			6	1	7
	Nganglam Hospital			2	1	3
		Chhimoong PHC		1	0	1
		Chhoekhorling PHC		0	1	1
		Dechhenling PHC		2	0	2
		Dungmaed PHC		1	0	1
		Gonpasingma PHC		3	1	4
		Nanong PHC		4	0	4
		Norboogang PHC		1	1	2
		Tsebar PHC		3	0	3
		Thrumchung PHC		1	0	1
		Tsatse PHC		3	0	3
		Yurung PHC		1	0	1
			Borangma Sub-post	1	0	1
			Chongshing Sub-post	1	0	1
			Khangma Sub-post	0	0	0
			Mikuri Sub-post	1	0	1
			Nyaskhar Sub-post	0	0	0
			Sali Sub-post	0	0	0
			Thongsa Sub-post	0	0	0
Total	2	11	7	31	5	36

Dzongkhag	Hospital	Primary Health Center (PHC)	Sub-post	No. of ORCS		
				With shed	Without shed	Total
Punakha	Punakha Hospital			1	0	1
		Goenshari PHC		1	0	1
		Kabisa PHC		3	0	3
		Nobgang PHC		1	0	1
		Samdingkha PHC		3	0	3
		Shelgana PHC		0	0	0
		Thinleygang PHC		1	0	1
		Tshochasa PHC		0	0	0
			Lobesa Sub-post	0	0	0
Total	1	7	1	10	0	10
S/jongkhar	*Deothang Hospital			0	0	0
	Samdrupjongkhar Hospital			2	0	2
	Gomdar Hospital			3	0	3
	Jomotsangkha Hospital			1	0	1
	Samdrupcholing Hospital			4	2	6
		Lauri PHC		2	0	2
		Martshalla PHC		3	1	4
		Menjiwoong PHC		2	0	2
		Orong PHC		1	1	2
		Pemathang PHC		2	0	2
		Wangphu PHC		4	0	4
		Zangthi PHC		0	1	1
				Samrang Sub-post	0	0
			Sarjung Sub-post	1	0	1
			Wooling Sub-post	0	0	0
Total	5	7	3	25	5	30

Dzongkhag	Hospital	Primary Health Center (PHC)	Sub-post	No. of ORCS			
				With shed	Without shed	Total	
Samtse	*Samtse Hospital			2	0	2	
	Gomtu Hospital			4	0	4	
	Dorokha Hospital			6	0	6	
	Tashichholing Hospital			2	1	3	
		Doongtoed PHC			3	0	3
		Duenchukha PHC			1	0	1
		Gangthog PHC			2	1	3
		Norbugang PHC			2	0	2
		Norgaygang PHC			2	0	2
		Panbari PHC			2	2	4
		Pemaling PHC			2	0	2
		Sangacholing PHC			4	0	4
		Sengdhen PHC			4	0	4
		Tendruk PHC			3	1	4
		Ugyentse PHC			2	0	2
		Yoelseltse PHC			2	0	2
				Bukay Sub-post	0	0	0
				Gashingma Sub-post	0	0	0
				Gawaling Sub-post	0	0	0
				Phendheygang Sub-post	0	1	1
			Tading Sub-post	0	1	1	
Total	4	12	5	43	7	50	

Dzongkhag	Hospital	Primary Health Center (PHC)	Sub-post	No. of ORCS			
				With shed	Without shed	Total	
Sarpang	CRR Hospital			1	0	1	
	Sarpang Hospital			1	1	2	
	Chhuzergang Hospital			0	0	0	
		Chokhorling PHC		3	0	3	
		Gakidling PHC		1	0	1	
		Jangchubling PHC		1	0	1	
		Jigmechholing PHC		1	0	1	
		Jigmeling PHC (RBP)		0	0	0	
		Lhayul PHC		1	0	1	
		Menchulam PHC		0	0	0	
		Norbuling PHC		2	0	2	
		Sengay PHC		0	0	0	
		Tarraythang PHC		0	0	0	
	Umling PHC		1	0	1		
			Phibsoo Sub-post	0	0	0	
Total	3	11	1	12	1	13	
Thimphu	JDWNR Hospital			0	8	8	
	NTMH			0	0	0	
	Gidakom Hospital			4	0	4	
	Dechhencholing Hospital			0	0	0	
		** Changjiji Thromde Health Centre			0	0	0
	Baybena THC (under construction)	** Baybena Thromde Health Centre			0	0	0
	Motithang THC (under construction)	** Motithang Thromde Health Centre			0	0	0

Dzongkhag	Hospital	Primary Health Center (PHC)	Sub-post	No. of ORCS		
				With shed	Without shed	Total
Thimphu	Simtokha (under construction)	Barshong PHC		0	0	0
	Debsi (under construction)	Chamgang PHC		0	0	0
		Chamgang Jail Health Post		0	0	0
		Genyekha PHC		2	0	2
		Hongtsho PHC		0	0	0
		Kuzhuchen PHC		0	0	0
		Lingzhi PHC		1	1	2
		RBP-HQ Health Post		0	0	0
	Soe PHC		0	0	0	
Total	4	12	0	7	9	16
Trashigang	*Trashigang Hospital			2	0	2
	Riserboo Hospital			2	0	2
	Bartsham Hospital			3	0	3
	Kanglung Hospital			5	1	6
	Khaling Hospital			5	0	5
	Rangjung Hospital			1	0	1
	Tsangpo Hospital			1	0	1
		Bidung PHC		2	0	2
		Bikhar PHC		2	0	2
		Changmi PHC		2	0	2
		Kangpara PHC		5	0	5
		Lumang PHC		2	0	2
		Merak PHC		1	0	1
		Phongmaed PHC		1	0	1
	Radi PHC		4	0	4	
	Sakteng PHC		1	0	1	
	Thoongkhar PHC		2	1	3	

Dzongkhag	Hospital	Primary Health Center (PHC)	Sub-post	No. of ORCS		
				With shed	Without shed	Total
Trashigang		Udzorong PHC		4	0	4
		Yabrang PHC		0	0	0
		Yangnyer PHC		5	1	6
		Joenkhar PHC		0	0	0
			Chaling Sub-post	0	0	0
			Passaphug Sub-post	0	0	0
			Phegpari Sub-post	1	0	1
			Thongrong Sub-post	0	0	0
Total	7	14	4	51	3	54
Trashiyangtse	Trashiyangtse Hospital			2	0	2
	Khamdang Hospital			5	0	5
		Dungzam PHC		2	0	2
		Jamkhar PHC		2	0	2
		Kheni PHC		4	0	4
		Melongkhar PHC		2	0	2
		Ramjar PHC		2	0	2
		Thragom PHC		2	0	2
		Tongmejangsa PHC		3	0	3
			Jangphutse Sub-post	1	0	1
			Rabtey Sub-post	1	0	1
Total	2	7	2	26	0	26
Trongsa	Trongsa Hospital			3	0	3
	Dangdung Hospital			5	0	5
		Bemji PHC		3	0	3
		Jangbi PHC		2	0	2

Dzongkhag	Hospital	Primary Health Center (PHC)	Sub-post	No. of ORCS		
				With shed	Without shed	Total
Trongsa		Kuenga Rabten PHC		3	0	3
		Korphu PHC		0	0	0
		Tashiling PHC		3	0	3
		Taktse PHC		0	0	0
			Kella Sub-post	0	0	0
			Nabji Sub-post	0	0	0
			Nimshong Sub-post	0	0	0
Total	2	5	4	19	0	19
Tsirang	*Damphu Hospital			5	1	6
	Tsirangtoe Hospital			1	0	1
		Barshong PHC		1	0	1
		Dunglagang PHC		1	0	1
		Mendrelgang PHC		3	1	4
		Pungtenchhu PHC		1	0	1
		Semjong PHC		2	0	2
		Sergithang PHC		1	1	2
		Patshaling PHC		2	0	2
Total	2	7	0	17	3	20
Wangdue Phodrang	*Wangdue Hospital			2	2	4
	Eusa Hospital			3	0	3
		Dangchu PHC		1	0	1
		Gaselo PHC		0	0	0
		Jalla PHC		0	3	3
		Bjimthangkha PHC		0	0	0
		Kamichu PHC		2	1	3
		Kashi PHC		2	0	2
		Samtengang PHC		1	1	2
	Sephu PHC		2	0	2	

Dzongkhag	Hospital	Primary Health Center (PHC)	Sub-post	No. of ORCS		
				With shed	Without shed	Total
Wangdue Phodrang		Teki-Agona PHC		2	0	2
		Uma PHC		1	0	1
		Nobding PHC (submitted for upgradation)		1	0	1
		Khotokha PHC (submitted for upgradation)		0	0	0
			Gangtay Sub-post	0		
			Hebesa Sub-post	1	0	1
			Ramachen Sub-post	0	0	0
			Lopokha Sub-post	0	0	0
			Migtana Sub-post	0	0	0
			Nahi Sub-post	0	0	0
			Nobding Sub-post	1	0	1
			Taksha Sub-post	1	0	1
Total	2	12	8	20	7	27
Zhemgang	Yebilaptsa Hospital			5	0	5
	Panbang Hospital			3	1	4
	Zhemgang Hospital			1	0	1
	Buli Hospital			2	1	3
		Bjokha PHC		2	0	2
		Gongphu PHC		1	0	1
		Goshing PHC		4	0	4
		Kaktong PHC		1	1	2
		Khomshar PHC		1	1	2
	Kradijong PHC		0	0	0	

Dzongkhag	Hospital	Primary Health Center (PHC)	Sub-post	No. of ORCS		
				With shed	Without shed	Total
Zhemgang		Langdurbi PHC		1	1	2
		Pantang PHC		2	0	2
		Shingkar PHC		2	0	2
		Tshaidang PHC		2	0	2
			Duenmang Sub-post	1	0	1
			Manas Sub-post	0	0	0
			Namergang Sub-post	0	0	0
			Nimshong Sub-post	1	0	1
			Tashibee Sub-post	0	0	0
Total	4	10	5	29	5	34
Grand Total	54	186	51	476	78	554

Table 6.2: HR status of Health (1st quarter 2023)

General category of Health Workers	Male	Female	Total
General Specialist/ Sub-Specialist	100	39	139
MS/CMO/MO/GDMO	93	56	149
Nurse Anesthetist	27	1	28
OT Technician	35	19	54
Clinical Officer	18	7	25
Health Assistant	334	313	647
Dental Specialist	9	4	13
Dental Surgeon	22	31	53
Dental Hygienist	48	39	87
Dental Technician	32	16	48
EMRO/EMR	36	23	59
Audiologist/ENT Technician	20	18	38
Laboratory Officer	40	15	55
Laboratory Asst./ Technician	161	129	290
Malaria Technician	23	4	27
Optometrist/ Ophthalmic Tech.	43	24	67
Ortho Technologist/ Ortho Tech.	19	7	26
Pharmacist	31	14	45
Pharmacy Technician	95	99	194
Occupational/ Physiotherapist	14	22	36
Physiotherapy Technician	49	30	79
Radio Technologist/ Medical Physicist	6	8	14
Radio Techn. (X-ray, USG, MRI, CT)	98	29	127
Dietician/Nurtitionist	13	10	23
Clinical Counselor	6	10	16
Clinical Nurse	87	168	255
Staff/Asst. Nurse	551	699	1250
Drungtsho	57	22	79
Menpa/Therapy Aide	104	71	175
DHO/ADHO	26	6	32
Administration & Management	531	357	888
ESP/GSP	527	561	1088
Total	3255	2851	6106

Table 6.3: Selected Dental services provided by health facilities, 2022

Dzongkhag	Dental Services				
	Prophylaxis	Scaling	Fillings	Extractions	Others
Bumthang		139	1311	1817	2097
Chhukha	380	410	3855	3689	7456
Dagana	610	144	1972	1616	1531
Gasa	85	83	236	201	192
Haa	145	20	907	1470	1902
Lhuentse	30	3	197	641	461
Monggar	383	70	2740	3338	3878
Paro	335	161	5861	4532	3965
Pemagatshel	55	52	1559	944	1591
Punakha	251	141	3171	1292	2474
Samdrup Jongkhar	1403	198	2318	2099	2191
Samtse	190	197	2221	3398	4486
Sarpang	377	249	3649	4130	6943
Thimphu	3427	361	15145	39461	4134
Trashigang	201	128	822	721	1820
Trashigang	952	465	4199	3712	4925
Trongsa	275	229	1029	1164	965
Tsirang	107	77	1442	2206	2855
Wangdue	262	98	1401	2963	3829
Zhemgang	713	175	860	924	703
	10181	3400	54895	80318	58398

Table 6.4: Laboratory tests, 2022

Dzongkhag	Haemoglobin	Blood group	Malaria slides	TB sputum	Urine
Bumthang	1541	334	8	62	2643
Chhukha	30298	4215	2318	6098	15912
Dagana	4006	1061	300	253	5501
Gasa	445	63		5	323
Haa	2687	337		186	5085
Lhuentse	2057	481		199	2751
Monggar	18969	4308	23	1535	10528
Paro	18968	2092	260	1206	16969
Pemagatshel	3417	1041	428	428	6095
Punakha	6623	1086	4	492	4525
Samdrup Jongkhar	12254	1381	1168	912	9031
Samtse	20932	5391	2552	1230	10385
Sarpang	29599	5460	8589	3781	41466
Thimphu	138922	105880	5054	10877	68827
Trashigang	5741	855	19	231	4471
Trashigang	14108	3119	78	825	19063
Trongsa	3064	668	41	173	4722
Tsirang	7088	1147	259	465	10015
Wangdue	14653	966	128	616	6430
Zhemgang	3444	461	265	118	3175
Total	338816	140346	21494	29692	247917

Stool	HIV	Lab examinations /tests: Total	Pap smear collected: BHUs/Hospitals w/ out Cyto-Techn.	Pap smear examined: Hospitals with Cyto-Techn.
1003	1317	11950	1788	456
2398	6213	806870	1341	
4775	2082	42586	386	
194	303	1188	278	69
428	689	23876	74	29
561	1227	38364	781	
2378	7987	41979	2513	23945
1156	3291	245572	1037	
6624	2907	45321	1915	3
255	3695	16859	128	
1242	3690	192272	1290	
4888	8934	304014	853	1
1282	10351	393559	1138	33783
7315	41678	2354915	11478	17773
5016	1528	90119	2810	
5991	5505	162672	1991	7311
2195	2689	64404	579	
183	2981	96846	196	194
5034	6172	192373	2440	209
2635	1479	38122	749	65
55553	114718	5163861	33765	83838

Table 6.5: Surgeries conducted by health facilities, 2022

Dzongkhag	Caesarian Section		General		Orthopaedic		Gynaecology	ENT	Eye
	Section	Abdominal	Others	Extremities	Others				
Bumthang	0	0	0	0	0	0			
Chhukha	200	37	902	236	137	165	11	62	
Dagana	0	0	0	0	0	0	0	0	
Gasa	0	0	0	0	0	0	0	0	
Haa	0	0	0	0	0	0	0	0	
Lhuentse	0	0	0	0	0	0	0	0	
Monggar	132	207	401	540		216	170	34	
Paro	0	0	0	0	0	0	0	0	
Pemagatshel	0	0	0	0	0	0	0	66	
Punakha	0	0	0	0	0	0	0	0	
Samdrup Jongkhar	48	163	1176	222	29	1073	1247		
Samtse	135	29	169	727	287	124		1363	
Sarpang	233	422	275	151	21	123	48	288	
Thimphu	1263	1394	860	782	227	976	766	2503	
Trashi Yangtse	0	0	0	0	0	0	0	0	
Trashigang	133	73	80	0	0	116	15	178	
Trongsa	0	0	0	0	0	0	0	0	
Tsirang	33	36	106	24		29			
Wangdue	160	73	342	93	65	303	96	166	
Zhemgang	0	0	0	0	0	0	0	0	
Total	2337	2434	4311	2775	766	3125	2353	4660	

Table 6.6: Selected diagnostic service

Dzongkhag	X-Ray:			Ultrasound:			Computed Tomography-CT	Endoscopy	Magnetic Resonance Imaging-MRI
	Chest	Extremities	Others	Gynaecology/Obs	Abdomen	Others			
Bumthang	573	555	197	1241	1476	282			
Chhukha	3252	3767	1320	6525	6795	3286			
Dagana	451	654	267	1349	2184	337			
Gasa	23	41	8	154	195	38			
Haa	290	319	231	691	787	149			
Lhuentse	204	324	99	664	523	75			
Monggar	2600	1843	537	3733	3443	1949	1162	829	
Paro	3274	2282	859	4904	793	6519			
Pemagatshel	910	735	519	1232	1815	156	40		
Punakha	1067	1085	512	1843	1933	613			

Dzongkhag	X-Ray:			Ultrasound:				Computed Tomography-CT	Endoscopy	Magnetic Resonance Imaging-MRI
	Chest	Extremities	Others	Gynaecology/Obs	Abdomen	Others				
Samdrup Jongkhar	1668	1435	590	2679	3630	761	208			
Samtse	2579	2937	1074	4432	3672	2152				
Sarpang	3980	3417	1645	4261	5253	1962	4851			
Thimphu	26653	14686	6463	19350	17844	8271	2269	3697		
Trashigang	1985	955	655	3414	2745	1477	298			
Trongsa	548	511	191	1111	991	202				
Tsirang	782	831	210	1428	1516	486				
Wangdue	1548	1812	779	3323	2550	1848	1094			
Zhemgang	313	371	150	867	1016	381				
Total	52952	38846	16460	64069	59919	31232	4824	7364	3697	

Table 6.7: Hospital admission and inpatient days, 2022

Dzongkhag	Total Hospital admissions	Discharged	Deaths	Absconded	Patient days	BHU admissions
Bumthang	987	820	13	4	2941	108
Chhukha	3763	3300	60	7	13861	118
Dagana	1143	998	20	22	3737	643
Gasa	35	23	1	1	88	22
Haa	272	213	5		1132	20
Lhuentse	570	435	6	1	1930	158
Monggar	4007	4008	98		22319	785
Paro	2335	1801	28	4	7179	139
Pemagatshel	993	773	13	6	3867	235
Punakha	1351	1123	26	6	5589	226
Samdrup Jongkhar	1874	1643	38	2	6669.7	570
Samtse	2966	2287	53	3	10748	425
Sarpang	3781	3425	86	15	15291	90
Thimphu	16849	15837	514	18	127027	21
Trashi Yangtse	902	802	7		2719	188
Trashigang	3687	3003	71	1	3645.9	399
Trongsa	468	387	7		1250	80
Tsirang	1635	1457	27	1	6724	96
Wangdue	2213	1820	26		8543	401
Zhemgang	587	495	17	1	2064	368
Total	50418	44650	1115	92	247324.6	5092

Table 6.8: Number of cases evacuated by Bhutan aeromedical services in 2022 by gender and case classifications

Dzongkhag	Gynae		Medical		Pediatric		Surgical		Trauma		Total
	Male	Female	Male	Female	Male	Female	Male	Female	Male	Female	
Bumthang	2		2	4	2		1		1	1	13
Chhukha			1	1							3
Dagana				1	2	1					4
Gasa	1		15	5	1				2		24
Haa											0
Lhuentse			1								1
Monggar	2		1	2	5	2	3	2	4	1	22
Paro				1							1
Pemagatshel			1	1		1			1		4
Punakha											0
Samdrup Jongkhar	1		1			3			3		8
Samtse			5	3	3				4		15
Sarpang			1			1			2		4
Thimphu			9	5		4	4	4	4		26
Trashigang					2	1			1		4
Trongsa											0
Tsirang	1			1					1		3
Wangdue	1		2						1	1	5
Zhemgang	1				1	3			9	6	20
Total	9		37	21	18	14	8	8	33	9	157

Table 7.1: Morbidity cases availing Traditional Medicine Services

	0-8 years		9-59 years		60+ years		Total
	Male	Female	Male	Female	Male	Female	
Baedken ned	9	7	381	561	273	336	1567
Bji ned	3	3		2			8
Chaa baab ned			15	17	6	13	51
Chham rem	151	148	640	982	335	530	2786
Chher ned			8	19	7	4	38
Chhin ned		2	264	186	80	73	605
Chin nyiwai ned		3	438	630	257	326	1654
Chong chen gi ned			6	6	2	1	15
Chuser gi ned	3	2	558	1031	367	546	2507
Dreg ned	13	2	530	580	277	255	1657
Drey ned	1	1	57	66	34	14	173
Druumbui ned	5		1488	2475	1360	1520	6848
Go ned	12	20	1361	3208	743	929	6273
Ja ned tshed thru			13	1	2	2	18
Jae jed	1		90	67	9	7	174
Ju ned		1	69	80	25	50	225
Jur pa methroe pai dhug			14	31		1	46
Kha ned	2	4	148	340	84	80	658
Khel ned	3	9	1328	2130	823	867	5160
Long ned		2	20	27	7	2	58
Lowai ned	35	44	609	884	485	606	2663
Mazhuwa	7	4	192	251	133	142	729
Menbu			12	48	7	9	76
Mig ned		2	50	81	18	25	176

	0-8 years		9-59 years		60+ years		Total
	Male	Female	Male	Female	Male	Female	
Mo ned		6		153		36	195
Mo tshen ned		12		169		28	209
Moogpo			116	183	66	93	458
Nying ned		1	440	659	253	322	1675
Nyo jed		3	51	69	4	11	138
Paag ned	16	20	1072	1282	497	464	3351
Pho ned	23	44	2666	4246	1654	2151	10784
Pho tshen ned	3		127		56		186
Remtshed	413	366	1997	2559	1103	1410	7848
Sin ned	3	10	282	312	100	80	787
Suryia			4	10			14
Thra gi Nyingzer	3	10	1575	2259	1113	1581	6541
Thru ned	1		26	25	14	12	78
Tren ned	1		59	88	31	28	207
Tsa wai ned	23	37	118	172	72	67	489
Ug medewa	6	1	149	302	212	263	933
Yama go sin	41	32	2177	3763	868	979	7860
Zhang druum	3	6	867	917	338	292	2423
mThri Ned	6		243	404	118	118	889
rLung ned	6	11	1688	3109	1839	2978	9631
rMa chi	1	8	162	105	51	58	385
rNaawai ned	2	1	65	64	35	36	203
rTsa kar	42	54	3881	5911	2664	3539	16091
sNa ned	14	5	151	179	31	36	416
Total	852	881	26207	40643	16453	20920	105956

Table 7.1: Morbidity cases availing Traditional Medicine Services

Dzongkhag	TM Unit	New Cases	Old cases	Total
Bumthang	Bumthang Hospital	1948	1986	3934
	Chhumig PHC	485	723	1208
	Tang PHC	317	119	436
	Ura PHC	390	430	820
Chhukha	Chhukha Hospital	430	25	455
	Gedu Hospital	1097	1044	2141
	Khatikha Hospital	1576	569	2145
	Phuentshogling Hospital	987	404	1391
	Renchentse PHC	239	302	541
	Tsimalakha Hospital	324	135	459
Dagana	Dagana Hospital	267	342	609
	Dagapela Hospital	828	716	1544
	Lhamoizingkha Hospital	91	182	273
Gasa	Gasa Hospital	312	107	419
Haa	Dorithasa PHC	2034	1167	3201
	Haa Hospital	1212	1629	2841
	Ngetshena PHC	371	181	552
Lhuentse	Autsho PHC	331	121	452
	Dungkar PHC	417	173	590
	Lhuentse Hospital	310	641	951
	Tagmachhu PHC	366	520	886

Dzongkhag	TM Unit	New Cases	Old cases	Total
Monggar	Daagsa PHC	193	130	323
	Dramedtse PHC	238	246	484
	Gyalpoizhing Hospital	516	384	900
	Kengkhar PHC	550	488	1038
	Monggar ERR Hospital	778	1338	2116
Paro	Paro Hospital	3608	3241	6849
Pemagatshel	Dechhenling PHC	61	272	333
	Dungmaed PHC	545	170	715
	Nganglam Hospital	100	157	257
	Pemagatshel Hospital	336	326	662
	Yurung PHC	413	379	792
Punakha	Kabisa PHC	308	135	443
	Punakha Hospital	2472	1894	4366
	Samadingkha PHC	375	40	415
Samdrup Jongkhar	Dewathang RBA Hospital	426	361	787
	Gomdar Hospital	456	587	1043
	Jomotsangkha Hospital	330	262	592
	Lauri PHC	189	68	257
	Martshala PHC	561	119	680
	Samdrup Jongkhar Hospital	343	439	782
	Samdrupchhoeling Hospital	290	191	481

Dzongkhag	TM Unit	New Cases	Old cases	Total
Samtse	Dorokha Hospital	297	61	358
	Gomtu Hospital	138	299	437
	Samtse Hospital	418	300	718
	Sibsoo Hospital	328	317	645
Sarpang	Chhuzaggang Hospital	115	112	227
	Gelegphu CRR Hospital	1294	1084	2378
	Sarpang Hospital	298	351	649
Thimphu	Gidakom Hospital	934	365	1299
	Lingzhi PHC	51	681	732
	NTM Hospital	17437	12137	29574
Trashhi Yangtse	Khamdang Hospital	150	184	334
	Tongmizhangsa PHC	112	85	197
	Yangtse Hospital	636	828	1464
Trashigang	Bartsham Hospital	398	77	475
	Kanglung Hospital	303	239	542
	Khaling Hospital	61	64	125
	Rangjoong Hospital	375	295	670
	Riserboo Hospital	56	51	107
	Trashigang Hospital	628	479	1107
	Tsangpo Hospital	177	86	263

Dzongkhag	TM Unit	New Cases	Old cases	Total
Trongsa	Dangdung Hospital	41	328	369
	Korphoog PHC	75	351	426
	Kuengarabten PHC	194	248	442
	Trashiling PHC	93	179	272
	Trongsa Hospital	394	530	924
Tsirang	Damphu Hospital	565	337	902
	Mendrelgang PHC	378	413	791
	Tsirang Toed Hospital	314	116	430
Wangdue	Esa Hospital	782	1881	2663
	Gaselo PHC	129	189	318
	Kamichhu PHC	240	129	369
	Saephoog PHC	132	449	581
	Samtengang PHC	424	424	848
	Wangdue Hospital	1285	1870	3155
Zhemgang	Goshing PHC	91	35	126
	Panbang Hospital	304	89	393
	Yebilaptsa Hospital	134	146	280
	Zhemgang Hospital	132	71	203

Table 7.3: Therapeutic services provided by TM services in 2022

	0-8 years		9-59 years		60+ years		Total
	Male	Female	Male	Female	Male	Female	
Gold needle	6	17	4161	6675	3080	3959	1567
Gold needle with Moxa	1	1	15	37	20	15	8
Silver needle		1	116	162	92	72	51
Blood letting	37	63	400	684	163	192	2786
Cauterization	3		20	53	15	13	38
Hot oil compression	37	28	2070	5107	2157	3792	605
Wet cupping	29	41	425	505	177	184	1654
Localized steaming	43	88	7474	11249	4638	6043	15
Herbal steam bath		4	954	1573	818	1185	2507
Herbal bath			1225	2045	902	677	1657
Nasal cleansing	46	20	763	1149	374	562	173
Acupuncture	5		4409	9369	2466	3000	6848
Moxabusion			40	81	45	34	6273
Ginger moxa			105	251	40	73	18
Horn suction			4	2			174
Herbal ball compression		1	222	402	121	219	225

	0-8 years		9-59 years		60+ years		Total
	Male	Female	Male	Female	Male	Female	
Herbal compression	21	20	1004	1369	500	604	46
Purgation			6	5	1		658
Emesis			7	57	6	1	5160
Mild Enema	15	25	352	481	130	82	58
Urine analysis			144	212	132	164	2663
Affusion			74	307	9	40	729
Strong enema	4	9	183	182	48	18	76
Massage	19	15	1579	2372	1099	1359	176
Zhey ney and lue jong	2	7	563	897	185	214	
Other compression			5	9	4	4	

Table 7.4: Facility-wise Therapeutic services provided by Traditional Medicine Service-2022

Dzongkhag	Health Facilities	Gold needle	Silver needle	Blood letting	Localized steaming	Herbal bath	Nasal cleansing
Bumthang	Bumthang Hospital	239			1168		95
	Chhumig PHC	56			168		5
	Tang PHC	103			259		
	Ura PHC	110			156		
Chhukha	Chhukha Hospital	203	1	1	506		5
	Gedu Hospital	279	1	11	375		21
	Khatikha Hospital	107			167		
	Phuentshogling Hospital	449	3	4	841		24
	Renchentse PHC	110			205		11
Dagana	Tsimalakha Hospital	21		2	566		12
	Dagana Hospital	75	8		241		
	Dagapela Hospital	99	54	9	116	81	2
	Lhamoizingkha Hospital	47			115		
Gasa	Gasa Hospital	52		8	69		

Dzongkhag	Health Facilities	Gold needle	Silver needle	Blood letting	Localized steaming	Herbal bath	Nasal cleansing
Haa	Dorithasa PHC	357	48		772		
	Haa Hospital	93		6	604		3
	Ngetshena PHC	78		6	107		
Lhuentse	Autsho PHC	162					
	Dungkar PHC	100		4	15		
	Lhuentse Hospital	143	1	1	148		6
	Tagmachhu PHC	146	4		105		1
	Daagsa PHC	78	2				
Monggar	Dramedtse PHC	65		1	405		3
	Gyalpoizhing Hospital	138	69	30			
	Kengkhar PHC	518	11		249		
Paro	Monggar ERR Hospital	646	11	55	1619		143
	Paro Hospital	528	16	35	2096	3	20

Dzongkhag	Health Facilities	Gold needle	Silver needle	Blood letting	Localized steaming	Herbal bath	Nasal cleansing
Pemagatshel	Dechhenling PHC	118		34	420		
	Dungmaed PHC	186	8		189		
Punakha	Nganglam Hospital	145		11	77		
	Pemagatshel Hospital	543	7	2	299		
	Yurung PHC	109		21	231		10
	Kabisa PHC	73	1		179		
Samdrup Jongkhar	Punakha Hospital	305	58	47	503	19	23
	Samadangkha PHC	52		11	112		4
	Dewathang RBA Hospital	278		1	268		
	Gomdar Hospital	442					
Samdrup Jongkhar	Jomotsangkha Hospital	138	5	5			
	Lauri PHC	157			64		2
	Martshala PHC	307			63		
	Samdrup Jongkhar Hospital	137		14	309		2
	Samdrupchhoeing Hospital	222			169		

Dzongkhag	Health Facilities	Gold needle	Silver needle	Blood letting	Localized steaming	Herbal bath	Nasal cleansing
Samtse	Dorokha Hospital	65	3		98		3
	Gomtu Hospital	20		4	203		
	Samtse Hospital	61	7	1	83		22
	Sibsoo Hospital	90			70		
Sarpang	Chhuzaggang Hospital	65					
	Gelegphu CRR Hospital	499		20	530	161	11
	Sarpang Hospital	57			180		
	Gidakom Hospital	77		6	747		77
Thimphu	Lingzhi PHC	47					
	NTM Hospital	3055	47	924	7504	4239	2262
Trashi Yangtse	Khamdang Hospital	57			44		
	Tongmizhangsa PHC	113	1				
	Yangtse Hospital	488		28	719	222	

Dzongkhag	Health Facilities	Gold needle	Silver needle	Blood letting	Localized steaming	Herbal bath	Nasal cleansing
Trashigang	Bartsham Hospital	194			304		
	Kanglung Hospital	253					
	Khaling Hospital	40			64		
	Rangjoong Hospital	1056	1	65	209		
	Riserboo Hospital	182			62		
	Trashigang Hospital	783	6	9	287		
	Tsangpo Hospital	303		22			
	Dangdung Hospital	26		2	96		
	Korphoog PHC	69			115		
	Kuengarabten PHC	39			88		
Trongsa	Trashiling PHC	27			87		
	Trongsa Hospital	91		15	235		
	Damphu Hospital	182		8	821	124	73
Tsirang	Mendrelgang PHC	118		32	261		8
	Tsirang Toed Hospital	96	3	22	44		

Dzongkhag	Health Facilities	Gold needle	Silver needle	Blood letting	Localized steaming	Herbal bath	Nasal cleansing
Wangdue	Esa Hospital	696	14	13	500		2
	Gaselo PHC	16			111		
	Kamichhu PHC	71		8	156		
	Saephoog PHC	74			411		
	Samtengang PHC	81	34	4	2		
	Wangdue Hospital	286	15	34	814		46
	Goshing PHC	115			30		
	Panbang Hospital	76	2		417		12
	Yebilaptsa Hospital	19		3	142		
	Zhemgang Hospital	97	2		146		6
Total		17898	443	1539	29535	4849	2914

"Our Planet, Our Health Campaign"



Ministry of Health (MoH), Royal Government of Bhutan.
PO Box No: 726, Kawang Jangsa, Thimphu, Bhutan. 11001
Tel No: +975-2- 328095/321842
Email: ppd@health.gov.bt
Website: www.health.gov.bt