

# MONTHLY DISEASES EPIDEMIOLOGY REPORT

## Royal Centre for Disease Control

DoPH, Ministry of Health

Wangchutaba, Serbithang, Thimphu, Bhutan.

Post Box No. 667, Tele: +975-02-350577/78, Fax: +975-2-332464

web: <http://www.rcdc.gov.bt>, E Mail: [rcdc.bhutan@gmail.com](mailto:rcdc.bhutan@gmail.com)

December (Epidemiological Weeks 49-52), 2024

### 1. Highlights on NEWARS reporting

#### Immediate Reporting:

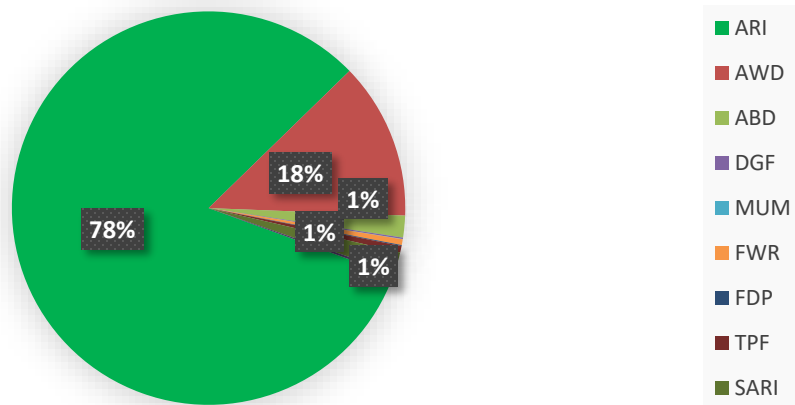
- a) Twenty-one malaria cases were reported from health centers under Sarpang, and Chhukha dzongkhag.
- b) The Vaccine-Preventable and Venereal Disease Laboratory (VPVDL) received and analyzed 12 samples of suspected measles/rubella cases; none of the sample tested positive for measles or rubella.

#### Event Reporting:

Three events/disease outbreaks were reported in even-based surveillance during the month. Of those, one event was of Influenza-like illness from Samtse, one was of Acute-gastroenteritis from Tshaidang, Zhemgang, and one of Malaria (three cases from same) family, Bongo, Chhukha. Local Health Centers responded to all outbreaks based on RCDC recommendations. There was no complication arise as a result of the events described above.

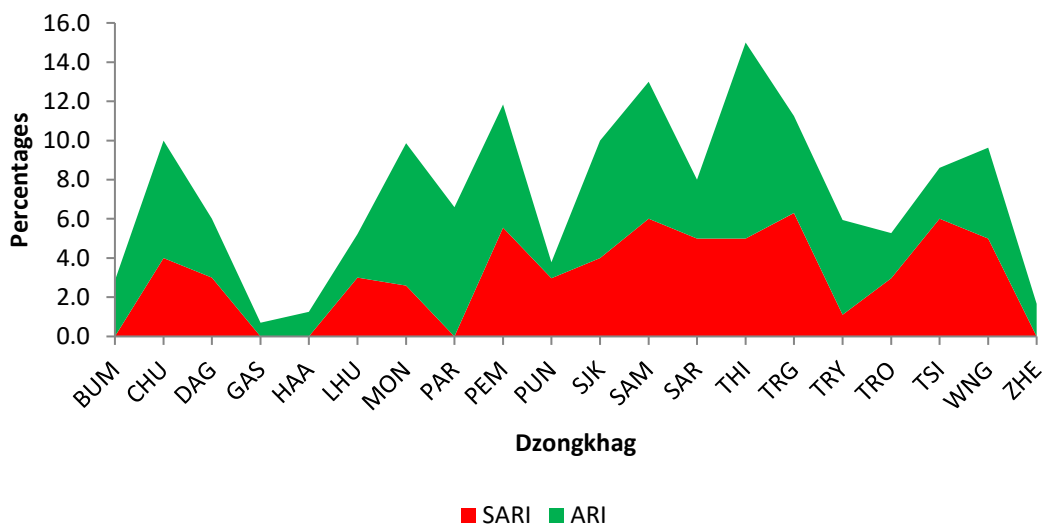
## 2. Status of Notifiable Diseases/Syndromes reported:

A total of 14255 cases of notifiable diseases were reported through indicator-based surveillance system: among the 11 weekly notifiable diseases, Acute Respiratory Infection (ARI) (78.0%) followed by Acute Watery Diarrhea (AWD) (18.0%) topped the list (**Figure 1**).



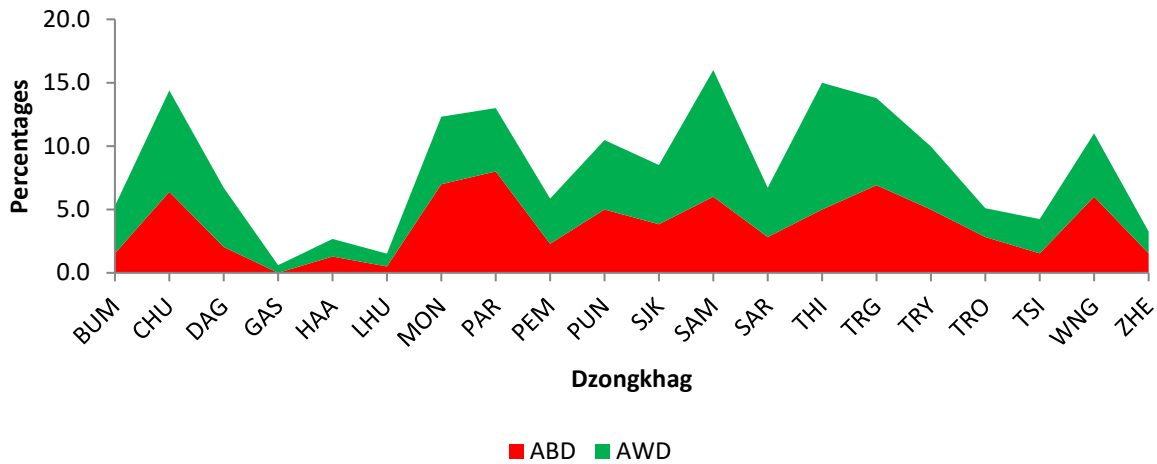
**Figure 1:** Proportion of notifiable diseases reported in NEWARS

The most common notifiable disease that was reported was acute respiratory infection (ARI). Among dzongkhags Thimphu reported the maximum number of respiratory illnesses (**Figure 2**).



**Figure 2:** Number of respiratory illness reported by dzongkhags

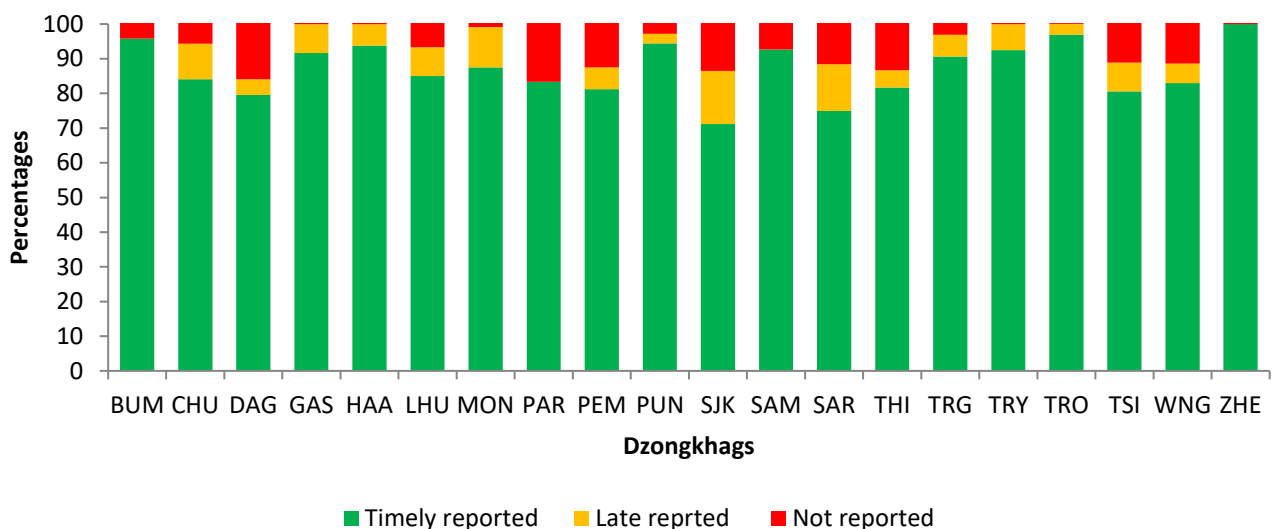
Diarrheal illnesses continue to rank as the second most prevalent notifiable diseases. Chhukha, and Samtse dzongkhag reported the highest number of cases of diarrhea throughout the month (**Figure 3**).



**Figure 3:** Number of diarrheal diseases reported by dzongkhags

### 3. Status of Notifiable Diseases/Syndromes for the month

Of the total weekly reports that were received by the system, 80.0% were submitted on time, 8.0% were sent lately, and the remaining reports were not submitted (**Figure 4**).



**Figure 4:** Reporting status of notifiable diseases by dzongkhags