

MONTHLY DISEASES EPIDEMIOLOGY REPORT

Royal Centre for Disease Control

DoPH, Ministry of Health

Wangchutaba, Serbithang, Thimphu, Bhutan.

Post Box No. 667, Tele: +975-02-350577/78, Fax: +975-2-332464

web: <http://www.rcdc.gov.bt>, E Mail: rcdc.bhutan@gmail.com



January (Epidemiological Weeks 1- 4), 2025

1. Highlights on NEWARS reporting

Immediate Reporting:

- a) Thirteen samples of suspected Measles/Rubella cases were reported none of the samples tested positive.
- b) A suspected case of pertussis was reported from JDWNRH, it was tested negative for *Bordetella pertussis*

Event Reporting:

- a) No any events/diseases outbreak were reported during the month

2. Status of Notifiable Diseases/Syndromes reported:

A total of 8295 cases of notifiable diseases were reported in the weekly indicator-based surveillance system, among the 11 weekly notifiable diseases, the highest percentages of cases reported were respiratory illnesses (76.0%) followed by Acute Watery Diarrhea (AWD) (19.0%) (**Figure 1**).

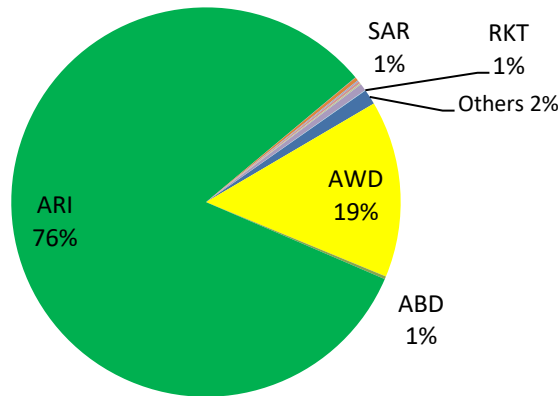


Figure 1: Proportion of notifiable diseases reported in NEWARS

Among dzongkhags, Chhukha, and Samtse had reported the highest percentage of ARI and SARI cases (**Figure 2**)

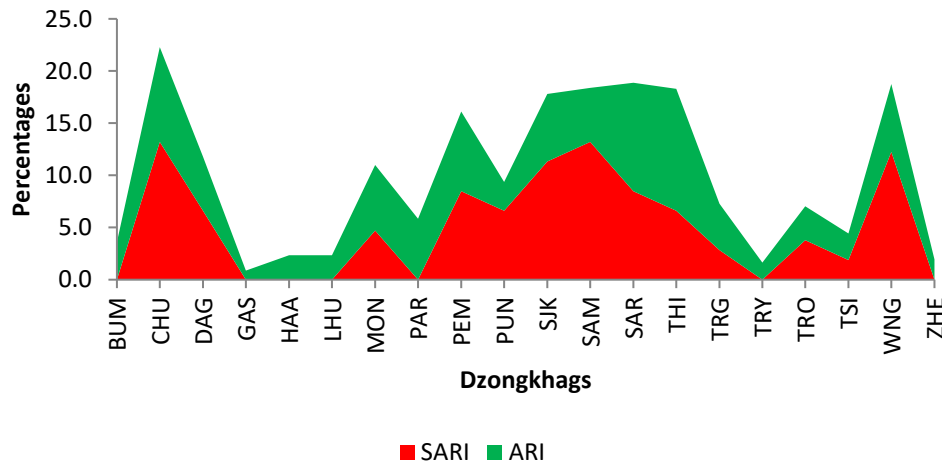


Figure 2: Proportion of ARI and SARI reported by Dzongkhags

In regards to diarrheal diseases Paro and Tsirang dzongkhag reported the highest percentage of AWD, while the highest percentage of ABD was reported from Paro (**Figure 3**).

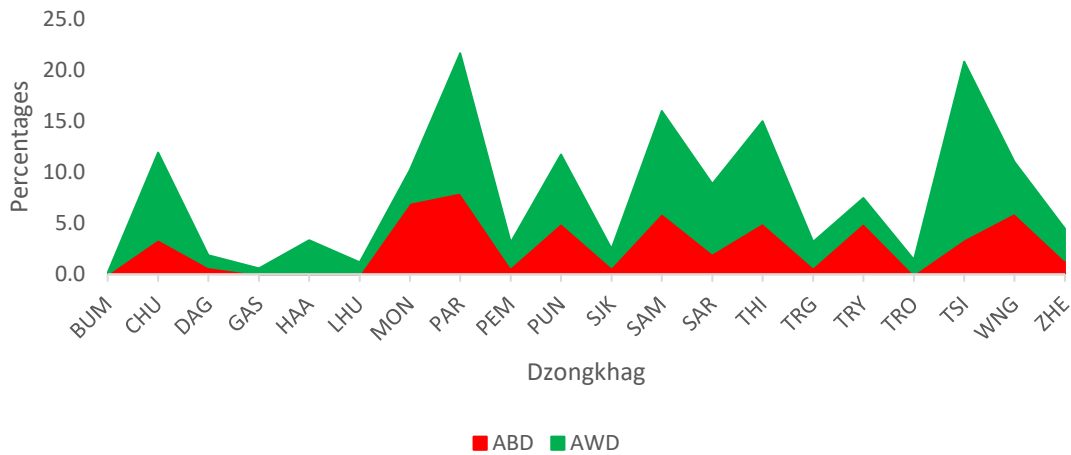


Figure 3: Proportion of ABD and AWD reported by Dzongkhags

3. Status of Notifiable Diseases/Syndromes for the month

Of the total weekly report received in the system, 76.0% were reported in time, 8.0% were lately reported, and the rest were not reported, the reporting percentages declined compared with the previous month's reports (**Figure 4**).

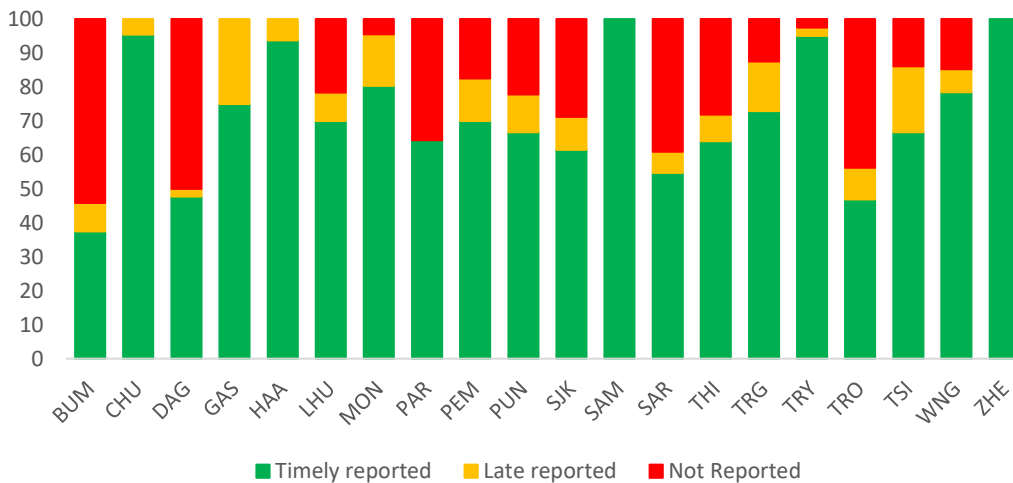


Figure 4: Reporting status of Notifiable Diseases by Dzongkhags