

MONTHLY DISEASES EPIDEMIOLOGY REPORT

Royal Centre for Disease Control

Ministry of Health

Wangchutaba, Serbithang, Thimphu, Bhutan.

Post Box No. 667, Tele: +975-02-350577/78, Fax: +975-2-332464

web: <http://www.rcdc.gov.bt>, E Mail: rcdc.bhutan@gmail.com



August (Epidemiological Weeks 31-34), 2025

1. Highlights on NEWARS reporting:

Immediate Reporting:

- a) Thirty-four samples of suspected Measles/Rubella cases were received and tested at RCDC of those one tested positive for Measles and none tested positive for Rubella IgM.
- b) Total of six confirmed cases of malaria were reported [Chhukha (1), Sarpang (4) and Samtse (1)] during the month.
- c) Two suspected cases of acute encephalitis syndrome from JDWNRH and one Acute Hemorrhagic Fever Syndrome from CRRH was reported during the month.

Event Reporting:

Five disease outbreak were reported during the month. Two were outbreak of Influenza-like Illness, One dengue fever outbreak reported from Tashicholing under Samtse, One was of Chicken pox and another was an outbreak of Acute Gastroenteritis. All outbreaks were responded by DHRRT and Local Health Centers upon the recommendation of RCDC.

2. Status of Notifiable Diseases/Syndromes reported:

A total of 11295 cases of notifiable diseases were reported in the weekly indicator-based surveillance system, the reported cases increased compared with July 2025. Among the 11 weekly notifiable diseases, the highest percentages of cases reported were respiratory illnesses (79.0%) followed by Acute Watery Diarrhea (AWD) (18.0%) (**Figure 1**).

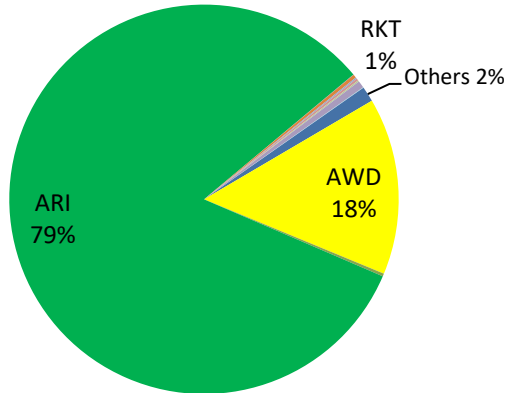


Figure 1: Proportion of notifiable diseases reported in NEWARS

Among dzongkhags, Chhukha, and Samtse had consistently reported the highest percentage of ARI and SARI cases (**Figure 2**)

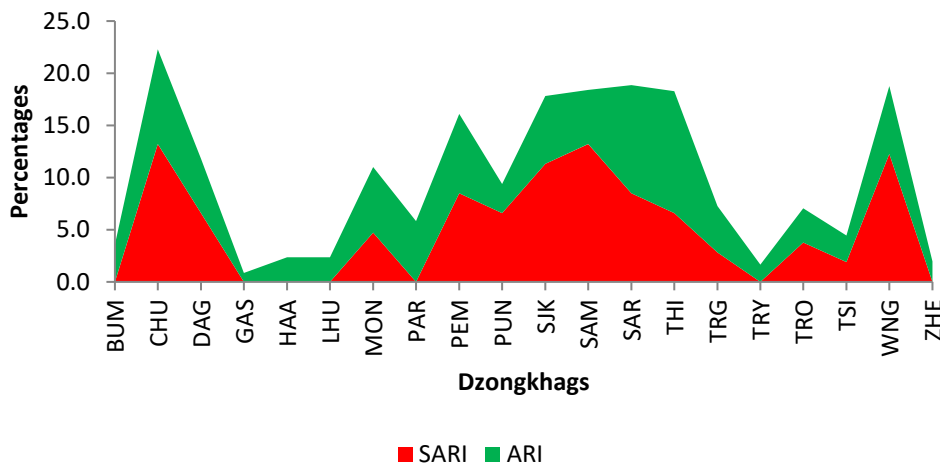


Figure 2: Proportion of ARI and SARI reported by Dzongkhags

In regards to diarrheal diseases Paro and Wangduephodrang dzongkhag reported the highest percentage of AWD, while the highest percentage of ABD was reported from Paro (**Figure 3**).

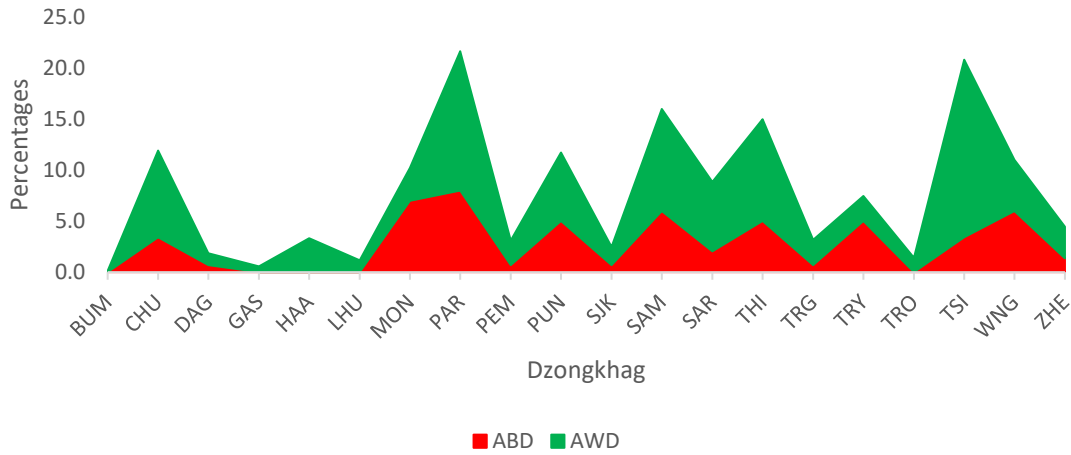


Figure 3: Proportion of ABD and AWD reported by Dzongkhags

3. Status of Notifiable Diseases/Syndromes for the month

Of the total weekly report received in the system, 79.0% were reported in time, 8.0% were lately reported, and the rest were not reported, the reporting percentages declined compared with the previous month's reports (**Figure 4**).

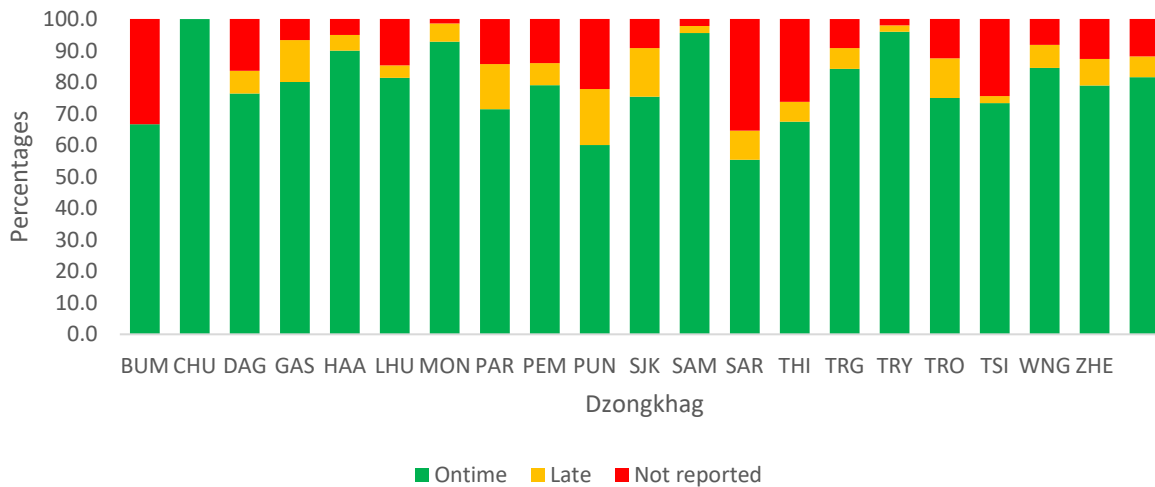


Figure 4: Reporting status of notifiable diseases by Dzongkhags