

MONTHLY DISEASES EPIDEMIOLOGY REPORT

Royal Centre for Disease Control

Ministry of Health

Wangchutaba, Serbithang, Thimphu, Bhutan.

Post Box No. 667, Tele: +975-02-350577/78, Fax: +975-2-332464

web: <http://www.rcdc.gov.bt>, E Mail: rcdc.bhutan@gmail.com



September (Epidemiological Weeks 35-39), 2025

1. Highlights on NEWARS reporting:

Immediate Reporting:

- a) Twenty-five samples of suspected Measles/Rubella cases were received and tested at RCDC of those none tested positive for Measles and Rubella IgM.
- b) Total of six confirmed cases of malaria were reported from Sarpang dzongkhag during the month.
- c) Two suspected cases of severe dengue one from Punakha and another from Haa was reported: both tested negative by ELISA at RCDC.

Event Reporting:

Eight disease outbreak were reported during the month. Four were outbreak of Influenza-like Illness, Two were of acute gastroenteritis, one was of viral fever and one was of Chickenpox outbreak during the month. All outbreaks were responded by DHRRT and Local Health Centers upon the recommendation of RCDC.

2. Status of Notifiable Diseases/Syndromes reported:

A total of 11942 cases of notifiable diseases were reported in the weekly indicator-based surveillance system, the reported cases was in consistent with cases reported in August 2025. Among the 11 weekly notifiable diseases, the highest percentages of cases reported were respiratory illnesses (79.0%) followed by Acute Watery Diarrhea (AWD) (18.0%) (**Figure 1**).

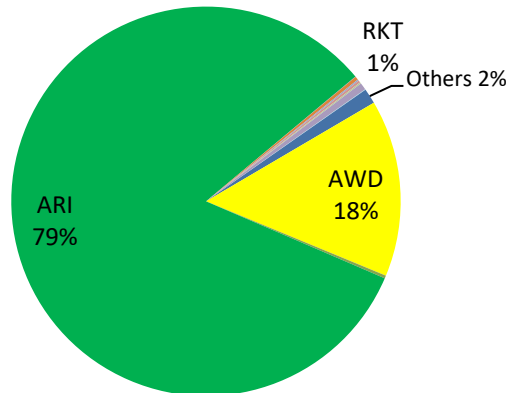


Figure 1: Proportion of notifiable diseases reported in NEWARS

Among dzongkhags, Chhukha, and Samtse had consistently reported the highest percentage of ARI and SARI cases during September (**Figure 2**)

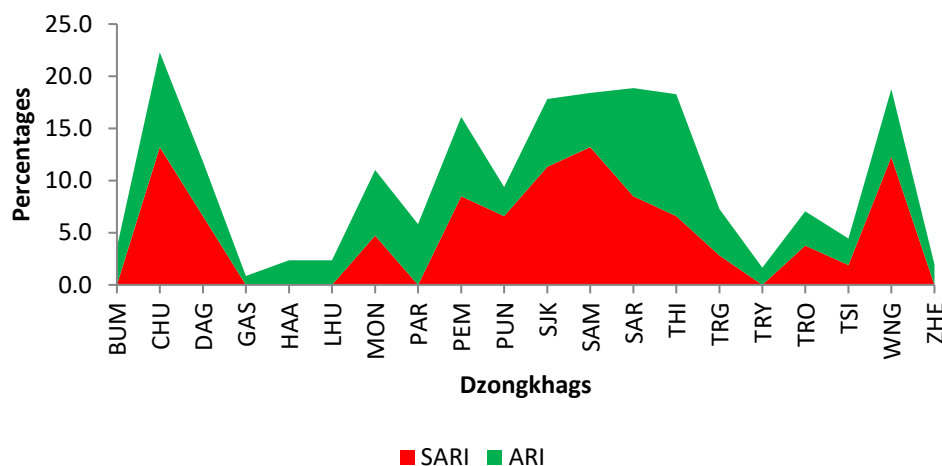


Figure 2: Proportion of ARI and SARI reported by Dzongkhags

In regards to diarrheal diseases Samtse and Thimphu dzongkhag reported the highest percentage of AWD, while the highest percentage of ABD was reported from Paro (**Figure 3**).

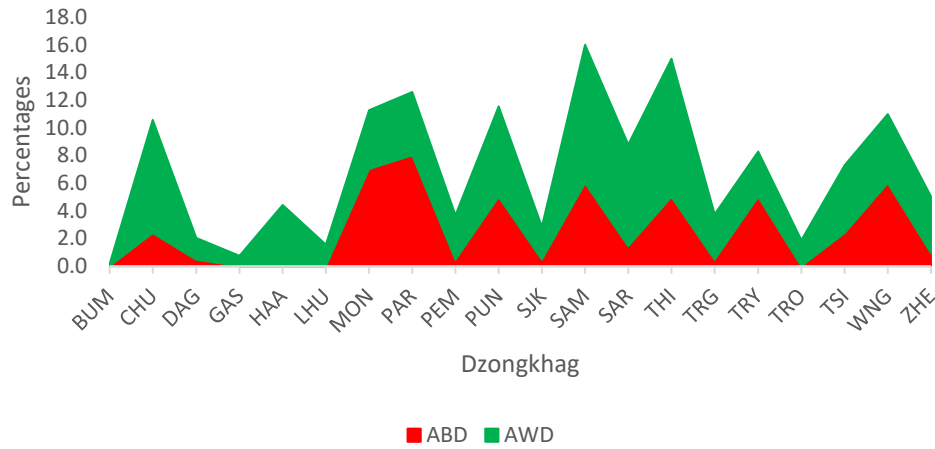


Figure 3: Proportion of ABD and AWD reported by Dzongkhags

3. Status of Notifiable Diseases/Syndromes for the month

Of the total weekly report received in the system, 80.0% were reported in time, 8.0% were lately reported, and the rest were not reported, the reporting percentages declined compared with the previous month’s reports (**Figure 4**).

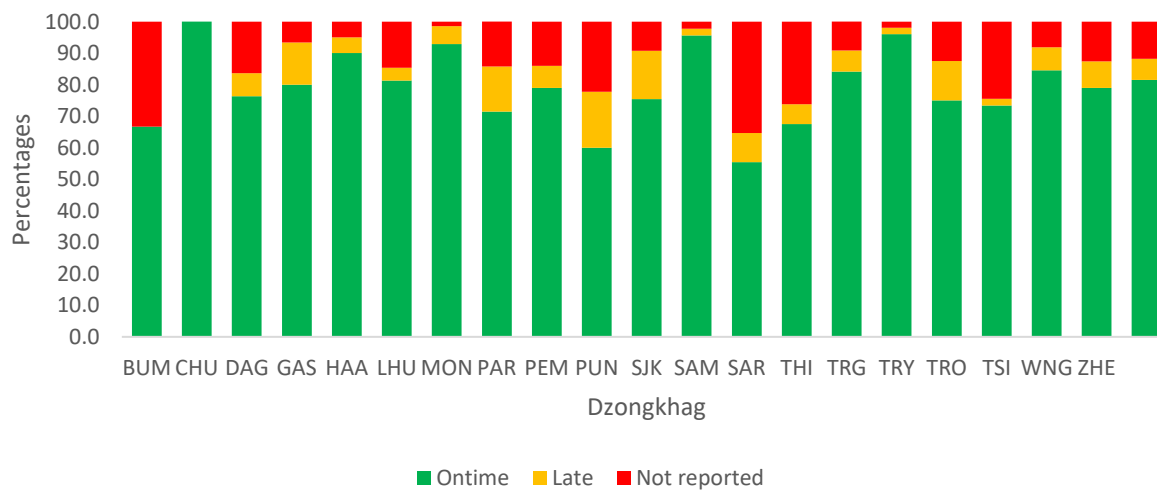


Figure 4: Reporting status of notifiable diseases by Dzongkhags