

# MONTHLY DISEASES EPIDEMIOLOGY REPORT

## Royal Centre for Disease Control

### Ministry of Health

Wangchutaba, Serbithang, Thimphu, Bhutan.

Post Box No. 667, Tele: +975-02-350577/78, Fax: +975-2-332464

web: <http://www.rcdc.gov.bt>, E Mail: [rcdc.bhutan@gmail.com](mailto:rcdc.bhutan@gmail.com)



November (Epidemiological Weeks 44-48), 2025

#### 1. Highlights on NEWARS reporting:

##### Immediate Reporting:

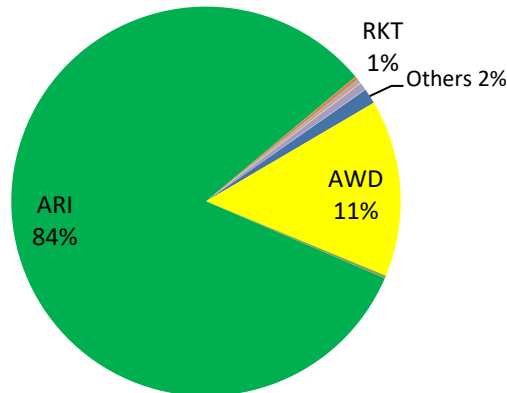
- a) Seven samples of suspected Measles/Rubella cases were received and tested at RCDC of those none tested positive for Measles and Rubella IgM.
- b) Seven confirmed cases of malaria were reported from Sarpang dzongkhag during the month.
- c) One suspected cases of severe dengue two from Mongar RR Hospital

##### Event Reporting:

During the month, three disease outbreaks were recorded: of those one cases of Influenza-like Illness from Gasa, one of Chickenpox from Lhuentse, and one outbreak of Food poisoning, Minjiwoong. Each events was promptly addressed by the District Health Rapid Response Team (DHRRT) and local health centers following RCDC's recommendations.

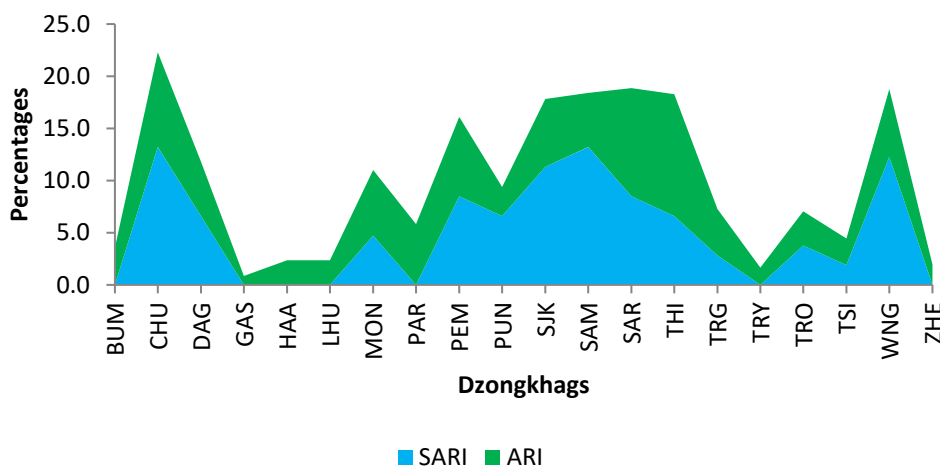
## 2. Status of Notifiable Diseases/Syndromes reported:

A total of 12,009 cases of notifiable diseases were recorded through the weekly indicator-based surveillance system, reflecting a trend consistent with the figures reported in October 2025. Of the 11 notifiable conditions monitored weekly, respiratory illnesses accounted for the majority of cases (84.5%), followed by Acute Watery Diarrhea (AWD), which comprised 8.0% of the total (**Figure 1**).



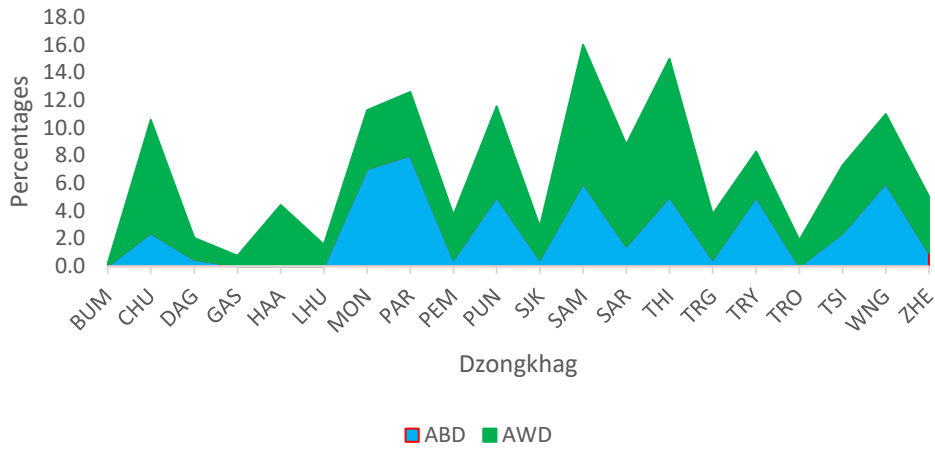
**Figure 1:** Proportion of notifiable diseases reported in NEWARS

Among dzongkhags, Chhukha, and Samtse had consistently reported the highest percentage of ARI and SARI cases during October 2025 (**Figure 2**)



**Figure 2:** Proportion of ARI and SARI reported by Dzongkhags

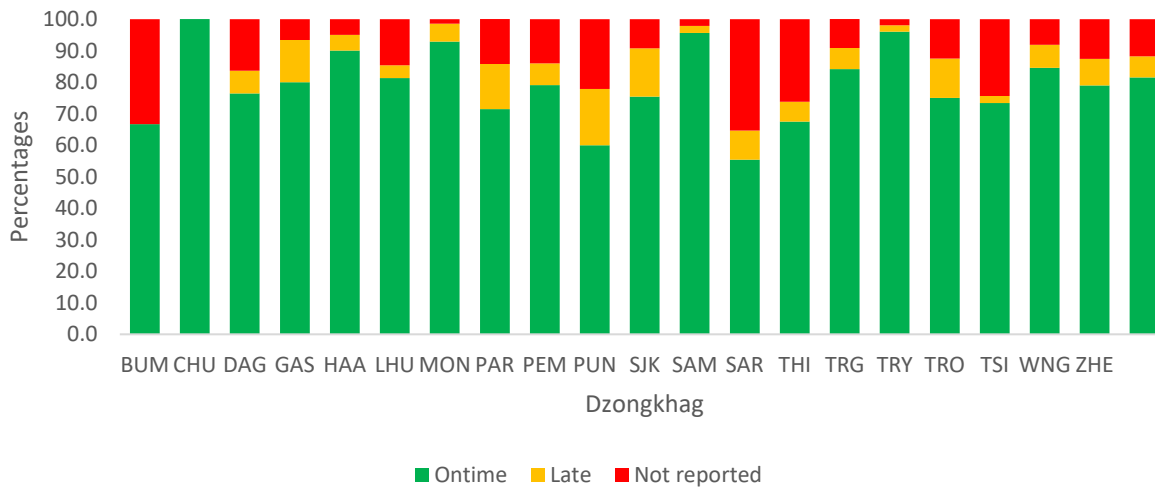
In regards to diarrheal diseases Samtse and Wangduephodrang dzongkhag reported the highest percentage of AWD, while the highest percentage of ABD was reported from Paro (**Figure 3**).



**Figure 3:** Proportion of ABD and AWD reported by Dzongkhags

### 3. Status of Notifiable Diseases/Syndromes for the month

Of the total weekly report received in the system, 79.0% were reported in time, 8.0% were lately reported, and the rest were not submitted, overall reporting percentages declined compared with the previous month's reports (**Figure 4**).



**Figure 4:** Reporting status of notifiable diseases by Dzongkhags