

MONTHLY DISEASES EPIDEMIOLOGY REPORT

Royal Centre for Disease Control

Ministry of Health

Wangchutaba, Serbithang, Thimphu, Bhutan.

Post Box No. 667, Tele: +975-02-350577/78, Fax: +975-2-332464

web: <http://www.rcdc.gov.bt>, E Mail: rcdc.bhutan@gmail.com



October (Epidemiological Weeks 40-43), 2025

1. Highlights on NEWARS reporting:

Immediate Reporting:

- a) Twenty-eight samples of suspected Measles/Rubella cases were received and tested at RCDC of those none tested positive for Measles and Rubella IgM.
- b) Three confirmed cases of malaria were reported from Sarpang dzongkhag during the month.
- c) Three suspected cases of severe dengue two from Mongar and another one from Sarpang was reported: all tested negative by ELISA at RCDC.
- d) Two suspected pertussis was reported from JDWNRH, both tested negative for negative for *Bordetella pertussis*.

Event Reporting:

During the month, six disease outbreaks were recorded: two cases of Influenza-like Illness, two of acute gastroenteritis, one of Scrub typhus fever, and one outbreak of Mumps. Each incident was promptly addressed by the District Health Rapid Response Team (DHRRT) and local health centers following RCDC's recommendations.

2. Status of Notifiable Diseases/Syndromes reported:

A total of 10,231 cases of notifiable diseases were recorded through the weekly indicator-based surveillance system, reflecting a trend consistent with the figures reported in September 2025. Of the 11 notifiable conditions monitored weekly, respiratory illnesses accounted for the majority of cases (83.0%), followed by Acute Watery Diarrhea (AWD), which comprised 11.0% of the total (**Figure 1**).

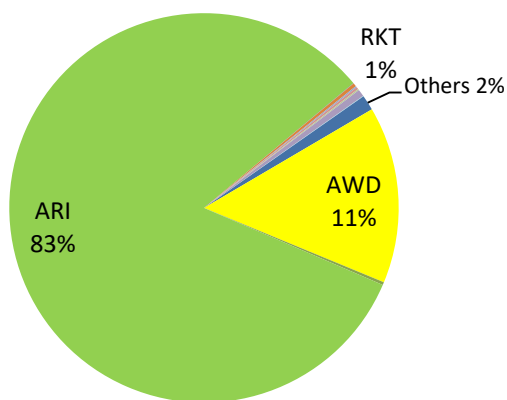


Figure 1: Proportion of notifiable diseases reported in NEWARS

Among dzongkhags, Chhukha, Samtse and Thimphu had consistently reported the highest percentage of ARI and SARI cases during September and October 2025 (**Figure 2**)

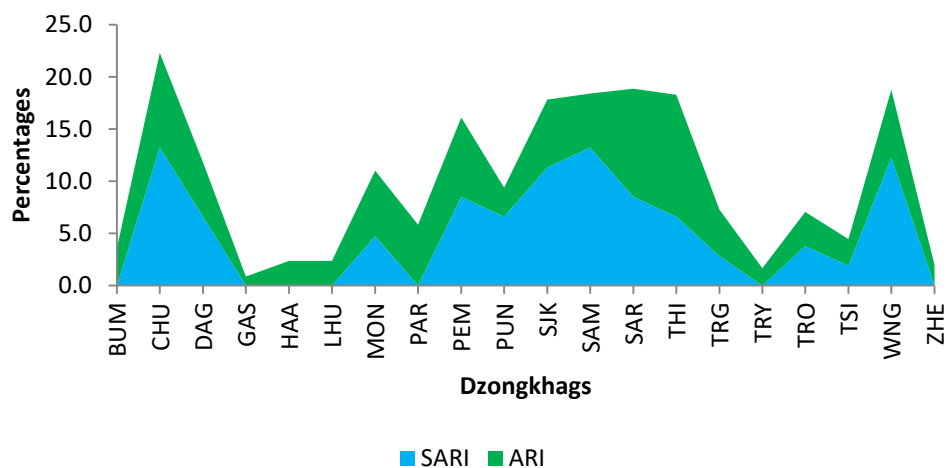


Figure 2: Proportion of ARI and SARI reported by Dzongkhags

In regards to diarrheal diseases Samtse and Thimphu dzongkhag reported the highest percentage of AWD, while the highest percentage of ABD was reported from Paro (**Figure 3**).

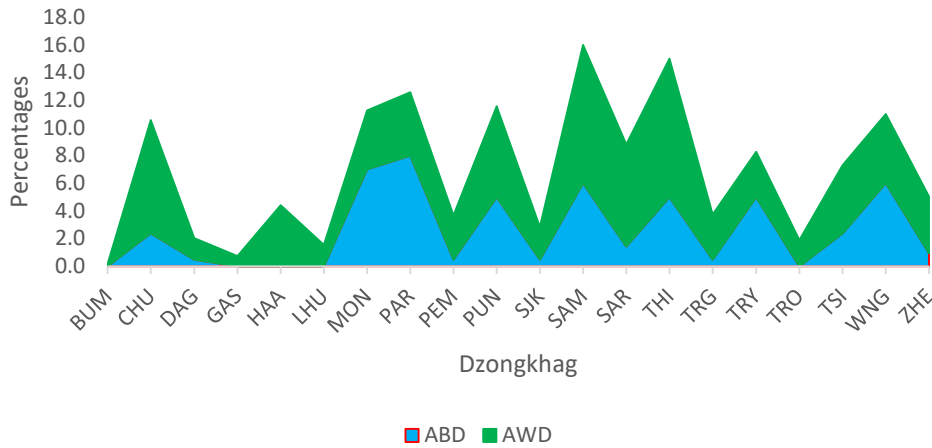


Figure 3: Proportion of ABD and AWD reported by Dzongkhags

3. Status of Notifiable Diseases/Syndromes for the month

Of the total weekly report received in the system, 80.0% were reported in time, 8.0% were lately reported, and the rest were not submitted, overall reporting percentages declined compared with the previous month's reports (**Figure 4**).

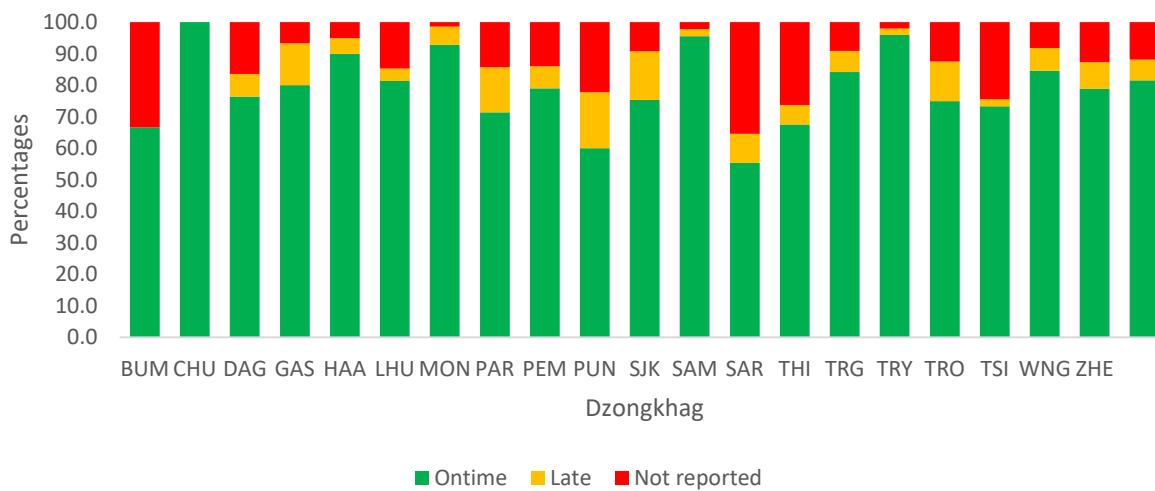


Figure 4: Reporting status of notifiable diseases by Dzongkhags