



Biweekly National Respiratory Virus Sentinel Surveillance Report

Epidemiological Week 51 & 52 (Dec 15 — Dec 28), 2025)

Influenza activity showed a positivity rate of 30.6% (22 cases) in week 51, and 30.8% (16 cases) in week 52. A total of 124 respiratory samples were tested for Influenza, SARS-CoV-2, and RSV using real-time RT-PCR, including 72 ILI cases, 22 SARI cases, and 30 eSARI samples. No SARS-CoV-2 cases were detected during weeks 51 and 52. Among RSV-positive cases, 4 were RSV-A and 12 were RSV-B. All sentinel sites reported in week 51; however, in week 52, Paro Hospital and ERRH Mongar did not submit SARI data, while Punakha and Samtse Hospitals did not submit ILI data.

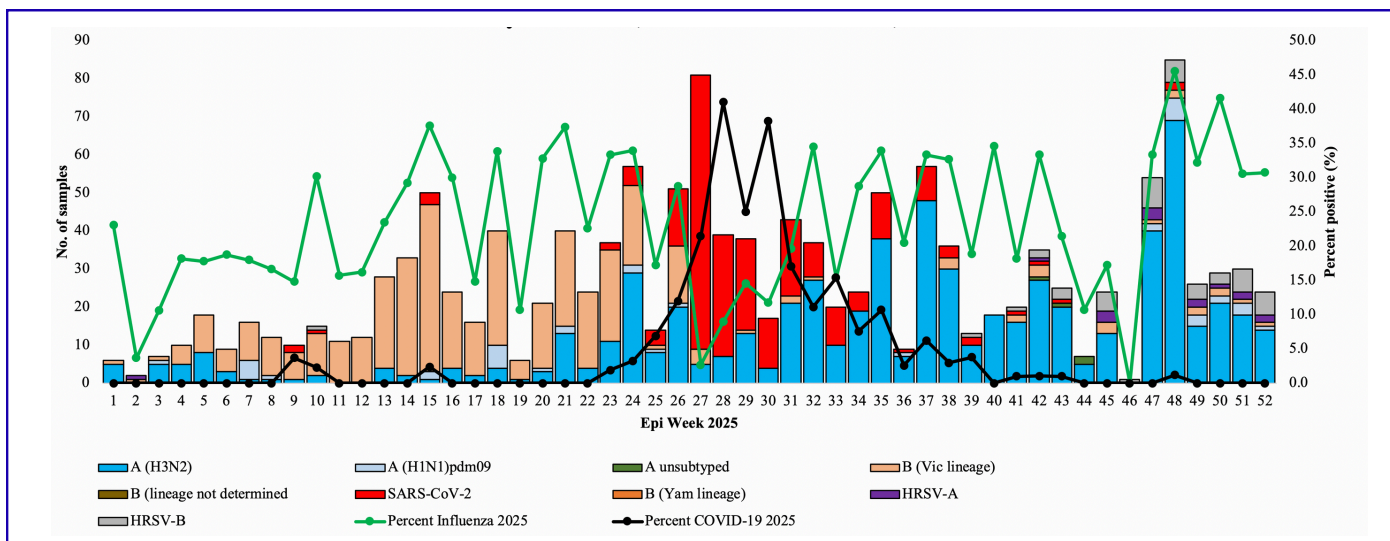


Figure 1. Weekly Influenza subtypes, RSV and SARS-CoV-2 through ILI and SARI Sentinel Surveillance

Table 1. Influenza subtypes, RSV and SARS-CoV-2 in Testing week 51 & 52

Sites	ILI				SARI			eSARI					Grand Total	
	FLU A/H3	FLU A/pdm09	FLU B/Vic	Neg	FLU A/H3	FLU A/pdm09	Neg	FLU A/H3	FLU A/H3 & RSV-A	FLU A/pdm09	RSV B	RSV A		Neg
Gelephu	9		1		1		8	1		1	5	1	7	34
JDWNRH					2	2	4		1		6	2	3	20
Mongar	4			2										7
Paro	2													2
Phuntsholing	2			4			1				1		1	9
Punakha	1			6										7
Samdrup Jongkhar		1	1											2
Samtse				6										6
Trashigang	6			6										12
Trongsa	2			15			2							19
Tsirang							2							2
Lungtenphu				4										4
Grand Total	26	1	2	43	3	2	17	2	1	1	12	3	11	124

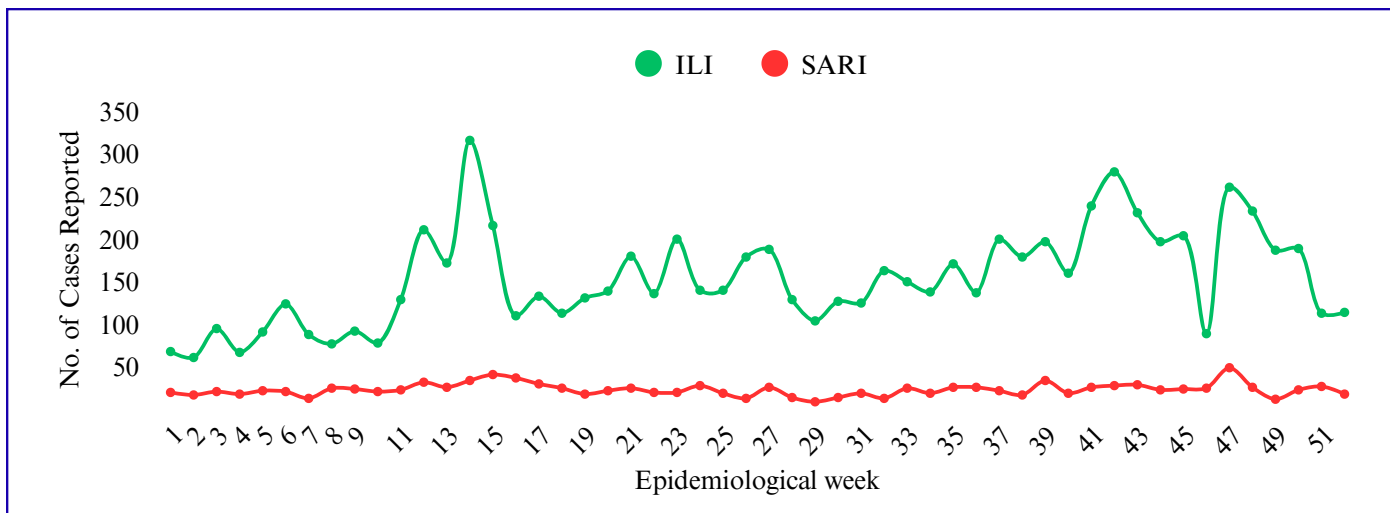


Figure 2. Weekly ILI and SARI cases reported from Sentinel Hospitals

Table 2. ILI and SARI cases reporting status for week 51, 2025

SARI Case Reporting Status 51,2025						ILI Case Reporting Status 51,2025				
Year	Week	Site	Department	SARI	IPD	Year	Week	Site	ILI	OPD
2025	51	Gelephu CRRH	ICU	0	4	2025	51	Paro Hospital	20	2480
2025	51	Gelephu CRRH	Medical Ward	Not Reported		2025	51	Punakha Hospital	42	1421
2025	51	Gelephu CRRH	Pediatric Ward	5	19	2025	51	Samdrup Jongkhar Hospital	4	863
2025	51	JDWNRH	Neonatal Ward	0	25	2025	51	Samtse Hospital	2	2248
2025	51	JDWNRH	Neonatal ICU	Not Reported		2025	51	Trashigang Hospital	19	1333
2025	51	JDWNRH	Pediatric Ward	3	18	2025	51	Trongsa Hospital	7	453
2025	51	JDWNRH	Medical Extension Ward	Not Reported		2025	51	Tsirang Hospital	19	1231
2025	51	JDWNRH	Pediatric ICU	Not Reported				Total	113	10029
2025	51	JDWNRH	Cabin	Not Reported						
2025	51	JDWNRH	Medical Ward	0	30					
2025	51	JDWNRH	ICU	0	10					
2025	51	Monggar ERRH	ICU	Not Reported						
2025	51	Monggar ERRH	Neonatal ICU	Not Reported						
2025	51	Monggar ERRH	Pediatric Ward	0	5					
2025	51	Monggar ERRH	Medical Ward	Not Reported						
2025	51	Paro Hospital	General Ward	0	34					
2025	51	Phuntsholing Hospital	Medical Ward	2	24					
2025	51	Punakha Hospital	General Ward	4	24					
2025	51	Samdrup Jongkhar Hospital	General Ward	2	11					
2025	51	Samtse Hospital	General Ward	0	31					
2025	51	Trashigang Hospital	General Ward	4	25					
2025	51	Trongsa Hospital	General Ward	2	9					
2025	51	Tsirang Hospital	General Ward	4	18					
		Total		26	287					

Table 3. ILI and SARI cases reporting status for week 52, 2025

SARI Case Reporting Status 52,2025						ILI Case Reporting Status 52,2025				
Year	Week	Site	Department	SARI	IPD	Year	Week	Site	ILI	OPD
2025	52	Gelephu CRRH	ICU	Not Reported		2025	52	Paro Hospital	80	2517
2025	52	Gelephu CRRH	Medical Ward	Not Reported		2025	52	Punakha Hospital	Not Reported	
2025	52	Gelephu CRRH	Pediatric Ward	1	18	2025	52	Samdrup Jongkhar Hospital	2	852
2025	52	JDWNRH	Neonatal Ward	0	22	2025	52	Samtse Hospital	Not Reported	
2025	52	JDWNRH	Neonatal ICU	Not Reported		2025	52	Trashigang Hospital	29	979
2025	52	JDWNRH	Pediatric Ward	9	30	2025	52	Trongsa Hospital	0	550
2025	52	JDWNRH	Medical Extension Ward	Not Reported		2025	52	Tsirang Hospital	3	1205
2025	52	JDWNRH	Pediatric ICU	Not Reported				Total	114	6103
2025	52	JDWNRH	Cabin	Not Reported						
2025	52	JDWNRH	Medical Ward	Not Reported						
2025	52	JDWNRH	ICU	Not Reported						
2025	52	Monggar ERRH	ICU	Not Reported						
2025	52	Monggar ERRH	Neonatal ICU	Not Reported						
2025	52	Monggar ERRH	Pediatric Ward	Not Reported						
2025	52	Monggar ERRH	Medical Ward	Not Reported						
2025	52	Paro Hospital	General Ward	Not Reported						
2025	52	Phuntsholing Hospital	Medical Ward	3	18					
2025	52	Punakha Hospital	General Ward	0	10					
2025	52	Samdrup Jongkhar Hospital	General Ward	0	12					
2025	52	Samtse Hospital	General Ward	1	40					
2025	52	Trashigang Hospital	General Ward	3	24					
2025	52	Trongsa Hospital	General Ward	0	10					
2025	52	Tsirang Hospital	General Ward	1	13					
		Total		18	197					

*ILI- Influenza-Like Illness, SARI- Severe Acute Respiratory Infection, eSARI- extended Severe Acute Respiratory Infection